

Product datasheet for RC216323

Supervillin (SVIL) (NM_003174) Human Tagged ORF Clone

Product data:

Product Type:	Expression Plasmids
Product Name:	Supervillin (SVIL) (NM_003174) Human Tagged ORF Clone
Tag:	Myc-DDK
Symbol:	Supervillin
Synonyms:	MFM10
Mammalian Cell Selection:	Neomycin
Vector:	pCMV6-Entry (PS100001)
E. coli Selection:	Kanamycin (25 ug/mL)
ORF Nucleotide Sequence:	>RC216323 representing NM_003174 Red=Cloning site Blue=ORF Green=Tags(s)

TTTTGTAATACGACTCACTATAGGGCGGCCGGAATTCGTCGACTGGATCCGGTACCGAGGAGATCTGCC
GCC**CGATCGCC**

ATGAAAAGAAAAGAAAGAATTGCCAGGCGCCTGGAAGGGATTGAAAATGACACTCAGCCCATCCTTTGC
AGAGCTGCACAGGATTGGTGACTCACCGCTGCTGGAGGAAGACACCCCTCGATACATGAGAGCCAGCGA
CCCTGCCAGCCCCACATCGGCCGATCAAATGAAGAGGAGGAACTTCTGATTCTTCTCTAGAAAAGCAA
ACTCGATCCAAATACTGCACAGAAACCTCCGGTGTCCACGGTGACTCACCTATGGTTCCGGTACCATGG
ACACCCACAGTCTGGAGTCCAAAGCCGAAAGAATTGCAAGGTACAAAGCAGAAAGAAGGCGACAGCTGGC
AGAGAAGTATGGGCTGACTCTGGATCCCGAGGCGGACTCCGAGTATTTATCCCGCTATACCAAGTCCAGG
AAGGAGCCTGATGCTGTCGAGAAGCGGGGAGGAAAAAGTGACAAACAGGAAGAGTCAAGCAGAGATGCTA
GTTCTCTGTACCCCGGGACCGAGACGATGGGGCTCAGGACCTGTGCCGGTGAATCCAAGGACTATGCCCT
CCATGTGGGTGACGGCTCTTCCGACCCGGAGGTGCTGCTGAACATAGAAAACCAAGACGAGGTCAAGAG
CTGAGTGCCACCCGGCAGGCCATGACCTGTCCCAGCAGCCGAGAGTTCTCGACCTTCTTTTCTCTG
GGCGAGACTCCTCCTTCACTGAAGTGCCACGGTCCCCAAGCAGCCACAGCTCCTCCCTGCAGCAGGC
AGCCTCCCGAGCCCCCTCTTTGGTGACCCACAGCTATCCCTGAGGCCCGACCCAGGTGCACTTACAT
TCAGAAACGCCAACTGTGATGATGAAGAAAAGGTGGATGAACGAGCCAAGCTGAGCGTCGCCGCCAAGA
GGTTGCTTTTCAGGGAGATGAAAAATCTTTTGATGAACAAAATGTTCCAAAGCGACGCTCAAGAAACAC
AGCTGTGGAGCAGAGGCTACGCCGTCTGCAGGACAGGTCCCTCACCCAGCCCATCACCACTGAAGAGGTG
GTCATCGCAGCCACATTGCAGGCCTCTGCTCACAAAAGGCCTTAGCCAAGGACCAGACAAATGAGGGCA
AAGAGCTTGTGAGCAAGGAGAACCTGATTCTCCACTCTAAGCTTGGCCGAAAAGTTGGCCTTGTTTAA
CAAATTGTCCCAGCCAGTCTCAAAGCGATTTCTACCCGGAACAGAATAGACACGAGACAGAGGAGAATG
AACGCTCGCTATCAAACCTCAGCCAGTCACTGGGAGAGGTGGAGCAGGTGCAGAGTGGAAAGCTCATT
CTTTCTCACCTGCCGTGAACACATCAGTGTCTACCGTAGCATCCACGGTGTCTCCAATGTATGCCGAGA
TCTTCGACAAAAGCCACCTTTGACCACAATGCAAGTGCCACTGACTATAAGTTTTCTTCTCAATAGAA



[View online »](#)

AATTCGGACTCTCCAGTTAGAAGCATTCTGAAATCGCAAGCTTGGCAGCCTTTGGTAGAGGGTAGCGAGA
 ACAAGGGAATGTTGAGAGAATATGGAGAGACAGAAAGCAAGAGAGCTTTGACAGGTGAGACAGTGGGAT
 GGAGAAGTATGGGTCTTTGAGGAAGCAGAAGCATCTACCCCATCTGAACCGAGCCAGGGAAGGAGAC
 AGCCATAAGGAATCTAAATATGCTGTTCCAGAAAGAGGAAGCCTGGAACGGGCGAACCTCCCATCACCC
 ACCTCGGGGATGAACCGAAGGAATTTCCATGGCTAAAATGAATGCACAAGGAACTTGGACTTGAGGGA
 CAGGCTGCCCTTTGAAGAGAAGGTGGAGGTGGAGAATGTTATGAAAAGGAAGTTTTCACTAAGACGGCA
 GAGTTCGGGGAGCCCACTCCGAGCAGACGGGGACAGCTGCTGGGAAAACATTGGTCAAACCCACAGCCC
 CCGTGTCCCTGGAAGCCCCAGGATTCCTCGGAACAGCCACAGGAGAAGCTTGCAAGAATCCATGTGCGAT
 GTTTGCTGCTGGAGAGATCAAAACGCCGACAGGGGAGGGCCTTCTTACTCACCCAGCAAAACCATGTCT
 ATTAAGAAAAGATTGGCACTGTTGAAGAAAAGCGGGGAGGAAGATTGGAGAAACAGACTCAGCAGGAGGC
 AGGAGGGCGCAAGGCGCCGCCAGCAGCTGCACACCCAGGAAGCAGGGCGGTCCCTCATCAAGAAGCG
 GGTACAGAAAAGTCGAGAGAGCCAAATGACGATTGAGGAGAGGAAGCAGCTCATCACTGTGAGAGAGGAG
 GCCTGGAAGACGAGAGGCAGAGGAGCGGCCAACGACTCGACCCAGTTCCTGTGGCTGCCAGGATGGTGA
 AGAAAGGTTTGGCGTCACTACTGCCATAACCCAGTAGCCTCAGCCATTTGCGGTAACAACAGAGGCAC
 CACACCCGTTTCAAACCCCTGGAAGATATCGAAGCCAGACCAGATATGCAGTTAGAATCGGACCTGAAG
 CTGGACAGGCTGGAACCTTTCTAAGAAGGCTGAATAACAAAGTTGGCGGGATGCACGAAACGGTGTCTCA
 CTGTCAACCGCAATCTGTGAAGGAGGTGATGAAGCCAGATGATGATGAACCTTTGCCAAATTTTACCG
 CAGCGTGGATTATAATATGCCAAGAAGTCTGTGGAGATGGATGAGGACTTCGATGTCAATTTTCGATCCT
 TATGCACCCAAATGACGTCTTCCGTGGCCGAGCACAAGCGGGCAGTTAGGCCAAAGCGCCGGTTCAGG
 CCTCAAAAACCCCTGAAAATGCTGGCGGCAAGAGAAGATCTCCTTCAAGGAATACACTGAGCAGAGATT
 AAACGTTGCCCTCATGGAGTCAAAGCGGATGAAAGTAGAAAAGATGTCTTCAACTCAACTTCTCAGAA
 GTCACCCCTGGCGGGTTTAGCCAGTAAAGAAAACCTCAGCAACGTGAGCCTGCGGAGCGTCAACCTGACGG
 AACAGAACTTAACAACAGCGCCGTGCCCTACAAGAGGCTGATGCTGTTGCAGATTAAGGAAGAGACACA
 TGTGCAGACCAGGCTGGTGAACCTCGAGCTTCGGCGCTCAACAGTGGGGACTGCTTCTCTGCTCTCT
 CCCCCTGCTGCTTCTGTGGGTAGGAGAGTTTGCAAACGTCATAGAAAAGGCGAAGGCCTCAGAACTTG
 CAACTTAATTCAGACAAAGAGGGAACCTGGTTGTAGAGCTACTTATATCCAAACCATGAAGAAGGAAT
 TAATACACACTCATGCAGCCAAAGACTTCTGGAAGCTTCTGGGTGGCCAAACAGTTACCAATCTGCT
 GGAGACCCAAAAGAGATGAACTCTATGAAGCAGCCATAATAGAACTAACTGCATTTACCGTCTCATGG
 ATGACAACTTGTCTGATGACGACTACTGGGGAAAATTCGAAGTGTCCCTCTGCAACCCAAAGA
 GGTACTGGTGTGATTTTGGTAGTGAAGTTTACGTATGGCATGGGAAAGAAGTACATTAGCACAAAGA
 AAAATAGCATTTAGCTGGCAAAGCACTTATGGAATGGAACCTTTGACTATGAGAACTGTGACATCAATC
 CCTGGATCCTGGAGAATGCAATCCGCTTATCCCAAGAAAAGGACAGGGGCGGCCGACTGGGCGATATT
 TGGGAGACTTACTGAACCAATGAGACGATTTTGTTCAAAGAGAAGTTTCTGGATTGGACGGAATGAAG
 AGATCGAATGAGAAGAACCCCGGGGAACCTGCCAGCACAAGGAAGACCCAGGACTGATGTCAAGGCAT
 ACGATGTGACACGGATGGTGTCCATGCCCCAGACGACAGCAGGCACCATCCTGGACGGAGTGAACGTGCG
 CCGTGGCTATGGCCTGGTGAAGGACACGACAGGAGGCAGTTTGGATCACACAGCCTTCCGTGGATGTC
 TGGCACATCCTGGAATTCGACTATAGCAGGCTCCCAACAAAGCATCGGCAGTTCATGAGGGGGATG
 CCTATGTGGTCAAGTGAAGTTTCACTGGTGGTGGTGGTGGTGGTGGTGGTGGTGGTGGTGGTGGTGGT
 GAGGGCAGCCGGCAAAGAGAAGTGGTCTACTTCTTGGCAAGGCCGCACTCCACCTGAGTGAAGAAG
 GGCACGTGCGCGCTGATGACGGTGGAGCTGGACGAGGAAAGGGGGCCAGGTCCAGTTCTCAGGGAA
 AGGAGCCCCCTGTTTCTGCAAGTGTTCAGGGGGGATGGTGGTGCCTCGGGGAGGCGGGAAGAGGA
 AGAAGAAAATGTGCAAGTGAGTGGCGGTGACTGCGTGGTGGAGAGGTGCCGTGGAAGGGAATTTG
 CTGGAAGTGGCCTGTCACTGTAGCAGCCTGAGGTCCAGAACTCCATGGTGGTGTAACTCAACAAGG
 CCCTCATCTACCTGTGGCAGGATGCAAAGCCAGGCCACACGAAGGAGGTGGAAGGACCGCTGCGAA
 CAAGATCAAGGAACAATGCCCCGGAAGCAGGACTGCATAGTAGCAGCAAAGTCAACAACACGAGTGT
 GATGAAGGCTCCGAGCCACTCGGATTCGGGATGCCTTAGGAAGGAGAGACAGGAAAGCCTACGATTGCA
 TGCTTCAAGATCCTGGAAGTTTTAACTTCGCGCCCGCCTGTTTATCCTCAGCAGCTCCTCTGGGATTT
 TGCAGCCACAGAGTTTGTGTACCCTGCCGAGCCCTCTGTGGTCAAGTCCATGCCTTCTGCAAGAA
 GATCTGTACAGCGCGCCAGCCAGCACTTTTCTTGTGACAATCACACGAGGTGTACCTCTGGCAAG
 GCTGGTGGCCATCGAGAACAAGATCACTGGTTCGCGCCGCATCCGCTGGGCTCCGACCGGAAGAGCGC
 GATGGAGACTGTGCTCCAGTACTGCAAAGAAAAAATCTCAAGAAACAGCCCCAAGTCTTACCTTATC
 CACGCTGGTCTGGAGCCCTGACATTACCAATATGTTTCCAGCTGGGAGCACAGAGAGGACATCGCTG

AGATCACAGAGATGGACACGGAAGTTTCCAATCAGATCACCTCGTGAAGACGTCTTAGCCAAGCTCTG
TAAACCATTTACCCGCTGGCCGACCTCTGGCCAGGCCACTCCCAGAGGGGGTTCGATCCTCTGAAGCTT
GAGATCTATCTCACCGACGAAGACTTCGAGTTTGCCTAGACATGACGAGGGATGAATACAACGCCCTGC
CCGCTGGAAGCAGGTGAACCTGAAGAAAGCAAAAGGCCTGTTC

ACGCGTACGCGGGCCGCTCGAGCAGAACTCATCTCAGAAGAGGATCTGGCAGCAAATGATATCCTGGATT
ACAAGGATGACGACGATAAGGTTTAA

Protein Sequence:

>RC216323 representing NM_003174
Red=Cloning site Green=Tags(s)

MKRKERIARRLEGIENDTQPILLQSCTGLVTHRLLEEDTPRYMRASDPASPHIGRSNEEEETSDDSLEKQ
TRSKYCTETSGVHGDSPYSGTMDTHSLESKAERIARYKAERRRQLAEKYGLTLDPEADSEYLTRYTKSR
KEPDAVEKRGKSDKQEESRDASSLYPGTETMGLRTCAGESKDYALHVGDGSSDPEVLLNIENQRRGQE
LSATRQAHDLSPAAESSSTFSFSGRDSSFTEVPRSPKHAHSSSLQQAASRSPSFGDPQLSPEARPRCTSH
SETPTVDDEEKVDERAKLSVAARKLLFREMEKSFDEQNVPKRRSRNTAVEQRLRRLQDRSLTQPIITTEEV
VIAATLQASAHQKALAKDQTNEGKELAEQGEPSSTLSLAEKLALFNKLSQPVSKAISTRNRIDTRQRRM
NARYQTQPVTLGEVEVQVQSGKLIPIFSPAVNTSVSTVASTVAPMYAGDLRTKPPLDHNASATDYKFSSSIE
NSDSPVRSILKSQAWQPLVEGSENKGMLEYGETESKRALTGRDSGMEKYGSFEEAEASYPIILNAREGD
SHKESKYAVPRRGLERANPPIIHLGDEPKFSMAKMNAQGNLDRDLPFEEKVEVENVMKRKFSLRRAA
EFGPTSEQTGTAAGKTI AQTTAPVSWKPQDSSEQPQEKLCNPKCAMFAAGEIKTPTGEGLLDSPSKTMS
IKERLALLKKSGEEDWRNRLSRRQEGGKAPASSLHTQEAGRSLIKKRVTESRESQMTIEERKQLITVREE
AWKTRGRGAANDSTQFTVAGRMVKKGLASPTAITPVASATICGKTRGTTTPVSKPLEDIEARPDMLQESDLK
LDRLLETFLRRLNNKVGGMHETVLTVTGKSVKEVMKPDDETFAKFYRSVDYDYNMPSRSPVEMDEDFDIFDP
YAPKLTSSVAEHKRAVRPKRRVQASKNPLKMLAAREDLLEQYEQRLNVAFMESKRMKVEKMSSNSNFSE
VTLAGLASKENFSNVSLRSVNLTEQNSNNSAVPYKRLMLLQIKGRRHVQTRLVEPRASALNSGDCFLLS
PHCCFLWVGEFANVIEKAKASELATLIQTKRELGCRAIYIQTIEEGINTHTHAAKDFWKLGGQTSYQSA
GDPKEDEL YEAAI IETNCIYRLMDDKLV PDDDYWGKIPKCSLLQPKELVFDFGSEVYVWHGKEVTLAQR
KIAFQLAKHLWNGTFDYENCINPLDPGECNPLIPRKGQGRPDWAIFGRLTEHNETILFKEKFLDWTELK
RSNEKNPGEQAQHKEDPRTDVKAYDVTMVSMPQTTAGTILDGVNVGRGYGLVEGHDRRQFEITSVSDV
WHILEFDYSRLPKQSIGQFHEGDAYVVKWKFVSTAVGSRQKGEHSVRAAGKEKCVYFFWQGRHSTVSEK
GTSALMTVELDEERGAQVQVLQKPEPCFLQCFQGGMVVHSGRREEEEENVQSEWRLYCVRGEVPVEGNL
LEVACHCSSLRSRTSMVVLNVNKALIYLVHGGCKAQAHTKEVGRTAANKIKEQCPLAAGLHSSSKVTIHEC
DEGSEPLGFWDALGRRDRKAYDCMLQDPGSFNFAPRLFILSSSSGDAATEFVYPARAPSVVSSMPFLQE
DLYSAPQPALFLVDNHHEVYLWQGWPIENKITGSARIRWASDRKSAMETVLQYCKEKNLKKPAPKSYLI
HAGLEPLTFTNMFPSEWHREDIAEITEMDTEVSNQITLVEDVLAKLCKTIYPLADLLARPLPEGVDPLKL
EIYLTDEDFEFALDMTRDEYNALPAWKQVNLKKAKGLF

TRTRPLEQKLI SEEDLAANDILDYKDDDDKV

Chromatograms:

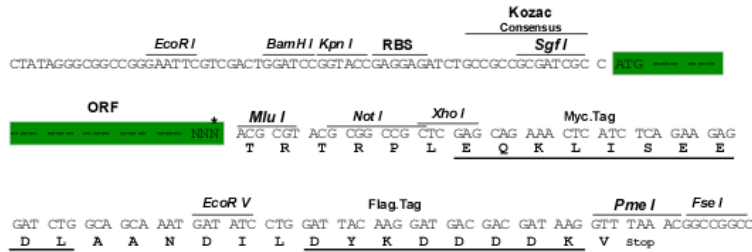
https://cdn.origene.com/chromatograms/mg4561_h11.zip

Restriction Sites:

Sgfl-Mlul

Cloning Scheme:

Cloning sites used for ORF Shutting:



* The last codon before the Stop codon of the ORF

- ACCN: NM_003174
- ORF Size: 5364 bp
- OTI Disclaimer: The molecular sequence of this clone aligns with the gene accession number as a point of reference only. However, individual transcript sequences of the same gene can differ through naturally occurring variations (e.g. polymorphisms), each with its own valid existence. This clone is substantially in agreement with the reference, but a complete review of all prevailing variants is recommended prior to use. [More info](#)
- OTI Annotation: This clone was engineered to express the complete ORF with an expression tag. Expression varies depending on the nature of the gene.
- Components: The ORF clone is ion-exchange column purified and shipped in a 2D barcoded Matrix tube containing 10ug of transfection-ready, dried plasmid DNA (reconstitute with 100 ul of water).

Reconstitution Method:

1. Centrifuge at 5,000xg for 5min.
2. Carefully open the tube and add 100ul of sterile water to dissolve the DNA.
3. Close the tube and incubate for 10 minutes at room temperature.
4. Briefly vortex the tube and then do a quick spin (less than 5000xg) to concentrate the liquid at the bottom.
5. Store the suspended plasmid at -20°C. The DNA is stable for at least one year from date of shipping when stored at -20°C.

RefSeq: [NM_003174.3](#)

RefSeq Size: 6719 bp

RefSeq ORF: 5367 bp

Locus ID: 6840

UniProt ID: [O95425](#)

Cytogenetics: 10p11.23

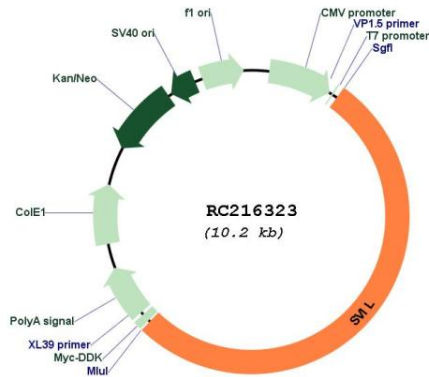
Domains: VHP, GEL, Gelsolin

Protein Families: Druggable Genome

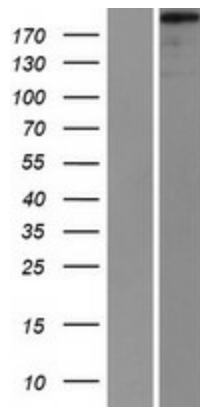
MW: 200.7 kDa

Gene Summary: This gene encodes a bipartite protein with distinct amino- and carboxy-terminal domains. The amino-terminus contains nuclear localization signals and the carboxy-terminus contains numerous consecutive sequences with extensive similarity to proteins in the gelsolin family of actin-binding proteins, which cap, nucleate, and/or sever actin filaments. The gene product is tightly associated with both actin filaments and plasma membranes, suggesting a role as a high-affinity link between the actin cytoskeleton and the membrane. The encoded protein appears to aid in both myosin II assembly during cell spreading and disassembly of focal adhesions. Several transcript variants encoding different isoforms of supervillin have been described. [provided by RefSeq, Apr 2016]

Product images:



Circular map for RC216323



Western blot validation of overexpression lysate (Cat# [LY418863]) using anti-DDK antibody (Cat# [TA50011-100]). Left: Cell lysates from untransfected HEK293T cells; Right: Cell lysates from HEK293T cells transfected with RC216323 using transfection reagent MegaTran 2.0 (Cat# [TT210002]).