

Product datasheet for **RC216317**

CCBL1 (KYAT1) (NM_004059) Human Tagged ORF Clone

Product data:

Product Type:	Expression Plasmids
Product Name:	CCBL1 (KYAT1) (NM_004059) Human Tagged ORF Clone
Tag:	Myc-DDK
Symbol:	CCBL1
Synonyms:	CCBL1; GTK; KAT1; KATI
Mammalian Cell Selection:	Neomycin
Vector:	pCMV6-Entry (PS100001)
E. coli Selection:	Kanamycin (25 ug/mL)



[View online »](#)

ORF Nucleotide Sequence:

>RC216317 representing NM_004059
 Red=Cloning site Blue=ORF Green=Tags(s)

TTTTGTAATACGACTCACTATAGGGCGGCCGGAATTCGTCGACTGGATCCGGTACCGAGGAGATCTGCC
 GCC**CGATCGCC**

ATGGCCAAACAGCTGCAGGCCCGAAGGCTAGACGGGATCGACTACAACCCCTGGGTGGAGTTTGTGAAAC
 TGGCCAGTGAGCATGACGTCGTGAACCTGGGCCAGGGCTTCCCGATTTCCACCACCAGACTTTGCCGT
 GGAAGCCTTTCAGCACGCTGTCAGTGGAGACTTATGCTTAACCAGTACACCAAGACATTTGGTTACCCA
 CCACTGACGAAGATCCTGGCAAGTTTCTTTGGGAGCTGCTGGGTGAGGATAGACCCGCTCAGGAATG
 TGCTGGTACTGTTGGTGGCTATGGGGCCCTGTTACAGCCTTCCAGGCCCTGGTGGACGAAGGAGACGA
 GGTATCATCATCGAACCTTTTTGACTGCTACGAGCCCATGACAATGATGGCAGGGGGTCTCTCTGTG
 TTTGTGTCCTGAAGCCGGTCCATCCAGAATGGAGAACTGGGTCCAGCAGCAACTGGCAGCTGGACC
 CCATGGAGCTGGCCGCAAAATTCATCACGCACCAAGCCCTGGTCTCAACACCCCAACAACCCCT
 GGGCAAGTGTTCTCAGGGAAGAGCTGGAGCTGGTGGCCAGCCTTGGCCAGCAGTATGAGTGGTGTG
 ATCACTGATGAAGTCTACCAAGTGGATGGTCTACGACGGGACCAGCACATCAGCATTGCCAGCCTCCCTG
 GCATGTGGGAACGGACCCTGACCATCGGCAGCGCCGGAAGACCTTCAGCGCCACTGGCTGGAAGGTGGG
 CTGGGTCTGGGTCCAGATCACATCATGAAGCACTGCGGACCCTGCACCAGAACTCCGTCTTCCACTGC
 CCCACGCAGAGCCAGGCTGCAAGTACAGCCGAGAGCTTTGAACGGGAGCAGCTGCTCTCCGCCAACCCAGCA
 GCTACTTTGTGCAGTCCCGCAGGCCATGCAGCGCTGCCGTGACCACATGATACGTAGCCTACAGTCAGT
 GGGCCTGAAGCCCATCATCCCTCAGGGCAGCTACTTCTCATCACAGACATCTCAGACTTCAAGAGGAAG
 ATGCCTGACTTGCTGGAGCTGTGGATGAGCCCTATGACAGACGCTTCGTCAGTGGATGATCAAGAACA
 AGGGCTTGGTGGCCATCCCTGTCTCCATCTTCTATAGTGTCCACATCAGAAGCACTTTGACCACTATAT
 CCGCTTCTGTTTTGTGAAGGATGAAGCCACGCTCCAGGCCATGGACGAGAAGCTGCGGAAGTGAAGGTG
 GAACTC

ACGCGTACGCGGCCGCTCGAGCAGAACTCATCTCAGAAGAGGATCTGGCAGCAATGATATCCTGGATT
 ACAAGGATGACGACGATAAGGTTTAA

Protein Sequence:

>RC216317 representing NM_004059
 Red=Cloning site Green=Tags(s)

MAKQLQARRLDGIDYNPWVEFVKLASEHDVVNLGQGFDPDFPPDFAVEAFQHAVSGDFMLNQYTKTFGYP
 PLTKILASFFGELLGQEIDPLRNVLVTGGYGALFTAFQALVDEGDEVIIIEPFFDCYEPMTMMAGGRP
 FVSLKPGPIQNGELGSSSNWQLDPMELAGKFTSRTKALVLNTPNPLGKVF SREELELVASLCQQHDVVC
 ITDEVYQWMVYDGHQHISIASLPGMWERTLTIGSAGKTF SATGWKVGWVLGPDHIMKHLRTVHQNSVFHC
 PTQSQA AVAESFEREQLLFRQPSSYFVQFPQAMQRCDHMIRSLQSVGLKPIIPQGSYFLITDISDFKRR
 MPDLPGAVDEPYDRRFVKWMIKKNKGLVAIPVSI FYSVPHQKHFHDYIRFCVKDEATLQAMDEKLRKWKV
 EL

TRTRPLEQKLISEEDLAANDILDYKDDDDKV

Chromatograms:

https://cdn.origene.com/chromatograms/mk6049_h11.zip

Restriction Sites:

SgfI-MluI

Cloning Scheme:


ACCN: NM_004059

ORF Size: 1266 bp

OTI Disclaimer: The molecular sequence of this clone aligns with the gene accession number as a point of reference only. However, individual transcript sequences of the same gene can differ through naturally occurring variations (e.g. polymorphisms), each with its own valid existence. This clone is substantially in agreement with the reference, but a complete review of all prevailing variants is recommended prior to use. [More info](#)

OTI Annotation: This clone was engineered to express the complete ORF with an expression tag. Expression varies depending on the nature of the gene.

Components: The ORF clone is ion-exchange column purified and shipped in a 2D barcoded Matrix tube containing 10ug of transfection-ready, dried plasmid DNA (reconstitute with 100 ul of water).

Reconstitution Method:

1. Centrifuge at 5,000xg for 5min.
2. Carefully open the tube and add 100ul of sterile water to dissolve the DNA.
3. Close the tube and incubate for 10 minutes at room temperature.
4. Briefly vortex the tube and then do a quick spin (less than 5000xg) to concentrate the liquid at the bottom.
5. Store the suspended plasmid at -20°C. The DNA is stable for at least one year from date of shipping when stored at -20°C.

RefSeq: [NM_004059.5](#)

RefSeq Size: 1925 bp

RefSeq ORF: 1269 bp

Locus ID: 883

UniProt ID: [Q16773](#)

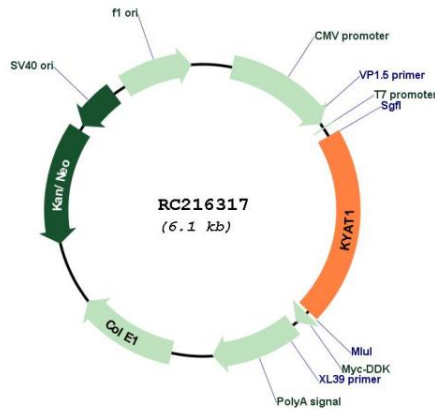
Cytogenetics: 9q34.11

Domains: aminotran_1_2

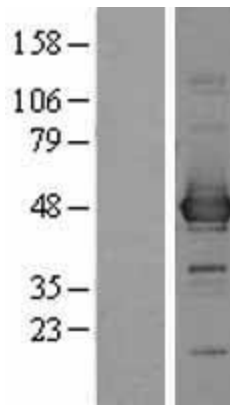
MW: 47.7 kDa

Gene Summary: This gene encodes a cytosolic enzyme that is responsible for the metabolism of cysteine conjugates of certain halogenated alkenes and alkanes. This metabolism can form reactive metabolites leading to nephrotoxicity and neurotoxicity. Increased levels of this enzyme have been linked to schizophrenia. Multiple transcript variants that encode different isoforms have been identified for this gene. [provided by RefSeq, Jul 2008]

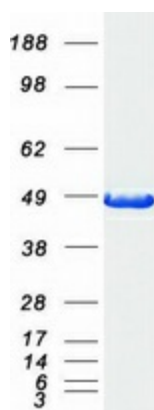
Product images:



Circular map for RC216317



Western blot validation of overexpression lysate (Cat# [LY426545]) using anti-DDK antibody (Cat# [TA50011-100]). Left: Cell lysates from untransfected HEK293T cells; Right: Cell lysates from HEK293T cells transfected with [RC225677] using transfection reagent MegaTran 2.0 (Cat# [TT210002]).



Coomassie blue staining of purified KYAT1 protein (Cat# [TP316317]). The protein was produced from HEK293T cells transfected with KYAT1 cDNA clone (Cat# RC216317) using MegaTran 2.0 (Cat# [TT210002]).