

## Product datasheet for RC216316

### FUT7 (NM\_004479) Human Tagged ORF Clone

#### Product data:

Product Type:	Expression Plasmids
Product Name:	FUT7 (NM_004479) Human Tagged ORF Clone
Tag:	Myc-DDK
Symbol:	FUT7
Synonyms:	FucT-VII
Mammalian Cell Selection:	Neomycin
Vector:	pCMV6-Entry (PS100001)
E. coli Selection:	Kanamycin (25 ug/mL)
ORF Nucleotide Sequence:	>RC216316 representing NM_004479 Red=Cloning site Blue=ORF Green=Tags(s)

TTTTGTAATACGACTCACTATAGGGCGGCCGGAATTCGTCGACTGGATCCGGTACCGAGGAGATCTGCC  
GCC**CGATCGCC**

ATGAATAATGCTGGGCACGGCCCCACCCGGAGGCTGCGAGGCTTGGGGTCTGGCCGGGGTGGCTCTGC  
TCGCTGCCCTCTGGCTCCTGTGGCTGCTGGGTGAGCCCTCGGGGTACCCCGGCACCCAGCCACGAT  
CACCATCCTTGTCTGGCACTGGCCCTTCACTGACCAGCCCCAGAGCTGCCAGCGACACCTGCACCCGC  
TACGGCATCGCCGCTGCCACCTGAGTGCCAACCGAAGCCTGCTGGCCAGCGCCGACGCCGTGGTCTTCC  
ACCACCGGAGCTGCAGACCCGGCGGTCCACCTGCCCTGGCCAGCGCCGCGAGGGCAGCCCTGGGT  
GTGGGCCCTCCATGGAGTCTCCTAGCCACACCCAGGCCTCAGCCACCTCCGAGGCATCTTCAACTGGGTG  
CTGAGCTACCGGCGGACTCGGACATCTTTGTGCCCTATGGCCGCTGGAGCCCCACTGGGGCCCTCGC  
CACCGCTGCCAGCCAAGAGCAGGGTGGCCGCTGGGTGGTCACTTCCAGGAGCGGCAGCTGCGTGC  
CAGGCTGTACCGGAGCTGGCGCCTCATCTGCGGGTGGATGTCTTTGGCCGTGCCAATGGACGGCCACTG  
TGCGCCAGCTGCCTGGTGGCCACCGTGGCCAGTACCGCTTCTACCTGTCTTTGAGAACTCTCAGCACC  
GCGACTACATTACGGAGAAATCTGGCGCAACGCACTGGTGGCTGGCACTGTGCCAGTGGTGTGGGGCC  
CCCACGGGCCACCTATGAGGCCCTTGTGCCGGCTGACGCCCTTGTGCATGTGGATGACTTTGGCTCAGCC  
CGAGAGCTGGCGGCTTTCTCACTGGCATGAATGAGAGCCGATACCAACGCTTCTTTGCCCTGGCGTGACA  
GGCTCCGCGTGGCACTGTTACCGACTGGCGGGAACGTTTCTGTGCCATCTGTGACCGCTACCCACACCT  
ACCCCGCAGCCAAGTCTATGAGGACCTTGAGGGTTGGTTTCAGGCC

**ACGCGT**ACGCGGCCGCTCGAGCAGAAACTCATCTCAGAAGAGGATCTGGCAGCAAATGATATCCTGGATT  
ACAAGGATGACGACGATAAGGTTTAA



[View online »](#)

**Protein Sequence:** >RC216316 representing NM\_004479  
Red=Cloning site Green=Tags(s)

MNNAGHGPTRRRLRGLGVLAVALLAALWLLWLLGSAPRGTPAPQPTITILVWHWPFTDQPELPSDTCTR  
 YGIARCHLSANRSLASADAVVHHRELQTRRSHLPLAQRPRGQPWWASMESPSHTHGLSHLRGIFNWV  
 LSYRRDSDIFVPYGRLEPHWGPSPLPAKSRVAWVVSNFQERQLRARLYRQLAPHLRVDVFGGRANGRPL  
 CASCLVPTVAQYRFYLSFENSQHRDYITEKFWRNALVAGTVPVVLGPPRATYEAFVPADAFVHVDFFGSA  
 RELAAFLTGMNESRYQRFFAWRDRLRVRLFQDWRERFCAICDRYPHLPRSQVYEDLEGWFQA

TRTRPLEQKLISEEDLAANDILDYKDDDDKV

**Chromatograms:** [https://cdn.origene.com/chromatograms/mk6123\\_c10.zip](https://cdn.origene.com/chromatograms/mk6123_c10.zip)

**Restriction Sites:** SgfI-MluI

**Cloning Scheme:**

Cloning sites used for ORF Shutting:



\* The last codon before the Stop codon of the ORF

**ACCN:** NM\_004479

**ORF Size:** 1026 bp

**OTI Disclaimer:** The molecular sequence of this clone aligns with the gene accession number as a point of reference only. However, individual transcript sequences of the same gene can differ through naturally occurring variations (e.g. polymorphisms), each with its own valid existence. This clone is substantially in agreement with the reference, but a complete review of all prevailing variants is recommended prior to use. [More info](#)

**OTI Annotation:** This clone was engineered to express the complete ORF with an expression tag. Expression varies depending on the nature of the gene.

**Components:** The ORF clone is ion-exchange column purified and shipped in a 2D barcoded Matrix tube containing 10ug of transfection-ready, dried plasmid DNA (reconstitute with 100 ul of water).

**Reconstitution Method:**

1. Centrifuge at 5,000xg for 5min.
2. Carefully open the tube and add 100ul of sterile water to dissolve the DNA.
3. Close the tube and incubate for 10 minutes at room temperature.
4. Briefly vortex the tube and then do a quick spin (less than 5000xg) to concentrate the liquid at the bottom.
5. Store the suspended plasmid at -20°C. The DNA is stable for at least one year from date of shipping when stored at -20°C.

**RefSeq:** [NM\\_004479.4](#)

**RefSeq Size:** 2598 bp

**RefSeq ORF:** 1029 bp

**Locus ID:** 2529

**UniProt ID:** [Q11130](#)

**Cytogenetics:** 9q34.3

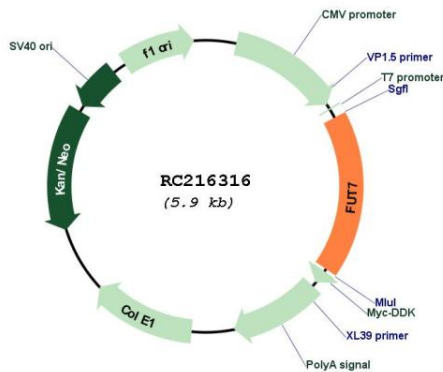
**Protein Families:** Transmembrane

**Protein Pathways:** Glycosphingolipid biosynthesis - lacto and neolacto series

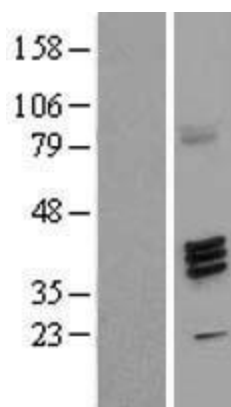
**MW:** 39.1 kDa

**Gene Summary:** The protein encoded by this gene is a Golgi stack membrane protein that is involved in the creation of sialyl-Lewis X antigens. The encoded protein can direct the synthesis of the E-selectin-binding sialyl-Lewis X moiety. [provided by RefSeq, Jul 2008]

### Product images:



Circular map for RC216316



Western blot validation of overexpression lysate (Cat# [LY401422]) using anti-DDK antibody (Cat# [TA50011-100]). Left: Cell lysates from untransfected HEK293T cells; Right: Cell lysates from HEK293T cells transfected with RC216316 using transfection reagent MegaTran 2.0 (Cat# [TT210002]).