

Product datasheet for RC216314

Eph receptor A6 (EPHA6) (NM_173655) Human Tagged ORF Clone

Product data:

Product Type:	Expression Plasmids
Product Name:	Eph receptor A6 (EPHA6) (NM_173655) Human Tagged ORF Clone
Tag:	Myc-DDK
Symbol:	Eph receptor A6
Synonyms:	EHK-2; EHK2; EK12; EPA6; HEK12; PRO57066
Mammalian Cell Selection:	Neomycin
Vector:	pCMV6-Entry (PS100001)
E. coli Selection:	Kanamycin (25 ug/mL)
ORF Nucleotide Sequence:	>RC216314 representing NM_173655 Red=Cloning site Blue=ORF Green=Tags(s)

TTTTGTAATACGACTCACTATAGGGCGGCCGGAATTCGTCGACTGGATCCGGTACCGAGGAGATCTGCC
GCC**CGATCGCC**

ATGAAAGACTCTCCATTTCAAGTGACAAAAGTACTGGCTTAATGAAAAGTGGGACTTTATTGCCTCAG
CTTCTGACATGGCAGCAGAACAAGGACAGATTCTCGTAGCCACCGCCGCTGTTGGCGGATTCACTCT
CCTCGTCATCCTCACTTTATTCTTCTTGATCACTGGGAGATGTCAGTGGTACATAAAAGCCAAGATGAAG
TCAGAAGAGAAGAGAAGAAACCCTTACAGAATGGCATTTCGCTTCCCGGAATTAACCTTACATTG
ATCCAGATACATATGAAGACCCATCCCTAGCAGTCCATGAATTTGCAAAGGAGATTGATCCCTCAAGAAT
TCGATTGAGAGAGTCATTGGGGCAGGTGAATTTGGAGAAGTCTGTAGTGGCGTTTGAAGACACCGGG
AAAAGAGAGATCCAGTTGCCATTAACCTTTGAAAGGTGGCCACATGGATCGGCAAGAAGAGATTTTC
TAAGAGAAGCTAGTATCATGGGCCAGTTTGACCATCCAACATCATTGCGCTAGAAGGGGTTGTCACCAA
AAGATCCTTCCCGGCCATTGGGGTGGAGGCGTTTTGCCCCAGCTTCTGAGGGCAGGGTTTTAAATAGC
ATCCAGGCCCCGCATCCAGTGCCAGGGGAGGATCTTTGCCCCAGGATTCTGCTGCCAGACCAGTAA
TGATTGTGGTGAATATATGGAGAATGGATCCCTAGACTCCTTTTTCGGAAGCATGATGGCCACTTAC
AGTCATCCAGTTGGTCGGAATGCTCCGAGGCATTGCATCAGGCATGAAGTATCTTTCTGATATGGGTTAT
GTTTCATCGAGACCTAGCGGCTCGGAATATACTGGTCAATAGCAACTTAGTATGCAAAGTTTCTGATTTTG
GTCTCTCCAGAGTCTGGAAGATGATCCAGAAGCTGCTTATACAACAACCTGACCTTTCCAAACTTAAC
ACTTAACCTCTGCTATTCTGCA

ACGCGTACGCGGCCGCTCGAGCAGAAAAGTCTCAGAAAGGATCTGGCAGCAAATGATATCCTGGATT
ACAAGGATGACGACGATAAGGTTTAA



[View online »](#)

Protein Sequence: >RC216314 representing NM_173655
Red=Cloning site Green=Tags(s)

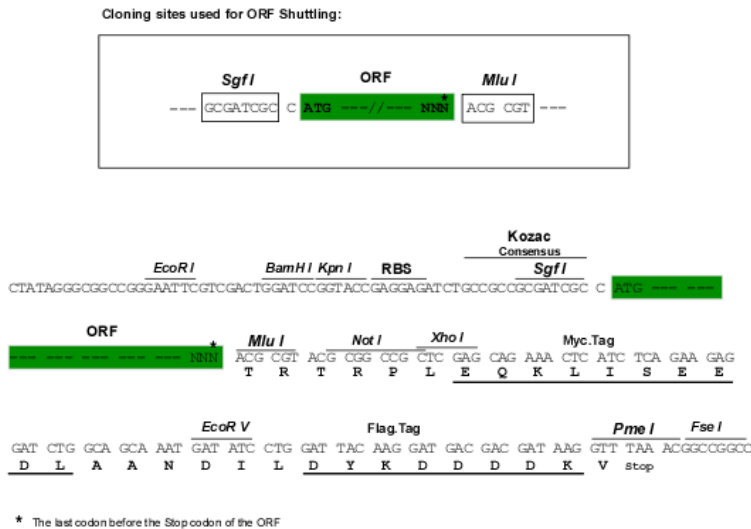
MKDSPFQVTKLYWLNEKWDFIASASDMAAEQGQILVIATAAVGGFTLLVILTLFFLITGRCQWYIKAKMK
 SEEKRRNHLQNGHLRFPGIKTYIDPDTYEDPSLAVHEFAKEIDPSRIRIERVIGAGEFGEVCSGRLKTPG
 KREIPVAIKTLKGGHMDRQRDFLREASIMGQFDHPNIIRLEGVTVKRSFPAIGVEAFPCPSFLRAGFLNS
 IQAPHPVPGGSLPPRIPAGRPVMI VVEYMENGLSDSFLRKHDGHFTVIQLVGMRLGIASGMKYLSDMGY
 VHRDLAARNILVNSNLVCKVSDFGLSRVLEDDPEAAAYTTDLFQTLTLNLCYSA

TRTRPLEQKLISEEDLAANDILDYKDDDDKV

Chromatograms: https://cdn.origene.com/chromatograms/mk8052_h09.zip

Restriction Sites: SgfI-MluI

Cloning Scheme:



ACCN: NM_173655

ORF Size: 1002 bp

OTI Disclaimer: The molecular sequence of this clone aligns with the gene accession number as a point of reference only. However, individual transcript sequences of the same gene can differ through naturally occurring variations (e.g. polymorphisms), each with its own valid existence. This clone is substantially in agreement with the reference, but a complete review of all prevailing variants is recommended prior to use. [More info](#)

OTI Annotation: This clone was engineered to express the complete ORF with an expression tag. Expression varies depending on the nature of the gene.

Components: The ORF clone is ion-exchange column purified and shipped in a 2D barcoded Matrix tube containing 10ug of transfection-ready, dried plasmid DNA (reconstitute with 100 ul of water).

Reconstitution Method:

1. Centrifuge at 5,000xg for 5min.
2. Carefully open the tube and add 100ul of sterile water to dissolve the DNA.
3. Close the tube and incubate for 10 minutes at room temperature.
4. Briefly vortex the tube and then do a quick spin (less than 5000xg) to concentrate the liquid at the bottom.
5. Store the suspended plasmid at -20°C. The DNA is stable for at least one year from date of shipping when stored at -20°C.

RefSeq: [NM_173655.4](#)

RefSeq Size: 1619 bp

RefSeq ORF: 1005 bp

Locus ID: 285220

UniProt ID: [Q9UF33](#)

Cytogenetics: 3q11.2

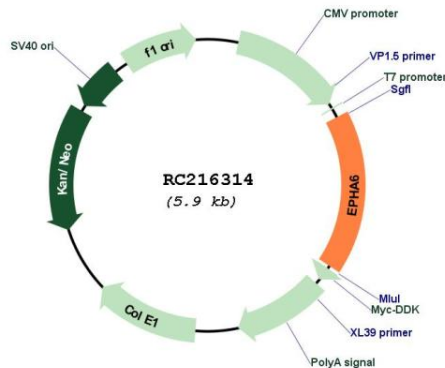
Protein Families: Druggable Genome, Protein Kinase, Transmembrane

Protein Pathways: Axon guidance

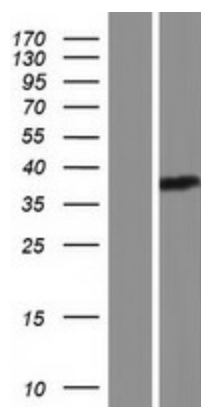
MW: 37.1 kDa

Gene Summary: Receptor tyrosine kinase which binds promiscuously GPI-anchored ephrin-A family ligands residing on adjacent cells, leading to contact-dependent bidirectional signaling into neighboring cells. The signaling pathway downstream of the receptor is referred to as forward signaling while the signaling pathway downstream of the ephrin ligand is referred to as reverse signaling (By similarity).[UniProtKB/Swiss-Prot Function]

Product images:



Circular map for RC216314



Western blot validation of overexpression lysate (Cat# [LY406538]) using anti-DDK antibody (Cat# [TA50011-100]). Left: Cell lysates from untransfected HEK293T cells; Right: Cell lysates from HEK293T cells transfected with RC216314 using transfection reagent MegaTran 2.0 (Cat# [TT210002]).