

Product datasheet for **RC216303**

RAB6B (NM_016577) Human Tagged ORF Clone

Product data:

Product Type:	Expression Plasmids
Product Name:	RAB6B (NM_016577) Human Tagged ORF Clone
Tag:	Myc-DDK
Symbol:	RAB6B
Mammalian Cell Selection:	Neomycin
Vector:	pCMV6-Entry (PS100001)
E. coli Selection:	Kanamycin (25 ug/mL)
ORF Nucleotide Sequence:	>RC216303 representing NM_016577 Red=Cloning site Blue=ORF Green=Tags(s)

TTTTGTAATACGACTCACTATAGGGCGGCCGGAATTCGTCGACTGGATCCGGTACCGAGGAGATCTGCC
GCC**CGGATCGCC**

ATGTCCGCAGGGGAGATTTTGGGAATCCACTGAGAAAATTCAAGTTGGTGTCTTGGGGGAGCAGAGCG
TCGGGAAGACGTCTCTGATTACGAGGTTTCATGTACGACAGCTTCGACAACACATACCAGGCAACCATTGG
GATTGACTTCTTGTCAAAAACCATGTACTTGGAGGACCGACGGTGCAGCTCTGGGACACAGCT
GGTCAGGAGAGGTTCCGCAGCTGATCCCCAGCTACATCCGGGACTCCACGGTGGCTGTGGTGGTGTACG
ACATCAAAATCTCAACTCCTTCCAACAGACCTCTAAGTGGATCGACGACGTGAGGACAGAGAGGGGCGAG
TGATGTTATCATCATGCTGGTGGGCAACAAGACGACCTGGCTGATAAGAGGCAGATAACCATCGAGGAG
GGGAGCAGCGCGCCAAAGAACTGAGCGTCATGTTTCATTGAGACCAAGTGCAGAACTGGCTACAACGTGA
AGCAGCTTTTTCGACGTGTGGCGTCTACCCGGAATGGAGAATGTCCAGGAGAAAAGCAAAGAAGG
GATGATTGACATCAAGCTGGACAAACCCAGGAGCCCCCGCCAGCGAGGGCGGCTGCTCCTGC

ACGCGTACGCGGCCGCTCGAGCAGAACTCATCTCAGAAGAGGATCTGGCAGCAAATGATATCCTGGATT
ACAAGGATGACGACGATAAGGTTTAA

Protein Sequence:	>RC216303 representing NM_016577 Red=Cloning site Green=Tags(s)
-------------------	--

MSAGGDFGNPLRKFKLVFLGEQSVGKTSITRFMYDSFDNTYQATIGIDFLSKTMYLEDRTVRLQLWDTA
GQERFRSLIPSYIRDSTVAVVVYDITNLNSFQQTSKWIDDVRTERGSDVIIMLVGNKTDLADKRQITIEE
GEQRAKELSVMFIECTSAKTGYNVKQLFRRVASALPGMENVQEKSEGMIDIKLDKPQEPASEGGCSC

TRTRPLEQKLISEEDLAANDILDYKDDDDKV

Chromatograms:	https://cdn.origene.com/chromatograms/mk6267_d06.zip
----------------	---



[View online »](#)

Restriction Sites: SgfI-MluI

Cloning Scheme:



ACCN: NM_016577

ORF Size: 624 bp

OTI Disclaimer: The molecular sequence of this clone aligns with the gene accession number as a point of reference only. However, individual transcript sequences of the same gene can differ through naturally occurring variations (e.g. polymorphisms), each with its own valid existence. This clone is substantially in agreement with the reference, but a complete review of all prevailing variants is recommended prior to use. [More info](#)

OTI Annotation: This clone was engineered to express the complete ORF with an expression tag. Expression varies depending on the nature of the gene.

Components: The ORF clone is ion-exchange column purified and shipped in a 2D barcoded Matrix tube containing 10ug of transfection-ready, dried plasmid DNA (reconstitute with 100 ul of water).

Reconstitution Method:

1. Centrifuge at 5,000xg for 5min.
2. Carefully open the tube and add 100ul of sterile water to dissolve the DNA.
3. Close the tube and incubate for 10 minutes at room temperature.
4. Briefly vortex the tube and then do a quick spin (less than 5000xg) to concentrate the liquid at the bottom.
5. Store the suspended plasmid at -20°C. The DNA is stable for at least one year from date of shipping when stored at -20°C.

Note: Plasmids are not sterile. For experiments where strict sterility is required, filtration with 0.22um filter is required.

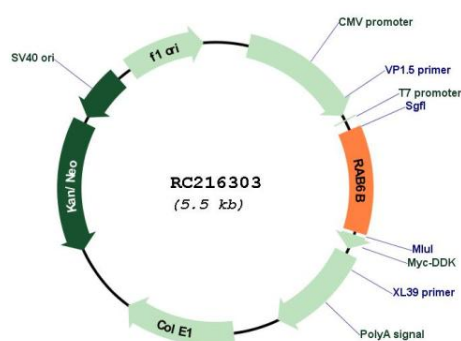
RefSeq: [NM_016577.4](#)

RefSeq Size: 5561 bp

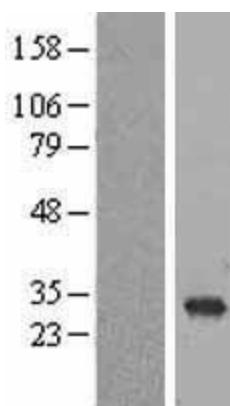
RefSeq ORF: 627 bp

Locus ID:	51560
UniProt ID:	Q9NRW1
Cytogenetics:	3q22.1
Domains:	ras, RAN, RAS, RHO, RAB
Protein Families:	Druggable Genome
MW:	23.3 kDa
Gene Summary:	Seems to have a role in retrograde membrane traffic at the level of the Golgi complex. May function in retrograde transport in neuronal cells.[UniProtKB/Swiss-Prot Function]

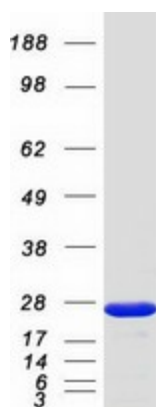
Product images:



Circular map for RC216303



Western blot validation of overexpression lysate (Cat# [LY413899]) using anti-DDK antibody (Cat# [TA50011-100]). Left: Cell lysates from untransfected HEK293T cells; Right: Cell lysates from HEK293T cells transfected with RC216303 using transfection reagent MegaTran 2.0 (Cat# [TT210002]).



Coomassie blue staining of purified RAB6B protein (Cat# [TP316303]). The protein was produced from HEK293T cells transfected with RAB6B cDNA clone (Cat# RC216303) using MegaTran 2.0 (Cat# [TT210002]).