

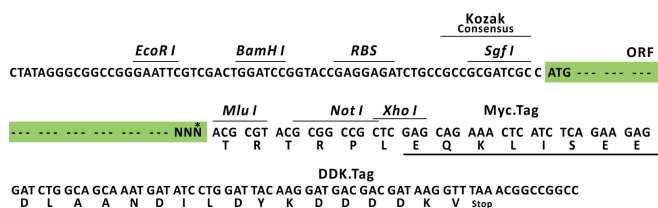
Product datasheet for RC216301L1

GALP (NM_033106) Human Tagged Lenti ORF Clone

Product data:

Product Type:	Expression Plasmids
Product Name:	GALP (NM_033106) Human Tagged Lenti ORF Clone
Tag:	Myc-DDK
Symbol:	GALP
Mammalian Cell Selection:	None
Vector:	pLenti-C-Myc-DDK (PS100064)
E. coli Selection:	Chloramphenicol (34 ug/mL)
ORF Nucleotide Sequence:	The ORF insert of this clone is exactly the same as(RC216301).
Restriction Sites:	SgfI-MluI
Cloning Scheme:	

Cloning sites used for ORF Shuttling:



* The last codon before the Stop codon of the ORF.

ACCN: NM_033106

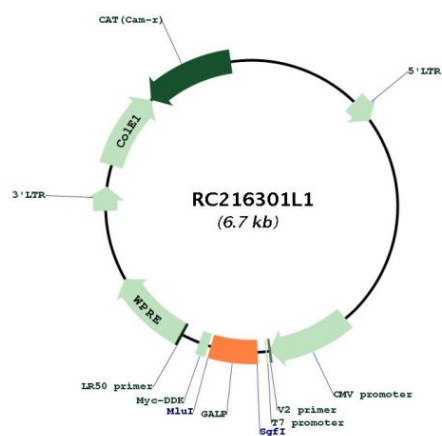
ORF Size: 348 bp



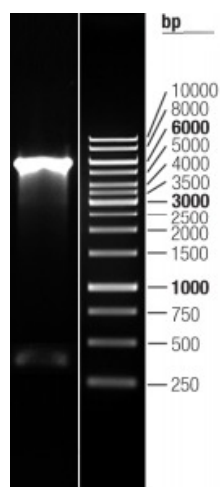
[View online »](#)

OTI Disclaimer:	The molecular sequence of this clone aligns with the gene accession number as a point of reference only. However, individual transcript sequences of the same gene can differ through naturally occurring variations (e.g. polymorphisms), each with its own valid existence. This clone is substantially in agreement with the reference, but a complete review of all prevailing variants is recommended prior to use. More info
OTI Annotation:	This clone was engineered to express the complete ORF with an expression tag. Expression varies depending on the nature of the gene.
Components:	The ORF clone is ion-exchange column purified and shipped in a 2D barcoded Matrix tube containing 10ug of transfection-ready, dried plasmid DNA (reconstitute with 100 ul of water).
Reconstitution Method:	<ol style="list-style-type: none"> 1. Centrifuge at 5,000xg for 5min. 2. Carefully open the tube and add 100ul of sterile water to dissolve the DNA. 3. Close the tube and incubate for 10 minutes at room temperature. 4. Briefly vortex the tube and then do a quick spin (less than 5000xg) to concentrate the liquid at the bottom. 5. Store the suspended plasmid at -20°C. The DNA is stable for at least one year from date of shipping when stored at -20°C.
RefSeq:	NM_033106.1
RefSeq Size:	947 bp
RefSeq ORF:	351 bp
Locus ID:	85569
UniProt ID:	Q9UBC7
Cytogenetics:	19q13.43
Protein Families:	Secreted Protein
MW:	12.4 kDa
Gene Summary:	This gene encodes a member of the galanin family of neuropeptides. The encoded protein binds galanin receptors 1, 2 and 3 with the highest affinity for galanin receptor 3 and has been implicated in biological processes involving the central nervous system including hypothalamic regulation of metabolism and reproduction. A peptide encoded by a splice variant of this gene, termed alarin, has vasoactive properties, displays antimicrobial activity against E. coli, and may serve as a marker for neuroblastic tumors.[provided by RefSeq, Nov 2014]

Product images:



Circular map for RC216301L1



Double digestion of RC216301L1 using SgfI and MluI