

## Product datasheet for **RC216301**

### **GALP (NM\_033106) Human Tagged ORF Clone**

#### Product data:

Product Type:	Expression Plasmids
Product Name:	GALP (NM_033106) Human Tagged ORF Clone
Tag:	Myc-DDK
Symbol:	GALP
Mammalian Cell Selection:	Neomycin
Vector:	pCMV6-Entry (PS100001)
E. coli Selection:	Kanamycin (25 ug/mL)
ORF Nucleotide Sequence:	<p>&gt;RC216301 representing NM_033106            Red=Cloning site Blue=ORF Green=Tags(s)</p> <p>TTTTGTAATACGACTCACTATAGGGCGGCCGGAATTCGTCGACTGGATCCGGTACCGAGGAGATCTGCCGCC<b>CGATCGCC</b></p> <p>ATGGCTCCTCCCTCCGTCCCCCTGGTCCTCCTCCTCGTCCTTTGCTGAGCCTGGCAGAGACTCCAGCATCCGCACCTGCCACCGGGGACGAGGAGGCTGGACCCTCAATAGTGCTGGCTACCTTCTGGGTCCCCTCCTCCACCTTCCCCAAATGGGTGACCAAGACGGAAGAGGGAGACAGCCCTTGAGATCCTAGACCTGTGGAAGGCCATCGACGGGCTCCCCTACTCCACCCCTCCACAGCCCTCAAGAGGAATGTGATGGAGACGTTTGCCAACCAGAGATTGGAGATCTGGGCATGCTCAGCATGAAAATCCCAAGGAGGAAGATGTCCTGAAGTCA</p> <p><b>ACGCGT</b>ACGCGGCCGCTCGAGCAGAACTCATCTCAGAAGAGGATCTGGCAGCAAATGATATCCTGGATTACAAGGATGACGACGATAAGGTTTAA</p>
Protein Sequence:	<p>&gt;RC216301 representing NM_033106            Red=Cloning site Green=Tags(s)</p> <p>MAPPSVPLVLLLVLALLSLAETPASAPAHRRGGWTLNSAGYLLGPVLHLPQMGDQDGKRETALEILDWLKAIDGLPYSHPPQSKRNVMTFAKPEIGDLGMLSMKIPKEEDVLKS</p> <p><b>TR</b>TRPLE<b>EQKLISEEDLA</b>ANDILDYKDDDDKV</p>
Chromatograms:	<a href="https://cdn.origene.com/chromatograms/mk6123_d02.zip">https://cdn.origene.com/chromatograms/mk6123_d02.zip</a>
Restriction Sites:	SgfI-MluI


[View online »](#)

**Cloning Scheme:**


**ACCN:** NM\_033106

**ORF Size:** 348 bp

**OTI Disclaimer:** The molecular sequence of this clone aligns with the gene accession number as a point of reference only. However, individual transcript sequences of the same gene can differ through naturally occurring variations (e.g. polymorphisms), each with its own valid existence. This clone is substantially in agreement with the reference, but a complete review of all prevailing variants is recommended prior to use. [More info](#)

**OTI Annotation:** This clone was engineered to express the complete ORF with an expression tag. Expression varies depending on the nature of the gene.

**Components:** The ORF clone is ion-exchange column purified and shipped in a 2D barcoded Matrix tube containing 10ug of transfection-ready, dried plasmid DNA (reconstitute with 100 ul of water).

**Reconstitution Method:**

1. Centrifuge at 5,000xg for 5min.
2. Carefully open the tube and add 100ul of sterile water to dissolve the DNA.
3. Close the tube and incubate for 10 minutes at room temperature.
4. Briefly vortex the tube and then do a quick spin (less than 5000xg) to concentrate the liquid at the bottom.
5. Store the suspended plasmid at -20°C. The DNA is stable for at least one year from date of shipping when stored at -20°C.

**Note:** Plasmids are not sterile. For experiments where strict sterility is required, filtration with 0.22um filter is required.

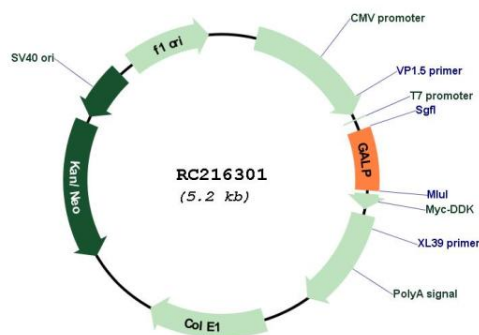
**RefSeq:** [NM\\_033106.4](#)

**RefSeq Size:** 947 bp

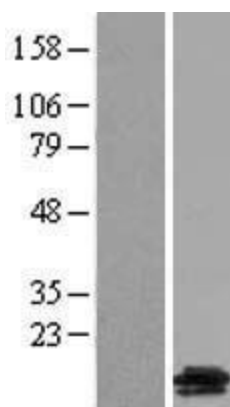
RefSeq ORF: 351 bp  
 Locus ID: 85569  
 UniProt ID: [Q9UBC7](#)  
 Cytogenetics: 19q13.43  
 Protein Families: Secreted Protein  
 MW: 12.4 kDa

**Gene Summary:** This gene encodes a member of the galanin family of neuropeptides. The encoded protein binds galanin receptors 1, 2 and 3 with the highest affinity for galanin receptor 3 and has been implicated in biological processes involving the central nervous system including hypothalamic regulation of metabolism and reproduction. A peptide encoded by a splice variant of this gene, termed alarin, has vasoactive properties, displays antimicrobial activity against *E. coli*, and may serve as a marker for neuroblastic tumors.[provided by RefSeq, Nov 2014]

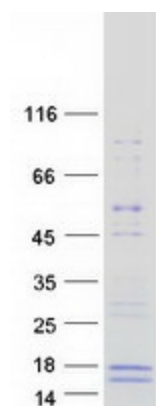
## Product images:



Circular map for RC216301



Western blot validation of overexpression lysate (Cat# [LY403225]) using anti-DDK antibody (Cat# [TA50011-100]). Left: Cell lysates from untransfected HEK293T cells; Right: Cell lysates from HEK293T cells transfected with RC216301 using transfection reagent MegaTran 2.0 (Cat# [TT210002]).



Coomassie blue staining of purified GALP protein (Cat# [TP316301]). The protein was produced from HEK293T cells transfected with GALP cDNA clone (Cat# RC216301) using MegaTran 2.0 (Cat# [TT210002]).