

Product datasheet for RC216297

LRRC20 (NM_018205) Human Tagged ORF Clone

Product data:

Product Type: Expression Plasmids
Product Name: LRRC20 (NM_018205) Human Tagged ORF Clone
Tag: Myc-DDK
Symbol: LRRC20
Mammalian Cell Selection: Neomycin
Vector: pCMV6-Entry (PS100001)
E. coli Selection: Kanamycin (25 ug/mL)
ORF Nucleotide Sequence: >RC216297 representing NM_018205
Red=Cloning site Blue=ORF Green=Tags(s)

TTTTGTAATACGACTCACTATAGGGCGGCCGGAATTCGTCGACTGGATCCGGTACCGAGGAGATCTGCC
GCC**CGATCGCC**

ATGCTGAAGAAGATGGGTGAGGCCGTGGCCAGAGTAGCAAGGAAGGTCAACGAGACGGTGGAGAGCGGCT
CTGACACTCTGGACCTGGCCGAGTGAAGCTGGTCTCCTTTCCATTGGCATCTACAAGTCTCGCGAA
TGTCTCTGGCCAGATCCACCTCATCACCCTGGCTAACACGAGCTTAAGTCCCTCACCAGCAAGTTCATG
ACCACATTCAGTCAGCTCCGAGATGTGCCGTGGAGAAGCTGGCCGCCATGCCAGCCTTGCGCAGCATCA
ACCTCCGCTTCAACCCACTCAACGCCGAGGTGCCGTGATCGCCCCGCCGCTCATCAAGTTTGACATGCT
CATGTCTCCGGAAGGCGCAAGAGCCCCCTACCT

ACGCGTACGCGGCCGCTCGAGCAGAACTCATCTCAGAAGAGGATCTGGCAGCAAATGATATCCTGGATT
ACAAGGATGACGACGATAAGGTTTAA

Protein Sequence: >RC216297 representing NM_018205
Red=Cloning site Green=Tags(s)

MLKKGAEAVARVARKVNETVESGDTLDAECKLVSFPIGIYKVLARNVSGQIHLITLANNELKSLTSKFM
TTFSQLRDVPVEKLAAMPALRSINLRFNPLNAEVRVIAPPLIKFDMLMSPEGARPLP

TRTRPLEQKLISEEDLAANDILDYKDDDDKV

Chromatograms: https://cdn.origene.com/chromatograms/mk6477_f05.zip

Restriction Sites: Sgfl-MluI



[View online »](#)

Cloning Scheme:


ACCN: NM_018205

ORF Size: 384 bp

OTI Disclaimer: The molecular sequence of this clone aligns with the gene accession number as a point of reference only. However, individual transcript sequences of the same gene can differ through naturally occurring variations (e.g. polymorphisms), each with its own valid existence. This clone is substantially in agreement with the reference, but a complete review of all prevailing variants is recommended prior to use. [More info](#)

OTI Annotation: This clone was engineered to express the complete ORF with an expression tag. Expression varies depending on the nature of the gene.

Components: The ORF clone is ion-exchange column purified and shipped in a 2D barcoded Matrix tube containing 10ug of transfection-ready, dried plasmid DNA (reconstitute with 100 ul of water).

- Reconstitution Method:**
1. Centrifuge at 5,000xg for 5min.
 2. Carefully open the tube and add 100ul of sterile water to dissolve the DNA.
 3. Close the tube and incubate for 10 minutes at room temperature.
 4. Briefly vortex the tube and then do a quick spin (less than 5000xg) to concentrate the liquid at the bottom.
 5. Store the suspended plasmid at -20°C. The DNA is stable for at least one year from date of shipping when stored at -20°C.

RefSeq: [NM_018205.4](#)

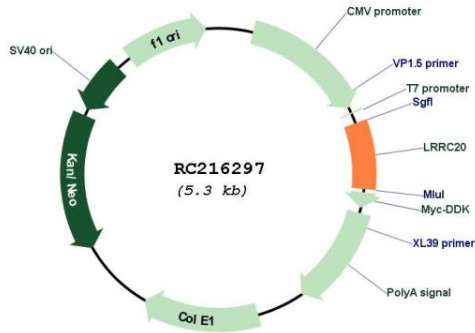
RefSeq Size: 2925 bp

RefSeq ORF: 387 bp

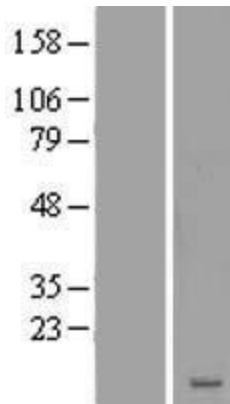
Locus ID: 55222

UniProt ID: [Q8TCA0](#)
 Cytogenetics: 10q22.1
 MW: 13.9 kDa

Product images:



Circular map for RC216297



Western blot validation of overexpression lysate (Cat# [LY413250]) using anti-DDK antibody (Cat# [TA50011-100]). Left: Cell lysates from untransfected HEK293T cells; Right: Cell lysates from HEK293T cells transfected with RC216297 using transfection reagent MegaTran 2.0 (Cat# [TT210002]).