

Product datasheet for RC216286

SIX3 (NM_005413) Human Tagged ORF Clone

Product data:

Product Type: Expression Plasmids
Product Name: SIX3 (NM_005413) Human Tagged ORF Clone
Tag: Myc-DDK
Symbol: SIX3
Synonyms: HPE2
Vector: pCMV6-Entry (PS100001)
E. coli Selection: Kanamycin (25 ug/mL)
Cell Selection: Neomycin
ORF Nucleotide Sequence: >RC216286 representing NM_005413
Red=Cloning site Blue=ORF Green=Tags(s)

TTTTGTAATACGACTCACTATAGGGCGGCCGGAATTCGTCGACTGGATCCGGTACCGAGGAGATCTGCC
GCC**CGGATCGCC**

ATGGTATTCGGCTCCCCCTAGACCTCTATTCTCCACTTCTTGTGGCAAACCTCGCCGATTCTCACC
ACCGCTCCATACTTCTGGCGAGTAGCGGGCGCGGAACGGTGCAGGAGGGCGCGCGCGGGAGGCGG
CAGCGGGCGCGGAACGGTGCAGGAGGGCGGGTCTGGCGGAGCAGGCGGGCGCGCGGGCGGCTCC
AGGGCCCCCGAAGAGTTGTCCATGTTCCAGCTGCCACCCTCAACTTCTCGCCGAGCAGGTGGCCA
CGGTCTGTGAGACGCTGGAGGAGACGGGCGACATCGAGCGGCTGGGCCGTTCTCTGGTCGCTGCCGT
GGCCCCGGGGCGTGCAGGGCCATCAACAAACACGAGTCGATCCTGCGCGCGCGCCGTGGTCGCCTTC
CACACGGGCAACTTCGCGACCTCTACCACATCCTTGAGAACCACAAGTTCACCAAGGAGTCTCACGGCA
AGCTGCAGGCCATGTGGCTCGAGGCGCACTACCAGGAGGCGGAGAAGTGCAGCGGGCGCCACTCGGCC
GGTGGACAAGTACCGCGTGCAGGAAGTTCGCGCTGCCACGCACCATCTGGGACGGCGAGCAGAAGACG
CATTGCTTCAAGGAGCGGACTCGGAGCCTGTTGCGGGAGTGGTACCTACAGGACCCTACCCCAACCCCA
GCAAGAAACGCGAACTGGCGCAGGCCACCGCCCTCACTCCACACAAGTAGGCAACTGGTTTAAGAACC
GCGGCAGCGGACCGCGCGCGCGGCAAGAACAGGCTCCAGCACAGGCCATTGGACCGAGCGGCATG
CGCTCGTGGCCGAGCCGGCTGCCACGCACGGCTCGGAGAGTCCCGTCCACGGCGGCCAGCCCGA
CCACCAGCGTGTCCAGCCTGACGGAGCGCGGACACCGGCACCTCCATCCTCTCGGTAACCTCCAGCGA
CTCGGAATGTGATGTA

ACGGTACGCGGGCGCTCGAGCAGAACTCATCTCAGAAGAGGATCTGGCAGCAATGATATCCTGGATT
ACAAGGATGACGACGATAAGGTTTAA



[View online »](#)

Protein Sequence: >RC216286 representing NM_005413
 Red=Cloning site Green=Tags(s)

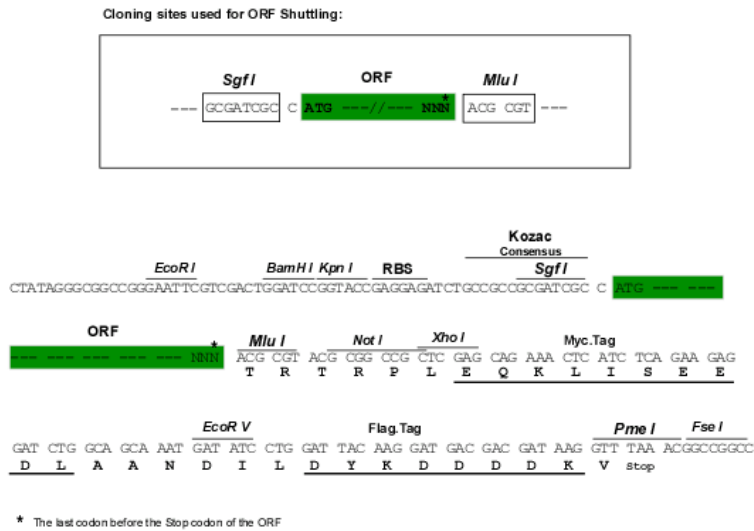
MVFRSPLDLYSSHFLLPNFADSHHRSILLASSGGGNGAGGGGGAGGGGGAGGGGGAGGGGGAGGGGGGGGS
 RAPPEELSMFQLPTLNFPEQVAVSVCETLEETGDIERLGRFLWSLPVAPGACEAINKHESILRARAVVAF
 HTGNFRDLYHILENHKFKESHGKLQAMWLEAHYQAEAKLRGRPLGPVDKYRVRKFKFPLPRTIWDGEQKT
 HCFKERTRSLLEWYLQDPYPNPSKKRELAQATGLTPTQVGNWFKNRRQRDRAAAAKNRLQHQAIGPSGM
 RSLAEPGCPHGSAPSTAASPTTSVSSLTERADTGTSLSVTSSDSECDV

TRTRPLEQKLISEEDLAANDILDYKDDDDKV

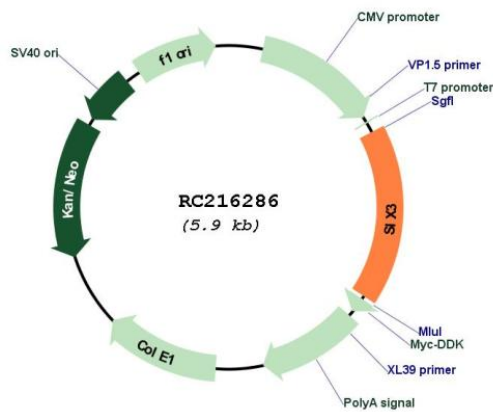
Chromatograms: https://cdn.origene.com/chromatograms/mg5090_g09.zip

Restriction Sites: SgfI-MluI

Cloning Scheme:



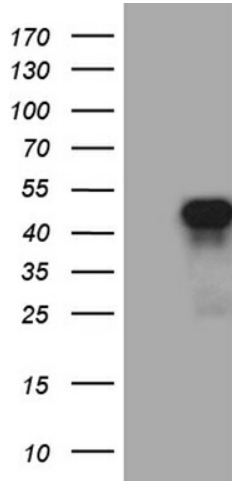
Plasmid Map:



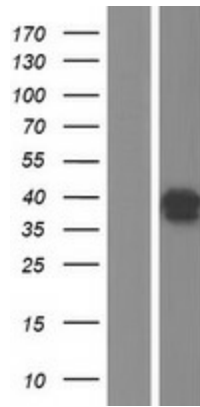
ACCN: NM_005413

ORF Size:	996 bp
OTI Disclaimer:	The molecular sequence of this clone aligns with the gene accession number as a point of reference only. However, individual transcript sequences of the same gene can differ through naturally occurring variations (e.g. polymorphisms), each with its own valid existence. This clone is substantially in agreement with the reference, but a complete review of all prevailing variants is recommended prior to use. More info
OTI Annotation:	This clone was engineered to express the complete ORF with an expression tag. Expression varies depending on the nature of the gene.
Components:	The ORF clone is ion-exchange column purified and shipped in a 2D barcoded Matrix tube containing 10ug of transfection-ready, dried plasmid DNA (reconstitute with 100 ul of water).
Reconstitution Method:	<ol style="list-style-type: none">1. Centrifuge at 5,000xg for 5min.2. Carefully open the tube and add 100ul of sterile water to dissolve the DNA.3. Close the tube and incubate for 10 minutes at room temperature.4. Briefly vortex the tube and then do a quick spin (less than 5000xg) to concentrate the liquid at the bottom.5. Store the suspended plasmid at -20°C. The DNA is stable for at least one year from date of shipping when stored at -20°C.
RefSeq:	NM_005413.1 , NP_005404.1
RefSeq Size:	1926 bp
RefSeq ORF:	999 bp
Locus ID:	6496
UniProt ID:	O95343
Cytogenetics:	2p21
Protein Families:	Druggable Genome
MW:	35.3 kDa
Gene Summary:	This gene encodes a member of the sine oculis homeobox transcription factor family. The encoded protein plays a role in eye development. Mutations in this gene have been associated with holoprosencephaly type 2. [provided by RefSeq, Oct 2009]

Product images:



HEK293T cells were transfected with the pCMV6-ENTRY control (Cat# [PS100001], Left lane) or pCMV6-ENTRY SIX3 (Cat# RC216286, Right lane) cDNA for 48 hrs and lysed. Equivalent amounts of cell lysates (5 ug per lane) were separated by SDS-PAGE and immunoblotted with anti-SIX3 (Cat# [TA811410])(1:2000). Positive lysates [LY401662] (100ug) and [LC401662] (20ug) can be purchased separately from OriGene.



Western blot validation of overexpression lysate (Cat# [LY401662]) using anti-DDK antibody (Cat# [TA50011-100]). Left: Cell lysates from untransfected HEK293T cells; Right: Cell lysates from HEK293T cells transfected with RC216286 using transfection reagent MegaTran 2.0 (Cat# [TT210002]).