

Product datasheet for **RC216285L4V**

NY-ESO-1 (CTAG1A) (NM_139250) Human Tagged ORF Clone Lentiviral Particle

Product data:

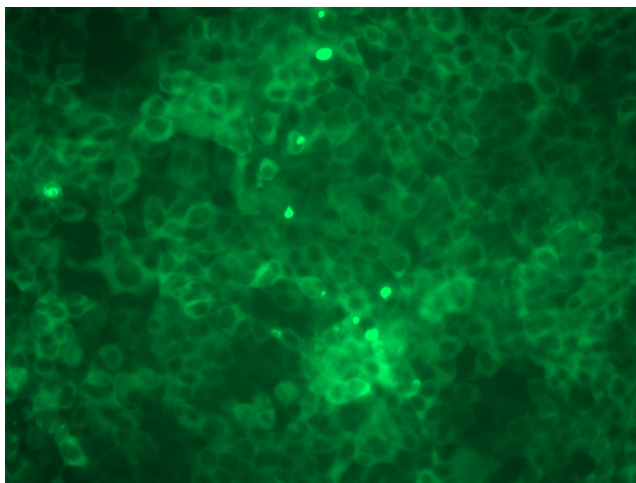
Product Type:	Lentiviral Particles
Product Name:	NY-ESO-1 (CTAG1A) (NM_139250) Human Tagged ORF Clone Lentiviral Particle
Symbol:	NY-ESO-1
Synonyms:	CT6.1; ESO1; LAGE-2; LAGE2A; NY-ESO-1
Mammalian Cell Selection:	Puromycin
Vector:	pLenti-C-mGFP-P2A-Puro (PS100093)
Tag:	mGFP
ACCN:	NM_139250
ORF Size:	540 bp
ORF Nucleotide Sequence:	The ORF insert of this clone is exactly the same as(RC216285).
OTI Disclaimer:	The molecular sequence of this clone aligns with the gene accession number as a point of reference only. However, individual transcript sequences of the same gene can differ through naturally occurring variations (e.g. polymorphisms), each with its own valid existence. This clone is substantially in agreement with the reference, but a complete review of all prevailing variants is recommended prior to use. More info
OTI Annotation:	This clone was engineered to express the complete ORF with an expression tag. Expression varies depending on the nature of the gene.
RefSeq:	NM_139250.1
RefSeq Size:	748 bp
RefSeq ORF:	543 bp
Locus ID:	246100
UniProt ID:	P78358
Cytogenetics:	Xq28
Protein Families:	Druggable Genome
MW:	18 kDa



[View online »](#)

Gene Summary:

The protein encoded by this gene is a tumor cell antigen found in various types of cancers, which makes it a good candidate for a cancer vaccine. This gene is also highly expressed in normal ovary and testis tissues. An identical copy of this gene is found on the same chromosome. [provided by RefSeq, Dec 2015]

Product images:

[RC216285L4] was used to prepare Lentiviral particles using [TR30037] packaging kit. HEK293T cells were transduced with RC216285L4V particle to overexpress human CTAG1A-mGFP fusion protein.