

Product datasheet for RC216285

NY-ESO-1 (CTAG1A) (NM_139250) Human Tagged ORF Clone

Product data:

Product Type: Expression Plasmids
Product Name: NY-ESO-1 (CTAG1A) (NM_139250) Human Tagged ORF Clone
Tag: Myc-DDK
Symbol: NY-ESO-1
Synonyms: CT6.1; ESO1; LAGE-2; LAGE2A; NY-ESO-1
Mammalian Cell Selection: Neomycin
Vector: pCMV6-Entry (PS100001)
E. coli Selection: Kanamycin (25 ug/mL)
ORF Nucleotide Sequence: >RC216285 ORF sequence
 Red=Cloning site Blue=ORF Green=Tags(s)

TTTTGTAATACGACTCACTATAGGGCGGCCGGAATTCGTCGACTGGATCCGGTACCGAGGAGATCTGCC
 GCC**CGGATCGCC**

ATGCAGGCCGAAGGCCGGGGCACAGGGGTTTCGACGGGCGATGCTGATGGCCAGGAGGCCCTGGCATT
 CTGATGGCCAGGGGCAATGCTGGCGGCCAGGAGAGCGGGTGCCACGGCGGCAGAGGTCCCCGGGG
 CGCAGGGGCAGCAAGGGCCTCGGGCCGGGAGGAGCGCCCCGCGGGTCCGCATGGCGGCGGGCTTCA
 GGGCTGAATGGATGCTGCAGATCGGGGCCAGGGGCCGGAGAGCCCTGCTTGAGTTCTACCTCGCCA
 TGCCTTTCGCGACACCCATGGAAGCAGAGCTGGCCCGCAGGAGCCTGGCCAGGATGCCCCACCGCTTCC
 CGTGCCAGGGGTGCTTCTGAAGGAGTTCAGTGTGCCGCAACATACTGACTATCCGACTGACTGCTGCA
 GACCACCGCAACTGCAGCTCTCCATCAGCTCCTGTCTCCAGCAGCTTCCCTGTTGATGTGGATCACGC
 AGTGCTTCTGCCGTGTTTTGGCTCAGCCTCCCTCAGGGCAGAGGCGC

ACGCGTACGCGGCCGCTCGAGCAGAACTCATCTCAGAAGAGGATCTGGCAGCAAATGATATCCTGGATT
 ACAAGGATGACGACGATAAGGTTTAA

Protein Sequence: >RC216285 protein sequence
 Red=Cloning site Green=Tags(s)

MQAEGRGTGGSTGDADGPGGPGIPDGPNGAGGPEAGATGGRGPRGAGAARASGPGGGAPRPHGGAAS
 GLNGCCRCGARGPESRLLEFYLAAMPFATPMEAEARRSLAQDAPPLPVPVGVLLKEFTVSGNILTIRLTAA
 DHRQLQLSISCLQQLSLLMWITQCFLPVFLAQPPSGQRR

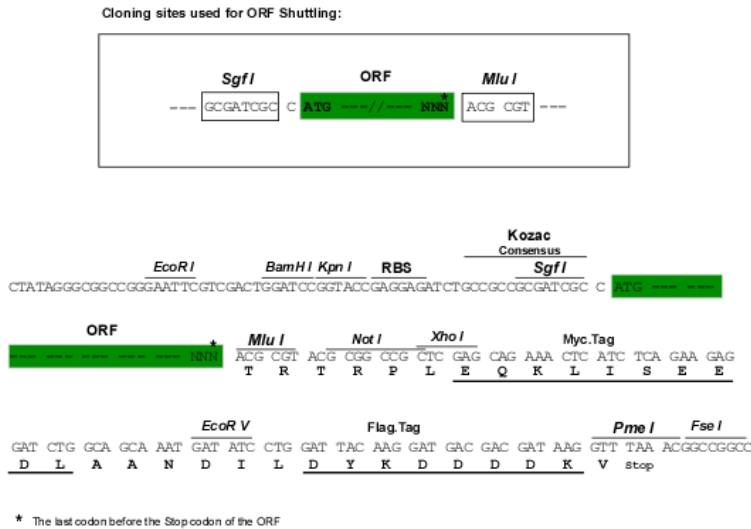
TRTRPLEQKLISEEDLAANDILDYKDDDDKV

Chromatograms: https://cdn.origene.com/chromatograms/mk6098_d03.zip



Restriction Sites: SgfI-MluI

Cloning Scheme:



ACCN: NM_139250

ORF Size: 540 bp

OTI Disclaimer: The molecular sequence of this clone aligns with the gene accession number as a point of reference only. However, individual transcript sequences of the same gene can differ through naturally occurring variations (e.g. polymorphisms), each with its own valid existence. This clone is substantially in agreement with the reference, but a complete review of all prevailing variants is recommended prior to use. [More info](#)

OTI Annotation: This clone was engineered to express the complete ORF with an expression tag. Expression varies depending on the nature of the gene.

Components: The ORF clone is ion-exchange column purified and shipped in a 2D barcoded Matrix tube containing 10ug of transfection-ready, dried plasmid DNA (reconstitute with 100 ul of water).

Reconstitution Method:

1. Centrifuge at 5,000xg for 5min.
2. Carefully open the tube and add 100ul of sterile water to dissolve the DNA.
3. Close the tube and incubate for 10 minutes at room temperature.
4. Briefly vortex the tube and then do a quick spin (less than 5000xg) to concentrate the liquid at the bottom.
5. Store the suspended plasmid at -20°C. The DNA is stable for at least one year from date of shipping when stored at -20°C.

RefSeq: [NM_139250.2](#)

RefSeq Size: 748 bp

RefSeq ORF: 543 bp

Locus ID: 246100

UniProt ID: [P78358](#)

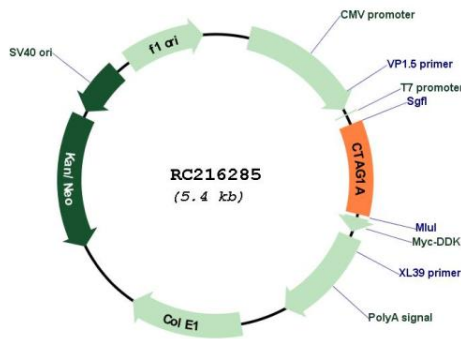
Cytogenetics: Xq28

Protein Families: Druggable Genome

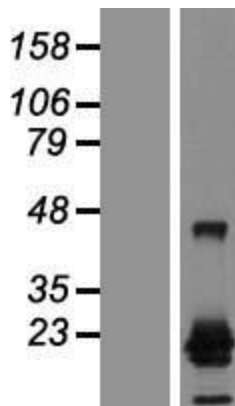
MW: 18 kDa

Gene Summary: The protein encoded by this gene is a tumor cell antigen found in various types of cancers, which makes it a good candidate for a cancer vaccine. This gene is also highly expressed in normal ovary and testis tissues. An identical copy of this gene is found on the same chromosome. [provided by RefSeq, Dec 2015]

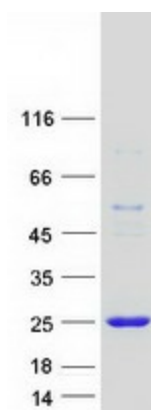
Product images:



Circular map for RC216285



Western blot validation of overexpression lysate (Cat# [LY408315]) using anti-DDK antibody (Cat# [TA50011-100]). Left: Cell lysates from untransfected HEK293T cells; Right: Cell lysates from HEK293T cells transfected with RC216285 using transfection reagent MegaTran 2.0 (Cat# [TT210002]).



Coomassie blue staining of purified CTAG1A protein (Cat# [TP316285]). The protein was produced from HEK293T cells transfected with CTAG1A cDNA clone (Cat# RC216285) using MegaTran 2.0 (Cat# [TT210002]).