

Product datasheet for **RC216275**

POT1 (NM_015450) Human Tagged ORF Clone

Product data:

Product Type:	Expression Plasmids
Product Name:	POT1 (NM_015450) Human Tagged ORF Clone
Tag:	Myc-DDK
Symbol:	POT1
Synonyms:	CMM10; GLM9; HPOT1
Mammalian Cell Selection:	Neomycin
Vector:	pCMV6-Entry (PS100001)
E. coli Selection:	Kanamycin (25 ug/mL)



[View online »](#)

ORF Nucleotide
Sequence:

>RC216275 representing NM_015450
Red=Cloning site Blue=ORF Green=Tags(s)

TTTTGTAATACGACTCACTATAGGGCGGCCGGAATTCGTCGACTGGATCCGGTACCGAGGAGATCTGCC
GCC**CGGATCGCC**

ATGCTCTTTGGTCCAGCAACAAATTATATATACACCCCTGAATCAACTTAAGGGTGGTACAATTGTCA
ATGCTATGGTGTGTGAAGTTCTTTAAGCCCATATCTAAGCAAAGGAAGTATTATTGCTCAGTTGT
AACTATTGTGGACCAGACAAATGTAAAATAACTTGCCTGCTCTTTAGTGAAACTATGAAGCCCTTCCA
ATAATTTATAAAATGGAGATATTGTTTCGCTTTACAGGCTGAAGATTCAAGTATATAAAAAGGAGACTC
AGGGTATCACCAGCTCTGGCTTTGCATCTTTGACGTTTGGAGAACTTTGGGAGCCCTATCATACTCG
CACTTCAAGCAAGTATTTAACTTCACTACTGAGGACCACAAAATGGTAGAAGCCTTACGTGTTGGGCA
TCTACTCATATGTCACCGTCTTGGACATTACTAAAATTGTGTGATGTTCCAGCAATGCAGTATTTGACC
TGACTTGTGAGCTCTTGGCAAAGCAGAAGTGGACGGAGCATATTTCTTCTAAAGGTATGGGATGGCAC
CAGGACACCATTCCATCTTGGAGAGTCTTAATACAAGACCTTGTCTTGAAGGTATTTAAGTCACATC
CATCGGCTACAAAATCTGACAATAGACATTTTAGTCTACGATAACCATGTTTCATGTGGCAAGATCTCTGA
AGGTTGGAAGCTTCTTGAATCTATAGCCTTCATACAAAACCTCAATCAATGAATTCAGAGAATCAGAC
AATGTTAAGTTTAGAGTTTCATCTTTCATGGAGGTACCAGTTACGGTCCGGGAATCAGGGTCTTGCCAGAA
AGTAACTCTGATGTGGATCAACTGAAAAAGGATTTAGAATCTGCAAAATTTGACAGCCAATCAGCATTGAG
ATGTTATCTGTCAATCAGAACCTGACGACAGCTTTCCAAGCTCTGGATCAGTATCATTATACGAGGTAGA
AAGATGTCAACAGCTATCTGCTACAATACTTACAGATCATCAGTATTTGGAGAGGACACCACTATGTGCC
ATTTTGAACAAAAAGCTCCTCAACAATACCGCATCCGAGCAAAATTTAGGTCATATAAGCCAGAAAGAC
TATTTGAGTCTGTTAACTTTCATTGCCCTAAATGTCATTTGCTGCAAGAAGTTCCACATGAGGGCGATTT
GGATATAATTTTTCAGGATGGTGAACATAAAACCCAGTTGTCAAGTTACAAAATACATCATTATATGAT
TCAAAAATCTGGACCACTAAAAATCAAAAAGGACGAAAAGTAGCAGTTCAATTTTGTGAAAAATAATGGTA
TTCTCCCGCTTTCAAATGAATGTCTACTTTTGTAGAAGGAGGTACACTCAGTGAATTTGCAAACTCTC
GAACAAGTTAATAGTGAATTCCTGTGAGATCTGGCCACGAAGACCTGGAATTTTGGACCTTTGAGCA
CCATTTCTTATAAGGAACAATACATCACTATGGATGTAACAGTGTCTAGTTTGGATCCATACAAA
ATCTAAATCCCTGGTTGATAAAACATCGTGGATTCTTCTTCTGTGGCAGAAGCACTGGGTATTGTACC
CCTCCAATATGTGTTTGTATGACCTTTACTTGTATGATGGAACAGGAGTACTAGAAGCCTATCTCATG
GATTCTGACAAATCTTCCAGATTCCAGCATCAGAAGTCTGATGGATGATGACCTTCAGAAAAGTGTGG
ATATGATCATGGATATGTTTGTCTCCAGGAATAAAAATTTGATGCATATCCGTGGTTGGAATGCTTCAT
CAAGTCATACAATGTCACAAATGGAACAGATAATCAAATTTGCTATCAGATTTTTGACACCACAGTTGCA
GAAGATGTAATC

ACGCGTACGCGGCCGCTCGAGCAGAAACTCATCTCAGAAGAGGATCTGGCAGCAATGATATCCTGGATT
ACAAGGATGACGACGATAAGGTTTAA

Reconstitution Method:

1. Centrifuge at 5,000xg for 5min.
2. Carefully open the tube and add 100ul of sterile water to dissolve the DNA.
3. Close the tube and incubate for 10 minutes at room temperature.
4. Briefly vortex the tube and then do a quick spin (less than 5000xg) to concentrate the liquid at the bottom.
5. Store the suspended plasmid at -20°C. The DNA is stable for at least one year from date of shipping when stored at -20°C.

RefSeq: [NM_015450.1](#), [NP_056265.1](#)

RefSeq Size: 2631 bp

RefSeq ORF: 1905 bp

Locus ID: 25913

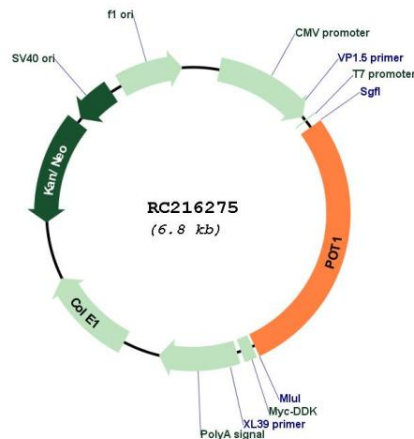
UniProt ID: [Q9NUX5](#)

Cytogenetics: 7q31.33

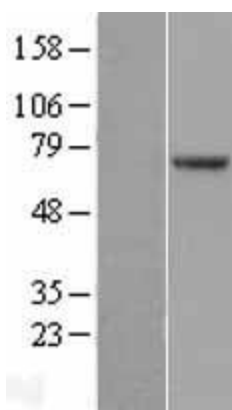
MW: 71.3 kDa

Gene Summary: This gene is a member of the telombin family and encodes a nuclear protein involved in telomere maintenance. Specifically, this protein functions as a member of a multi-protein complex that binds to the TTAGGG repeats of telomeres, regulating telomere length and protecting chromosome ends from illegitimate recombination, catastrophic chromosome instability, and abnormal chromosome segregation. Increased transcriptional expression of this gene is associated with stomach carcinogenesis and its progression. Alternatively spliced transcript variants have been described. [provided by RefSeq, Jul 2008]

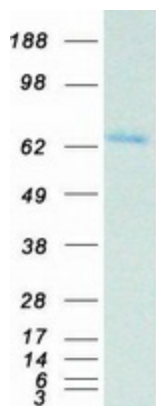
Product images:



Circular map for RC216275



Western blot validation of overexpression lysate (Cat# [LY402436]) using anti-DDK antibody (Cat# [TA50011-100]). Left: Cell lysates from untransfected HEK293T cells; Right: Cell lysates from HEK293T cells transfected with RC216275 using transfection reagent MegaTran 2.0 (Cat# [TT210002]).



Coomassie blue staining of purified POT1 protein (Cat# [TP316275]). The protein was produced from HEK293T cells transfected with POT1 cDNA clone (Cat# RC216275) using MegaTran 2.0 (Cat# [TT210002]).