

Product datasheet for RC216272

Anillin (ANLN) (NM_018685) Human Tagged ORF Clone

Product data:

Product Type:	Expression Plasmids
Product Name:	Anillin (ANLN) (NM_018685) Human Tagged ORF Clone
Tag:	Myc-DDK
Symbol:	Anillin
Synonyms:	FSGS8; scra; Scraps
Mammalian Cell Selection:	Neomycin
Vector:	pCMV6-Entry (PS100001)
E. coli Selection:	Kanamycin (25 ug/mL)
ORF Nucleotide Sequence:	>RC216272 representing NM_018685 Red=Cloning site Blue=ORF Green=Tags(s)

TTTTGTAATACGACTCACTATAGGGCGGCCGGAATTCGTCGACTGGATCCGGTACCGAGGAGATCTGCC
GCC**CGATCGCC**

ATGGATCCGTTTACGGAGAACTGCTGGAGCGAACCCGTGCCAGGCGAGAGAATCTTCAGAGAAAAATGG
CTGAGAGGCCACAGCAGCTCCAAGGTCTATGACTCATGCTAAGCGAGCTAGACAGCCACTTTCAGAAGC
AAGTAACCAGCAGCCCTCTCTGGTGGTGAAGAGAAATCTGTACAAAACCATCGCCATCAAAAAACGC
TGTTCTGACAACACTGAAGTAGAAGTTTCTAACTTGGAAAATAACAACCAAGTTGAGTCGACATCTGCAA
AATCTTGTCTCCAAGTCTGTGTCTCCTCAGGTGCAGCCACAAGCAGCAGATACCATCAGTGATTCTGT
TGCTGTCCCGGCATCACTGCTGGCATGAGGAGAGGGCTGAACTCAAGATTGGAAGCAACTGCAGCCTCC
TCAGTTAAAACACGTATGCAAAAACCTTGCAAGCAACGGCGCCGTTGGGATAATGATGATATGACAGATG
ACATTCCTGAAAGCTCACTCTTCTCACCAATGCCATCAGAGGAAAAGGCTGCTTCCCCTCCCAAACCTCT
GCTTTCAAATGCCTCGGCAACTCCAGTTGGCAGAAGGGGCGCTGGCCAATCTTGTGCAACTATTTGCT
TCCTGGGAAGATGATGTAATCACTCATTTGCAAAAACAAACAGTGTACAAGAACAGCCTGGTACCGCTT
GTTTATCCAAATTTCTCTGCAAGTGGAGCATCTGCTAGGATCAATAGCAGCAGTGTTAAGCAGGAAGC
TACATCTGTTCCTCAAGGGATGGCGATGCCTCTTTGAATAAAGCCCTATCCTCAAGTGTGATGATGCG
TCTTTGGTTAATGCCTCAATTTCCAGCTCTGTGAAAGCTACTTCTTCCAGTGAATCTACTACATCTA
TCACTGATGCTAAAAGTTGTGAGGGACAAAATCCTGAGCTACTTCCAAAACCTCCTATTAGTCCTCTGAA
AACGGGGTATCGAAACCAATTGTGAAGTCAACTTTATCCAGACAGTTCATCCAAAGGAGAATTAAGT
AGAGAAATTTGTCTGCAATCTCAATCTAAAGACAAATCTACGACACCAGGAGGAACAGGAATTAAGCCTT
TCCTGGAACGCTTTGGAGAGCGTTGTCAAGAACATAGCAAAGAAAGTCCAGCTCGTAGCACACCCACAG
AACCCCATTTACTCCAAATACAAAGGCCATCCAAGAAAGATTATTCAAGCAAGACACATCTTCATCT
ACTACCCATTTAGCACACAGCTCAAGCAGGAACGTCAAAAAGAACTAGCATGTCTTCGTGGCCGATTTG
ACAAGGGCAATATATGGAGTGCAGAAAAAGCGGAAACTCAAAAAGCAAACAACCTAGAAACCAAACAGGA
AACTCACTGTGAGAGCACTCCCCTCAAAAACACCAAGGTGTTTCAAAAACCTCAGTCACTCCAGTAACA



[View online >](#)

GAAAAGGTGACCGAAAACCAGATACCAGCCAAAAATTCTAGTACAGAACCTAAAGGTTTCACTGAATGCG
AAATGACGAAATCTAGCCCTTTGAAAAAATACATTGTTTTAGAAAGAGGACAAATCCTTAAAAAGTAACATC
AGACCCAAAGGTTGAGCAGAAAAATTGAAGTGATACGTGAAATTGAGATGAGTGTGGATGATGATGATATC
AATAGTTCGAAAGTAATTAATGACCTCTTCAGTGATGTCTAGAGGAAGGTGAACTAGATATGGAGAAGA
GCCAAGAGGAGATGGATCAAGCATTAGCAGAAAAGCAGCGAAGAACAGGAAGATGCACTGAATATCTCCTC
AATGTCTTTACTTGCACCATTGGCACAACAGTTGGTGTGGTAAGTCCAGAGAGTTTGTGTCCACACCT
AGACTGGAATTGAAAGACACCAGCAGAAGTGATGAAAGTCCAAAACCAGGAAAAATCCAAAGAATCGTG
TCCCTCGAGCTGAATCTGGTGATAGCCTTGGTTCTGAAGATCGTGATCTTCTTTACAGCATTGATGCATA
TAGATCTCAAAGATTCAAAGAAAACAAGCTCCATCAATAAAGCAGGTGATTGTTTCGGAAGGAAGATGTT
ACTTCAAACCTGGATGAAAAAATAATGCCTTTCTTGTCAAGTTAATATCAAACAGAAAAATGCAGGAAC
TCAATAACGAAATAAATATGCAACAGACAGTGATCTATCAAGCTAGCCAGGCTCTTAACTGCTGTGTTGA
TGAAGAACATGAAAAAGGTCCTAGAAGAAGTGAAGCAGAAAGACTTCTTCTAATTGCAACTGGGAAG
AGAACACTTTTGATTGATGAATTGAATAAATTGAAGAACGAAGGACCTCAGAGGAAGAATAAGGCTAGTC
CCCAAAGTGAATTTATGCCATCCAAAGGATCAGTACTTTGTGAGAAATCCGCTTGCCTCTAAAAGCAGA
TTTTGTCTGCAGTACGGTTCAGAAAACCAGATGCAGCAAATTAATACTTAACTAAAAGCAGGA
GCTGAAAAATATGGTAGCCACACCATTAGCAAGTACTTCAAACCTCTTAAACGGTGATGCTCTGACATTCA
CTACTACATTTACTCTGCAAGATGTATCCAATGACTTTGAAATAAATATTGAAGTTTACAGCTTGGTGCA
AAAGAAAGATCCCTCAGGCCCTTGATAAGAAGAAAAAACATCCAAGTCCAAGGCTATTACTCCAAAGCGA
CTCCTCACATCTATAACCACAAAAAGCAACATTCACTTCTCAGTCATGGCCAGTCCAGGAGGCTTAGTG
CTGTGCGAACCAGCAACTTCGCCCTTGTGGATCTTACACATTATCATTGTCTTCAGTAGGAAATACTAA
GTTTGTCTGGACAAGTCCCCTTTTTATCTTCTTTGGAAGTCAATTTATTTAAAAATAAAATGTCAA
GTGAATTCCAGTGTGGAAGAAAGAGTTTTCTAACCATATTTGAAGATGTTAGTGGTTTTGGTGCCTGGC
ATCGAAGATGGTGTGTTCTTTCTGAAAAGTGTATCTTATTGGACTTATCCAGATGATGAGAAACGCAA
GAATCCCATAGGAAGGATAAATCTGGCTAATTGTACCAGTCGTGATAGAACCCAGCCAACAGAGAATTT
TGTGCAAGACGCAACACTTTTGAATTAATTACTGTCCGACCACAAAGAGAAGATGACCGAGAGACTTTG
TCAGCCAATGCAGGGACACACTCTGTGTTACCAAGAACTGGCTGTCTGCAGATACTAAAGAAGAGCGGGA
TCTCTGGATGCAAAAACCAATCAAGTTCTTGTGATATTCGCCTCTGGCAACCTGATGCTTGCTACAAA
CCTATTGGAAAGCCT

ACGCGTACGCGGCCGCTCGAGCAGAAACTCATCTCAGAAGAGGATCTGGCAGCAAATGATATCCTGGATT
ACAAGGATGACGACGATAAGGTTTAA

Protein Sequence: >RC216272 representing NM_018685
 Red=Cloning site Green=Tags(s)

MDPFTEKLLERTRARRENLRKMAERPTAAPRSMTHAKRARQPLSEASNQQPLSGGEEKSCTKPSKRR
 CSDNTEVEVSNLENKQPVESTSAKSCSPSPVSPQVQQAADTISDSVAVPASLLGMRRGLNSRLEATAAS
 SVKTRMQKLAEQRRRWDNDMDTDIPESSLFSPMPSEEKAASPPKPLLSNASATPVGRRRGLANLAATIC
 SWEDDVNHSFAKQNSVQEQPGTACLKFSASGASARINSSSVKQEATFCQRDGDASLNKALSSSADDA
 SLVNASISSVKATSSPVKSTTSITDAKCEGQNPPELLPKTPI SPLKTGVSKPIVKSTLSQTVPKSGELS
 REICLQSQSKDKSTTPGGTGIKPFLERFGERCQEHSKESPARSTPHRTP.IITPNTKAIQERLQFKQDTSS
 TTHLAQQLKQERQKELACLGRFDKGNISWAEKGGNSKSKQLETKQETHCQSTPLKHKQGVSKTQSLPVT
 EKVTENQIPAKNSSTEPKGFTECEMTKSSPLKITLFL EEDKSLKVTSDPKVEQKIEVIREIEMSVDLDDI
 NSSKVINDLFDVLEEGELDMEKSQEEMDQALAESSEEQEDALNISSMSLLAPLAQTVGVVSPESLVSTP
 RLELKDTSRSDSPKPGKFORTRVPRAESGDSL GSEDRDLLYSIDAYRSQRFKETERPSIKQVIRKEDV
 TSKLDEKNNAFPCQVNIKQKMQELNNEINMQQTVIYQASQALNCCVDEEHGKGSLEEAEERLLL IATGK
 RTLLIDELNKLKNEGPQRKNKASPOSEFMPSKGSVTLSEIRLPLKADFVCSTVQKPDAAANYYYL IILKAG
 AENMVATPLASTNSLNGDALFTTTFTLQDVSNDFEINIEVYSLVQKKDPSGLDKKKKTSKSKAITPKR
 LLTSITTKSNIHSSVMASPGGLSAVRTSNFALVGSYTLSSVGN TKFVLDKVPFLSSLEGHYIYKIKCQ
 VNSSVEERGFLTIFEDVSGFGAWHRRWCVL SGNCISYWTYPDDEKRKNPIGRINLANCTSRQIEPANREF
 CARRNTFELITVRPQREDDRETLVSQCRDTLCVTKNWLSADTKEERDLWMQKLNQVLVDIRLWQPDACYK
 PIGKP

TRTRPLEQKLISEEDLAANDILDYKDDDDKV

Chromatograms: https://cdn.origene.com/chromatograms/mk6597_f02.zip

Restriction Sites: SgfI-MluI

Cloning Scheme:

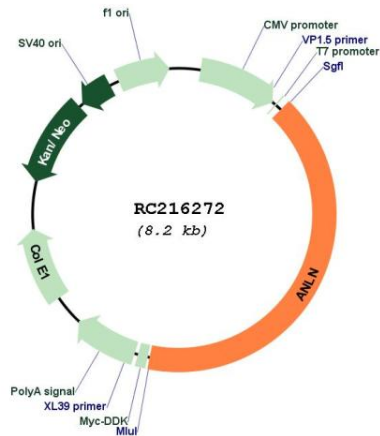


ACCN: NM_018685

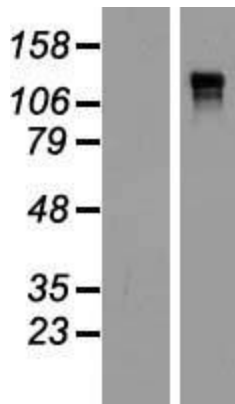
ORF Size: 3375 bp

OTI Disclaimer:	The molecular sequence of this clone aligns with the gene accession number as a point of reference only. However, individual transcript sequences of the same gene can differ through naturally occurring variations (e.g. polymorphisms), each with its own valid existence. This clone is substantially in agreement with the reference, but a complete review of all prevailing variants is recommended prior to use. More info
OTI Annotation:	This clone was engineered to express the complete ORF with an expression tag. Expression varies depending on the nature of the gene.
Components:	The ORF clone is ion-exchange column purified and shipped in a 2D barcoded Matrix tube containing 10ug of transfection-ready, dried plasmid DNA (reconstitute with 100 ul of water).
Reconstitution Method:	<ol style="list-style-type: none">1. Centrifuge at 5,000xg for 5min.2. Carefully open the tube and add 100ul of sterile water to dissolve the DNA.3. Close the tube and incubate for 10 minutes at room temperature.4. Briefly vortex the tube and then do a quick spin (less than 5000xg) to concentrate the liquid at the bottom.5. Store the suspended plasmid at -20°C. The DNA is stable for at least one year from date of shipping when stored at -20°C.
RefSeq:	NM_018685.5
RefSeq Size:	4786 bp
RefSeq ORF:	3375 bp
Locus ID:	54443
UniProt ID:	Q9NQW6
Cytogenetics:	7p14.2
Domains:	PH
Protein Families:	Druggable Genome
MW:	124 kDa
Gene Summary:	This gene encodes an actin-binding protein that plays a role in cell growth and migration, and in cytokinesis. The encoded protein is thought to regulate actin cytoskeletal dynamics in podocytes, components of the glomerulus. Mutations in this gene are associated with focal segmental glomerulosclerosis 8. Alternative splicing results in multiple transcript variants encoding different isoforms. [provided by RefSeq, Oct 2014]

Product images:



Circular map for RC216272



Western blot validation of overexpression lysate (Cat# [LY412986]) using anti-DDK antibody (Cat# [TA50011-100]). Left: Cell lysates from untransfected HEK293T cells; Right: Cell lysates from HEK293T cells transfected with RC216272 using transfection reagent MegaTran 2.0 (Cat# [TT210002]).