

## Product datasheet for **RC216270**

### **REXO1L1 (REXO1L1P) (NM\_172239) Human Tagged ORF Clone**

#### **Product data:**

Product Type:	Expression Plasmids
Product Name:	REXO1L1 (REXO1L1P) (NM_172239) Human Tagged ORF Clone
Tag:	Myc-DDK
Symbol:	REXO1L1
Synonyms:	GOR; REXO1L1
Mammalian Cell Selection:	Neomycin
Vector:	pCMV6-Entry (PS100001)
E. coli Selection:	Kanamycin (25 ug/mL)



[View online »](#)

**ORF Nucleotide Sequence:**

>RC216270 representing NM\_172239  
 Red=Cloning site Blue=ORF Green=Tags(s)

TTTTGTAATACGACTCACTATAGGGCGGCCGGAATTCGTCGACTGGATCCGGTACCGAGGAGATCTGCC  
 GCC**CGGATCGCC**

ATGTTGCGAGCCACAGCTCCCTGCTGGTCCCCCTGGATACCCAGAAGCTAAGAAGGTGGCCGAGGAGG  
 CGGCCCTGGAGGCAAGCCGCCATTTGGGAGGGGAGCAGAGCCAGGCCGGTCTCCGAAGGCAGCAAGAT  
 GTTGCGAGCCACAGCTCCCTGCTGGTCCGCCCTGGATACCCAGAAGCTAAGAAGGTGGCAAGGAGGCG  
 GCCCGGAGGCAAGCCGCCATTTGGGAGCGGAGCAGAGCCCGGCCGGTCTCCGAAGGCAGCAAGATGT  
 TGCGAGCCACAGCTCCCTGCTGGTCCACCTGGATACCCAGAAGCTAAGAAGGTGGCCGAGGAGGCGGC  
 CCTCGAGGCTCCAGAATCCACTGCCCTCTCATCAGCTGCCCAGAGCTTCGGGCTCTGGGTGCCCCAG  
 ATGCACAAGCAGGCTCAGCATTTGTGGACATCCAGGCGGAGCCCAAAACAGGGGTCCGGCGGTGCCCC  
 CAGCGTGGCCCAAGATGGTGACGGAGTCGTACTTCCCTGCGCAGAGGGGATCGGCTGCCGCTTGCC  
 AGCCGCCCAAGGCTGACAGAGAGGCCCTCGGGAGTCCGCATCTCAGCCCCAGGAAGAGGAAGACGATC  
 GCCCACTTCCAGCCCTTGCTTGGTACAGGTTACACAGATGCCAAGAGAACCCGGGTGGCCAGCAGCA  
 GCCAACGCTCCCGTGGTCCAAGGTCCGGCAGACAGCCAGGGAAGACGCGCAACAGGTTCAGGGATGGCATG  
 CAAGACCACCGCCACCACAGCTCTAAGCGAATCGTCCGTTCGTGCATCCTTACCGAGTTTGAGTTTGAAG  
 AAACCCATTATCCTCCGAAGCTCTGGGTGCCAAGTCCCCACCGTCTCCGCCGAGGCTATCTCCAAGTGT  
 TCACCGAAGAGTGTCTCAAGTTCTGCGCTCCAAGCAGGAGGCCGAGGAGAAGGCCGTGAACGAGGAGAA  
 GGTGGCTACGACTGCAGCCCCAACAGAAGCAGGTACCTGAACGTGGTCTGAACACCTCAAGAGACTG  
 AAGGGCTGACCCCAAGTCCATGCCCGGCTCAGCAGGGCCGCCCTGTACAGCCGCTCCAGGAGTTCC  
 TGCTACCCAGGACAGCTCAAGGAGAAGCGCTACCCCTCCCGCACCCGAGCGGCCGAGGCGCCGT  
 CCTCTTCACTGGCCAGGGGAAGGGGCCCGGCGACTCCTCCTGTAGGGTCTGCTGCCGTTGTGGCACCGAG  
 TACCTGGTGTCTCCTCGGGCCGCTGTGTACGCGACAGTTGTGTTATTACTGGGGCGGGTCCGCT  
 CGAGCCAGGTGGCTGGAGGCCGGTTAGCCAGTACACCTGCTGTGCAGTCTCCTGGCTGTGGGCTG  
 CCAGGTGGCAAAGCAGCAGTGCAGGACGGCCGCAAGGAGAGCCTCGATGGCTTCGTGGAGACCTTCAAG  
 AAAGAGTTGTCCAGAGACGCTTATCCAGGAATCTACGCTTGGACTGTGAGATGTGCTACACCACGCATG  
 GCCTAGAGCTGACCCGCTCACCCTGGTGGACGCCGACATGCGAGTGGTGTACGACACCTTCGTCAAGCC  
 CGACAACGAGATCGTGGACTACAACACCAGTTTTCCGGAGTACCGAGGCCGACGTCGCCAAGACGAGC  
 ATCAGTTGCCCAAGTCCAAGCATCCTGCTGAGCTTTTTCAGCGCCAAACCATCCTCATCGGGCACA  
 GCCTGGAGAGCGACCTGCTGGCCCTGAAGCTCATCCACAGCACCGTGGTGGACACGGCCGTGCTCTCCC  
 GCACTACCTGGGTTTCCCTACAAGCGCTCCCTCAGGAATCTCGCGGCCGACTACCTGGCACAGATCATC  
 CAGGACAGCCAGGACGGCCAACTCCAGCGAGGACGCAAGCGCCTGCCTGCAGCTGGTGTGTGGAAGG  
 TCCGACAGCGGCCAGATCCAGCCACGCCACCGTCCGCTCTCCCGCCGCCCTGGCCTGTCT

**ACGCGT**ACGCGGCCGCTCGAGCAGAACTCATCTCAGAAGAGGATCTGGCAGCAAATGATATCCTGGATT  
 ACAAGGATGACGACGATAAGGTTTAA



- Reconstitution Method:**
1. Centrifuge at 5,000xg for 5min.
  2. Carefully open the tube and add 100ul of sterile water to dissolve the DNA.
  3. Close the tube and incubate for 10 minutes at room temperature.
  4. Briefly vortex the tube and then do a quick spin (less than 5000xg) to concentrate the liquid at the bottom.
  5. Store the suspended plasmid at -20°C. The DNA is stable for at least one year from date of shipping when stored at -20°C.

**RefSeq:** [NM\\_172239.4](#), [NP\\_758439.4](#)

**RefSeq Size:** 7032 bp

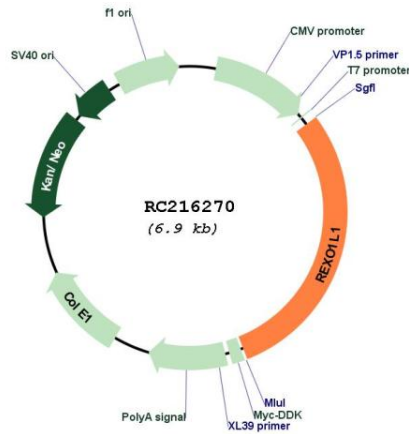
**RefSeq ORF:** 2027 bp

**Locus ID:** 254958

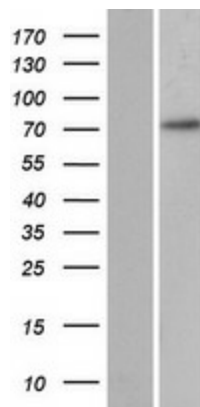
**Cytogenetics:** 8q21.2

**MW:** 73.7 kDa

**Product images:**



Circular map for RC216270



Western blot validation of overexpression lysate (Cat# [LY406758]) using anti-DDK antibody (Cat# [TA50011-100]). Left: Cell lysates from untransfected HEK293T cells; Right: Cell lysates from HEK293T cells transfected with RC216270 using transfection reagent MegaTran 2.0 (Cat# [TT210002]).