

## Product datasheet for **RC216265**

### LRRFIP1 (NM\_004735) Human Tagged ORF Clone

#### Product data:

Product Type:	Expression Plasmids
Product Name:	LRRFIP1 (NM_004735) Human Tagged ORF Clone
Tag:	Myc-DDK
Symbol:	LRRFIP1
Synonyms:	FLAP-1; FLAP1; FLIAP1; GCF-2; GCF2; HUF1-1; TRIP
Mammalian Cell Selection:	Neomycin
Vector:	pCMV6-Entry (PS100001)
E. coli Selection:	Kanamycin (25 ug/mL)



[View online »](#)

**ORF Nucleotide  
Sequence:**

>RC216265 representing NM\_004735  
 Red=Cloning site Blue=ORF Green=Tags(s)

TTTTGTAATACGACTCACTATAGGGCGGCCGGGAATTCGTCGACTGGATCCGGTACCGAGGAGATCTGCC  
 GCC**CGATCGCC**

ATGACCAGCCCCGCGCCGCTCAAAGCCGGGAGATCGACTGTTTGAGCCCAGGAGCGAGAACTGGCCG  
 AAGCCCGCTCGCTGCAAAACGGGCGGCCCGCGGGAGGCTCGCGAGATCCGCATGAAGGAGCTGGAGCG  
 GCAGCAGAAGGAGGAAGACAGTGAAGCGCTACTCTCGTAGATCCAGAAGAAACACATCGGCTTCTGATGAA  
 GACGAGCGCATGTGAGTGGGTAGTCTGGAAGCCTGAGGGTAGAAGAGAGACCAGAAAAAGATTTTACTG  
 AGAAGGGGTCTCGTAACATGCCGGCCTGTCTGCAGCCACGCTGGCCTCTCTGGTGGGACTTCTCTCG  
 GAGAGGCAGCGGAGACACCTCCATCTCCATCGACACCGAGGCATCCATCAGGGAATCAAGGACTCTCTA  
 GCAGAAGTTGAAGAGAAATATAAGAAGGCTATGGTTTCCAATGCTCAGCTAGACAATGAAAAGACAACT  
 TCATGTACCAGGTTGATACCCTAAAAGATATGTTGCTGGAGCTTGAAGAACAGCTGGCTGAATCTAGGCC  
 GCAGTACGAAGAGAAAAACAAAGATTTGAAAGGAAAAACACGCCACAGTATACTGCAATTTAGTTT  
 GCTGAAGTCAAGGAGGCCCTGAAGCAAAGAGAGAAATGCTCGAGAAACATGGAATAATCCTAAATTCAG  
 AAATAGCTACCAATGGAGAGACTTCCGACACCCCTCAATAATGTTGGATACCAAGGTCCTACCAAGATGAC  
 AAAAGAAGAGTTAAATGCCCTCAAGTCGACAGGGGATGGGACCCTAGGAAGAGCCAGTGAAGTGGAGGTG  
 AAAATGAAATCGTGGCGAATGTGGGAAAAAGAGAAATCTTGCACAATACTGAGAAAACAACACACAG  
 AGGACACAGTGAAGGACTGTGTGGACATAGAGGTATTCCCTGCTGGTGAAGTACCGAGGACCAGAAATC  
 CTCTGAAGACTGCCCATCTTAGGAACCTTAGCAGGTGCTACCTATGAGGAACAGGTTCAAAGCCAA  
 ATCTTGAGAGCAGTTCTCTCCCTGAAAACACAGTACAGGTTGAGTCAAATGAGGTGATGGTGCACCAG  
 ATGACAGGACAGAACTCCCTTGAGCCATCCAAGTGTGGAGTACTGATGGTGGAAACACACAGAG  
 GAATGTGGGAGAGGCAGCAGTACTGAGTTGAAGAGCAGGCAGGCACAGTGGCCTCGTGCCTTTAGGG  
 CATAGTGTGACACAGTTTATCATGATGACAAATGTATGGTAGAGGTCCCCCAAGAGTTAGAGACAAAGCA  
 CAGGGCATAGTTTAGAGAAAAGATTACCAACCAGGAAGCAGCTGAGCCCAAGGAGGTTCCAGCGCACAG  
 TACAGAAGTAGGTAGGGATCACAAACGAAGAAGAGGGTGAAGAAACAGGATTAAGGGACGAGAAACCAATC  
 AAGACAGAAGTTCCTGGTTCTCCAGCAGGAACTGAGGGCAACTGTCAGGAAGCGACAGGTCCAAGTACAG  
 TAGACTCAAAATGAACCTTAGATATGAAAGAGCCCGATGAAGAAAAGAGTGACCAACAGGGAGAGGC  
 ATTGGACTCATCGCAGAAGAAGACAAAGAACAAGAAAAAGAAAAACAAGAAGAAAAATCCCCAGTACCC  
 GTAGAAACCCCTTAAAGATGTTAAAAAGAGTTAACGTATCAGAACACAGATTTAAGTGAATTAAGGAAG  
 AAGAGCAGGTAAGTCTACTGACAGAAAGTCAGCAGTGAAGCCAAAACGAGGTGACTGAAAATCCAAA  
 ACAGAAAATTGCAGCAGAAAGCAGTGAATGTTGATTGTCCGGAGAATCCTAAAATTAAGTTGGATGGA  
 AAATTGACCAAGAAGGTGATGATGTACAAACAGCAGCTGAGGAGGTAAGTACTAGCTGATGGAGACACATTAG  
 ATTTTGAGGATGACACCGTTCAATCATCAGGCCGAGGGCTGGTGGTGAAGAATTAGATGAAGGTGTTGC  
 AAAAGATAATGCTAAAATAGATGGTGCCACTCAAAGCAGTCTGCAGAACCAAGAGCGAAGACGCAGAT  
 CGCTGCACCCTGCCCGAACATGAAAGTCCCTCACAGGACATTAGTATGCCTGTGAAGCAGAAAGTACAG  
 AGAGGTGTGAGATGTGAGAACATCCAAGTCAGACCGTCAGGAAAGCTTTAGACAGCAATAGCCTAGAGAA  
 CGATGACTTGTGCGCACCAAGGAAGAGGCCAGGGCACTTCAATCCAGAAAAGCAGAGAAGATACCAGAGGA  
 GGAATGAGAAGGGCAAAGCAAAGAAGACTGTACCATGTCC

**ACGCGT**ACGCGGCCGCTCGAGCAGAACTCATCTCAGAAGAGGATCTGGCAGCAATGATATCCTGGATT  
 ACAAGGATGACGACGATAAGGTTTAA

**Protein Sequence:** >RC216265 representing NM\_004735  
Red=Cloning site Green=Tags(s)

MTSPAAAQSREIDCLSPEAQKLAEARLAAKRAARAEAREIRMKELERQQKEEDSERYSRRSRNTSASDE  
DERMSVGSRGSLRVEERPEKDFTEKGSRNMPGLSAATLASLGGTSSRRGSGDTSISIDTEASIREIKDSL  
AEVEEKYKKAMVSNAQLDNEKTNFMYQVDTLKDMLLEEEQLAESRRQYEEKNKEFEREKHAHSILQFQF  
AEVKEALKQREEMLEKHGIILNSEIATNGETSDTLNNGVYQGPTKMTKEELNALKSTGDGTLGRASEVEV  
KNEIVANVGKREILHNTEKEQHTEDTVKDCVDIEVFPAGENTEDQKSSDTPFLGTLGATYEEQVQSQ  
ILESSSLPENTVQVESNEVMGAPDDRTRTRPLEPSNCWSDLDGGNHTENVGEAAVTQVEEQAGTVASCPLG  
HSDDTVYHDDKCMVEVPQELETSTGHSLEKFTNQEAAPKEVPAHSTEVGRDHNEEEGETGLRDEKPI  
KTEVPGSPAGTEGNCQEATGPSTVDTQNEPLDMKEPDEEKSDQQGEALDSSQKTKNKKKKKSPVP  
VETLKDVKKELTYQNTDLSEIKEEEQVKSTDRKSAVEAQNEVTENPKQKIAAESSENVDCPENPKIKLDG  
KLDQEGDDVQTAEEVLADGDTLDFEDDTVQSSGPRAGGEELDEGVAKDNAKIDGATQSSPAEPKSEAD  
RCTLPEHESPSQDISDACEAESTERCSEMSEHPSQTVRKALDSNSLENDL SAPGREPGHFNPE SREDTRG  
GNEKGKSKEDCTMS

TRTRPLEQKLISEEDLAANDILDYKDDDDKV

**Chromatograms:** [https://cdn.origene.com/chromatograms/mk6292\\_b04.zip](https://cdn.origene.com/chromatograms/mk6292_b04.zip)

**Restriction Sites:** Sgfl-Mlul

**Cloning Scheme:**


**ACCN:** NM\_004735

**ORF Size:** 2352 bp

**OTI Disclaimer:** The molecular sequence of this clone aligns with the gene accession number as a point of reference only. However, individual transcript sequences of the same gene can differ through naturally occurring variations (e.g. polymorphisms), each with its own valid existence. This clone is substantially in agreement with the reference, but a complete review of all prevailing variants is recommended prior to use. [More info](#)

**OTI Annotation:** This clone was engineered to express the complete ORF with an expression tag. Expression varies depending on the nature of the gene.

**Components:** The ORF clone is ion-exchange column purified and shipped in a 2D barcoded Matrix tube containing 10ug of transfection-ready, dried plasmid DNA (reconstitute with 100 ul of water).

**Reconstitution Method:**

1. Centrifuge at 5,000xg for 5min.
2. Carefully open the tube and add 100ul of sterile water to dissolve the DNA.
3. Close the tube and incubate for 10 minutes at room temperature.
4. Briefly vortex the tube and then do a quick spin (less than 5000xg) to concentrate the liquid at the bottom.
5. Store the suspended plasmid at -20°C. The DNA is stable for at least one year from date of shipping when stored at -20°C.

**RefSeq:** [NM\\_004735.4](#)

**RefSeq Size:** 3648 bp

**RefSeq ORF:** 2355 bp

**Locus ID:** 9208

**UniProt ID:** [Q32MZ4](#)

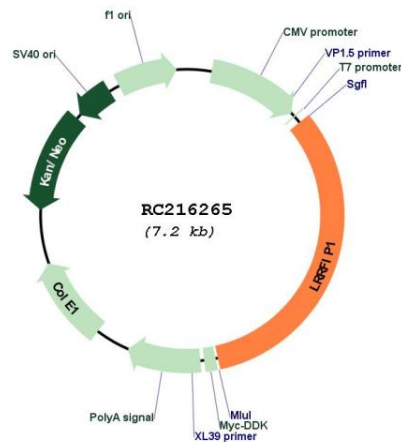
**Cytogenetics:** 2q37.3

**Protein Families:** Transcription Factors

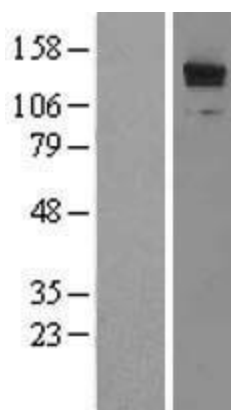
**MW:** 86.2 kDa

**Gene Summary:** Transcriptional repressor which preferentially binds to the GC-rich consensus sequence (5'-AGCCCCGGCG-3') and may regulate expression of TNF, EGFR and PDGFA. May control smooth muscle cells proliferation following artery injury through PDGFA repression. May also bind double-stranded RNA. Positively regulates Toll-like receptor (TLR) signaling in response to agonist probably by competing with the negative FLII regulator for MYD88-binding. [UniProtKB/Swiss-Prot Function]

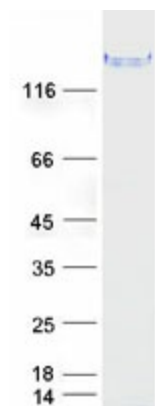
### Product images:



Circular map for RC216265



Western blot validation of overexpression lysate (Cat# [LY417786]) using anti-DDK antibody (Cat# [TA50011-100]). Left: Cell lysates from untransfected HEK293T cells; Right: Cell lysates from HEK293T cells transfected with RC216265 using transfection reagent MegaTran 2.0 (Cat# [TT210002]).



Coomassie blue staining of purified LRRFIP1 protein (Cat# [TP316265]). The protein was produced from HEK293T cells transfected with LRRFIP1 cDNA clone (Cat# RC216265) using MegaTran 2.0 (Cat# [TT210002]).