

Product datasheet for RC216262

PPHLN1 (NM_201515) Human Tagged ORF Clone

Product data:

Product Type:	Expression Plasmids
Product Name:	PPHLN1 (NM_201515) Human Tagged ORF Clone
Tag:	Myc-DDK
Symbol:	PPHLN1
Synonyms:	CR; HSPC206; HSPC232
Vector:	pCMV6-Entry (PS100001)
E. coli Selection:	Kanamycin (25 ug/mL)
Cell Selection:	Neomycin
ORF Nucleotide Sequence:	>RC216262 representing NM_201515 Red=Cloning site Blue=ORF Green=Tags(s)

TTTTGTAATACGACTCACTATAGGGCGGCCGGAATTCGTCGACTGGATCCGGTACCGAGGAGATCTGCC
GCC**CGGATCGCC**

ATGGCTTACAGAAGACGAAATGTGGTCTGAGGGACGATATGAATATGAAAGAATCCGAGAGAACGAG
CACCTCCTCGAAGTCATCCAGTGATGGCTACAATAGACTAGTTAATATTGTGCCAAAGAAACCACCACT
GCTAGACAGACCTGGTGAAGGAAGCTACAATAGATATTACAGTCATGTTGATTACCGAGACTATGACGAG
GGCCGCAGTTTTTCTCATGATCGAAGAAGTGGTCCACCTCACAGAGGAGATGAATCTGGTTATAGATGGA
CAAGAGACGATCATTCTGCAAGCAGGCAACCTGAATACAGGGACATGAGAGATGGCTTTAGAAGAAAAAG
TTTCTACTCTTCCATTATGCGAGAGAGCGGTCTCCTTATAAAAGGGACAATACTTTTTTTCAGAGAATCA
CCTGTTGGCCGAAAGGATTCTCCACACAGCAGATCTGGTCCAGTGTCAGTAGCAGAAGCTACTCTCCAG
AAAGGAGCAAATCATACTCTTCCATCAGTCTCAACATAGAAAGTCCGTGCGTCTGGTGCCTCTACAA
ACGGCAGAATGAAGGAAATCCTGAAAGAGATAAAGAGAGGCCCTGCCAGTCTTTGAAAACATCAAGAGAT
ACTTCACCCTCAAGTGGTTCAGCAGTTTCTTCAAAAGGTGTTAGACAAAACCCAGTAGGCTAACTGAAA
AGGAATTGCTGAGGCTGCAAGCAAGTGGGTGCTGAAAAGCTAGAGAAATCAGATGAAAGTAACCTGCCC
TGAAATTTCTGAGTATGAGGCGGGATCCACAGCACCATTTGTTTACTGACCAGCCAGAGGAACCTGAGTCA
AACACAACACATGGGATAGAATTATTTGAAGATAGTCAGCTAACCACTCGCTCTAAAGCAATAGCATCAA
AAACCAAAGAGATTGAACAGTTTACCACAAGACTGTGAAACTTTTCGGGATGGTGGTGAATAATGCTGAT
TGAAAAAGATCCTTCATTAGAAAAGTCTATACAGTTTGCATTGAGGCAGAATTTACATGAAATAGGTGAG
CGGTGTGTTGAAGAAGCAAGCATTTCATTGCAGAGTATGATACTTCCACTCAAGATTTGGAGAGCCTT
TT

ACGCGTACGCGGCCGCTCGAGCAGAAACTCATCTCAGAAGAGGATCTGGCAGCAAATGATATCCTGGATT
ACAAGGATGACGACGATAAGGTTTAA



[View online »](#)

Protein Sequence: >RC216262 representing NM_201515
 Red=Cloning site Green=Tags(s)

MAYRRDEMWSEGRYEYERIPRERAPPRSHPSDGYNRLVNIVPKKPPLDRPGEGSYNRYSHVDYRDYDE
 GRSF SHDRRSGPPHRGDESGYRWRDDHSASRQPEYRDMRDGFRKSFYSSHYARERSPYKRDNTEFFRES
 PVGRKDSPHSRSGSSVSSRSYSPERSKYSFSHQSHRKSVRPGASYKRQNEGNPERDKERPVSQSLKTSRD
 TSPSSGSAVSSSKVLDPKPSRLTEKELAEAAASKWAAEKLEKSDESNLPEISEYEAGSTAPLFTDQPEEPES
 NTTHGIELFEDSQLTTRSKAIAASKTKEIEQVYRQDCETFGMVVKMLIEKDP SLEKSIQFALRQNLHEIGE
 RCVEELKHFIAEYDTSTQDFGEPF

TRTRPLEQKLISEEDLAANDILDYKDDDDKV

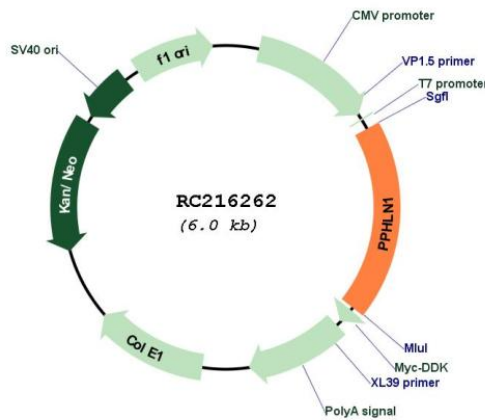
Chromatograms: https://cdn.origene.com/chromatograms/mk8055_e07.zip

Restriction Sites: SgfI-MluI

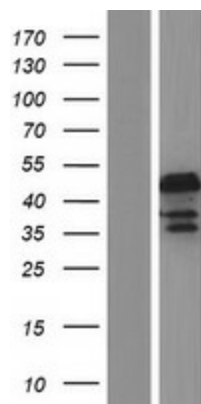
Cloning Scheme:



Plasmid Map:



ACCN:	NM_201515
ORF Size:	1122 bp
OTI Disclaimer:	The molecular sequence of this clone aligns with the gene accession number as a point of reference only. However, individual transcript sequences of the same gene can differ through naturally occurring variations (e.g. polymorphisms), each with its own valid existence. This clone is substantially in agreement with the reference, but a complete review of all prevailing variants is recommended prior to use. More info
OTI Annotation:	This clone was engineered to express the complete ORF with an expression tag. Expression varies depending on the nature of the gene.
Components:	The ORF clone is ion-exchange column purified and shipped in a 2D barcoded Matrix tube containing 10ug of transfection-ready, dried plasmid DNA (reconstitute with 100 ul of water).
Reconstitution Method:	<ol style="list-style-type: none">1. Centrifuge at 5,000xg for 5min.2. Carefully open the tube and add 100ul of sterile water to dissolve the DNA.3. Close the tube and incubate for 10 minutes at room temperature.4. Briefly vortex the tube and then do a quick spin (less than 5000xg) to concentrate the liquid at the bottom.5. Store the suspended plasmid at -20°C. The DNA is stable for at least one year from date of shipping when stored at -20°C.
RefSeq:	NM_201515.1 , NP_958923.1
RefSeq Size:	1720 bp
RefSeq ORF:	1125 bp
Locus ID:	51535
UniProt ID:	Q8NEY8
Cytogenetics:	12q12
MW:	43.2 kDa
Gene Summary:	The protein encoded by this gene is one of the several proteins that become sequentially incorporated into the cornified cell envelope during the terminal differentiation of keratinocyte at the outer layers of epidermis. This protein interacts with periplakin, which is known as a precursor of the cornified cell envelope. The cellular localization pattern and insolubility of this protein suggest that it may play a role in epithelial differentiation and contribute to epidermal integrity and barrier formation. Multiple alternatively spliced transcript variants encoding distinct isoforms have been observed. [provided by RefSeq, Jul 2008]

Product images:

Western blot validation of overexpression lysate (Cat# [LY404430]) using anti-DDK antibody (Cat# [TA50011-100]). Left: Cell lysates from untransfected HEK293T cells; Right: Cell lysates from HEK293T cells transfected with RC216262 using transfection reagent MegaTran 2.0 (Cat# [TT210002]).