

## Product datasheet for **RC216255**

### MAP6 (NM\_207577) Human Tagged ORF Clone

#### Product data:

Product Type:	Expression Plasmids
Product Name:	MAP6 (NM_207577) Human Tagged ORF Clone
Tag:	Myc-DDK
Symbol:	MAP6
Synonyms:	MAP6-N; MTAP6; N-STOP; STOP
Mammalian Cell Selection:	Neomycin
Vector:	pCMV6-Entry (PS100001)
E. coli Selection:	Kanamycin (25 ug/mL)



[View online »](#)

ORF Nucleotide  
Sequence:

>RC216255 representing NM\_207577  
Red=Cloning site Blue=ORF Green=Tags(s)

TTTTGTAATACGACTCACTATAGGGCGGCCGGAATTCGTCGACTGGATCCGGTACCGAGGAGATCTGCC  
GCCGCGATCGCC

ATGGCGTGGCCGTGCATCACGAGGGCTGCTGCATCGCCCGTCTGGAACCAAGTGGACAAAGCGGACA  
TCGCTGTGCCGCTGGTTTTACCAAGTACTCGGAGGCCACCGAGCACCCGGCGCCCGCCGAGCCACC  
GCCGCCGAGCAGCAGGGCAGCCGCGCTCGGCCCCCTCGGCGCGCGGTTGCCATAGAGACGACGAG  
CCAGCCCAGGGCAGTTGGATGCAGTTGCCGGGCAACGGGGCCAGCGCTGGGCTACCGGCGAGCGCG  
AGCCGGCGGGCCCCGGCCGAGCGGGCCGGGCTGGGCTCCGGCTCCACCTCCGGCCCCGC  
GGACTCGTGATGCGGCAGGATTACCGAGCCTGGAAGGTGCAGCGGCCGAGCCAGCTGCCGGCCGCG  
AGCGAATACCAGCCTCCGAGCTCCCTTCGAGCGGAGACCCAGTACCAGAAGGACTTCCGCGCTGGC  
CGCTGCCGCGCCGCGGGACCACCCGTGGATCCCCAAGCCGTGCAGATCTTCGGGCTCCAGGGCTC  
GGCGCCATTTCGGGGGCCCAAGCGCCGGCCGAGAGCCAGGAGCGCTGGCCAGTGCAGGCCGCGCT  
GAGGCCCGGGAGCAGGAGCGGCCCCCGGCGGAGCGGGTGGCCTGGCGGCCGAAAGGCGTCCGGGGCGG  
ACGAGCGCGACACGCGCAGGAAGGCCGGCCCTGCCTGGATTGTGCGCCGCGCCGAGGGCCTGGGGACGA  
GCAGAGCCGCTGCCCGGCCAGGCCAGGTCCAGGCCACCGCCCGAGGCTGGCAGGGGGCGGCC  
GCGGGCAGCGCCCTAACCGGCAATCCGCGAGGAGGTGGCGAGTGCAGTGAGCAGCTCTACAGGAATG  
AATTCAGGGCATGGACGGACATCAAGCTGTGAAACCAATAAAGGCCAAGCCCAAGTACAAGCCCCAGA  
TGATAAGATGGTTCATGAGACCAGCTACAGTGCTCAGTTCAAAGGAGAGGCCAGCAAGCCAAACAGCT  
GACAATAAGGTTCATTGATCGCAGAAGAATCGCAGCCTTACAGCGAACCCCTCAAGGAACCCCAAGG  
TGGAAAAACCTAGTGTTCAGAGTTCCAAACCAAAAAAGACCTCAGCGAGCCATAAGCCACGAGGAAGGC  
CAAAGACAAGCAGCGGTGTACGCCAGGCTGCCAAGAAAAAGAGCGCGGAGGGCCCGAGTACCACCAAG  
CCAGACGACAAGGAGCAAAGCAAAGAGATGAACAATAAACTGGCTGAGGGCAAAGAG

ACGCGTACGCGGCCGCTCGAGCAGAAACTCATCTCAGAAGAGGATCTGGCAGCAAATGATATCCTGGATT  
ACAAGGATGACGACGATAAGGTTTAA

## Protein Sequence:

>RC216255 representing NM\_207577  
Red=Cloning site Green=Tags(s)

MAWPCITRACCIARFWNLKADIAVPLVFTKYSEATEHPGAPPQPPPPQQAQAPALAPPSARAVAIETQ  
PAQGELDAVARATGPAPGPTGEREPAAGPGRSGPGPLGSGSTSGPADSVMRQDYRAWKVQRPEPSCRPR  
SEYQPSDAPFERETQYQKDFRAWPLPRRGDHPWIPKPVQISAASQASAPILGAPKRRPQSQRWVQAAA  
EAREQEAAPGGAGGLAAGKASGADERDTRRKAGPAWIVRRAEGLGHEQTPLPAAQAQVQATGPEAGRRA  
AADALNRQIREEVASAVSSYRNEFRAWTDIKPVKPIKAKPQYKPPDDKMVHETSYSAQFKGEASKPTTA  
DNKVIDRRIRSLYSEPFKEPPKVEKPSVQSSKPKKTSASHKPTRKAKDKQAVSQAAKKSAAEGPSTTK  
PDDKEQSKEMNKLAEAKE

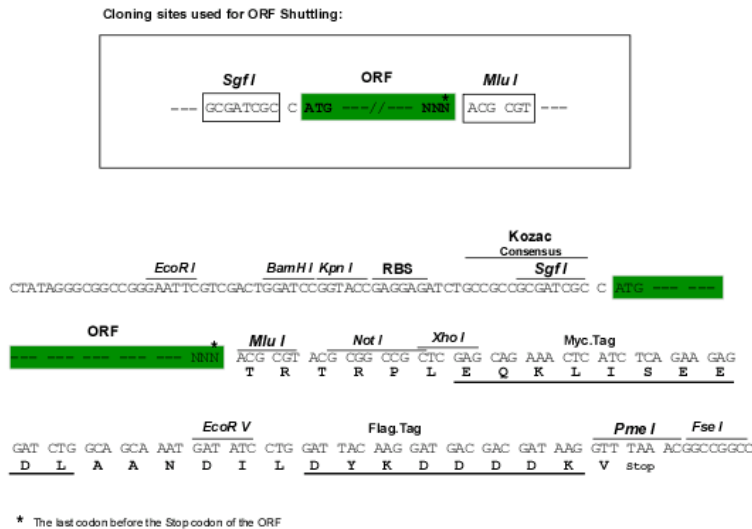
TRTRPLEQKLISEEDLAANDILDYKDDDDKV

## Chromatograms:

[https://cdn.origene.com/chromatograms/mk8060\\_a05.zip](https://cdn.origene.com/chromatograms/mk8060_a05.zip)

## Restriction Sites:

SgfI-MluI

**Cloning Scheme:**


**ACCN:** NM\_207577

**ORF Size:** 1317 bp

**OTI Disclaimer:** The molecular sequence of this clone aligns with the gene accession number as a point of reference only. However, individual transcript sequences of the same gene can differ through naturally occurring variations (e.g. polymorphisms), each with its own valid existence. This clone is substantially in agreement with the reference, but a complete review of all prevailing variants is recommended prior to use. [More info](#)

**OTI Annotation:** This clone was engineered to express the complete ORF with an expression tag. Expression varies depending on the nature of the gene.

**Components:** The ORF clone is ion-exchange column purified and shipped in a 2D barcoded Matrix tube containing 10ug of transfection-ready, dried plasmid DNA (reconstitute with 100 ul of water).

**Reconstitution Method:**

1. Centrifuge at 5,000xg for 5min.
2. Carefully open the tube and add 100ul of sterile water to dissolve the DNA.
3. Close the tube and incubate for 10 minutes at room temperature.
4. Briefly vortex the tube and then do a quick spin (less than 5000xg) to concentrate the liquid at the bottom.
5. Store the suspended plasmid at -20°C. The DNA is stable for at least one year from date of shipping when stored at -20°C.

**RefSeq:** [NM\\_207577.1](#), [NP\\_997460.1](#)

**RefSeq Size:** 4338 bp

**RefSeq ORF:** 1320 bp

**Locus ID:** 4135

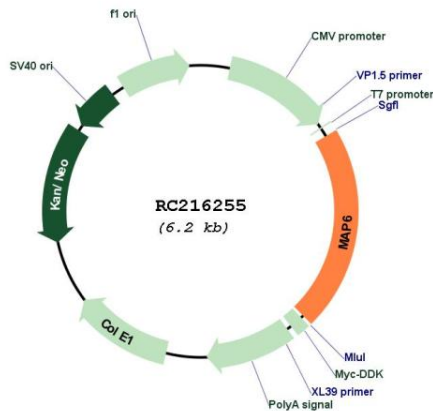
**UniProt ID:** [Q96JE9](#)

**Cytogenetics:** 11q13.5

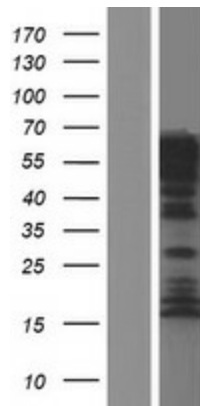
MW: 47.2 kDa

Gene Summary: This gene encodes a microtubule-associated protein. The encoded protein is a calmodulin-binding and calmodulin-regulated protein that is involved in microtubule stabilization. Two transcript variants encoding distinct isoforms have been identified for this gene. [provided by RefSeq, Jul 2008]

Product images:



Circular map for RC216255



Western blot validation of overexpression lysate (Cat# [LY403922]) using anti-DDK antibody (Cat# [TA50011-100]). Left: Cell lysates from untransfected HEK293T cells; Right: Cell lysates from HEK293T cells transfected with RC216255 using transfection reagent MegaTran 2.0 (Cat# [TT210002]).