

Product datasheet for RC216246

SLC6A15 (NM_018057) Human Tagged ORF Clone

Product data:

Product Type:	Expression Plasmids
Product Name:	SLC6A15 (NM_018057) Human Tagged ORF Clone
Tag:	Myc-DDK
Symbol:	SLC6A15
Synonyms:	hv7-3; NTT73; SBAT1; V7-3
Mammalian Cell Selection:	Neomycin
Vector:	pCMV6-Entry (PS100001)
E. coli Selection:	Kanamycin (25 ug/mL)
ORF Nucleotide Sequence:	>RC216246 representing NM_018057 Red=Cloning site Blue=ORF Green=Tags(s)

TTTTGTAATACGACTCACTATAGGGCGGCCGGAATTCGTCGACTGGATCCGGTACCGAGGAGATCTGCC
GCC**CGGATCGCC**

ATGCCCAAAATAGCAAGGTGGTAAAAAGAGAATTAGATGATGATGTTACTGAGTCTGTCAAAGACCTTC
TTTCCAATGAAGACGCAGCTGATGATGCTTTTAAGACAAGTGAATAATTGTTGATGGCCAGGAAGAGAA
AGATACAGATGTTGAAGAAGGATCTGAAGTCGAAGATGAAAGACCAGCTTGAACAGTAACTACAATAC
ATCCTGGCCCAAGTTGGATTTTCTGTAGGTTTAGGAAATGTGTGGCGATTTCCATACCTATGTCAGAAGA
ATGGGGGCGGTGCATATCTTTACCATATTTAATACTACTTATGGTAATAGGTATTTCCCTTTTTTTCTT
GGAACCTCTGTGGGTCAAAGAATTCGGCGAGGCAGCATTGGTGTATGGAATTACATAAGCCCTAAACTG
GGCGGGATTGGATTTGCAAGTTGTGTAGTGTGCTATTTTGTAGCTCTCTACTACAACGTCATCATTGGCT
GGAGTTTGTTTATTTTCTCAGTCTTTTCTCAGCAACCCCTGCCTTGGGATCAGTGTCTTTGGTGAAAAA
TGCTTCACACACTTTTGTAGAACCAGAAATGTGAACAAAGTTCTGCCACCACCTATTACTGGTACAGGGAA
GCACTGAATATTTCAAGTTCCATTTCTGAAAGTGGGGCTTAAACTGGAAGATGACCATCTGCTTGTGG
CTGCCTGGGTATGGTTTGTGGCTATGATCAAAGGCATTGAGTCTTCTGAAAAAGTTAGTATGTTAGA
GCCCTTCTCATTCTGCTAATCACCATTTCTGGATTCATCCCTCTCTCAAATCTGTTACAGATTTCTGT
GGCAAATCACACATAACACTTCATTC

ACGCGTACGCGGCCGCTCGAGCAGAAACTCATCTCAGAAGAGGATCTGGCAGCAAATGATATCCTGGATT
ACAAGGATGACGACGATAAGGTTTAA



[View online »](#)

Protein Sequence: >RC216246 representing NM_018057
Red=Cloning site Green=Tags(s)

MPKNSKVVKRELDVDESVDLLSNEDAADDAFKTSELIVDGGQEEKDTEVEEGSEVEDERPAWNSKLQY
 ILAQVGFVSVGLGNVWRFYPLCQKNGGGAYLLPYLLMLVIGIPLFFLELSVGQRIRRGSIGVWNYISPKL
 GGIGFASCVVVCFVALYNNVIIGWSLFYFSQSFQQPLWDQCPLVKNASHTFVEPECEQSSATTYYWYRE
 ALNISSSISESGLNWKMTICLLAAWVMVCLAMIKGIQSSGKVSMLPEFLILLITISGFIPLSNSVTDFC
 GQITHNTSF

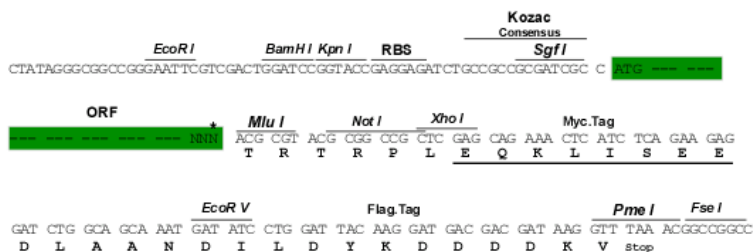
TRTRPLEQKLISEEDLAANDILDYKDDDDKV

Chromatograms: https://cdn.origene.com/chromatograms/mk8049_g02.zip

Restriction Sites: SgfI-MluI

Cloning Scheme:

Cloning sites used for ORF Shuttling:



* The last codon before the Stop codon of the ORF

ACCN: NM_018057

ORF Size: 867 bp

OTI Disclaimer: The molecular sequence of this clone aligns with the gene accession number as a point of reference only. However, individual transcript sequences of the same gene can differ through naturally occurring variations (e.g. polymorphisms), each with its own valid existence. This clone is substantially in agreement with the reference, but a complete review of all prevailing variants is recommended prior to use. [More info](#)

OTI Annotation: This clone was engineered to express the complete ORF with an expression tag. Expression varies depending on the nature of the gene.

Components: The ORF clone is ion-exchange column purified and shipped in a 2D barcoded Matrix tube containing 10ug of transfection-ready, dried plasmid DNA (reconstitute with 100 ul of water).

Reconstitution Method:

1. Centrifuge at 5,000xg for 5min.
2. Carefully open the tube and add 100ul of sterile water to dissolve the DNA.
3. Close the tube and incubate for 10 minutes at room temperature.
4. Briefly vortex the tube and then do a quick spin (less than 5000xg) to concentrate the liquid at the bottom.
5. Store the suspended plasmid at -20°C. The DNA is stable for at least one year from date of shipping when stored at -20°C.

RefSeq: [NM_018057.6](#), [NP_060527.2](#)

RefSeq Size: 4227 bp

RefSeq ORF: 870 bp

Locus ID: 55117

UniProt ID: [Q9H2J7](#)

Cytogenetics: 12q21.31

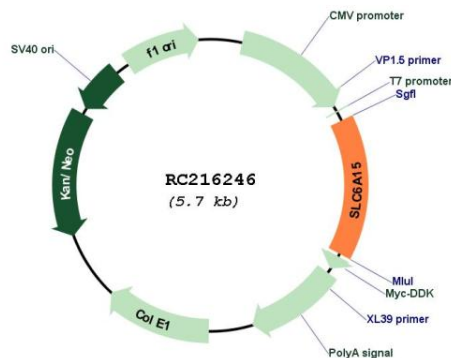
Domains: SNF

Protein Families: Druggable Genome, Transmembrane

MW: 32.1 kDa

Gene Summary: This gene encodes a member of the solute carrier family 6 protein family which transports neutral amino acids. The encoded protein is thought to play a role in neuronal amino acid transport (PMID: 16185194) and may be associated with major depression (PMID: 21521612). Multiple transcript variants encoding different isoforms have been found for this gene. [provided by RefSeq, Feb 2012]

Product images:



Circular map for RC216246