

Product datasheet for **RC216230**

NUMB (NM_003744) Human Tagged ORF Clone

Product data:

| | |
|---------------------------|---|
| Product Type: | Expression Plasmids |
| Product Name: | NUMB (NM_003744) Human Tagged ORF Clone |
| Tag: | Myc-DDK |
| Symbol: | NUMB |
| Synonyms: | C14orf41; c14_5527; S171 |
| Mammalian Cell Selection: | Neomycin |
| Vector: | pCMV6-Entry (PS100001) |
| E. coli Selection: | Kanamycin (25 ug/mL) |



[View online »](#)

**ORF Nucleotide
Sequence:**

>RC216230 representing NM_003744
 Red=Cloning site Blue=ORF Green=Tags(s)

TTTTGTAATACGACTCACTATAGGGCGGCCGGAATTCGTCGACTGGATCCGGTACCGAGGAGATCTGCC
 GCC**GCGATCGCC**

ATGAACAAATTACGGCAAAGTTTTAGGAGAAAGAAGGATGTTTATGTTCCAGAGGCCAGTCTCCACATC
 AGTGGCAGACAGATGAAGAAGGCGTTTCGCACCGGAAAATGTAGCTTCCCGTTAAGTACCTTGCCATGT
 AGAAGTTGATGAATCAAGAGGAATGCACATCTGTGAAGATGCTGTAAAAAGATTGAAAGCTACTGGAAAG
 AAAGCAGTTAAAGCAGTTCTGTGGGTCTCAGCAGATGGACTCAGAGTTGTGGATGAAAAACTAAGGACC
 TCATAGTTGACCAGACGATAGAGAAAGTTTCTTCTGTGCCCCAGACAGGAACTTTGATAGAGCCTTTTC
 TTACATATGCCGTGATGGCACCCTCGTCGCTGGATCTGTCACTGCTTCATGGCTGTCAAGGACACAGGT
 GAAAGGTTGAGCCATGCAGTAGGCTGTGCTTTTGCAGCCTGTTTAGAGCGCAAGCAGAAGCGGGAGAAGG
 AATGTGGAGTGACTGCTACTTTTGTAGTGTAGTCGGACCCTTTTACAAGAGAAGGATCATTCCGTGTAC
 AACAGCCACTGAACAAGCAGAAAGAGAGGAGATCATGAAACAAATGCAAGATGCCAAGAAAGCTGAAACA
 GATAAGATAGTCGTTGGTTCATCAGTTGCCCTGGCAACTGCCCATCCCCATCCTCTCCACCTCTC
 CTACTTCTGATGCCACGACCTCTCTGGAGATGAACAATCCTCATGCCATCCCACGCCGCGCATGCTCCAAT
 TGAACAGCTTGCTCGCAAGGCTCTTCCGAGGTTTTCTGCTCTTAGCCAGAAGATGTCACCCTTTAAA
 CGCCAATATCCCTACGCATCAATGAGTTGCCCTCCACTATGCAGAGGAAGACTGATTTCCCATTTAAA
 ATGCAGTGCCAGAAGTAGAAGGGGAGGCAGAGAGCATCAGCTCCCTGTGCTCACAGATCACCAATGCCTT
 CAGCACACCTGAGGACCCCTTCTCATCTGCTCCGATGACCAAACCAGTGACAGTGGTGGCACCACAATCT
 CCTACCTTCCAAGCTAATGGCACTGACTCAGCCTCCATGTGCTTGCTAAGCCAGCCATACTGCTCTAG
 CACCCGTAGCAATGCCTGTGCGTGAACCAACCCTTGGGCCCATGCCCTGATGCTGCTAACAAGGAAAT
 TGCAGCCACATGTTGGGGACCGAGTGGGGTCAATCTTCTGGTGTGCCTCTCCAGGTCTCTTCCAGGCC
 GGTTCATAGACGTACTCCCTCTGAGGCCGACCGATGGTTAGAAGAGGTGTCTAAGAGCGTCCGGGCTCAGC
 AGCCCCAGGCCTCAGTCTCTCTGCAGCCAGTTCTCCAGCCTCCTCCACCCACTGCCATCTCCAGCC
 AGCATCACCTTTCCAAGGGAATGCATTCTCACCTCTCAGCCTGTGCCAGTGGGTGGTCCCAGCCCTG
 CAACCAGCCTTTGTCCCTGCCAGTCTATCCTGTGGCCAATGGAATGCCCTATCCAGCCCTAATGTGC
 CTGTGGTGGGCATCACTCCCTCCAGATGGTGGCCAACGTATTTGGCACTGCAGGCCACCCTCAGGCTGC
 CCATCCCCATCAGTACCAGCCTGGTCCAGGCAGCAGACATTCCCTCACTACGAGGCAAGCAGTGTACC
 ACCAGTCCCTTTTAAGCCTCCTGCTCAGCACCTCAACGTTCTGCAGCTTTCAATGGTGTAGATGATG
 GCAGGTTGGCCTCAGCAGACAGGCATACAGAGGTTCTACAGGCACCTGCCAGTGGATCCTTTTGAAGC
 CCAGTGGGCTGCATTAGAAAATAAGTCCAAGCAGCGTACTAATCCCTCCCTACCAACCCTTTCTCCAGT
 GACTTACAGAAGACGTTTGAATTGAACTT

ACGCGTACGCGGCCGCTCGAGCAGAAACTCATCTCAGAAGAGGATCTGGCAGCAAATGATATCCTGGATT
 ACAAGGATGACGACGATAAGGTTTAA

Reconstitution Method:

1. Centrifuge at 5,000xg for 5min.
2. Carefully open the tube and add 100ul of sterile water to dissolve the DNA.
3. Close the tube and incubate for 10 minutes at room temperature.
4. Briefly vortex the tube and then do a quick spin (less than 5000xg) to concentrate the liquid at the bottom.
5. Store the suspended plasmid at -20°C. The DNA is stable for at least one year from date of shipping when stored at -20°C.

RefSeq: [NM_003744.5](#), [NP_003735.3](#)

RefSeq Size: 3614 bp

RefSeq ORF: 1923 bp

Locus ID: 8650

UniProt ID: [P49757](#)

Cytogenetics: 14q24.2-q24.3

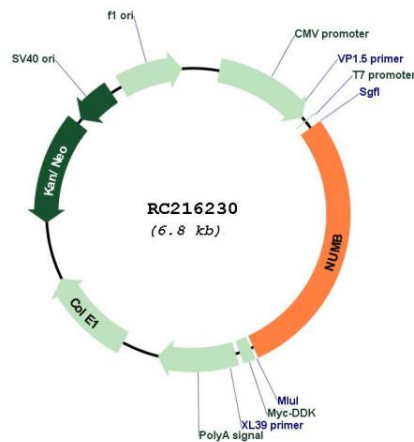
Domains: PID

Protein Pathways: Notch signaling pathway

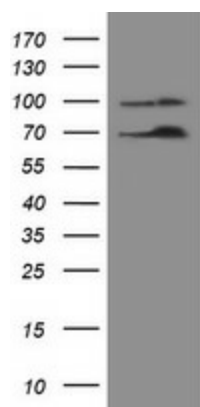
MW: 69.3 kDa

Gene Summary: The protein encoded by this gene plays a role in the determination of cell fates during development. The encoded protein, whose degradation is induced in a proteasome-dependent manner by MDM2, is a membrane-bound protein that has been shown to associate with EPS15, LNX1, and NOTCH1. Alternative splicing results in multiple transcript variants. [provided by RefSeq, Feb 2016]

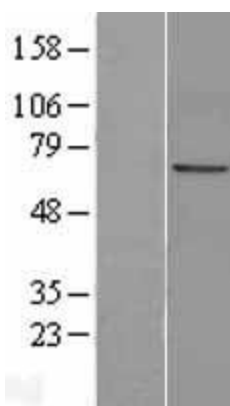
Product images:



Circular map for RC216230



HEK293T cells were transfected with the pCMV6-ENTRY control (Cat# [PS100001], Left lane) or pCMV6-ENTRY NUMB (Cat# RC216230, Right lane) cDNA for 48 hrs and lysed. Equivalent amounts of cell lysates (5 ug per lane) were separated by SDS-PAGE and immunoblotted with anti-NUMB (Cat# [TA502168]). Positive lysates [LY401229] (100ug) and [LC401229] (20ug) can be purchased separately from OriGene.



Western blot validation of overexpression lysate (Cat# [LY401229]) using anti-DDK antibody (Cat# [TA50011-100]). Left: Cell lysates from untransfected HEK293T cells; Right: Cell lysates from HEK293T cells transfected with RC216230 using transfection reagent MegaTran 2.0 (Cat# [TT210002]).