

Product datasheet for **RC216227**

Matrilin 2 (MATN2) (NM_002380) Human Tagged ORF Clone

Product data:

| | |
|---------------------------|---|
| Product Type: | Expression Plasmids |
| Product Name: | Matrilin 2 (MATN2) (NM_002380) Human Tagged ORF Clone |
| Tag: | Myc-DDK |
| Symbol: | Matrilin 2 |
| Mammalian Cell Selection: | Neomycin |
| Vector: | pCMV6-Entry (PS100001) |
| E. coli Selection: | Kanamycin (25 ug/mL) |



[View online »](#)

**ORF Nucleotide
Sequence:**

>RC216227 representing NM_002380
 Red=Cloning site Blue=ORF Green=Tags(s)

TTTTGTAATACGACTCACTATAGGGCGGCCGGGAATTCGTCGACTGGATCCGGTACCGAGGAGATCTGCC
 GCC**CGGATCGCC**

ATGAAAAAGATGCTCGCAGGCTGCTTTCTGCTGATCCTCGACAGATCGTCTCCTCCCTGCCGAGGCCA
 GGGAGCGGTACAGTGGGAGGTCCATCTCTAGGGCAGACACGCTCGGACCCACCCGAGACGGCCCTTCT
 GGAGAGTTCCTGTGAGAACAAAGCGGGCAGACCTGGTTTTTCATCATTGACAGCTCTCGCAGTGTCAACACC
 CATGACTATGCAAAGGTCAAGGAGTTCATCGTGGACATCTTGCAATTCTTGGACATTGGTCTGATGTCA
 CCCGAGTGGCCCTGCTCCAATATGGCAGCACTGTCAAGAATGAGTTCTCCCTCAAGACCTTCAAGAGGAA
 GTCCGAGGTGGAGCGTGTGTCAAGAGGATGCGGCATCTGTCCACGGGCACCATGACTGGGCTGGCCATC
 CAGTATGCCCTGAACATCGCATTCTCAGAAGCAGAGGGGGCCCGCCCTGAGGGAGAATGTGCCACGGG
 TCATAATGATCGTGACAGATGGGAGACCTCAGGACTCCGTGGCCGAGGTGGCTGCTAAGGCACGGGACAC
 GGGCATCCTAATCTTTGCCATTGGTGTGGGCCAGGTAGACTTCAACACCTTGAAGTCCATTGGGAGTGAG
 CCCCATGAGGACCATGTCTTCTTGTGGCAATTTAGCCAGATTGAGACGCTGACTCCGTGTTCCAGA
 AGAAGTTGTGCACGGCCACATGTGCAGCACCTGGAGCATAACTGTGCCCACTTCTGCATCAACATCCC
 TGGCTCATACGTCTGCAGGTGCAACAAGGCTACATTCTCAACTCGGATCAGACGACTTGCAGAATCCAG
 GATCTGTGTGCCATGGAGGACCACAACGTGAGCAGCTCTGTGTGAATGTGCCGGCTCCTTCGTCTGCC
 AGTGCTACAGTGGCTACGCCCTGGCTGAGGATGGGAAGAGGTGTGTGGCTGTGGACTACTGTGCCTCAGA
 AAACCACGGATGTGAACATGAGTGTGTAATGCTGATGGCTCCTACCTTGGCAGTGCCATGAAGGATTT
 GCTCTTAAACCAGATGAAAAACGTGCACAAAGATAGACTACTGTGCCTCATTAATCACGGATGCAGC
 ACGAGTGTGTTAACACAGATGATTCCTATTCTGCCACTGCCTGAAAGGCTTTACCCTGAATCCAGATAA
 GAAAACTGCAGAAGGATCAACTACTGTGCACTGAACAAACCCGGCTGTGAGCATGAGTGGCTCAACATG
 GAGGAGAGCTACTACTGCCGCTGCCACCGTGGCTACACTCTGGACCCCAATGGCAAACTGCAGCCGAG
 TGGACCACTGTGCACAGCAGGACCATGGCTGTGAGCAGCTGTGTCTGAACACGGAGGATTCTTCGTCTG
 CCAGTGTCTCAGAAGGCTTCTCATCAACGAGGACCTCAAGACCTGCTCCCGGGTGGATTACTGCCTGCTG
 AGTGACCATGGTGTGAATACTCTGTGTCAACATGGACAGATCCTTGCCTGTGAGTGTCTGAGGGAC
 ACGTGTCTCCGACGATGGGAAGACGTGTGCAAAATTGGACTCTTGTGCTCTGGGGGACCACGGTTGTGA
 ACATTCGTGTGTAAGCAGTGAAGATTCTTTGTGTGCCAGTGCTTTGAAGTTATATACTCCGTGAAGAT
 GGAAAACTGCAGAAGGAAAGATGTCTGCCAAGCTATAGACCATGGCTGTGAACACATTTGTGTGAACA
 GTGACGACTCATACACGTGCGAGTGCTTGGAGGATTCCGGCTCACTGAGGATGGGAAACCTGCGGAAG
 GAAGGATGTCTGCAAAATCAACCCACCATGGCTGCGAACACATTTGTGTTAATAATGGGAATTCCTACATC
 TGCAAAATGCTCAGAGGGATTTGTCTAGCTGAGGACGGAAGACGGTGAAGAAATGCACTGAAGGCCAA
 TTGACCTGGTCTTTGTGATCGATGGATCCAAGAGTCTTGGAGAAGAGAATTTTGAGGTCGTGAAGCAGTT
 TGTCACTGGAATTATAGATTCTTGGACAATTTCCCCAAAGCCGCTCGAGTGGGGCTGCTCCAGTATTCC
 ACACAGGTCCACACAGAGTTCACCTGTGAAAACCTCAACTCAGCCAAAGACATGAAAAAGCCGTGGCCC
 ACATGAAATACATGGGAAAGGCTCTATGACTGGGCTGGCCCTGAAACACATGTTTGAGAGAAGTTTAC
 CCAAGGAGAAGGGCCAGGCCCTTTCCACAAGGGTGGCCAGAGCAGCCATTGTGTTACCGGACGGACGG
 GCTCAGGATGACGTCTCCGAGTGGGCCAGTAAAGCCAAGGCCAATGGTATCACTATGTATGCTGTTGGGG
 TAGGAAAAGCCATTGAGGAGGAACTACAAGAGATTGCCTCTGAGCCACAAAACAGCATCTCTTCTATGC
 CGAAGACTTCAGCACAATGGATGAGATAAGTAAAAACTCAAGAAAGGCATCTGTGAAGCTCTAGAAGAC
 TCCGATGGAAGACAGGACTCTCCAGCAGGGAACTGCCAAAAATGGTCCAACAGCCAACAGAACTGAGC
 CAGTACCATAAATATCCAAGACCTACTTCTGTTCTAATTTTGCAGTGAACACAGATATCTGTTTGA
 AGAAGACAATCTTTACGGTCTACAAAAAGCTTTCCATTCAACAAAACCTTCAGGAAGCCCTTTGGAA
 GAAAAACAGATCAATGCAAAATGTGAAAACCTTATAATGTTCCAGAACCTTGCAACGAAGAAGTAAGAA
 AATTAACACAGCGCTTAGAAGAAATGACACAGAGAATGGAAGCCCTGAAAAATCGCTGAGATACAGA

ACGCGTACGCGGCCGCTCGAGCAGAACTCATCTCAGAAGAGGATCTGGCAGCAAATGATATCCTGGATT
 ACAAGGATGACGACGATAAGGTTTAA

Protein Sequence: >RC216227 representing NM_002380
 Red=Cloning site Green=Tags(s)

```
MEKMLAGCFLLILGQIVLLPAEARERSRGRSISRGRHARTHPTALLESSENKRADLVFIIDSSRSVNT
HDYAKVKEFIVDILQFLDIGPDVTRVGLLQYGSTVKNEFLKTFKRKSEVERAVKRMHRLSTGMTGLAI
QYALNIAFSEAEGARPLRENVPRVIMIVTDGRPQDSVAEVAAKARDTGILIFAIGVGQVDFNTLKSIGSE
PHEDHVFLVANFSQIETLTSVFQKLLCTAHMCSTLEHNCAHFCINIPGSYVCRCKQGYILNSDQTTCRIQ
DLCAMEDHNCEQLCVNVPGSFVCQCYSGYALAEADGKRCVAVDYCASENHGCEHECVNADGSYLCQCHEGF
ALNPDEKTCTKIDYCASSNHGCQHECVNTDDSYSCHCLKGFTLNPDKKTCRRINICALNKPGEHECVNM
EESYYCRCHRGYTLDPNGKTC SRVDHCAQQDHGCEQLCLNTEDSFVCQCEGFLINEDLKTCSRVDYCLL
SDHGCEYSCVNMDRSFACQCPEGHVLRSDGKCTAKLDSCALGDHGCEHSCVSSDSFVCQCFEGYILRED
GKTCRRKDVCQAIDHGCEHICVNSDDSYTCECLEGFRLTEDGKRCRRKDVCSTHHGCEHICVNNNGNSYI
CKCSEGFVLAEDGRRCKCTEGPIDLVFVIDGSKSLGEENFEVVKQFVTGIIDSLTISPKAARVGLLQYS
TQVHTEFLRNFNSAKDMKKAVAHMKYMGKGSMTGLALKHMFERSFTQEGARPLSTRVPRAAIVFDGR
AQDDVSEWASKAKANGITMYAVGVGKAIEEELQEIASEPTNKHLFYAEDFSTMDEISEKLLKKGICEALE
SDGRQDSPAGELPKMVQQPTESEPVTINIQDLLSCSNFAVQHRYLFEEDNLLRSTQKLSHSTKPSGSPLE
EKHDQCKCENLIMFQNLANEVVRKLTQRLEEMTQRMEALENRLRYR
```

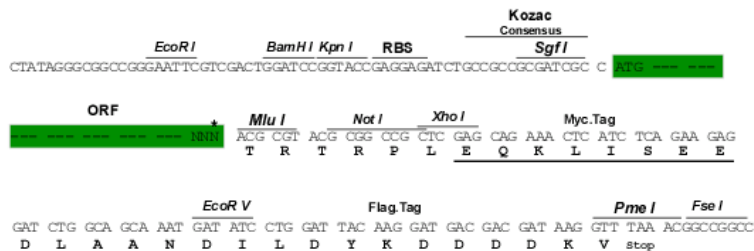
TRTRPLEQKLISEEDLAANDILDYKDDDDKV

Chromatograms: https://cdn.origene.com/chromatograms/mk6687_a12.zip

Restriction Sites: SgfI-MluI

Cloning Scheme:

Cloning sites used for ORF Shuttling:

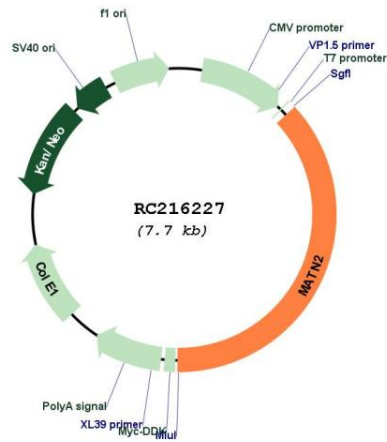


* The last codon before the Stop codon of the ORF

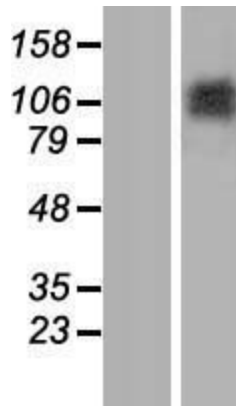
ACCN: NM_002380

| | |
|-------------------------------|---|
| ORF Size: | 2868 bp |
| OTI Disclaimer: | The molecular sequence of this clone aligns with the gene accession number as a point of reference only. However, individual transcript sequences of the same gene can differ through naturally occurring variations (e.g. polymorphisms), each with its own valid existence. This clone is substantially in agreement with the reference, but a complete review of all prevailing variants is recommended prior to use. More info |
| OTI Annotation: | This clone was engineered to express the complete ORF with an expression tag. Expression varies depending on the nature of the gene. |
| Components: | The ORF clone is ion-exchange column purified and shipped in a 2D barcoded Matrix tube containing 10ug of transfection-ready, dried plasmid DNA (reconstitute with 100 ul of water). |
| Reconstitution Method: | <ol style="list-style-type: none">1. Centrifuge at 5,000xg for 5min.2. Carefully open the tube and add 100ul of sterile water to dissolve the DNA.3. Close the tube and incubate for 10 minutes at room temperature.4. Briefly vortex the tube and then do a quick spin (less than 5000xg) to concentrate the liquid at the bottom.5. Store the suspended plasmid at -20°C. The DNA is stable for at least one year from date of shipping when stored at -20°C. |
| RefSeq: | NM_002380.5 |
| RefSeq Size: | 4122 bp |
| RefSeq ORF: | 2871 bp |
| Locus ID: | 4147 |
| UniProt ID: | O00339 |
| Cytogenetics: | 8q22.1-q22.2 |
| Domains: | EGF_CA, VWA, EGF, EGF |
| Protein Families: | Secreted Protein |
| MW: | 106.9 kDa |
| Gene Summary: | This gene encodes a member of the von Willebrand factor A domain containing protein family. This family of proteins is thought to be involved in the formation of filamentous networks in the extracellular matrices of various tissues. This protein contains five von Willebrand factor A domains. The specific function of this gene has not yet been determined. Two transcript variants encoding different isoforms have been found for this gene. [provided by RefSeq, Jul 2008] |

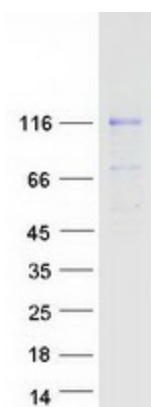
Product images:



Circular map for RC216227



Western blot validation of overexpression lysate (Cat# [LY419365]) using anti-DDK antibody (Cat# [TA50011-100]). Left: Cell lysates from untransfected HEK293T cells; Right: Cell lysates from HEK293T cells transfected with RC216227 using transfection reagent MegaTran 2.0 (Cat# [TT210002]).



Coomassie blue staining of purified MATN2 protein (Cat# [TP316227]). The protein was produced from HEK293T cells transfected with MATN2 cDNA clone (Cat# RC216227) using MegaTran 2.0 (Cat# [TT210002]).