

Product datasheet for **RC216226L4V**

IGF2BP1 (NM_006546) Human Tagged ORF Clone Lentiviral Particle

Product data:

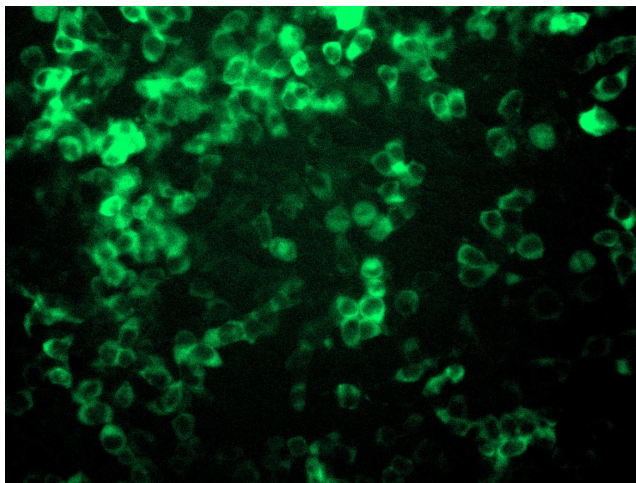
Product Type:	Lentiviral Particles
Product Name:	IGF2BP1 (NM_006546) Human Tagged ORF Clone Lentiviral Particle
Symbol:	IGF2BP1
Synonyms:	CRD-BP; CRDBP; IMP-1; IMP1; VICKZ1; ZBP1
Mammalian Cell Selection:	Puromycin
Vector:	pLenti-C-mGFP-P2A-Puro (PS100093)
Tag:	mGFP
ACCN:	NM_006546
ORF Size:	1731 bp
ORF Nucleotide Sequence:	The ORF insert of this clone is exactly the same as(RC216226).
OTI Disclaimer:	The molecular sequence of this clone aligns with the gene accession number as a point of reference only. However, individual transcript sequences of the same gene can differ through naturally occurring variations (e.g. polymorphisms), each with its own valid existence. This clone is substantially in agreement with the reference, but a complete review of all prevailing variants is recommended prior to use. More info
OTI Annotation:	This clone was engineered to express the complete ORF with an expression tag. Expression varies depending on the nature of the gene.
RefSeq:	NM_006546.3
RefSeq Size:	8769 bp
RefSeq ORF:	1734 bp
Locus ID:	10642
UniProt ID:	Q9NZI8
Cytogenetics:	17q21.32
Domains:	RRM, KH
MW:	63.3 kDa



[View online »](#)

Gene Summary:

This gene encodes a member of the insulin-like growth factor 2 mRNA-binding protein family. The protein encoded by this gene contains four K homology domains and two RNA recognition motifs. It functions by binding to the mRNAs of certain genes, including insulin-like growth factor 2, beta-actin and beta-transducin repeat-containing protein, and regulating their translation. Two transcript variants encoding different isoforms have been found for this gene. [provided by RefSeq, May 2009]

Product images:

[RC216226L4] was used to prepare Lentiviral particles using [TR30037] packaging kit. HEK293T cells were transduced with RC216226L4V particle to overexpress human IGF2BP1-mGFP fusion protein.