

Product datasheet for **RC216226**

IGF2BP1 (NM_006546) Human Tagged ORF Clone

Product data:

Product Type:	Expression Plasmids
Product Name:	IGF2BP1 (NM_006546) Human Tagged ORF Clone
Tag:	Myc-DDK
Symbol:	IGF2BP1
Synonyms:	CRD-BP; CRDBP; IMP-1; IMP1; VICKZ1; ZBP1
Vector:	pCMV6-Entry (PS100001)
E. coli Selection:	Kanamycin (25 ug/mL)
Cell Selection:	Neomycin



[View online »](#)

ORF Nucleotide Sequence:

>RC216226 representing NM_006546
 Red=Cloning site Blue=ORF Green=Tags(s)

TTTTGTAATACGACTCACTATAGGGCGGCCGGAATTCGTGACTGGATCCGGTACCGAGGAGATCTGCC
 GCC**CGGATCGCC**

ATGAACAAGCTTTACATCGGCAACCTCAACGAGAGCGTGACCCCGCGGACTTGGAGAAAGTGTTCGCG
 AGCACAAGATCTCTACAGCGGCCAGTTCTTGGTCAAATCCGGCTACGCCTTCGTGGACTGCCCGGACGA
 GCACTGGGCGATGAAGGCCATCGAACTTTCTCCGGGAAAGTAGAATTACAAGGAAAAACGCTTAGAGATT
 GAACATTCGGTGCCTAAAAAACAAGGAGCCGAAAAATCAAATCCGAAATATCCACCCAGCTCCGAT
 GGGAACTACTGGACAGCCTGCTGGCTCAGTATGGTACAGTAGAGAACTGTGAGCAAGTGAACACCGAGAG
 TGAGACGGCAGTGGTGAATGTCACCTATCCAACCGGGAGCAGACCAGGCAAGCCATCATGAAGCTGAAT
 GGCCACCAGTTGGAGAACCATGCCCTGAAGGTCTCTACATCCCCGATGAGCAGATAGCACAGGGACCTG
 AGAATGGGCGCCGAGGGGCTTTGGCTCTCGGGTCCAGCCCGCCAGGGCTCACCTGTGGCAGCGGGGGC
 CCCAGCCAAGCAGCAGCAAGTGGACATCCCCCTTCGGCTCTGGTCCCACCCAGTATGTGGGTGCCATT
 ATTTGGCAAGGAGGGGCCACCATCCGCAACATCAGAAAACAGACCAGTCCAAGATAGACGTGCATAGGA
 AGGAGAACGCAGGTGCAGCTGAAAAAGCCATCAGTGTGCACTCCACCCCTGAGGGCTGCTCTCCGCTTG
 TAAGATGATCTTGGAGATTATGCATAAAGAGGTAAGGACACAAAACGGCTGACGAGGTTCCCTGAAG
 ATCCTGGCCATAATAACTTTGTAGGGCTCTCATTGGCAAGGAAGGACGGAACCTGAAGAAGGTAGAGC
 AAGATACCGAGACAAAAATCACCATCTCCTCGTTGCAAGACCTTACCCTTTACAACCTGAGAGGACCAT
 CACTGTGAAGGGGCCATCGAGAATTGTTGAGGGCCGAGCAGGAAATATGAAGAAAGTTCGGGAGGCC
 TATGAGAATGATGTGGCTGCCATGAGCCTGCAGTCTCACCTGATCCCTGGCTGAACCTGGCTGCTGTAG
 GTCTTTTCCAGCTTCATCCAGCGCAGTCCCAGCGCTCCAGCAGCGTTACTGGGGCTGCTCCCTATAG
 CTCCTTTATGCAGGCTCCCGAGCAGGAGATGGTGCAGGTGTTTATCCCGCCAGGCAAGTGGGCGCCATC
 ATCGCAAGAAGGGGAGCAGCATCAAACAGCTCTCCCGTTCGCAAGCCTCCATCAAGATTGACCCAC
 CCGAAACACTGACTCCAAAGTTCGTATGGTTATCATCACTGGACCGCCAGAGGCCAAATCAAGGCTCA
 GGAAGAATCTATGGCAACTCAAGGAGGAGAAGTCTTTGGTCCAAGGAGGAAGTGAAGCTGGAGACC
 CACATACGTGTGCCAGCATCAGCAGCTGGCCGGTTCATTGGCAAAGGTGGAAAAACGGTGAACGAGTTGC
 AGAATTTGACGGCAGCTGAGGTGGTAGTACCAAGAGACCAGCCCTGATGAGAACGACCAGGTCATCGT
 GAAAATCATCGGACATTTCTATGCCAGTCAAGTGGCTCAACGGAAGATCCGAGACATCCTGGCCAGGTT
 AAGCAGCAGCATCAGAAGGGACAGAGTAACCAGGCCAGGCACGGAGGAAG

ACGCGTACGCGGCGCTCGAGCAGAACTCATCTCAGAAGAGGATCTGGCAGCAAATGATATCCTGGATT
 ACAAGGATGACGACGATAAGGTTTAA

Protein Sequence:

>RC216226 representing NM_006546
 Red=Cloning site Green=Tags(s)

MNKL YIGNLNESVTPADLEKVF AEHKI SYSGQFLVKSGYAFVDCPDEHWAMKAIETFSGKVELQGKRLEI
 EHSVPPKQSRKIQRNIPPQLRWEVLDSLLAQYGTVENCEQVNTSESETAVVNVTYSNRETRQAIMKLN
 GHQLENHALKVSYPDEQIAQGPENRRGGFSGRQPRQSPVAAGAPAKQQQVDIPLRLLVPTQYVGA
 IGKEGATIRNITKQTQSKIDVHRKENAGAAEKAI SVHSTPEGSSACKMILEIMHKEAKDTKTADAVPLK
 ILAHNNFVGRLLIGKEGRNLKQVEQDTETKITISSLQDLTLNPERTITVKGAIENCCRAEQEIMKKVREA
 YENDVAAMSLQSHLIPGLNLAAVGLFPASSAVPPPSSVTGAAPYSSFMQAPEQEMVQVIPAQAVGAI
 IGKKGQHIKQLSRFASASIKIAPPETPDSKVRMVIITGPPEAQFKAQGRIYGLKEENFFGPKKEVKLET
 HIRVPASAAGRVIGKGGKTVNELQNLTAEEVVVPRDQTPDENDQIVKII GHFYASQMAQRKIRDILAQV
 KQQHQKQSNQAQARRK

TRTRPLEQKLISEEDLAANDILDYKDDDDKV

Chromatograms:

https://cdn.origene.com/chromatograms/mk6049_a04.zip

Restriction Sites:

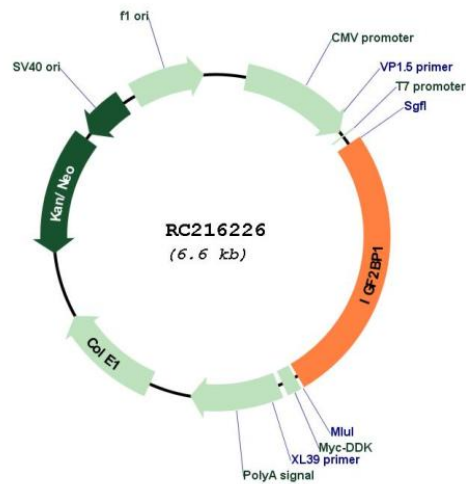
Sgfl-Mlul

Cloning Scheme:

Cloning sites used for ORF Shutting:



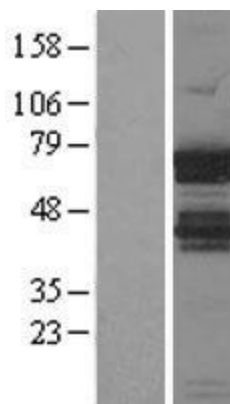
* The last codon before the Stop codon of the ORF

Plasmid Map:


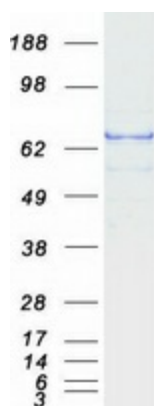
ACCN: NM_006546

ORF Size: 1731 bp

OTI Disclaimer:	The molecular sequence of this clone aligns with the gene accession number as a point of reference only. However, individual transcript sequences of the same gene can differ through naturally occurring variations (e.g. polymorphisms), each with its own valid existence. This clone is substantially in agreement with the reference, but a complete review of all prevailing variants is recommended prior to use. More info
OTI Annotation:	This clone was engineered to express the complete ORF with an expression tag. Expression varies depending on the nature of the gene.
Components:	The ORF clone is ion-exchange column purified and shipped in a 2D barcoded Matrix tube containing 10ug of transfection-ready, dried plasmid DNA (reconstitute with 100 ul of water).
Reconstitution Method:	<ol style="list-style-type: none">1. Centrifuge at 5,000xg for 5min.2. Carefully open the tube and add 100ul of sterile water to dissolve the DNA.3. Close the tube and incubate for 10 minutes at room temperature.4. Briefly vortex the tube and then do a quick spin (less than 5000xg) to concentrate the liquid at the bottom.5. Store the suspended plasmid at -20°C. The DNA is stable for at least one year from date of shipping when stored at -20°C.
RefSeq:	NM_006546.4
RefSeq Size:	8769 bp
RefSeq ORF:	1734 bp
Locus ID:	10642
UniProt ID:	Q9NZI8
Cytogenetics:	17q21.32
Domains:	RRM, KH
MW:	63.3 kDa
Gene Summary:	This gene encodes a member of the insulin-like growth factor 2 mRNA-binding protein family. The protein encoded by this gene contains four K homology domains and two RNA recognition motifs. It functions by binding to the mRNAs of certain genes, including insulin-like growth factor 2, beta-actin and beta-transducin repeat-containing protein, and regulating their translation. Two transcript variants encoding different isoforms have been found for this gene. [provided by RefSeq, May 2009]

Product images:

Western blot validation of overexpression lysate (Cat# [LY401963]) using anti-DDK antibody (Cat# [TA50011-100]). Left: Cell lysates from untransfected HEK293T cells; Right: Cell lysates from HEK293T cells transfected with RC216226 using transfection reagent MegaTran 2.0 (Cat# [TT210002]).



Coomassie blue staining of purified IGF2BP1 protein (Cat# [TP316226]). The protein was produced from HEK293T cells transfected with IGF2BP1 cDNA clone (Cat# RC216226) using MegaTran 2.0 (Cat# [TT210002]).