

Product datasheet for RC216224

TJP1 (NM_175610) Human Tagged ORF Clone

Product data:

Product Type:	Expression Plasmids
Product Name:	TJP1 (NM_175610) Human Tagged ORF Clone
Tag:	Myc-DDK
Symbol:	TJP1
Synonyms:	ZO-1
Mammalian Cell Selection:	Neomycin
Vector:	pCMV6-Entry (PS100001)
E. coli Selection:	Kanamycin (25 ug/mL)
ORF Nucleotide Sequence:	>RC216224 representing NM_175610 Red=Cloning site Blue=ORF Green=Tags(s)

TTTTGTAATACGACTCACTATAGGGCGGCCGGAATTCGTCGACTGGATCCGGTACCGAGGAGATCTGCCGCCGCGATCGCC

ATGTCCGCCAGAGCTGCGGCCGCAAGAGCACAGCAATGGAGGAAACAGCTATATGGGAACAACATACAGTGACGCTTCACAGGGCTCCTGGATTTGGATTTGGAATTGCAATATCTGGTGGACGAGATAATCCTCATTTCAGAGTGGGAAACGTCAATAGTGATTCAGATGTGCTGAAAGGAGGACCAGCTGAAGGACAGCTACAGAAAATGACCGAGTTGCAATGGTTAACGGAGTTTCAATGGATAATGTTGAACATGCTTTTGTGTTCCAGAACTAAGGAAAAGTGGGAAAAATGCAAAAATTACAATTAGAAGGAAGAAGAAAGTTCAAATACCAGTAAGTCGTCCTGATCCTGAACCAAGTATCTGATAATGAAGAAGATAGTTATGATGAGGAAATACATGATCCAAGAAGTGGCCGGAGTGGTGTGGTTAACAGAAGGAGTGAGAAGATTTGGCCGAGGGATAGAAGTCAAGTAGAGAGGAGCTTGTCCCGCGGTCCAGACAGGCGGTGAGTGGCTTCCAGCCAGCCTGTAAACCTACTAAAGTCACTGGTGAATCCCGGAAAAATGAAGAATATGGTCTTCGATTGGCAAGCCATATATTTGTTAAGGAAATTTACAAGATAGTTTGGCAGCAAGAGATGGCAATATCAAGAAGGTGATGTTGATTGAAGATAAATGTACTGTGACAGAAAATATGTCATTGACAGATGCAAAAGACATTGATAGAAAGGTCTAAAGGCAAATTAATAAGTGTCAAGAGATGAACGGGCTACGCTATTGAATGTCCCTGATCTTTCTGACAGCATCCACTCTGCTAATGCCTCTGAGAGAGACGACATTTAGAAAATTCAGTCACTGGCATCAGATCATTCTGGTCGATCACACGATAGGCCTCCCGCCGCGAGCCGGTACGATCTCCTGACCAGCGGTCCAGAGCCTTCTGATCATTCCAGGCACTCGCCGAGCAGCAAGCAATGGCAGTCTCCGGAGTAGAGATGAAGAGAGAATTTCTAAACCTGGGGCTGTCTCAACTCCTGTAAGCATGCTGATGATCACACCTAAAACAGTGAAGAAGTTACAGTTGAAAGAAATGAGAAACAACACCTTCTCTCCAGAACCAAGCCTGTGTATGCCCAAGTTGGGCAACCAGATGTGGATTTACCTGTCAGTCCATCTGATGGTGTCTACCTAATTCAACTCATGAAGATGGGATTTCTCGGCCAGCATGAAATGGTAAAATTCAGAAAAGGAGATAGTGTGGGTTTGGCGCTGGCTGGTGGAAATGATGTTGAAATTTGTAGCTGGCCTTCTAGAAGATAGCCCTGCAGCAAGGAAGGCTTAGAGGAAGGTGATCAATCTCAGGGTAAACAACGTAGATTTACAATATCATAAGAGAAGAAGCCGTCCTTTCTGCTTGACCTC



CCTAAAGGAGAAGAAGTGACCATATTGGCTCAGAAGAAGAAGGATGTTTATCGTCGCATTGTAGAATCAG
 ATGTAGGAGATTCTTTCTATATTAGAACCATTTTGAATATGAAAAGGAATCTCCCTATGGACTTAGTTT
 TAACAAAGGAGAGGTGTTCCGTGTTGTGGATACCTTGTACAATGGAAAACCTGGGCTCTGGCTTGCTATT
 CGAATTGGTAAAAATCATAAGGAGGTAGAACGAGGCATCATCCCTAATAAGAACAGAGCTGAGCAGCTAG
 CCAGTGTACAGTATACACTTCCAAAAACAGCAGGCGGAGACCGTGCTGACTTCTGGAGATTGAGAGGCT
 TCGCAGCTCCAAGAGAAATCTTCGAAAAAGCAGAGAGGATTTGTCCGCTCAGCCTGTTCAAACAAAGTTT
 CCAGCTTATGAAAGAGTGGTTCTTCGAAAGCTGGATTTCTGAGGCCTGTAAACATTTTTGGACCAATAG
 CTGATGTTGCCAGAGAAAAGCTGGCAAGAGAAGAACAGATATTTATCAAATTGCAAAGAGTGAACCACG
 AGACGCTGGAACAGCAACGTAGCTCTGGCATTATTCGCTGCATACAATAAAGCAAATCATAGATCAA
 GACAAACATGCTTTATTAGATGTAACACCAAATGCAGTTGATCGTCTTAACTATGCCAGTGGTATCCAA
 TTGTTGATTTCTTAAACCCTGATTCTAAGCAAGGAGTAAAAACAATGAGAATGAGGTTATGTCCAGAATC
 TCGGAAAAGTGCCAGGAAGTTATACGAGCGATCTCATAAACTTCGTAATAAATCACCATCTTTTTACA
 ACTACAATTAACCTAAATCAATGAATGATGGTTGGTATGGTGCCTGAAAGAAGCAATTAACAACAGC
 AAAACCAGCTGGTATGGGTTCCGAGGGAAAGGCGGATGGTGTACAAGTATGACCTTGATTTGCATGA
 TGATCGTCTGTCTACCTGTGCTCAGCTCCAGTAGTGAATACTCAATGTATAGCACGGACAGTAGACACT
 TCTGACTATGAAGACACAGACACAGAAGCGGGGCTACACTGATCAAGAACTAGATGAAACTCTTAATG
 ATGAGGTTGGGACTCCACCGGAGTCTGCCATTACACGGTCTCTGAGCCTGTAAGAGAGGACTCCTCTGG
 AATGCATCATGAAAACCAAACATATCCTCTTACTCACCACAAGCGCAGCCACAACCAATTCATAGAATA
 GACTCCCTGGATTTAAGCCAGCCTCTCAACAGGTGTATAGAAAGGATCCATATCCCAGGAAAATGATGA
 GGCAGAACCATGTTTTGAAACAGCCAGCCGTTAGTCAACCAGGGCACAGGCCAGACAAAGAGCCTAATCT
 GACCTATGAACCCCAACTCCCATACGTAGAGAAACAAGCCAGCAGAGACCTCGAGCAGCCACATACAGA
 TACGAGTCTCAAGCTATACGGACCAGTTTTCTCGAACTATGAACATCGTCTGCGATACGAAGATCGCG
 TCCCCATGTATGAAGAACAGTGGTCAATTTATGATGACAACAGCCCTACCCATCTCGGCACCTTTTGA
 TAATCAGCACTCTCAAGACCTTGACTCCAGCAGCATCCCGAAGAGTCTCAGAACGAGGTAATTTCCA
 CGTTTTGAAGAGCCAGCCCTCTGTCTTACGACAGCAGACCAGTTACGAACAGGCACCTAGAGCATCCG
 CCCTGCGGCACGAAGAGCAGCCAGCTCCTGGGTATGACACACATGGTAGACTCAGACCGGAAGCCAGCC
 CCACCCTCAGCAGGGCCCAAGCCTGCAGAGTCCAAGCAGTATTTTGGCAATATTCACGCGATTACGAG
 CAAGTACCACCCCAAGGATTTACCTCTAGAGCAGGTCAATTTGAGCCTCTCCATGGTGTGCAGCTGTCC
 CTCGCTGATACCTTCATCTCAGCATAAGCCAGAAGCTCTGCCTTCAAACACCAAACCACTGCCTCCACC
 CCCAACTCAAACCGAAGAAGAGGAAGATCCAGCAATGAAGCCACAGTCTGTACTACCAGAGTTAAGATG
 TTTGAAAACAAAAGATCTGCATCCTTAGAGACCAAGAAGGATGTAATGACACTGGCAGTTTTAAGCCTC
 CAGAAGTAGCATCTAAACCTTCAAGTGTCCCATCATTGGTCCCAAACCACTTCTCAGAATCAATTCAG
 TGAACATGACAAAACCTGTACAGGATCCAGAACCTCAAAAACCTCAACTGAAGCCACCTGAAGATATT
 GTTCGGTCCAATCATTATGACCCTGAAGAAGATGAAGAATATTATCGAAAACAGCTGTACTTTGACC
 GAAGAAGTTTTGAGAATAAGCCTCCTGCACACATTGCCGCCAGCCATCTCTCCGAGCCTGCAAAGCCAGC
 GCATTCTCAGAATCAATCAAATTTTTCTAGTTATTTCTTCAAAGGGAAAGCCTCCTGAAGCTGATGGTGTG
 GATAGATCATTGGCGAGAAACGCTATGAACCCATCCAGGCCACTCCCCCTCCTCCTCATTGCCCTCGC
 AGTATGCCAGCCATCTCAGCCTGTACCAGCGCTCTCTCCACATACATTCTAAGGGAGCACATGGTGA
 AGGTAATTCAGTGTCAATGGATTTTCAGAATTCCTTAGTGTCAAACAGACCCACCTCCATCTCAGAAT
 AAGCCAGCAACTTTCAGACCACCAACCCGAGAAGATACTGCTCAGGCAGCTTTCTATCCCCAGAAAAGTT
 TTCAGATAAAGCCCAAGTTAATGGAACGAAACAGACTCAGAAAACAGTCACTCCAGCATACAATCGATT
 CACACCAAACCATATACAAGTTCTGCCGACCATTTGAACGCAAGTTTGAAGTCTCAAATTCATCAC
 AATCTTCTGCCAAGTGAACCTGCACATAAACCTGACTTGTCTTCAAACCTCCACTTCTCCAAAACCTC
 TTGTGAAATCGCACAGTTTGGCACAGCCTCCTGAGTTTGACAGTGGAGTTGAAACTTTCTATCCATGC
 AGAGAAGCCTAAATATCAAATAAATAATATCAGCACAGTGCCTAAAGCTATTCTGTGAGTCTTCAGCT
 GTGGAAGAGGATGAAGATGAAGATGGTCATACTGTGGTGGCCACAGCCCGAGGCATATTTAACAGCAATG
 GGGCGTGTGAGTTCCATAGAAACTGGTGTAGTATAATTATCCCTCAAGGAGCCATCCCGAAGGAGT
 TGAGCAGGAAATCTATTTCAAGGTCTGCCGGGACAACAGCATCCTTCCACCTTTAGATAAAGAGAAAGGT
 GAAACACTGTGAGTCTTTGGTGTGTGGTCCCCATGGCCTCAAGTTCTGAAAGCCTGTGGAGCTGC
 GCTTACCACACTGTGATCCTAAACCTGGCAAAAACAAGTGTCTTCCCGGAGATCCAAATATCTCGTTGG
 AGCAAACCTGTGTTTCTGTCTTATTGACCATTT

ACGCGTACGCGGCCGCTCGAGCAGAACTCATCTCAGAAGAGGATCTGGCAGCAAATGATATCCTGGATT
ACAAGGATGACGACGATAAGGTTTAA

Protein Sequence:

>RC216224 representing NM_175610
Red=Cloning site Green=Tags(s)

MSARAAAAKSTAMEETAWEQHTVTLHRAPGFGFGIAISGGRDNPHFQSGETSIVISDVLKGGPAEGQLQ
ENDRVAMVNGVSMNDNEHAFVAVQLRKSGKNAKITIRKKKQVQIPVSRDPPEVSDNEEDSYDEEIHDP
SGRSGVNRNRSEKIWPRDRSASRERSLSPRSDRRSVASSQPAKPTKVTLVKSRKNEEYGLRLASHIFVKE
ISQDSLARDGNIQEGDVVLKINGTVTENMSL TDAKTL IERSKGLKMMVVQORDERATLLNVPDLSDSIHS
ANASERDDISEIQSLASDHSGRSHDRPPRRSRSPDQRSEPSDHSRHSPPQPSNGLSRDEERISKPG
AVSTPVKHADDHTPKTVEEVTVERNEKQTPSLPEPKPVYAQVGGQPDVLDLVPSPSDGVLPNSTHEDGILRP
SMKLVKFRKGDVGLRLAGGNDVGFVAGVLEDSPAAGELEEGDQILRVNNVDF TNIIREEAVLFLDL
PKGEEVTLAQKKDVYRRIVESDVGDSFYIRTHFEYEKESPYGLSFNKGEVFRVVDL YNGKLGSLAI
RIGKNHKEVERGIIPKNRAEQLASVQYTLPKTAGGDRADFWRFRGLRSSKRNLKRSREDL SAQPVQTKF
PAYERVVLRAGFLRPVTFIFGPIADVAREKLAREEPDIYQIAKSEPRDAGTDQRSSGIIRLHTIKQIIDQ
DKHALLDVTNPAVDRLNYAQWYPIVVFLNPD SKQGVKTMRMRLCPESRKSARKLYERSHKLKRNHHLFT
TTINLSMNDGWYALKEAIQQQQQLVWVSEGKADGATSDDLLDHDRLSYLSAPGSEYSMYSTDSRHT
SDYEDTDEGGAYTDQELDELNDEVGTPPESAITRSSEPVREDSSGMHENQTYPPYSPQAQPPIHRI
DSPGFKPASQVYRKDPYPEEMMRQNHV LKQPAVSHPGHRPDKEPNLTYPQLPYVEKQASRDLEQPT YR
YESSSYTDQF SRNYEHLRYEDRVPMYEEQWSYDDKQPYPSRPPFDNQHSQDLDSRQHPEESSERGYFP
RFEEPAPLSYDSRPRYEQAPRASALRHEEQPAPGYDTHGRLRPEAQPHPSAGPKPAESKQYFEQYSRYE
QVPPQGF TSRAGHFEPLHGAAAVPPLIPSSQHKPEALPSNTKPLPPPPTQTEEEEDPAMKQSVL TRVKM
FENKRSASLETKKD VNDTGSFKPPEVASKPSGAPIIGPKPTSQNFSEHDKTL YRIPEPQPKLPKPPEDI
VRSNHYPDEEYRQQLSYFDRRSFENKPPAHIAASHLSEPAKPAHSQNQSNFSSYSKGPPEADGV
DRSFGKEKRYEQIATPPPPPLPSQYAQPSQPVTSASLHIHSGKAHGEGNSVSLDFQNSL VSKPDPSPSQN
KPATFRPPNREDTAQAAYFPQKSFDPKAPVNGTEQTQKTVTPAYNRFTPKPYTSSARPFERKFESPKFNH
NLLPSETAHKPDLSKKTPTSPKTLVKSHSLAQPEFD SGVETFSIHAEKPKYQINNI STVPKAIQVSPSA
VEEDEDGHTVVATARGIFNSNGGLVSSIETGVSIIIPQGA IPEGVEQEIYFKVCRDNSILPLDKEKG
ETLLSPLVMCGPHGLKFLKPVELRLPHCDPKTWQNKCLPGDPNYLVGANCVSVLIDHF

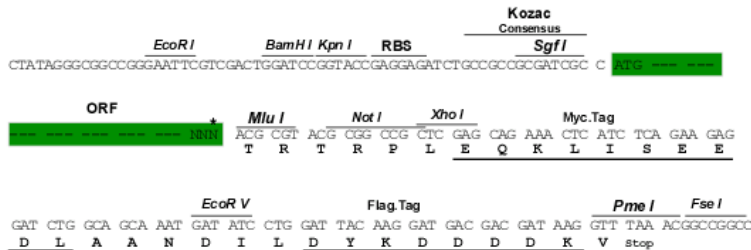
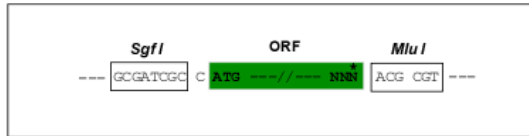
TRTRPLEQKLISEEDLAANDILDYKDDDDKV

Restriction Sites:

Sgfl-MluI

Cloning Scheme:

Cloning sites used for ORF Shuttling:

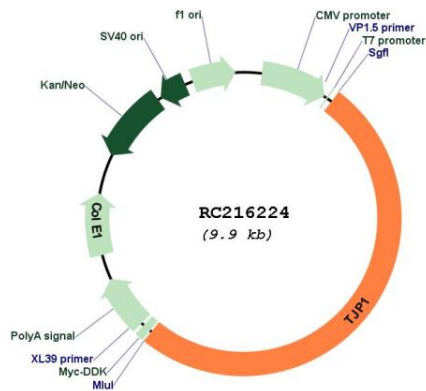


* The last codon before the Stop codon of the ORF

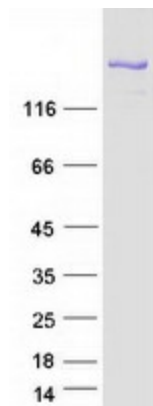
ACCN:	NM_175610
ORF Size:	5004 bp
OTI Disclaimer:	<p>Due to the inherent nature of this plasmid, standard methods to replicate additional amounts of DNA in E. coli are highly likely to result in mutations and/or rearrangements. Therefore, OriGene does not guarantee the capability to replicate this plasmid DNA. Additional amounts of DNA can be purchased from OriGene with batch-specific, full-sequence verification at a reduced cost. Please contact our customer care team at custsupport@origene.com or by calling 301.340.3188 option 3 for pricing and delivery.</p> <p>The molecular sequence of this clone aligns with the gene accession number as a point of reference only. However, individual transcript sequences of the same gene can differ through naturally occurring variations (e.g. polymorphisms), each with its own valid existence. This clone is substantially in agreement with the reference, but a complete review of all prevailing variants is recommended prior to use. More info</p>
OTI Annotation:	This clone was engineered to express the complete ORF with an expression tag. Expression varies depending on the nature of the gene.
Components:	The ORF clone is ion-exchange column purified and shipped in a 2D barcoded Matrix tube containing 10ug of transfection-ready, dried plasmid DNA (reconstitute with 100 ul of water).
Reconstitution Method:	<ol style="list-style-type: none"> 1. Centrifuge at 5,000xg for 5min. 2. Carefully open the tube and add 100ul of sterile water to dissolve the DNA. 3. Close the tube and incubate for 10 minutes at room temperature. 4. Briefly vortex the tube and then do a quick spin (less than 5000xg) to concentrate the liquid at the bottom. 5. Store the suspended plasmid at -20°C. The DNA is stable for at least one year from date of shipping when stored at -20°C.
RefSeq:	NM_175610.4
RefSeq Size:	6925 bp
RefSeq ORF:	5007 bp
Locus ID:	7082
UniProt ID:	Q07157
Cytogenetics:	15q13.1
Protein Families:	Druggable Genome
Protein Pathways:	Adherens junction, Epithelial cell signaling in Helicobacter pylori infection, Gap junction, Tight junction, Vibrio cholerae infection
MW:	187 kDa

Gene Summary:

This gene encodes a member of the membrane-associated guanylate kinase (MAGUK) family of proteins, and acts as a tight junction adaptor protein that also regulates adherens junctions. Tight junctions regulate the movement of ions and macromolecules between endothelial and epithelial cells. The multidomain structure of this scaffold protein, including a postsynaptic density 95/disc-large/zona occludens (PDZ) domain, a Src homology (SH3) domain, a guanylate kinase (GuK) domain and unique (U) motifs all help to co-ordinate binding of transmembrane proteins, cytosolic proteins, and F-actin, which are required for tight junction function. Alternative splicing results in multiple transcript variants encoding different isoforms. [provided by RefSeq, Aug 2017]

Product images:


Circular map for RC216224



Coomassie blue staining of purified TJP1 protein (Cat# [TP316224]). The protein was produced from HEK293T cells transfected with TJP1 cDNA clone (Cat# RC216224) using MegaTran 2.0 (Cat# [TT210002]).