

Product datasheet for RC216218

WDR5 (NM_017588) Human Tagged ORF Clone

Product data:

Product Type:	Expression Plasmids
Product Name:	WDR5 (NM_017588) Human Tagged ORF Clone
Tag:	Myc-DDK
Symbol:	WDR5
Synonyms:	BIG-3; CFAP89; SWD3
Mammalian Cell Selection:	Neomycin
Vector:	pCMV6-Entry (PS100001)
E. coli Selection:	Kanamycin (25 ug/mL)
ORF Nucleotide Sequence:	>RC216218 representing NM_017588 Red=Cloning site Blue=ORF Green=Tags(s)

TTTTGTAATACGACTCACTATAGGGCGGCCGGAATTCGTCGACTGGATCCGGTACCGAGGAGATCTGCC
GCC**CGATCGCC**

ATGGCGACGGAGGAGAAGAAGCCTGAGACCGAGGCCGCCAGAGCACAGCCAACCCCTTCGTCATCCGCCA
CTCAGAGCAAGCCTACACCTGTGAAGCCAAACTATGCTCTAAAGTTCACCCTTGTGGCCACACCAAAGC
AGTGTCTCCGTGAAATTCAGCCGAATGGAGAGTGGCTGGCAAGTTCATCTGCTGATAAACTTATTTAA
ATTTGGGCGCGTATGATGGAAATTTGAGAAAACCATATCTGGTCACAAGCTGGGAATATCCGATGTAG
CCTGGTCGTGAGATTCTAACCTTCTGTTTCTGCCTCAGATGACAAAACCTTGAAGATATGGACGTGAG
CTCGGGCAAGTGTCTGAAAACCCGAAAGGACACAGTAATTATGTCTTTTGTGCAACTTCAATCCCCAG
TCCAACCTTATTGCTCAGGATCCTTTGACGAAAGCGTGAGGATATGGGATGTGAAAACAGGGAAGTGCC
TCAAGACTTTGCCAGCTCACTCGGATCCAGTCTCGGCCGTTCAATTTAATCGTGATGGATCCTTGATAGT
TTCAAGTAGCTATGATGGTCTCTGTGCGATCTGGGACACCGCCTCAGGCCAGTGCCTGAAGACGCTCATC
GATGACGACAACCCCGGTGTCTTTGTGAAGTTCTCCCGAACGGCAAATACATCCTGGCCGCCACGC
TGGACAACACTCTGAAGCTCTGGGACTACAGCAAGGGGAAGTGCCTGAAGACGTACACTGGCCACAAGAA
TGAGAAACTGTCATTTGCCAATTTCTGTTACTGGTGGGAAGTGGATTGTGTCTGGCTCAGAGGAT
AACCTTGTTCATCTGGAACCTTCAGACGAAAGAGATTGTACAGAACTACAAGGCCACACAGATGTCG
TGATCTCAACAGCTTGTACCCCAACAGAAAACATCATCGCCTCTGCTGCGCTAGAAAATGACAAAACAAT
TAAACTGTGGAAGAGTGACTGC

ACGCGTACGCGGCCGCTCGAGCAGAAACTCATCTCAGAAGAGGATCTGGCAGCAAATGATATCCTGGATT
ACAAGGATGACGACGATAAGGTTTAA



[View online »](#)

Protein Sequence: >RC216218 representing NM_017588
Red=Cloning site Green=Tags(s)

MATEEKKPETEAARAQPTPSSSATQSKPTPVKPNYALKFTLAGHTKAVSSVKFSPNGEWLASSADKLIK
 IWGAYDGKFEKTSI SGHKLGISDVAWSSDNLVVSASDDKTLKIWDVSSGKCLKTLKGHSNYVFCCNFNPQ
 SNLIVSGSFDSESVRIWDVKTGKCLKTLP AHSDPVSAVHFNRDGLIVSSSYDGLCRIWDTASGQCLKTLI
 DDDNPPVSFVKFSPNGKYILAATLDNTLKLWDYSK GKCLKTYTGHKNEKYCIFANF SVTGGKWIVSGSED
 NLVYIWNLQTK EIVQKLQGH TDVVI STACHPTENIIASAALENDKTIKLWKS DC

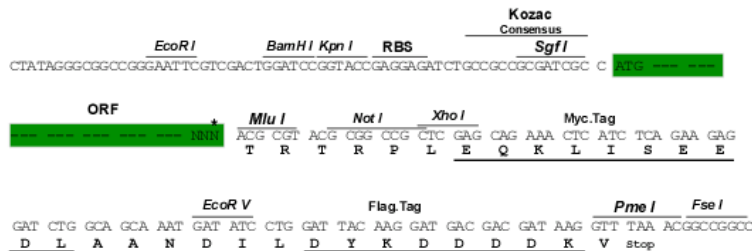
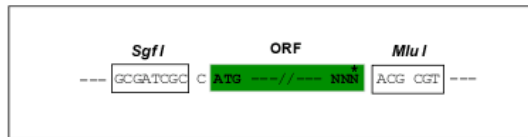
TRTRPLEQKLISEEDLAANDILDYKDDDDKV

Chromatograms: https://cdn.origene.com/chromatograms/mk6110_a10.zip

Restriction Sites: SgfI-MluI

Cloning Scheme:

Cloning sites used for ORF Shuttling:



* The last codon before the Stop codon of the ORF

ACCN: NM_017588

ORF Size: 1002 bp

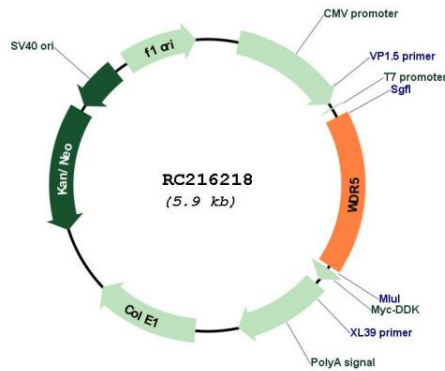
OTI Disclaimer: The molecular sequence of this clone aligns with the gene accession number as a point of reference only. However, individual transcript sequences of the same gene can differ through naturally occurring variations (e.g. polymorphisms), each with its own valid existence. This clone is substantially in agreement with the reference, but a complete review of all prevailing variants is recommended prior to use. [More info](#)

OTI Annotation: This clone was engineered to express the complete ORF with an expression tag. Expression varies depending on the nature of the gene.

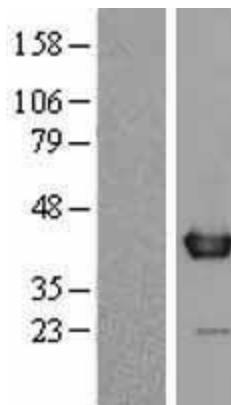
Components: The ORF clone is ion-exchange column purified and shipped in a 2D barcoded Matrix tube containing 10ug of transfection-ready, dried plasmid DNA (reconstitute with 100 ul of water).

Reconstitution Method:	<ol style="list-style-type: none">1. Centrifuge at 5,000xg for 5min.2. Carefully open the tube and add 100ul of sterile water to dissolve the DNA.3. Close the tube and incubate for 10 minutes at room temperature.4. Briefly vortex the tube and then do a quick spin (less than 5000xg) to concentrate the liquid at the bottom.5. Store the suspended plasmid at -20°C. The DNA is stable for at least one year from date of shipping when stored at -20°C.
Note:	Plasmids are not sterile. For experiments where strict sterility is required, filtration with 0.22um filter is required.
RefSeq:	NM_017588.3
RefSeq Size:	3163 bp
RefSeq ORF:	1005 bp
Locus ID:	11091
UniProt ID:	P61964
Cytogenetics:	9q34.2
Domains:	WD40
Protein Families:	Druggable Genome
MW:	36.4 kDa
Gene Summary:	<p>This gene encodes a member of the WD repeat protein family. WD repeats are minimally conserved regions of approximately 40 amino acids typically bracketed by gly-his and trp-asp (GH-WD), which may facilitate formation of heterotrimeric or multiprotein complexes. Members of this family are involved in a variety of cellular processes, including cell cycle progression, signal transduction, apoptosis, and gene regulation. This protein contains 7 WD repeats. Alternatively spliced transcript variants encoding the same protein have been identified. [provided by RefSeq, Jul 2008]</p>

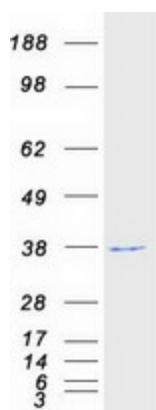
Product images:



Circular map for RC216218



Western blot validation of overexpression lysate (Cat# [LY402599]) using anti-DDK antibody (Cat# [TA50011-100]). Left: Cell lysates from untransfected HEK293T cells; Right: Cell lysates from HEK293T cells transfected with RC216218 using transfection reagent MegaTran 2.0 (Cat# [TT210002]).



Coomassie blue staining of purified WDR5 protein (Cat# [TP316218]). The protein was produced from HEK293T cells transfected with WDR5 cDNA clone (Cat# RC216218) using MegaTran 2.0 (Cat# [TT210002]).