

Product datasheet for **RC216194**

TUBAL3 (NM_024803) Human Tagged ORF Clone

Product data:

Product Type:	Expression Plasmids
Product Name:	TUBAL3 (NM_024803) Human Tagged ORF Clone
Tag:	Myc-DDK
Symbol:	TUBAL3
Mammalian Cell Selection:	Neomycin
Vector:	pCMV6-Entry (PS100001)
E. coli Selection:	Kanamycin (25 ug/mL)



[View online »](#)

ORF Nucleotide Sequence:

>RC216194 ORF sequence
 Red=Cloning site Blue=ORF Green=Tags(s)

TTTTGTAATACGACTCACTATAGGGCGGCCGGAATTCGTCGACTGGATCCGGTACCGAGGAGATCTGCC
 GCC**CGGATCGCC**

ATGAGGGAGTGCCTTTCCATCCACATCGGTCAAGCTGGCATCCAGATTGGGGACGCTGCTGGAACTCT
 ATTGCCTGGAACATGGAATCCAGCCAAATGGCGTTGTTCTTGACACTCAACAGGATCAGCTGGAAAATGC
 AAAAATGGAGCACACAAATGCATCTTCGATACCTTCTCTGTGAGACAAGAGCTGGGAAGCATGTGCCT
 AGAGCACTCTTCGTGGACTTGGAGCCAAGTGTATAGATGGGATCCGGACGGGCCAGCACCGTTCCTCT
 TCCACCCCGAGCAGCTCCTTAGCGGAAAGGAGGATGCTGCCAACAATTACGCGGAGGCCGTTACTCTGT
 GGGGTCCGAGGTCATCGACCTTGTGCTGGAGAGGACCCGGAAGCTGGCAGAACAGTGTGGTGGACTTCAG
 GGATTTTTGATTTCCGAAGCTTTGGAGGAGGCACTGGTTCAGGGTTTACGTCTCTTAAATGGAGAGGC
 TCACAGGAGAATATAGCAGAAAGACTAAGCTGGAGTTCGGTCTACCCAGCCCCAGGATCTCCACTGC
 CGTGGTAGAGCCTTATAACTCTGCTCCTACCACCACTCCACCACAGAGCACACGGACTGTACCTTCATG
 GTGGACAACGAGGCCGTCTATGATATATGCCATCGTAAACTCGGTGTTGAATGCCCTCTCATGCCAGCA
 TCAATAGATTGGTGGTTCAGGTGGTATCTTCCATCACTGCCTCCCTCCGGTTTGAAGGGCCCTTGAATGT
 AGACCTAATTGAATCCAGACCAACCTGGTACCTTATCCGAGAATACATTTCCCATGACAGCCTTCGCC
 CCCATCGTCTCTGCTGACAAAGCCTACCATGAGCAGTTCTCTGTGTCAGACATCACCCTGCTTGCCTTG
 AGTCTCCAACAGCTGGTCAAGTGTGATCCTCGGCTTGGGAAGTACATGGCCTGCTGCCTACTCTATAG
 AGGGGATGTGGTCCCAAGGAAGTGAATGCAGCAATCGCAGCCACGAAGTCGAGGCACTGTTCAGTTT
 GTAGATTGGTGTCCAAGTGGTTCAAGGTGGGCATCAACAATCGGCCGCCACGGTGTGGAGGCCTGGGCCG
 ACCTGGCCAAAGTCCACCGTCCATCTGCATGCTGAGCAACACCACGGCGATTGTGGAGGCCTGGGCCG
 CCTGGACCACAAGTTTGACCTCATGTACGCCAAGAGAGCATTCTGCACTGGTACCTCAGAGAAGGCATG
 GAAGAAGCAGAGTTCTTGAGGCCAGGGAAGATCTGGCAGCCCTGGAGAGGGACTATGAGGAAGTGGCGC
 AAAGTTTC

ACGCGTACGCGGCCGCTCGAGCAGAACTCATCTCAGAAGAGGATCTGGCAGCAATGATATCCTGGATT
 ACAAGGATGACGACGATAAGGTTTAA

Protein Sequence:

>RC216194 protein sequence
 Red=Cloning site Green=Tags(s)

MRECLSIHIGQAGIQIGDACWEL YCLEHGIQPNGVVLDTQQDQLENKMEHTNASFDTFFCETRAGKHVP
 RALFVDLEPTVIDGIRTGQHRSLFHPEQLL SGKEDAANNYARGRYSVSGSEVIDL VLERTRKLAEQCGGLQ
 GFLIFRSFGGGTSGSFTSLLMERLTGEYSRKTLEFSVYPAPRISTAVVEPYNSVL TTHSTTEHTDCTFM
 VDNEAVYDICHKRLGVECPSHASINRL VVQVSSITASLRFEGPLNVDL IEFQTNLVPYPRIHFPMTAFA
 PIVSADKAYHEQFSVSDITTACFESSNQLVKCDPRLGKYMACL LYRGDVVPKEVNAAIAATKSRHSVQF
 VDWCPTGFKVGINNRPPTVMPGGDLAKVHRICMLSNNTTAIVEAWARLDHKFDL MYAKRAFLHWYLREGM
 EEAFLAERDLAALERDYEEVAQSF

TRTRPLEQKLISEEDLAANDILDYKDDDDKV

Chromatograms:

https://cdn.origene.com/chromatograms/mk6450_e07.zip

Restriction Sites:

Sgfl-Mlul

Cloning Scheme:


ACCN: NM_024803

ORF Size: 1338 bp

OTI Disclaimer: The molecular sequence of this clone aligns with the gene accession number as a point of reference only. However, individual transcript sequences of the same gene can differ through naturally occurring variations (e.g. polymorphisms), each with its own valid existence. This clone is substantially in agreement with the reference, but a complete review of all prevailing variants is recommended prior to use. [More info](#)

OTI Annotation: This clone was engineered to express the complete ORF with an expression tag. Expression varies depending on the nature of the gene.

Components: The ORF clone is ion-exchange column purified and shipped in a 2D barcoded Matrix tube containing 10ug of transfection-ready, dried plasmid DNA (reconstitute with 100 ul of water).

Reconstitution Method:

1. Centrifuge at 5,000xg for 5min.
2. Carefully open the tube and add 100ul of sterile water to dissolve the DNA.
3. Close the tube and incubate for 10 minutes at room temperature.
4. Briefly vortex the tube and then do a quick spin (less than 5000xg) to concentrate the liquid at the bottom.
5. Store the suspended plasmid at -20°C. The DNA is stable for at least one year from date of shipping when stored at -20°C.

Note: Plasmids are not sterile. For experiments where strict sterility is required, filtration with 0.22um filter is required.

RefSeq: [NM_024803.1](#), [NP_079079.1](#)

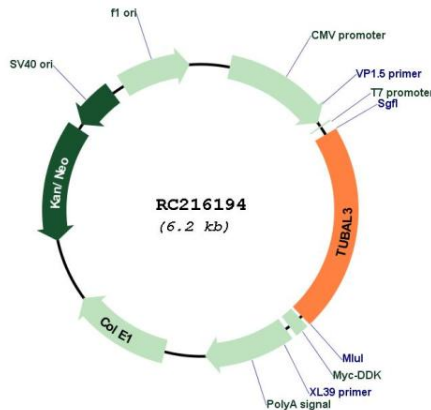
RefSeq Size: 1815 bp

RefSeq ORF: 1341 bp

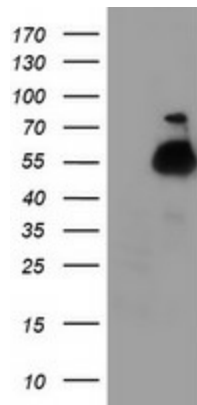
Locus ID: 79861

UniProt ID: [A6NHL2](#)
Cytogenetics: 10p15.1
Protein Families: Druggable Genome
Protein Pathways: Gap junction, Pathogenic Escherichia coli infection
MW: 49.9 kDa
Gene Summary: Tubulin is the major constituent of microtubules. It binds two moles of GTP, one at an exchangeable site on the beta chain and one at a non-exchangeable site on the alpha chain (By similarity).[UniProtKB/Swiss-Prot Function]

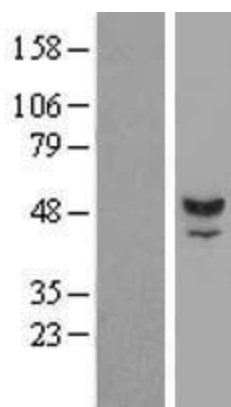
Product images:



Circular map for RC216194



HEK293T cells were transfected with the pCMV6-ENTRY control (Cat# [PS100001], Left lane) or pCMV6-ENTRY TUBAL3 (Cat# RC216194, Right lane) cDNA for 48 hrs and lysed. Equivalent amounts of cell lysates (5 ug per lane) were separated by SDS-PAGE and immunoblotted with anti-TUBAL3(Cat# [TA503907]). Positive lysates [LY411058] (100ug) and [LC411058] (20ug) can be purchased separately from OriGene.



Western blot validation of overexpression lysate (Cat# [LY411058]) using anti-DDK antibody (Cat# [TA50011-100]). Left: Cell lysates from untransfected HEK293T cells; Right: Cell lysates from HEK293T cells transfected with RC216194 using transfection reagent MegaTran 2.0 (Cat# [TT210002]).