

## Product datasheet for **RC216190**

### **BICDL1 (NM\_207311) Human Tagged ORF Clone**

#### **Product data:**

Product Type:	Expression Plasmids
Product Name:	BICDL1 (NM_207311) Human Tagged ORF Clone
Tag:	Myc-DDK
Symbol:	BICDL1
Synonyms:	BICDR-1; BICDR1; CCDC64; CCDC64A; H_267D11.1
Mammalian Cell Selection:	Neomycin
Vector:	pCMV6-Entry (PS100001)
E. coli Selection:	Kanamycin (25 ug/mL)



[View online »](#)

**ORF Nucleotide Sequence:**

>RC216190 representing NM\_207311  
 Red=Cloning site Blue=ORF Green=Tags(s)

TTTTGTAATACGACTCACTATAGGGCGGCCGGAATTCGTCGACTGGATCCGGTACCGAGGAGATCTGCC  
 GCC**GCGATCGCC**

ATGTCGCTTTCTGCCTGGGCTTGGTCGGCCGCGCTTACGACCCGCCGAGCCGGACAGCGCCTGTGCA  
 TGGAGCTGCCCGCGCGCCGGGACGAGTCCGGAGTCCCGCCGCCGCCGCCCTCATCTTCCCGG  
 GGGCTCCGGGGAGCTAGAACTGGCGTTAGAGGAGGAGCTGGCGTCTGGCGGCCGGGGAGCGCCGTCC  
 GACCCCGGGAAACACCCTCAGGCCGAGCCTGGGTCTCTGGCCGAGGGGGCCGACCCGAGCCGCCCT  
 CCCAGGACCCCGAGTGTGTGGTGTCCGACAGAAGGAGAAGGATCTGGTGTGGCGGCCCGGTGGG  
 TAAGGCGTGTCTGAGAGGAACAGGACATGAGCCGCGAGTACGAGCAGATGCATAAGGAGCTGACAGAC  
 AAGCTCGAGCACTTAGAGCAAGAGAAACATGAATTGAGAAGACGATTTGAGAACCAGAGGGGAGTGGG  
 AAGCCGAGTGTGAGAGTGGAGTGTGTAAGCAGCTACAGGATGAGTTGGAGAGCCAGCAGATTCA  
 TCTGCGGAAGCAGATCGAGAAAATCACGGGCTGTCCAGAACTGTCGGAACAGAACCAAGGCTATTG  
 GATCAGCTCAGCAGGGCATCAGAAGTTGAGAGACAACCTCCATGCAGGTCCACGCCCTCAGAGAAGACT  
 TTCGGGAGAAAACTCATCAACCAACAGCACATTATCCGGCTGGAGAGCCTTCAGGCCGAGATCAAGT  
 GCTGTGAGATCGGAAACGGGAGCTGGAGCATCGTCTCAGCGCTACTTTAGAGGAAAATGACCTGCTCAA  
 GGGACCGTGGAGGAGCTACAGGACCGGGTCTAATCCTGGAGAGGCAGGGCCATGACAAGGACCTACAGC  
 TGCACCAAGCCAGCTGGAGCTTACAGGAGTGCCTCTCTCTGCCGACAGCTGCAGGTGAAGGTGGAAGA  
 ACTCACTGAGGAGAGGAGTCTGCAGAGCTTCCGCCACCAGCACATCCCTCCTGCAGAGATCGAGCAG  
 AGCATGGAGGCTGAGGAGCTGGAGCAGGAGCGAGAGCAGCTGAGACTGCAGCTTGGGAAGCCTACTGCC  
 AGTTTCGCTATCTGTGCTCACACCTTCGAGGCAATGACAGTGTGACTCAGCCGTCTCCAGGACTCCTC  
 CATGGACGAGTCTCAGAAACCTCGTCCGCCAAGGATGTGCCAGCCGCGAGCTTGGCAGCTGCCCTCAAT  
 GAGCTCAAGAGACTGATACAGAGCATTGTGGATGGCATGGAGCCACGGTGACACTGCTGAGTGTGAGA  
 TGACTGCCCTAAAAGAGGAGAGAGACCGACTCAGAGTCACTTCTGAGGACAAGGAGCCAAAGGAGCAGCT  
 TCAGAAGGCCATCAGGGACCGGACGAGGCCATTGCAAAGAAGAATGCTGTGGAGCTGGAAGTTCGCAAG  
 TGCAGGATGGATATGATGTCTGAACAGCCAGTTGCTGGATGCCATTACAGCAGAACTGAACCTCTCGC  
 AGCAGCTGGAAGCTTGGCAGGATGACATGCACAGGGTATTGACCGCAGCTGATGGACACGCACCTGAA  
 AGAACGGAGCCAGCCGGTCTGCCCTCTGCAGGGCCACAGCGCTGGCGGGGGATGAGCCAGCATC  
 GCTGAAGGCAAACGACTTCTCATTCTCAGGAAAAT

**ACGCGT**ACGCGGCCGCTCGAGCAGAACTCATCTCAGAAGAGGATCTGGCAGCAAATGATATCCTGGATT  
 ACAAGGATGACGACGATAAGGTTTAA

**Protein Sequence:**

>RC216190 representing NM\_207311  
 Red=Cloning site Green=Tags(s)

MSAFCLGLVGRASAPAEPSACCMEIPAAAGDAVRSPAAAAALIFPGSGELELALAEELALLAAGERPS  
 DPGEHPQAEPGSLAEGAGPQPPPSQDPELLSVIRQKEKDLVLAARLGKALLERNQDMSRQYEQMHKELTD  
 KLEHLEQEKHELRRRFENREGEWEGRVSELESDVKQLQDELERQQIHLREADREKSRVQELSEQNQRL  
 DQLSRASEVERQLSMQVHALREDFREKNSSTNQHIIRLESQAEIKMLSDRKRELEHRLSATLEENDLLQ  
 GTVEELQDRVILERQGHDKDLQLHQSLELQEVRLSCRQLQVKVEELTEERSLQSSAATSTSLLEIEQ  
 SMEAELEQEREQLRLQLWEAYCQVRYLCSHLRGNDSADSAVSTDSSMDESSETSSAKDVPAGSLRTALN  
 ELKRLIQSIVDGMEPTVTLVSVEMTALKEERDRLRVTSEDKEPKEQLQKAIRDREAIKKNAVELELAK  
 CRMDMMSLNSQLLDAIQKLNLSQQLQLEAWQDDMHRVIDRQLMDTHLKERSQPAAALCRGHSAGRGDEPSI  
 AEGKRLFSFRKI

**TR**TRPLEQKLISEEDLAANDILDYKDDDDKV

**Chromatograms:**

[https://cdn.origene.com/chromatograms/mk8017\\_d10.zip](https://cdn.origene.com/chromatograms/mk8017_d10.zip)

**Restriction Sites:**

Sgfl-Mlul

**Cloning Scheme:**


**ACCN:** NM\_207311

**ORF Size:** 1719 bp

**OTI Disclaimer:** The molecular sequence of this clone aligns with the gene accession number as a point of reference only. However, individual transcript sequences of the same gene can differ through naturally occurring variations (e.g. polymorphisms), each with its own valid existence. This clone is substantially in agreement with the reference, but a complete review of all prevailing variants is recommended prior to use. [More info](#)

**OTI Annotation:** This clone was engineered to express the complete ORF with an expression tag. Expression varies depending on the nature of the gene.

**Components:** The ORF clone is ion-exchange column purified and shipped in a 2D barcoded Matrix tube containing 10ug of transfection-ready, dried plasmid DNA (reconstitute with 100 ul of water).

- Reconstitution Method:**
1. Centrifuge at 5,000xg for 5min.
  2. Carefully open the tube and add 100ul of sterile water to dissolve the DNA.
  3. Close the tube and incubate for 10 minutes at room temperature.
  4. Briefly vortex the tube and then do a quick spin (less than 5000xg) to concentrate the liquid at the bottom.
  5. Store the suspended plasmid at -20°C. The DNA is stable for at least one year from date of shipping when stored at -20°C.

**Note:** Plasmids are not sterile. For experiments where strict sterility is required, filtration with 0.22um filter is required.

**RefSeq:** [NM\\_207311.2](#), [NP\\_997194.2](#)

**RefSeq Size:** 3081 bp

**RefSeq ORF:** 1722 bp

**Locus ID:** 92558

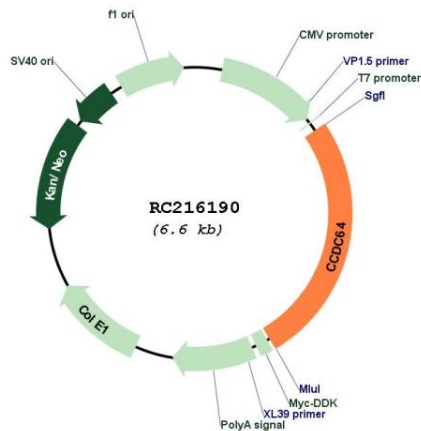
UniProt ID: [Q6ZP65](#)

Cytogenetics: 12q24.23

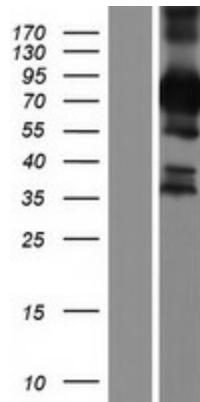
MW: 64.7 kDa

**Gene Summary:** Component of secretory vesicle machinery in developing neurons that acts as a regulator of neurite outgrowth. Regulates the secretory vesicle transport by controlling the accumulation of Rab6-containing secretory vesicles in the pericentrosomal region restricting anterograde secretory transport during the early phase of neuronal differentiation, thereby inhibiting neuritogenesis (By similarity).[UniProtKB/Swiss-Prot Function]

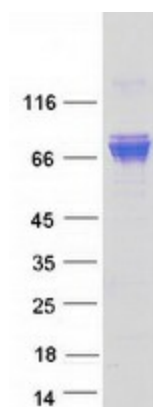
**Product images:**



Circular map for RC216190



Western blot validation of overexpression lysate (Cat# [LY404090]) using anti-DDK antibody (Cat# [TA50011-100]). Left: Cell lysates from untransfected HEK293T cells; Right: Cell lysates from HEK293T cells transfected with RC216190 using transfection reagent MegaTran 2.0 (Cat# [TT210002]).



Coomassie blue staining of purified BICDL1 protein (Cat# [TP316190]). The protein was produced from HEK293T cells transfected with BICDL1 cDNA clone (Cat# RC216190) using MegaTran 2.0 (Cat# [TT210002]).