

## Product datasheet for RC216169

### NPVF (NM\_022150) Human Tagged ORF Clone

#### Product data:

**Product Type:** Expression Plasmids  
**Product Name:** NPVF (NM\_022150) Human Tagged ORF Clone  
**Tag:** Myc-DDK  
**Symbol:** NPVF  
**Synonyms:** C7orf9; RFRP  
**Mammalian Cell Selection:** Neomycin  
**Vector:** pCMV6-Entry (PS100001)  
**E. coli Selection:** Kanamycin (25 ug/mL)  
**ORF Nucleotide Sequence:** >RC216169 representing NM\_022150  
 Red=Cloning site Blue=ORF Green=Tags(s)

TTTTGTAATACGACTCACTATAGGGCGGCCGGAATTCGTCGACTGGATCCGGTACCGAGGAGATCTGCC  
 GCC**CGATCGCC**

ATGGAAATTATTTTCATCAAACTATTCATTTTATTGACTTTAGCCACTTCAAGCTTGTTAACATCAAACA  
 TTTTTTGTGCAGATGAATTAGTGATGTCCAATCTCACAGCAAAGAAAATATGACAAATATTCTGAGCC  
 TAGAGGATACCCAAAAGGGGAAAGAAGCCTCAATTTTGAGGAATAAAAGATTGGGGACCAAAAAATGTT  
 ATTAAGATGAGTACACCTGCAGTCAATAAAATGCCACACTCCTTCGCCAACTTGCCATTGAGATTTGGGA  
 GGAACGTTCAAGAAGAAAGAAGTCTGGAGCAACAGCCAACCTGCCCTGAGATCTGGAAGAAATATGGA  
 GGTGAGCCTCGTGAGACGTGTTCCCTAACCTGCCYCAAAGTTTGGGAGAACAACAACAGCCAAAAGTGTC  
 TGCAGGATGCTGAGTGATTTGTGTCAAGGATCCATGCATTACCATGTGCCAATGACTTATTTACTCCA  
 TGACCTGCCAGCACCAAGAAATCCAGAATCCCGATCAAAAACAGTCAAGGAGACTGCTATTCAAGAAAAAT  
 AGATGATGCAGAATTGAAACAAGAAAAA

**ACGCGT**ACGCGGCCGCTCGAGCAGAACTCATCTCAGAAGAGGATCTGGCAGCAATGATATCCTGGATT  
 ACAAGGATGACGACGATAAGGTTTAA

**Protein Sequence:** >RC216169 representing NM\_022150  
 Red=Cloning site Green=Tags(s)

MEIISKLFILLTLATSSLLTSNIFCADELVMSNLHSKENYDKYSEPRGYPKGERSLNFEELEKDWGPKNV  
 IKMSTPAVNKMPHSFANLPLRFGRNVQEERSAGATANLPLRSGRNMEVSLVRRVPLXQRFGRTTTAKSV  
 CRMLSDLQCQSMHSPCANDLFYSMTCQHQEIQNPQKQSRRLLFKKIDDAELKQEK

**TRTRPLEQKLISEEDLAANDILDYKDDDDKV**



[View online »](#)

Chromatograms: [https://cdn.origene.com/chromatograms/mk8010\\_g04.zip](https://cdn.origene.com/chromatograms/mk8010_g04.zip)

Restriction Sites: SgfI-MluI

Cloning Scheme:



ACCN: NM\_022150

ORF Size: 588 bp

OTI Disclaimer: The molecular sequence of this clone aligns with the gene accession number as a point of reference only. However, individual transcript sequences of the same gene can differ through naturally occurring variations (e.g. polymorphisms), each with its own valid existence. This clone is substantially in agreement with the reference, but a complete review of all prevailing variants is recommended prior to use. [More info](#)

OTI Annotation: This clone was engineered to express the complete ORF with an expression tag. Expression varies depending on the nature of the gene.

Components: The ORF clone is ion-exchange column purified and shipped in a 2D barcoded Matrix tube containing 10ug of transfection-ready, dried plasmid DNA (reconstitute with 100 ul of water).

Reconstitution Method:

1. Centrifuge at 5,000xg for 5min.
2. Carefully open the tube and add 100ul of sterile water to dissolve the DNA.
3. Close the tube and incubate for 10 minutes at room temperature.
4. Briefly vortex the tube and then do a quick spin (less than 5000xg) to concentrate the liquid at the bottom.
5. Store the suspended plasmid at -20°C. The DNA is stable for at least one year from date of shipping when stored at -20°C.

RefSeq: [NM\\_022150.3](#), [NP\\_071433.3](#)

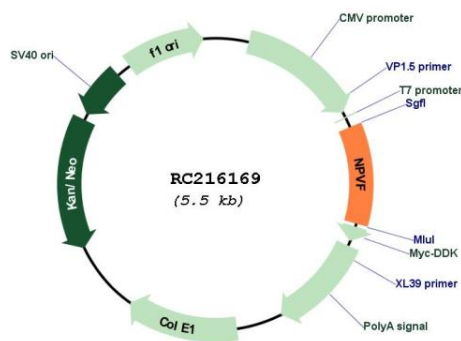
RefSeq Size: 1190 bp

RefSeq ORF: 591 bp

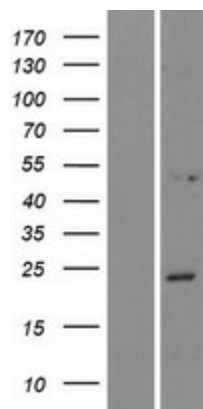
Locus ID: 64111

UniProt ID: [Q9HCQ7](#)  
 Cytogenetics: 7p15.3  
 Protein Families: Druggable Genome, Secreted Protein  
 MW: 22.3 kDa  
 Gene Summary: Neuropeptide RFRP-1 acts as a potent negative regulator of gonadotropin synthesis and secretion. Neuropeptides NPSF and NPVF efficiently inhibit forskolin-induced production of cAMP, but RFRP-2 shows no inhibitory activity. Neuropeptide RFRP-1 induces secretion of prolactin in rats. Neuropeptide NPVF blocks morphine-induced analgesia.[UniProtKB/Swiss-Prot Function]

**Product images:**



Circular map for RC216169



Western blot validation of overexpression lysate (Cat# [LY411738]) using anti-DDK antibody (Cat# [TA50011-100]). Left: Cell lysates from untransfected HEK293T cells; Right: Cell lysates from HEK293T cells transfected with RC216169 using transfection reagent MegaTran 2.0 (Cat# [TT210002]).