

## Product datasheet for **RC216151**

### Von Hippel Lindau (VHL) (NM\_000551) Human Tagged ORF Clone

#### Product data:

Product Type:	Expression Plasmids
Product Name:	Von Hippel Lindau (VHL) (NM_000551) Human Tagged ORF Clone
Tag:	Myc-DDK
Symbol:	Von Hippel Lindau
Synonyms:	HRCA1; pVHL; RCA1; VHL1
Mammalian Cell Selection:	Neomycin
Vector:	pCMV6-Entry (PS100001)
E. coli Selection:	Kanamycin (25 ug/mL)
ORF Nucleotide Sequence:	>RC216151 representing NM_000551 Red=Cloning site Blue=ORF Green=Tags(s)

TTTTGTAATACGACTCACTATAGGGCGGCCGGAATTCGTCGACTGGATCCGGTACCGAGGAGATCTGCC  
GCC**CGATCGCC**

ATGCCCGGAGGGCGGAGAACTGGGACGAGGCCGAGGTAGGCGCGGAGGAGGCAGGCGTCGAAGAGTACG  
GCCCTGAAGAAGACGGCGGGGAGGAGTCGGGCGCCGAGGAGTCCGGCCCGAAGAGTCCGGCCCGGAGGA  
ACTGGGCGCCGAGGAGGAGATGGAGGCCGGCGCGCCGCGCCGTGCTGCGCTCGGTGAACCTCGCGCGAG  
CCCTCCAGGTCATCTTCTGCAATCGCAGTCCGCGGTCGTGCTGCCGTATGGCTCAACTTCGACGGCG  
AGCCGCAGCCCTACCCAACGCTGCCCTGGCACGGGCCCGCATCCACAGCTACCGAGGTCACCTTTG  
GCTCTTCAGAGATGCAGGACACACGATGGGCTTCTGGTTAACCAAATGAATTATTTGTGCCATCTCTC  
AATGTTGACGGACAGCCTATTTTGCCTATACACTGCCAGTGTATACTCTGAAAGAGCGATGCCTCC  
AGGTTGTCGGGAGCCTAGTCAAGCCTGAGAATTACAGGAGACTGGACATCGTCAGGTCGCTCTACGAAGA  
TCTGGAAGACCACCAAATGTGCAGAAAGACCTGGAGCGGCTGACACAGGAGCGCATTGCACATCAACGG  
ATGGGAGAT

**ACGCGT**ACGCGGCCGCTCGAGCAGAACTCATCTCAGAAGAGGATCTGGCAGCAAATGATATCTGGATT  
ACAAGGATGACGACGATAAGGTTTAA

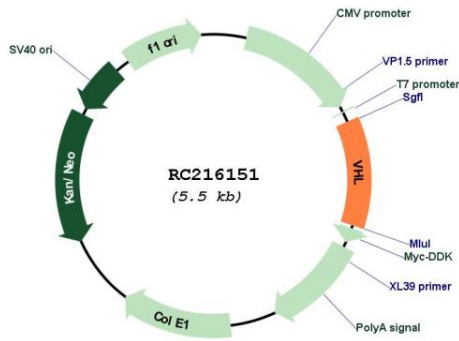


[View online »](#)

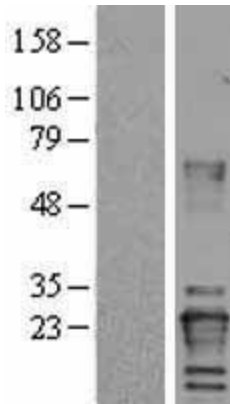


<b>Reconstitution Method:</b>	<ol style="list-style-type: none"><li>1. Centrifuge at 5,000xg for 5min.</li><li>2. Carefully open the tube and add 100ul of sterile water to dissolve the DNA.</li><li>3. Close the tube and incubate for 10 minutes at room temperature.</li><li>4. Briefly vortex the tube and then do a quick spin (less than 5000xg) to concentrate the liquid at the bottom.</li><li>5. Store the suspended plasmid at -20°C. The DNA is stable for at least one year from date of shipping when stored at -20°C.</li></ol>
<b>Note:</b>	Plasmids are not sterile. For experiments where strict sterility is required, filtration with 0.22um filter is required.
<b>RefSeq:</b>	<a href="#">NM_000551.4</a>
<b>RefSeq Size:</b>	2968 bp
<b>RefSeq ORF:</b>	642 bp
<b>Locus ID:</b>	7428
<b>UniProt ID:</b>	<a href="#">P40337</a>
<b>Cytogenetics:</b>	3p25.3
<b>Domains:</b>	VHL
<b>Protein Families:</b>	Druggable Genome, Transcription Factors
<b>Protein Pathways:</b>	Pathways in cancer, Renal cell carcinoma, Ubiquitin mediated proteolysis
<b>MW:</b>	24 kDa
<b>Gene Summary:</b>	Von Hippel-Lindau syndrome (VHL) is a dominantly inherited familial cancer syndrome predisposing to a variety of malignant and benign tumors. A germline mutation of this gene is the basis of familial inheritance of VHL syndrome. The protein encoded by this gene is a component of the protein complex that includes elongin B, elongin C, and cullin-2, and possesses ubiquitin ligase E3 activity. This protein is involved in the ubiquitination and degradation of hypoxia-inducible-factor (HIF), which is a transcription factor that plays a central role in the regulation of gene expression by oxygen. RNA polymerase II subunit POLR2G/RPB7 is also reported to be a target of this protein. Alternatively spliced transcript variants encoding distinct isoforms have been observed. [provided by RefSeq, Jul 2008]

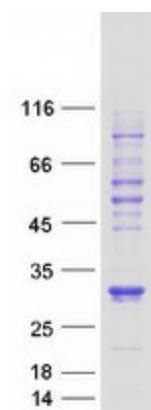
Product images:



Circular map for RC216151



Western blot validation of overexpression lysate (Cat# [LY400188]) using anti-DDK antibody (Cat# [TA50011-100]). Left: Cell lysates from untransfected HEK293T cells; Right: Cell lysates from HEK293T cells transfected with RC216151 using transfection reagent MegaTran 2.0 (Cat# [TT210002]).



Coomassie blue staining of purified VHL protein (Cat# [TP316151]). The protein was produced from HEK293T cells transfected with VHL cDNA clone (Cat# RC216151) using MegaTran 2.0 (Cat# [TT210002]).