

## Product datasheet for **RC216143**

### Miz1 (ZBTB17) (NM\_003443) Human Tagged ORF Clone

#### Product data:

Product Type:	Expression Plasmids
Product Name:	Miz1 (ZBTB17) (NM_003443) Human Tagged ORF Clone
Tag:	Myc-DDK
Symbol:	Miz1
Synonyms:	MIZ-1; pHZ-67; ZNF60; ZNF151
Mammalian Cell Selection:	Neomycin
Vector:	pCMV6-Entry (PS100001)
E. coli Selection:	Kanamycin (25 ug/mL)



[View online »](#)

**ORF Nucleotide Sequence:**

>RC216143 representing NM\_003443  
 Red=Cloning site Blue=ORF Green=Tags(s)

TTTTGTAATACGACTCACTATAGGGCGGCCGGGAATTCGTCGACTGGATCCGGTACCGAGGAGATCTGCC  
 GCC**CGGATCGCC**

ATGGACTTCCCCAGCACAGCCAGCATGTCTTGGAAACAGCTGAACCAGCAGCGGCAGCTGGGGCTTCTCT  
 GTGACTGCACCTTTGTGGTGGACGGTGTCACTTTAAGGCTCATAAAGCAGTGCTGGCGGCTGCAGCGA  
 GTACTTCAAGATGCTCTTCGTGGACCAGAAGGACGTGGTGCACCTGGACATCAGTAACCGCGCAGGCCTG  
 GGGCAGGTGCTGGAGTTTATGTACACGGCCAAGCTGAGCCTGAGCCCTGAGAACGTGGATGATGTCTGG  
 CCGTGGCCACTTCTCCAAATGCAGGACATCATACGGCCTGCCATGCCCTCAAGTCACTTGTGAGCC  
 GGCTACCAGCCCTGGGGAAATGCGGAGGCCTTGGCCACAGAAGGAGGGGACAAGAGAGCCAAAGAGGAG  
 AAGGTGGCCACCAGCACGCTGAGCAGGCTGGAGCAGGCAGGACGCAGCACACCCATAGGCCCCAGCAGGG  
 ACCTCAAGGAGGAGCGCGCGGTGAGGCCAGAGTGCAGGACAGCAGAGAAAAGCCGA  
 TGCCGCCCGGGAGCCGCCCTGTGGAGCTCAAGCCAGACCCACGAGTGGCATGGCTGCTGCAGAAAGCT  
 GAGGCCGCTTTGTCCGAGAGCTCGGAGCAAGAAATGGAGGTGGAGCCCGCCGAAAGGGGAAGAGGAGC  
 AAAAGGAGCAAGAGGAGCAAGAGGAGGAGGGCGCAGGGCCAGCTGAGGTCAAGGAGGAGGGTTCCAGCT  
 GGAGAACGGAGAGGCCCCCGAGGAGAACGAGAATGAGGAGTACGCGGCACAGACTCGGGCAGGAGCTC  
 GGCTCCGAGGCCCGGGCCTGCGCTCAGGCACCTACGGCGACCGCACGGAGTCCAAGGCCTACGGCTCCG  
 TCATCCACAAGTGCAGGACTGTGGGAAGGAGTTCACGCACACGGGGAACCTCAAGCGGCACATCCGCAT  
 CCACACGGGGAGAAGCCCTTCTCGTCCGGGAGTGCAGCAAGGCCTTTCCGACCCGGCCGCTGCAAG  
 GCCCATGAGAAGACGCACAGCCCTTGAAGCCCTACGGCTGCGAGGAGTGCAGGAAAGAGTACCCGCTCA  
 TCAGCTGCTGAACCTGCACAAGAAGCGGCACTCGGGCAGGCGCGCTACCGCTGCGAGGACTCGGCA  
 GCTCTTACCACCTCGGGCAACCTCAAGCGCCACCAGCTGGTGCACAGCGGCGAGAAGCCCTACCGTGC  
 GACTACTGCGGCCGCTCCTTCTCCGACCCACTTCCAAGATGCGCCACCTGGAGACCCACGACACGGACA  
 AGGAGCACAAGTGCCACACTGCGACAAGAAGTTCAACCAGGTAGGGAACCTGAAGGCCACCTGAAGAT  
 CCACATCGCTGACGGGCCCTCAAGTGCCGAGAGTGTGGGAAGCAGTTCACCACCTCAGGGAACCTGAAG  
 CGGCACCTTCGGATCCACAGCGGGGAGAAGCCCTACGTGTGCATCCACTGCCAGCGACAGTTTGCAGACC  
 CCGGGCTCTGCAGCGGCAGTCCGCATTCACACAGGTGAGAAGCCATGCCAGTGTGTGATGTGCGGTAA  
 GGCCTTACCCAGGCCAGTCCCTCATCGCCACGTGCGCCAGCACACCGGGGAGAAGCCCTACGTCTGC  
 GAGCGCTGCGGCAAGAGATTCGTCCAGTCCAGCCAGTTGGCCAATCATATTCGCCACCACGACAACATCC  
 GCCCACACAAGTGACGCGTGTGCAGCAAGGCCTTCGTGAACGTGGGGACCTGTCCAAGCACATCATCAT  
 TCACACTGGAGAGAAGCCTTACCTGTGTGATAAGTGTGGGCGTGGCTTCAACCGGGTAGACAACCTGCGC  
 TCCCACGTGAAGACCGTGCACCAGGGCAAGGCAGGCATCAAGATCCTGGAGCCCGAGGAGGGCAGTGAGG  
 TCAGCGTGGTCACTGTGGATGACATGGTACGCTGGTACCGAGGCACTGGCAGCGACAGCCGCTCACTCA  
 GCTCACAGTGGTCCCGTGGGAGCTGCAGTGACAGCCGATGAGACGGAAGTCTGAAGGCCGAGATCAGC  
 AAAGCTGTGAAGCAAGTGCAGGAAGAAGACCCCAACACTCACATCCTCTACGCTGTGACTCCTGTGGGG  
 ACAAGTTTCTGGATGCCAACAGCCTGGCTCAGCATGTGCGAATCCACACAGCCCAGGCACTGGTCATGTT  
 CCAGACAGACCGGACTTCTATCAGCAGTATGGGCCAGGTGGCAGTGGCCTGCCGGCAGGTGCTGCAG  
 GCTGGGGAGCTGGTCTTCCGCCCTCGCGACGGGCTGAGGGCCAGCCCGCACTGGCAGAGACCTCCCTCA  
 CAGCTCCTGAATGTCCCCGCTGCCGAG

**ACGCGT**ACGCGGCCGCTCGAGCAGAACTCATCTCAGAAGAGGATCTGGCAGCAATGATATCCTGGATT  
 ACAAGGATGACGACGATAAGGTTTAA

**Protein Sequence:** >RC216143 representing NM\_003443  
Red=Cloning site Green=Tags(s)

MDFPQHSQHVLEQLNQQRQLGLLCDCTFVVDGVHFKAHKAVLAACSEYFKMLFVDQKDVVHLDISNAAGL  
GQVLEFMYTAKLSLSPENVDDVLAVATFLQMQDIITACHALKSLAEPATSPGGNAEALATEGGDKRAKEE  
KVATSTLSRLEQAGRSTPIGPSRDLKEERGGQAQSAASGAEQTEKADAPREPPPVELKPDPTSGMAAAEA  
EAALSESSEQEMEVEPARKGEEEQKEQEEQEEGAGPAEVKEEGSQLENGEAPENENEEESAGTDSGQEL  
GSEARGLRSGTYGDRTESKAYGSVIHKCEDCGKEFTHTGNFKRHRIHTGEKPFSCRECSKAFSDPAACK  
AHEKTHSPLKPYGCEECGKSYRLISLLNLHKKRHSGEARYRCEDCGKLFSTSGNLKRHQLVHSGEKPYPQC  
DYCGRSFSDPSTSKMRHLETHDTEKHKCPHCDKKNQVGNLKAHLKIHIADGPLKCRECGKQFTTSGNLK  
RHLRIHSGEKPYPVCIHCQRQFADPGALQRHVRIHTGEKPCQCVMGKAFQASSLIAHVRQHTGEKPYVC  
ERCGRFVQSSQLANHIRHHDNIRPHKCSVCSKAFVNVGDL SKHIIHTGEKPYLCDKCGRGNRVDNLR  
SHVKTVHGKAGIKILEPEEGSEVSVTVDDMVTLATEALAATAVTQLTVVPVGAAVTADETEVLKAEIS  
KAVKQVQEEDPNTHILYACDSCGDKFLDANSLAQHVRIHTAQALVMFQTDADFYQQYGGTWPAGQVLQ  
AGELVFRPRDGAEGQPALAETSPTAPECPPPAE

TRTRPLEQKLISEEDLAANDILDYKDDDDKV

**Chromatograms:** [https://cdn.origene.com/chromatograms/mk6164\\_c07.zip](https://cdn.origene.com/chromatograms/mk6164_c07.zip)

**Restriction Sites:** Sgfl-Mlul

**Cloning Scheme:**


**ACCN:** NM\_003443

**ORF Size:** 2409 bp

**OTI Disclaimer:** The molecular sequence of this clone aligns with the gene accession number as a point of reference only. However, individual transcript sequences of the same gene can differ through naturally occurring variations (e.g. polymorphisms), each with its own valid existence. This clone is substantially in agreement with the reference, but a complete review of all prevailing variants is recommended prior to use. [More info](#)

**OTI Annotation:** This clone was engineered to express the complete ORF with an expression tag. Expression varies depending on the nature of the gene.

**Components:** The ORF clone is ion-exchange column purified and shipped in a 2D barcoded Matrix tube containing 10ug of transfection-ready, dried plasmid DNA (reconstitute with 100 ul of water).

**Reconstitution Method:**

1. Centrifuge at 5,000xg for 5min.
2. Carefully open the tube and add 100ul of sterile water to dissolve the DNA.
3. Close the tube and incubate for 10 minutes at room temperature.
4. Briefly vortex the tube and then do a quick spin (less than 5000xg) to concentrate the liquid at the bottom.
5. Store the suspended plasmid at -20°C. The DNA is stable for at least one year from date of shipping when stored at -20°C.

**RefSeq:** [NM\\_003443.3](#)

**RefSeq Size:** 2643 bp

**RefSeq ORF:** 2412 bp

**Locus ID:** 7709

**UniProt ID:** [Q13105](#)

**Cytogenetics:** 1p36.13

**Domains:** BTB, zf-C2H2

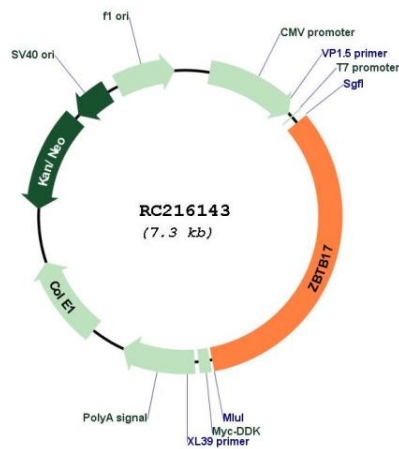
**Protein Families:** Transcription Factors

**Protein Pathways:** Cell cycle

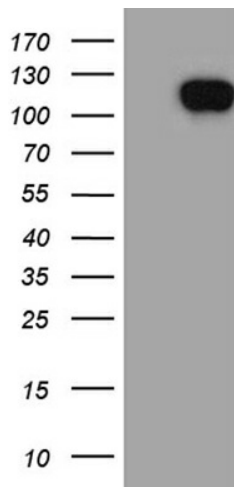
**MW:** 87.7 kDa

**Gene Summary:** This gene encodes a zinc finger protein involved in the regulation of c-myc. The symbol MIZ1 has also been associated with PIAS2 which is a different gene located on chromosome 18. [provided by RefSeq, Jul 2008]

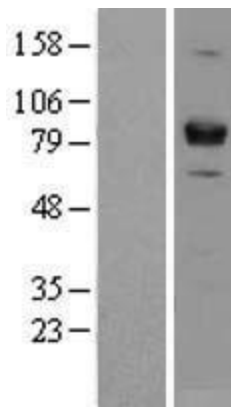
### Product images:



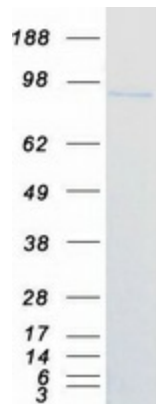
Circular map for RC216143



HEK293T cells were transfected with the pCMV6-ENTRY control (Cat# [PS100001], Left lane) or pCMV6-ENTRY ZBTB17 (Cat# RC216143, Right lane) cDNA for 48 hrs and lysed. Equivalent amounts of cell lysates (5 ug per lane) were separated by SDS-PAGE and immunoblotted with anti-ZBTB17 (Cat# [TA811543])(1:2000). Positive lysates [LY401167] (100ug) and [LC401167] (20ug) can be purchased separately from OriGene.



Western blot validation of overexpression lysate (Cat# [LY401167]) using anti-DDK antibody (Cat# [TA50011-100]). Left: Cell lysates from untransfected HEK293T cells; Right: Cell lysates from HEK293T cells transfected with RC216143 using transfection reagent MegaTran 2.0 (Cat# [TT210002]).



Coomassie blue staining of purified ZBTB17 protein (Cat# [TP316143]). The protein was produced from HEK293T cells transfected with ZBTB17 cDNA clone (Cat# RC216143) using MegaTran 2.0 (Cat# [TT210002]).