

Product datasheet for **RC216136**

FBXO10 (NM_012166) Human Tagged ORF Clone

Product data:

Product Type:	Expression Plasmids
Product Name:	FBXO10 (NM_012166) Human Tagged ORF Clone
Tag:	Myc-DDK
Symbol:	FBXO10
Synonyms:	FBX10; PRMT11
Mammalian Cell Selection:	Neomycin
Vector:	pCMV6-Entry (PS100001)
E. coli Selection:	Kanamycin (25 ug/mL)



[View online »](#)

ORF Nucleotide Sequence:

>RC216136 ORF sequence
 Red=Cloning site Blue=ORF Green=Tags(s)

TTTTGTAATACGACTCACTATAGGGCGGCCGGAATTCGTCGACTGGATCCGGTACCGAGGAGATCTGCC
 GCC**CGGATCGCC**

ATGGAGGCTGGTGGCCTCCCCTTGAGCTGTGGCGCATGATCTTAGCCTACTTGACCTTCCCGACCTGG
 GCCGCTGCAGCCTGGTATGCAGGGCCTGGTATGAACTGATCCTCAGTCTCGACAGCACCCGCTGGCGGCA
 GCTGTGTCTGGGTTGCACCGAGTGCCGCCATCCCAATTGGCCCAACCAGCCAGATGTGGAGCCTGAGTCT
 TGGAGAGAAGCCTTCAAGCAGCATTACCTTGATCCAAGACATGGACCAAGAATGCCTTGGACTTGGAGT
 CTTCCATCTGCTTTTCTCTATTCCGCCGGAGGAGGAACGACGTACCCTGAGTGTGGGCCAGGCCGTGA
 GTTTGACAGCCTGGGCAGTGCCTTGCCATGGCCAGCCTGTATGACCGAATTGTGCTCTTCCAGGTGTG
 TACGAAGAGCAAGGTGAAATCATCTTGAAGGTGCCTGTGGAGATTGTAGGGCAGGGGAAGTTGGGTGAAG
 TGGCCCTGCTGGCCAGCATTGATCAGCACTGCTCAACCACACGCCTGTGCAACCTCGTCTTACGCCAGC
 CTGTTTCTCACCCATCATGTATAAGACAACATCAGGTCACGTCCAGTTTGACAACCTGCAACTTTGAGAAC
 GGGCACATCCAGTCCATGGCCCGGACTTGCCAAGTGAAGTTCTGTACCTTAAAAACACCCATATCT
 TCCTGCACAACGTGCCCTGTGTCTTGAAAACTGTGAATTTGTGGCAGTGAACAACCTCTGTGAC
 TTTGAGGGTACCCATCTGCAGATAAGAACTGGGCTACAAGTATCTACTAGGGCTTATCAAGTCTCA
 CCCACTTTTCTCCCACAGAGGACTCTGACTTTTTAATGTCCCTGGACCTAGAGAGCCGGGACCAGGCCCT
 GGAGCCAAAGACCTGTGACATTGTTATCGAGGGCAGCCAGAGCCCTACCAGCCAGCTTCTAGCTCCCC
 AAAGCCAGGCTCCAAGGCTGGCTCACAGGAGCCAGAGTGGGTAGTGATGGTGAAGGGTGGCCAGACC
 CCGGACAGCAGCGATGGAGGCCGTAGTCCAGCGGTGAGGATGAAGATGAGGACCAGCTGATGTACAGAC
 TATCTACCAAGTGCAGGGCCACGCCCTGTATTGGGGGCTCATTTCTGGGCCACCTTACCAGGAGC
 ATCCATTACAGCTGCCAGCTGCCTAGTGCTGAACCTCACTGCAGCAGGAGCTGCAGAAGGATAAGGAGGCC
 ATGGCACTGGCCAACTCCGTGCAGGGCTGCCTCATCCGCAAGTGCCTCTTCCGGGACGGGAGGGAGCG
 TCTTCGTCTGCTCCACGGCAGAGCCAAGATGGAAGGAAACATCTTCCGGAACCTGACTTACGCAGTGC
 GTGTATACATAATAGCAAGATCATGCTCAGGAACGACATTTACCGCTGCCGAGCGTCAGGCATCTTT
 CTTGCTTGGAGGGCGTGGCTTATTGCCGGCAACAACATTTACCACAATGCAGAGGCTGGTGTAGACA
 TCCGAAAAAGTCCAACCCTACTACTGTGTAACCAGATCCACCATGGCCTTCGCTCTGGCATTGTCGT
 CCTTGGCAATGGGAAAGGCATCATCCGGAACAATCAAATCTTTTCCAATAAGGAGGCTGGCATTACATC
 CTGTACCAGGAAACCCGTTGTGAGCGGGAACCACATCTTCAAGGGCCGTGCTGCCGGCATAAGCAGTGA
 ATGAGAACGGCAAGGCCCTCATACAGAAAATGTCATCCGTGAGAATCAGTGGGGAGGTGTGGACATCCG
 CCGTGGAGGGATCCCCGTTCTCAGGAGTAACTCATCTGCTTTGGCTATTAGATGGTGTGGTGTGGGA
 GACGAAGGCAAGGCCCTCATAGAAGGAAATACCATCTACGCTAACAAGGGCTGTGGTGTGGATGATGT
 CGTCCAGCCTCCCCATGTACCAGCAATCACGTACGCTACAATGGCCTGTATGGAGTGGCAGTATTTAG
 CCAGAAGGATGGCTCCAGCGAGTTACCTCGAGGCCACAGGGCTCAAGAGAACTTCCAGCGAGGATGGGGAC
 GCCATCCTCTGGGAGACAGAGCTGGAGAAGGAGGACGACCCACTGCGCCGGCCCATACCCATAGCTCTTG
 TTGAGTCTAACAGTATTAATCACAATGGAGCCTCAGGACTCTATGTCCAGAGCAGCGAGGCACTGCATGT
 CATCACCAATGTGATCCACGCGAATGGGACAGAGGCACTTACTGTGGCCAGAGCAGCAACCCACCCGA
 GTGGCCAAACAACAGCATCTCCTGCAACCGCAAAGTGGGGTCAAGGTTGAGGCCCAAGTGAAGTGGAGC
 TCCGGGGCAATGGTATCTATGACAACAGAGGCCACGGCATTATACCAAGGGCGACAGCACCATCGTCAT
 TGAAAACGATATCATTGGCAACCGGGCAGCGGCTGCAGCTGTGCCAGGTCCGACACTAAAGTAATA
 AAGAACCAGTCCACTCGTTCCGGGCTACGGCATCGCGTGCAGGGCCGTGCCAAGGCCCTGGTGCAGG
 AAAACATCATCTTCCAGGGCAAACAGTAAGACCATCTTTCAGCAGATCTCAAACAACCGAGAATGCAT
 CATGCAAAAACAAGTCTCTGGTCTTCAAGAAAAAGTCTGATACGTGGCGCCTGGTGAACCCACCAGCA
 CGGCCACCTTAAAAATCTCTCAGAGCTCCCTCGGACGCCACAATGGGCAGAAGGTGACAGCCATGG
 CAACGAGGATCACAGCCGGGTGGAAGGTGTTACCACAGCAACCGCAGTGTCTTCTGCACCATCTGTG

ACGCGTACGCGGCCGCTCGAGCAGAACTCATCTCAGAAGAGGATCTGGCAGCAAATGATATCCTGGATT
 ACAAGGATGACGACGATAAGGTTTAA

Protein Sequence: >RC216136 protein sequence
 Red=Cloning site Green=Tags(s)

```
MEAGGLPELEWRMILAYLHLPDLGRCSLVCRAWYELILSLDSTRWRQLCLGCTECRHPNWPNPQDPEVES
WREAFKQHYLASKTWTKNALDLESSICFSLFRRRRERRTLVSGPGREFDSLGSALAMASLYDRIVLFPGV
YEEQGEIILKVPVEIVGQKLGVEALLASIDQHCSTTRLCNLVFTPWFSPIMYKTTSGHVQFDNCNFEN
GHIQVHGPGTCQVKCFCTFKNTHIFLHNVPLCVLENCEFFVGSENNVTVEGHPSADKNWAYKLLGLIKSS
PTFLPTEDSDFLMSLDLESRDQAWSPKTCDIVIEGSQSPTSPASSPKPGSKAGSQEAEVSDGERVAQT
PDSSDGLSPSGEDEDEDQMYRLSYQVQGRPVVLGGSFLGPPLPGASIQLPSCVLNLSLQQLQKDKEA
MALANSVQGLIRKCLFRDGKGVFVCSHGKRAKMEGNIFRNLTYAVRCIHNSKIIMLRNDIYRCRASGIF
LRLEGGGLIAGNNIYHNAEAGVDIRKKSNPILCNQIHHGLRSGIVVLGNGKGIIRNNQIFSNKEAGIYI
LYHGNPVSNGNHIFKGRAAGIAVNENKGLITENVIRENQWGGVDIRGGIPVLRSLICFGYSDGVVVG
DEGKGLIEGNTIYANKGCGVMMSSSLPHVTSNHVSYNGLYGVAVFSQKDGSSSELPRGHRAQENFSEDGD
AILWETELEKEDDPLRRPITIALVESNSINHGASGLYVQSSEALHVITNVIHANGDRGITVAQSSQPTR
VANNSISCNRQSGVKVEAQCKVELRNGIYDNRGHGIIITKGDSTIVIENDIIGNRSGQLLPRSDTKVI
KNRIHSFRAYGIAVRGRAKALVQENIIFQGKTSKTIFFQQISNNRECIMQNNKFLVFKKSDTWRLVNPPA
RPHLENSLRPSAAHNGQKVTAMATRITARVEGGYHSNRSVFCTIL
```

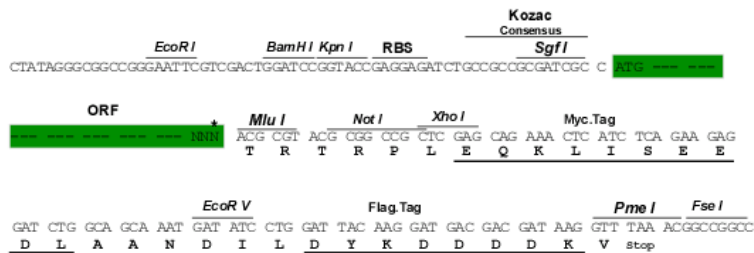
TRTRPLEQKLISEEDLAANDILDYKDDDDKV

Chromatograms: https://cdn.origene.com/chromatograms/mk6688_b08.zip

Restriction Sites: SgfI-MluI

Cloning Scheme:

Cloning sites used for ORF Shuttling:



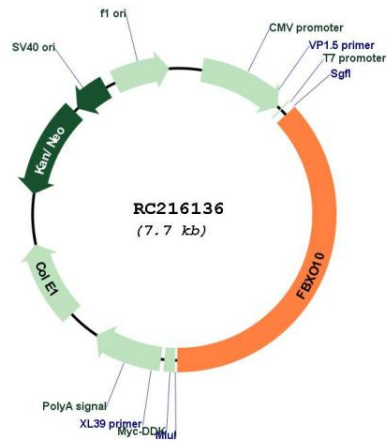
* The last codon before the Stop codon of the ORF

ACCN: NM_012166

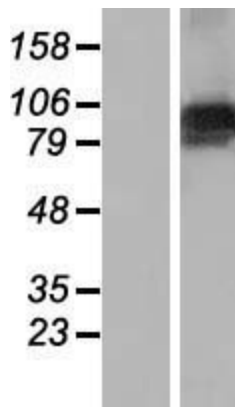
ORF Size: 2870 bp

OTI Disclaimer:	The molecular sequence of this clone aligns with the gene accession number as a point of reference only. However, individual transcript sequences of the same gene can differ through naturally occurring variations (e.g. polymorphisms), each with its own valid existence. This clone is substantially in agreement with the reference, but a complete review of all prevailing variants is recommended prior to use. More info
OTI Annotation:	This clone was engineered to express the complete ORF with an expression tag. Expression varies depending on the nature of the gene.
Components:	The ORF clone is ion-exchange column purified and shipped in a 2D barcoded Matrix tube containing 10ug of transfection-ready, dried plasmid DNA (reconstitute with 100 ul of water).
Reconstitution Method:	<ol style="list-style-type: none">1. Centrifuge at 5,000xg for 5min.2. Carefully open the tube and add 100ul of sterile water to dissolve the DNA.3. Close the tube and incubate for 10 minutes at room temperature.4. Briefly vortex the tube and then do a quick spin (less than 5000xg) to concentrate the liquid at the bottom.5. Store the suspended plasmid at -20°C. The DNA is stable for at least one year from date of shipping when stored at -20°C.
RefSeq:	NM_012166.2 , NP_036298.2
RefSeq Size:	4592 bp
RefSeq ORF:	2871 bp
Locus ID:	26267
UniProt ID:	Q9UK96
Cytogenetics:	9p13.2
Protein Families:	Druggable Genome
MW:	105.2 kDa
Gene Summary:	Members of the F-box protein family, such as FBXO10, are characterized by an approximately 40-amino acid F-box motif. SCF complexes, formed by SKP1 (MIM 601434), cullin (see CUL1; MIM 603134), and F-box proteins, act as protein-ubiquitin ligases. F-box proteins interact with SKP1 through the F box, and they interact with ubiquitination targets through other protein interaction domains (Jin et al., 2004 [PubMed 15520277]).[supplied by OMIM, Mar 2008]

Product images:



Circular map for RC216136



Western blot validation of overexpression lysate (Cat# [LY415944]) using anti-DDK antibody (Cat# [TA50011-100]). Left: Cell lysates from untransfected HEK293T cells; Right: Cell lysates from HEK293T cells transfected with RC216136 using transfection reagent MegaTran 2.0 (Cat# [TT210002]).