

## Product datasheet for **RC216135**

### cleavage stimulation factor (CSTF1) (NM\_001033522) Human Tagged ORF Clone

#### Product data:

Product Type:	Expression Plasmids
Product Name:	cleavage stimulation factor (CSTF1) (NM_001033522) Human Tagged ORF Clone
Tag:	Myc-DDK
Symbol:	cleavage stimulation factor
Synonyms:	CstF-50; CstFp50
Mammalian Cell Selection:	Neomycin
Vector:	pCMV6-Entry (PS100001)
E. coli Selection:	Kanamycin (25 ug/mL)



[View online »](#)

**ORF Nucleotide Sequence:**

>RC216135 ORF sequence  
 Red=Cloning site Blue=ORF Green=Tags(s)

TTTTGTAATACGACTCACTATAGGGCGGCCGGAATTCGTCGACTGGATCCGGTACCGAGGAGATCTGCC  
 GCCCGGATCGCC

ATGTACAGAACCAAAGTGGGCTTGAAGGACCGCCAGCAGCTCTACAAGCTGATCATTAGCCAGCTGCTAT  
 ATGACGGCTACATCAGCATCGCCAATGGCCTCATCAATGAAATCAAGCCTCAGTCTGTGTGTCACCCTC  
 GGAGCAGCTCCTGCATCTCATCAAACCTCGGAATGAAAAACGATGACACCGCAGTTCAGTATGCAATTGGT  
 CGTTCAGATACTGTTGCCCTGGCACAGGGATTGACCTGGAATTTGATGCAGATGTTAGACTATGTCCC  
 CAGAGGCTTCTGAGTACGAAACATGCTATGTCACATCACATAAAGGACCATGCCGTGTAGCTACCTATAG  
 TAGAGATGGACAGTTAATAGCTACTGGGCTGCTGATGCTTCGATAAAGATACTTGACACAGAGAGGATG  
 TTGGCCAAAAGTGCCATGCCAATAGAGGTCATGATGAATGAGACCGCACAAAAATATGAAAAACCACC  
 CAGTGATTGCAACTCTTTATGACCATGTGGATGAAGTACGTGCCTTGCTTTCCACCAACAGAACAGAT  
 CCTGGCTTCTGGTCAAGGGATTAACTCTTAAATTTTATTGATTATTCCAACCATCAGCAAAAAGAGCC  
 TTCAAATACATTAGGAAGCTGAAATGTTACGTTCCATCTCTTTTCATCCTTCTGGAGACTTTATACTTG  
 TCGGAACCTCAGCATCCTACTCTTCGCCTTTATGATATCAACACCTTTCAATGTTTGTCTCTTGCAATCC  
 TCAAGTCAACACACCGATGCTATATGTTCCGTTAATTACAATCTAGTGCCAATATGTACGTAACCTGGA  
 AGCAAGGACGGCTGCATCAAATTATGGGATGGTGTTCAAATCGATGCATCAAACTTTTGGAAAAGCAC  
 ATGACGGTGTGAAAGTTTGTCTGCCATTTTTTCCAAAATTCTAAATACATTCTCTCAAGTGGAAAAGA  
 CTCTGTAGCTAACTTTGGGAAATCAACGGGACGAACACTGGTCAGATACACGGGCGCGGTTTAAAGT  
 GGACGCCAGGTGCACCGGACACAGGCTGTGTTTAAACACACCGAGGACTATGTGTTGCTGCCCGACGAGA  
 GGACGATCAGTCTTTGCTGCTGGACTCGAGGACAGCCGAGCGGAGAAACCTGCTGCTGTTGGGGCACAA  
 CAATATTGTACGCTGCATAGTGCACTCCCCACCAACCCCGGGTTCATGACGTGCAGCGATGACTTCAGA  
 GCGCGTTTTTGTACCGGAGATCGACCACTGAC

ACGCGTACGCGGCCGCTCGAGCAGAAACTCATCTCAGAAGAGGATCTGGCAGCAAATGATATCCTGGATT  
 ACAAGGATGACGACGATAAGGTTTAA

**Protein Sequence:**

>RC216135 protein sequence  
 Red=Cloning site Green=Tags(s)

MYRTKVGKDRQQLYKLIISQLLYDGYISIANGLINEIKPQSVCAPSEQLLHLIKLGMENDDTAVQYAIIG  
 RSDTVAPGTGIDLEFDADVQTMSPLEASEYETCYVTSKGPVATYSRDGQLIATGSADASIKILDTERM  
 LAKSAMP I EVMMNETAQNMENHPVIRTLYDHVDEVTCLAFHPTEQILASGRDYTLKLFDYKPSAKRA  
 FKYIQEAEMLRISFHPSGDFILVGTQHPTLRLYDINTFQCFVSCNPQDQHTDAICSVNYNSSANMYVTG  
 SKDGCIKLWDGVSNRCITTFEKAHDGAEVCSAIFSKNSKYILSSGKDSVAKLWEISTGRTLVRVTGAGLS  
 GRQVHRTQAVFNHTEDYVLLPDERTISLCCWDSRTAERRNLLSLGHNNIVRCIVHSPTNPGFMTCSDDFR  
 ARFWYRRSTTD

TRTRPLEQKLISEEDLAANDILDYKDDDDKV

**Chromatograms:**

[https://cdn.origene.com/chromatograms/mk6409\\_e12.zip](https://cdn.origene.com/chromatograms/mk6409_e12.zip)

**Restriction Sites:**

Sgfl-Mlul

Cloning Scheme:



ACCN: NM\_001033522

ORF Size: 1293 bp

OTI Disclaimer: The molecular sequence of this clone aligns with the gene accession number as a point of reference only. However, individual transcript sequences of the same gene can differ through naturally occurring variations (e.g. polymorphisms), each with its own valid existence. This clone is substantially in agreement with the reference, but a complete review of all prevailing variants is recommended prior to use. [More info](#)

OTI Annotation: This clone was engineered to express the complete ORF with an expression tag. Expression varies depending on the nature of the gene.

Components: The ORF clone is ion-exchange column purified and shipped in a 2D barcoded Matrix tube containing 10ug of transfection-ready, dried plasmid DNA (reconstitute with 100 ul of water).

Reconstitution Method:

1. Centrifuge at 5,000xg for 5min.
2. Carefully open the tube and add 100ul of sterile water to dissolve the DNA.
3. Close the tube and incubate for 10 minutes at room temperature.
4. Briefly vortex the tube and then do a quick spin (less than 5000xg) to concentrate the liquid at the bottom.
5. Store the suspended plasmid at -20°C. The DNA is stable for at least one year from date of shipping when stored at -20°C.

RefSeq: [NM\\_001033522.2](#)

RefSeq Size: 2292 bp

RefSeq ORF: 1296 bp

Locus ID: 1477

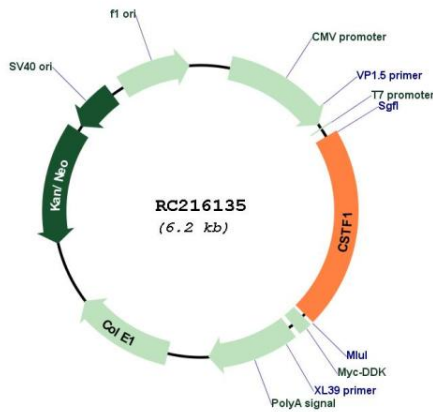
UniProt ID: [Q05048](#)

Cytogenetics: 20q13.2-q13.31

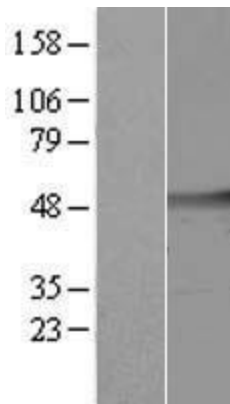
MW: 48.4 kDa

**Gene Summary:** This gene encodes one of three subunits which combine to form cleavage stimulation factor (CSTF). CSTF is involved in the polyadenylation and 3' end cleavage of pre-mRNAs. Similar to mammalian G protein beta subunits, this protein contains transducin-like repeats. Several transcript variants with different 5' UTR, but encoding the same protein, have been found for this gene. [provided by RefSeq, Jul 2008]

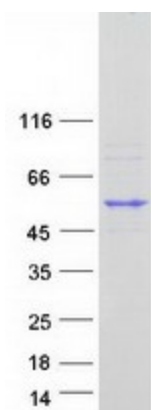
**Product images:**



Circular map for RC216135



Western blot validation of overexpression lysate (Cat# [LY422380]) using anti-DDK antibody (Cat# [TA50011-100]). Left: Cell lysates from untransfected HEK293T cells; Right: Cell lysates from HEK293T cells transfected with [RC219441] using transfection reagent MegaTran 2.0 (Cat# [TT210002]).



Coomassie blue staining of purified CSTF1 protein (Cat# [TP316135]). The protein was produced from HEK293T cells transfected with CSTF1 cDNA clone (Cat# RC216135) using MegaTran 2.0 (Cat# [TT210002]).