

Product datasheet for **RC216131**

SCF (KITLG) (NM_000899) Human Tagged ORF Clone

Product data:

Product Type:	Expression Plasmids
Product Name:	SCF (KITLG) (NM_000899) Human Tagged ORF Clone
Tag:	Myc-DDK
Symbol:	SCF
Synonyms:	DCUA; DFNA69; FPH2; FPHH; Kitl; KL-1; MGF; SCF; SF; SHEP7; SLF
Mammalian Cell Selection:	Neomycin
Vector:	pCMV6-Entry (PS100001)
E. coli Selection:	Kanamycin (25 ug/mL)
ORF Nucleotide Sequence:	>RC216131 representing NM_000899 Red=Cloning site Blue=ORF Green=Tags(s)

TTTTGTAATACGACTCACTATAGGGCGCCGGGAATTCGTCGACTGGATCCGGTACCGAGGAGATCTGCC
GCC**CGATCGCC**

ATGAAGAAGACACAACTTGGATTCTCACTTGCATTTATCTTCAGCTGCTCCTATTTAATCCTCTCGTCA
AAACTGAAGGGATCTGCAGGAATCGTGTGACTAATAATGTAAAAGACGCTCACTAAATTGGTGCAAATCT
TCCAAAAGACTACATGATAACCCCTCAAATATGTCCCGGGATGGATGTTTTGCCAAGTCATTGTTGGATA
AGCGAGATGGTAGTACAATTGTGACAGCCTTGACTGATCTTCTGGACAAGTTTTCAAATATTTCTGAAG
GCTTGAGTAATTATCCATCATAGACAACTTGTGAATATAGTGGATGACCTTGTGGAGTGCCTGAAAGA
AAACTCATCTAAGGATCTAAAAAATCATTCAAGAGCCAGAACCCAGGCTCTTTACTCCTGAAGAATTC
TTTAGAATTTTTAATAGATCCATTGATGCCTTCAAGGACTTTGTAGTGGCATCTGAAACTAGTGATTGTG
TGGTTTCTTCAACATTAAGTCTGAGAAAGATTCCAGAGTCAGTGTACAAAAACCATTTATGTTACCCCC
TGTTGCAGCCAGCTCCCTTAGGAATGACAGCAGTAGCAGTAATAGGAAGGCCAAAAATCCCCCTGGAGAC
TCCAGCCTACACTGGGCAGCCATGGCATTGCCAGCATTGTTTTCTTTATAATTGGCTTTGCTTTGGAG
CCTTATACTGGAAGAAGAGACAGCCAAGTCTTACAAGGCCAGTTGAAAATATACAAATTAATGAAGAGGA
TAATGAGATAAGTATGTTGCAAGAGAAAAGAGAGAGAGTTTCAAGAAGTG

ACGCGTACGCGGCCGCTCGAGCAGAACTCATCTCAGAAGAGGATCTGGCAGCAAATGATATCCTGGATT
ACAAGGATGACGACGATAAGGTTTAA



[View online »](#)

Protein Sequence: >RC216131 representing NM_000899
 Red=Cloning site Green=Tags(s)

MKKTQTWILTCIYLQLLLFNPLVKTEGICRNRVTNNVKDVTKLVANLPKDYMITLKYYVPGMDVLP SHCWI
 SEMVVQLSDSLTDLLDKFSNISEGLSNYSIIDKLVNIVDDLVECVKENS SKDLKKSFKSPEPRLF TPEEF
 FRIFNRSIDAFKDFVVAETSDCVVSSLT SPEKDSRVSVTKPFMLPPVAASSLRNDSSSSNRKAKNPPGD
 SSLHWAAMALPALFSLIIGFAFGALYWKKRQPSL TRAVENIQINEEDNEISMLQEKEREFQEV

TRTRPLEQKLISEEDLAANDILDYKDDDDKV

Chromatograms: https://cdn.origene.com/chromatograms/mk6108_e12.zip

Restriction Sites: SgfI-MluI

Cloning Scheme:

Cloning sites used for ORF Shuttling:



* The last codon before the Stop codon of the ORF

ACCN: NM_000899

ORF Size: 819 bp

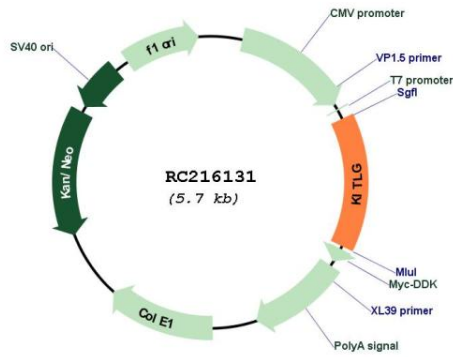
OTI Disclaimer: The molecular sequence of this clone aligns with the gene accession number as a point of reference only. However, individual transcript sequences of the same gene can differ through naturally occurring variations (e.g. polymorphisms), each with its own valid existence. This clone is substantially in agreement with the reference, but a complete review of all prevailing variants is recommended prior to use. [More info](#)

OTI Annotation: This clone was engineered to express the complete ORF with an expression tag. Expression varies depending on the nature of the gene.

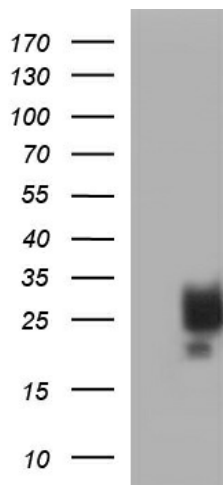
Components: The ORF clone is ion-exchange column purified and shipped in a 2D barcoded Matrix tube containing 10ug of transfection-ready, dried plasmid DNA (reconstitute with 100 ul of water).

Reconstitution Method:	<ol style="list-style-type: none">1. Centrifuge at 5,000xg for 5min.2. Carefully open the tube and add 100ul of sterile water to dissolve the DNA.3. Close the tube and incubate for 10 minutes at room temperature.4. Briefly vortex the tube and then do a quick spin (less than 5000xg) to concentrate the liquid at the bottom.5. Store the suspended plasmid at -20°C. The DNA is stable for at least one year from date of shipping when stored at -20°C.
RefSeq:	NM_000899.5
RefSeq Size:	5435 bp
RefSeq ORF:	822 bp
Locus ID:	4254
UniProt ID:	P21583
Cytogenetics:	12q21.32
Domains:	SCF
Protein Families:	Druggable Genome, Transmembrane
Protein Pathways:	Cytokine-cytokine receptor interaction, Hematopoietic cell lineage, Melanogenesis, Pathways in cancer
MW:	30.9 kDa
Gene Summary:	This gene encodes the ligand of the tyrosine-kinase receptor encoded by the KIT locus. This ligand is a pleiotropic factor that acts in utero in germ cell and neural cell development, and hematopoiesis, all believed to reflect a role in cell migration. In adults, it functions pleiotropically, while mostly noted for its continued requirement in hematopoiesis. Two transcript variants encoding different isoforms have been found for this gene. [provided by RefSeq, Jul 2008]

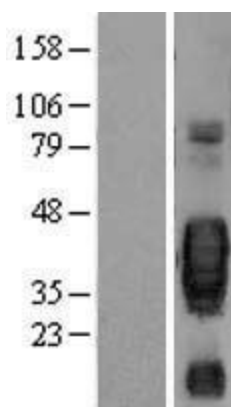
Product images:



Circular map for RC216131



HEK293T cells were transfected with the pCMV6-ENTRY control (Cat# [PS100001], Left lane) or pCMV6-ENTRY KITLG (Cat# RC216131, Right lane) cDNA for 48 hrs and lysed. Equivalent amounts of cell lysates (5 ug per lane) were separated by SDS-PAGE and immunoblotted with anti-KITLG (Cat# [TA507209]). Positive lysates [LY400322] (100ug) and [LC400322] (20ug) can be purchased separately from OriGene.



Western blot validation of overexpression lysate (Cat# [LY400322]) using anti-DDK antibody (Cat# [TA50011-100]). Left: Cell lysates from untransfected HEK293T cells; Right: Cell lysates from HEK293T cells transfected with RC216131 using transfection reagent MegaTran 2.0 (Cat# [TT210002]).