

Product datasheet for RC216125

TM2D2 (NM_001024381) Human Tagged ORF Clone

Product data:

Product Type:	Expression Plasmids
Product Name:	TM2D2 (NM_001024381) Human Tagged ORF Clone
Tag:	Myc-DDK
Symbol:	TM2D2
Synonyms:	BLP1
Mammalian Cell Selection:	Neomycin
Vector:	pCMV6-Entry (PS100001)
E. coli Selection:	Kanamycin (25 ug/mL)
ORF Nucleotide Sequence:	>RC216125 ORF sequence Red=Cloning site Blue=ORF Green=Tags(s)

TTTTGTAATACGACTCACTATAGGGCGCCGGGAATTCGTCGACTGGATCCGGTACCGAGGAGATCTGCC
GCC**CGATCGCC**

ATGAAGAATGTCTTTTGCCGTTTTGATTACGTGCATGCAAACAGCGATTTGCAAAGACCGTATGATGA
TGATCATGATCTTACTGGTGAATTACAGACCTGATGAATTTATAGAATGTGAAGACCCAGTGATCATGT
TGGAAATGCAACTGCATCCAGGAACCTGGTTATGGTTGTCTCAAGTTCGGCGGTACGGCCTACAGCGAC
GTGGAACACACTTCAGTCCAGTCCATGCCTTAGATGGAATTGAGTGTGCCAGTCTAGGACCTTCTAC
GAGAAAATAAACCTTGATAAAGTATACCGGACACTACTTCATAACCACTTTACTCTACTCCTTCTCCT
GGGATGTTTTGGTGTGGATCGATTCTGTTTGGGACACACTGGCACTGCAGTAGGGAAGCTGTTGACGCTT
GGAGGACTTGGGATTTGGTGGTTTGTGACCTATTTTGCTAATTACTGGAGGGCTGATGCCAAGTGATG
GCAGCAACTGGTGCCTGTTTAC

ACGCGTACGCGGCCGCTCGAGCAGAACTCATCTCAGAAGAGGATCTGGCAGCAAATGATATCCTGGATT
ACAAGGATGACGACGATAAGGTTTAA

Protein Sequence:	>RC216125 protein sequence Red=Cloning site Green=Tags(s)
-------------------	--

MKKCLLPVLITCMQTAICKDRMMIMILLVNYRPDEFIECEDPVDHVGNATASQELGYGCLKFQQAYSD
VEHTSVQCHALDGI ECASPRTFLENKPCIKYTGHYFITLLYSFFLGCFGVDRFLGHTGTAVGKLLTL
GGLGIWWFVDLILLITGGLMPSDGSNWCTVY

TRTRPLEQKLISEEDLAANDILDYKDDDDKV

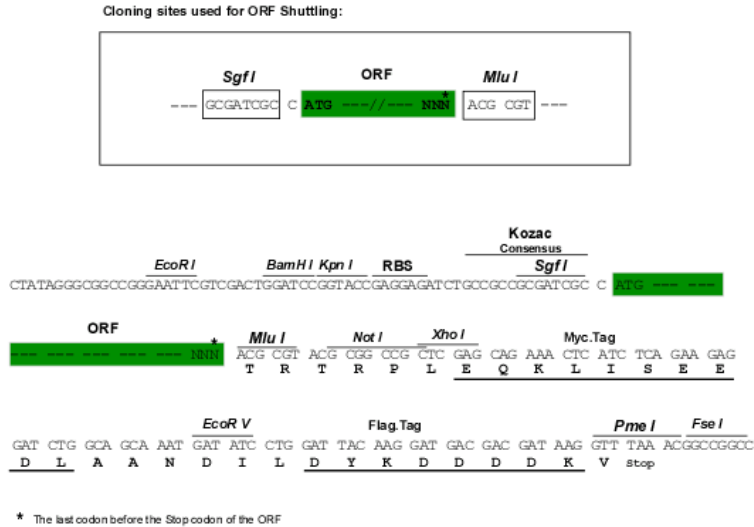
Chromatograms:	https://cdn.origene.com/chromatograms/mk6391_a06.zip
----------------	---



[View online »](#)

Restriction Sites: SgfI-MluI

Cloning Scheme:



ACCN: NM_001024381

ORF Size: 513 bp

OTI Disclaimer: The molecular sequence of this clone aligns with the gene accession number as a point of reference only. However, individual transcript sequences of the same gene can differ through naturally occurring variations (e.g. polymorphisms), each with its own valid existence. This clone is substantially in agreement with the reference, but a complete review of all prevailing variants is recommended prior to use. [More info](#)

OTI Annotation: This clone was engineered to express the complete ORF with an expression tag. Expression varies depending on the nature of the gene.

Components: The ORF clone is ion-exchange column purified and shipped in a 2D barcoded Matrix tube containing 10ug of transfection-ready, dried plasmid DNA (reconstitute with 100 ul of water).

Reconstitution Method:

1. Centrifuge at 5,000xg for 5min.
2. Carefully open the tube and add 100ul of sterile water to dissolve the DNA.
3. Close the tube and incubate for 10 minutes at room temperature.
4. Briefly vortex the tube and then do a quick spin (less than 5000xg) to concentrate the liquid at the bottom.
5. Store the suspended plasmid at -20°C. The DNA is stable for at least one year from date of shipping when stored at -20°C.

RefSeq: [NM_001024381.2](#)

RefSeq Size: 3334 bp

RefSeq ORF: 516 bp

Locus ID: 83877

UniProt ID: [Q9BX73](#)

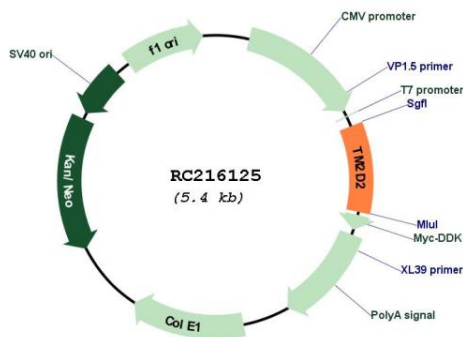
Cytogenetics: 8p11.22

Protein Families: Druggable Genome, Transmembrane

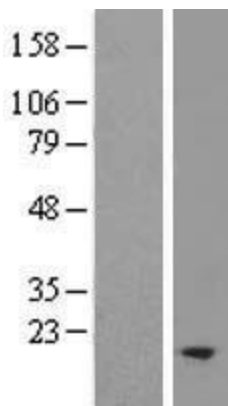
MW: 19 kDa

Gene Summary: The protein encoded by this gene contains a structural module related to that of the seven transmembrane domain G protein-coupled receptor superfamily. This protein has sequence and structural similarities to the beta-amyloid binding protein (BBP), but, unlike BBP, it does not regulate a response to beta-amyloid peptide. This protein may have regulatory roles in cell death or proliferation signal cascades. This gene has multiple alternatively spliced transcript variants which encode two different isoforms. [provided by RefSeq, Jul 2008]

Product images:



Circular map for RC216125



Western blot validation of overexpression lysate (Cat# [LY400403]) using anti-DDK antibody (Cat# [TA50011-100]). Left: Cell lysates from untransfected HEK293T cells; Right: Cell lysates from HEK293T cells transfected with [RC220538] using transfection reagent MegaTran 2.0 (Cat# [TT210002]).