

Product datasheet for RC216124

CRF1 (CRHR1) (NM_004382) Human Tagged ORF Clone

Product data:

Product Type:	Expression Plasmids
Product Name:	CRF1 (CRHR1) (NM_004382) Human Tagged ORF Clone
Tag:	Myc-DDK
Symbol:	CRF1
Synonyms:	CRF-R; CRF-R-1; CRF-R1; CRF1; CRFR-1; CRFR1; CRH-R-1; CRH-R1; CRHR; CRHR1L
Mammalian Cell Selection:	Neomycin
Vector:	pCMV6-Entry (PS100001)
E. coli Selection:	Kanamycin (25 ug/mL)
ORF Nucleotide Sequence:	>RC216124 ORF sequence Red=Cloning site Blue=ORF Green=Tags(s)

TTTTGTAATACGACTCACTATAGGGCGGCCGGAATTCGTCGACTGGATCCGGTACCGAGGAGATCTGCC
GCCCGGATCGCC

ATGGGAGGGCACCCGAGCTCCGTCTCGTCAAGGCCCTTCTCCTTCTGGGGCTGAACCCGTCCTCGCT
CCCTCCAGGACCAGCACTGCGAGAGCCTGTCCCTGGCCAGCAACATCTCAGGACTGCAGTCAACGCATC
CGTGGACCTCATTGGCACCTGCTGGCCCCGAGCCCTGCGGGGACAGTGTGGTTCGGCCCTGCCCTGCC
TTTTTCTATGGTGTCCGCTACAATACCACAAACAATGGCTACCGGGAGTGCCTGGCCAATGCCAGCTGGG
CCGCCCGGTGAATTACTCCGAGTGCCAGGAGATCCTCAATGAGGAGAAAAAAGCAAGGTGCACTACCA
TGTGCGAGTCATCATCACTACCTGGGCCACTGTATCTCCTGGTGGCCCTCCTGGTGGCCCTTGTCCCTC
TTTCTGCGGCTCAGGAGCATCCGGTGCCTGCGAAACATCATCCACTGGAACCTCATCTCCGCCTTATCC
TGCGCAACGCCACCTGGTTCGTGGTCCAGCTAACCATGAGCCCCGAGGTCCACCAGAGCAACGTGGGCTG
GTGAGGTTGGTACAGCCGCTACAACACTTCCATGTGACCAACTTCTTCTGGATGTTCCGGCAGGGC
TGCTACCTGCACAGCCATCGTGCTCACCTACTCCACTGACCGGCTGCGCAAATGGATGTTTCTGCA
TTGGCTGGGTGTGCCCTTCCCCATCATTGTGGCTGGCCATTGGGAAGCTGTACTACGACAATGAGAA
GTGCTGGTTTGGAAAAGCCTGGGGTGTACCCGACTACATCTACCAGGGCCCCATGATCCTGGTCCCTG
CTGATCAATTTTCACTTTTCAACATCGTCCGCATCCTCATGACCAAGCTCCGGGCATCCACCACGT
CTGAGACCATTACGTACAGGAAGGCTGTGAAAGCACTCTGGTGTCTGCCCCCTCCTGGGCATCACCTA
CATGCTGTTCTTCTGCAATCCCGGGGAGGATGAGGTCTCCCGGGTCTTCTCATCTACTTCAACTCCTTC
CTGGAATCCTTCCAGGGTCTTTGTGTCTGTGTTCTACTGTTTCTCAATAGTGAGGTCCGTTCTGCCA
TCCGGAAGAGGTGGCACCAGGAGGACCAAGCACTCGATCCGTGCCGAGTGGCCCGTCCATGTCCAT
CCCCACCTCCCCAACCCGTGTCAGCTTTACAGCATCAAGCAGTCCACAGCAGTC

ACGGTACGCGGCCGCTCGAGCAGAACTCATCTCAGAAGAGGATCTGGCAGCAATGATATCCTGGATT
ACAAGGATGACGACGATAAGGTTTAA



[View online >](#)

Protein Sequence: >RC216124 protein sequence
Red=Cloning site Green=Tags(s)

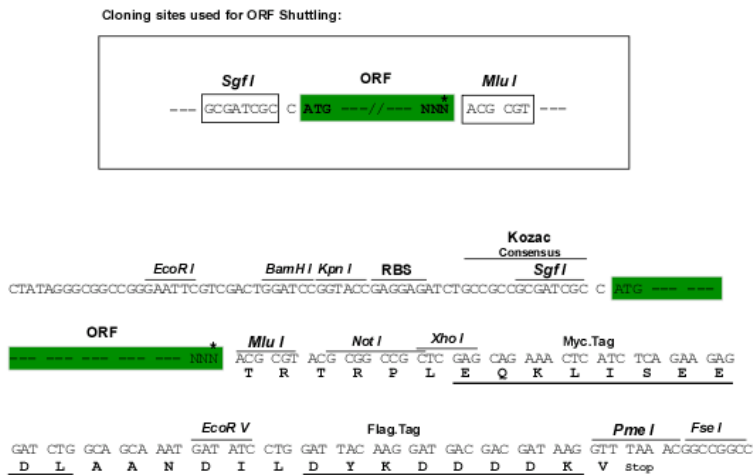
MGGHPQLRLVKALLLLGLNPVSASLQDQHCELSLASNISGLQCNASVDLIGTCWPRSPAGQLVVRPCPA
 FFYGVRYNTTNGYRECLANGSWAARVNYSECQEILNEEKSKVHYHVAVIINYLGHCSLVALLVAFVL
 FLRLRSIRCLRNIHWNLISAFILRNATWVQVQLTMSPEVHQSNVWGCRLVTAAYNYFHVTNFFWMFGEG
 CYLHTAIVLTYSTDRLRKWMFICIGWGVFPPIIVAWAIGKLYDNEKCFWFKRPGVYTDYIYQGPMLVL
 LINFIFLFNIVRILMTKLRASTTSETIQYRKAVKATLVLLPLLGIYMLFFVNPGEVSRVVFYFNSF
 LESFQGGFFVSFVYCFLNSEVRSAIRKRWHRWQDKHSIRARVARAMSIPTSPTRVSVFHSIKQSTAV

TRTRPLEQKLISEEDLAANDILDYKDDDDKV

Chromatograms: https://cdn.origene.com/chromatograms/mk6599_f05.zip

Restriction Sites: SgfI-MluI

Cloning Scheme:



* The last codon before the Stop codon of the ORF

ACCN: NM_004382

ORF Size: 1245 bp

OTI Disclaimer: The molecular sequence of this clone aligns with the gene accession number as a point of reference only. However, individual transcript sequences of the same gene can differ through naturally occurring variations (e.g. polymorphisms), each with its own valid existence. This clone is substantially in agreement with the reference, but a complete review of all prevailing variants is recommended prior to use. [More info](#)

OTI Annotation: This clone was engineered to express the complete ORF with an expression tag. Expression varies depending on the nature of the gene.

Components: The ORF clone is ion-exchange column purified and shipped in a 2D barcoded Matrix tube containing 10ug of transfection-ready, dried plasmid DNA (reconstitute with 100 ul of water).

Reconstitution Method:

1. Centrifuge at 5,000xg for 5min.
2. Carefully open the tube and add 100ul of sterile water to dissolve the DNA.
3. Close the tube and incubate for 10 minutes at room temperature.
4. Briefly vortex the tube and then do a quick spin (less than 5000xg) to concentrate the liquid at the bottom.
5. Store the suspended plasmid at -20°C. The DNA is stable for at least one year from date of shipping when stored at -20°C.

RefSeq: [NM_004382.5](#)

RefSeq Size: 2594 bp

RefSeq ORF: 1248 bp

Locus ID: 1394

UniProt ID: [P34998](#)

Cytogenetics: 17q21.31

Domains: 7tm_2, HormR

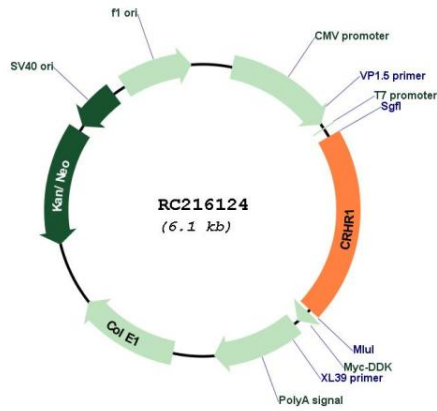
Protein Families: Druggable Genome, GPCR, Transmembrane

Protein Pathways: Long-term depression, Neuroactive ligand-receptor interaction

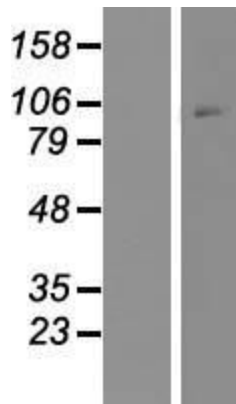
MW: 47.7 kDa

Gene Summary: This gene encodes a G-protein coupled receptor that binds neuropeptides of the corticotropin releasing hormone family that are major regulators of the hypothalamic-pituitary-adrenal pathway. The encoded protein is essential for the activation of signal transduction pathways that regulate diverse physiological processes including stress, reproduction, immune response and obesity. Alternative splicing results in multiple transcript variants. Naturally-occurring readthrough transcription between this gene and upstream GeneID:147081 results in transcripts that encode isoforms that share similarity with the products of this gene. [provided by RefSeq, Aug 2016]

Product images:



Circular map for RC216124



Western blot validation of overexpression lysate (Cat# [LY418036]) using anti-DDK antibody (Cat# [TA50011-100]). Left: Cell lysates from untransfected HEK293T cells; Right: Cell lysates from HEK293T cells transfected with RC216124 using transfection reagent MegaTran 2.0 (Cat# [TT210002]).