

## Product datasheet for **RC216111**

### PCGF3 (NM\_006315) Human Tagged ORF Clone

#### Product data:

|                           |   |
|---------------------------|---|
| Product Type:             | Expression Plasmids   |
| Product Name:             | PCGF3 (NM_006315) Human Tagged ORF Clone                          |
| Tag:                      | Myc-DDK   |
| Symbol:                   | PCGF3   |
| Synonyms:                 | DONG1; RNF3; RNF3A  |
| Mammalian Cell Selection: | Neomycin  |
| Vector:                   | pCMV6-Entry (PS100001)  |
| E. coli Selection:        | Kanamycin (25 ug/mL)  |
| ORF Nucleotide Sequence:  | >RC216111 ORF sequence<br>Red=Cloning site Blue=ORF Green=Tags(s) |

TTTTGTAATACGACTCACTATAGGGCGCCGGGAATTCGTCGACTGGATCCGGTACCGAGGAGATCTGCC  
GCC**CGATCGCC**

ATGTTGACCAGGAAGATCAAGCTGTGGGACATCAACGCCACATCACCTGCCGCCTGTGCAGCGGGTACC  
TCATCGACGCCACCACGGTGACCGAGTGTCTGCACACCTTCTGCAGGAGCTGCCTGGTGAAGTACCTGGA  
GGAGAACAACACCTGCCACCTGCAGGATTGTGATCCACCAGAGCCACCCCTGCAGTACATCGGTCAT  
GACAGAACCATGCAAGATATTGTTTACAAATTGGTACCAGGCCTCAAGAAGCGGAAATGAGAAAGCAGA  
GGGAGTTCTATCAGAAATTGGGCATGGAGGTGCCGGGAGACATCAAGGGGAGACCTGCTCTGCAAAACA  
GCCTTAGATTCCCATCGGAATGGTGAACCAAGCAGACGACAGTTCAAACAAAGAGGCCGCGGAGGAG  
AAGCCGGAGGAGGACAACGACTACCACCGCAGCGACGAGCAGGTGAGCATCTGCCTGGAGTGAACAGCA  
GCAAACTGCGCGGGCTGAAGCGGAAGTGGATCCGCTGCTCAGCCAGGCGACCGTCTTGATCTGAAGAA  
GTTTCATCGCAAAAACTCAACCTTTCATCCTTAACGAGCTGGACATTTATGCAACGAGGAGATCCTG  
GGCAAGGACCACACTCAAGTTCGTGGTTGCTACTAGGTGGAGATTCAAGAAGCGCCGCTCCTGCTGC  
ACTACAGACCCAAGATGGACTTGCTG

**ACGCGT**ACGCGGCCGCTCGAGCAGAACTCATCTCAGAAGAGGATCTGGCAGCAAATGATATCCTGGATT  
ACAAGGATGACGACGATAAGGTTTAA



[View online »](#)

**Protein Sequence:** >RC216111 protein sequence  
 Red=Cloning site Green=Tags(s)

MLTRKIKLWDINAHITCRLCSGYLIDATTVTECLHTFCRSLVKYLEENNTCPTCRIVIHQSHPLQYIGH  
 DRTMQDIVYKLVPLGQEAEMRKQREFYHKLGMVPGDIKGETCSAKQHLDSHRNGETKADDSSNKEAAEE  
 KPEEDNDYHRSDEQVSICLECNSSKLRGLKRWIRCSAQATVLHLKFFIAKKLNLSSFNELDILCNEEIL  
 GKDH TLKFVVVTRWRFKKAPLLLHYRPMKMDLL

TRTRPLEQKLISEEDLAANDILDYKDDDDKV

**Chromatograms:** [https://cdn.origene.com/chromatograms/mk6722\\_g08.zip](https://cdn.origene.com/chromatograms/mk6722_g08.zip)

**Restriction Sites:** SgfI-MluI

**Cloning Scheme:**

Cloning sites used for ORF Shuttling:



\* The last codon before the Stop codon of the ORF

**ACCN:** NM\_006315

**ORF Size:** 726 bp

**OTI Disclaimer:** The molecular sequence of this clone aligns with the gene accession number as a point of reference only. However, individual transcript sequences of the same gene can differ through naturally occurring variations (e.g. polymorphisms), each with its own valid existence. This clone is substantially in agreement with the reference, but a complete review of all prevailing variants is recommended prior to use. [More info](#)

**OTI Annotation:** This clone was engineered to express the complete ORF with an expression tag. Expression varies depending on the nature of the gene.

**Components:** The ORF clone is ion-exchange column purified and shipped in a 2D barcoded Matrix tube containing 10ug of transfection-ready, dried plasmid DNA (reconstitute with 100 ul of water).

**Reconstitution Method:**

1. Centrifuge at 5,000xg for 5min.
2. Carefully open the tube and add 100ul of sterile water to dissolve the DNA.
3. Close the tube and incubate for 10 minutes at room temperature.
4. Briefly vortex the tube and then do a quick spin (less than 5000xg) to concentrate the liquid at the bottom.
5. Store the suspended plasmid at -20°C. The DNA is stable for at least one year from date of shipping when stored at -20°C.

**RefSeq:** [NM\\_006315.6](#)

**RefSeq Size:** 5666 bp

**RefSeq ORF:** 729 bp

**Locus ID:** 10336

**UniProt ID:** [Q3KNV8](#)

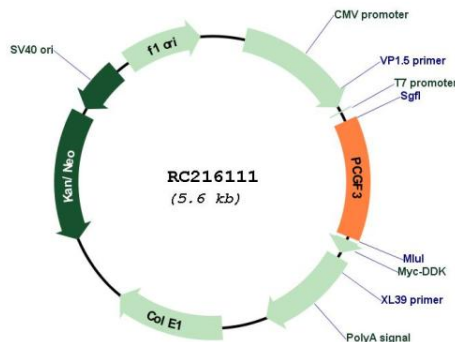
**Cytogenetics:** 4p16.3

**Domains:** RING

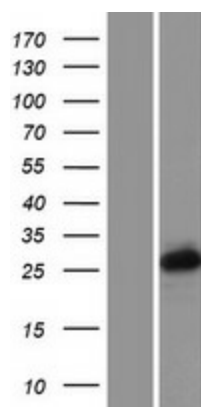
**MW:** 28.1 kDa

**Gene Summary:** The protein encoded by this gene contains a C3HC4 type RING finger, which is a motif known to be involved in protein-protein interactions. The specific function of this protein has not yet been determined. [provided by RefSeq, Jul 2008]

**Product images:**



Circular map for RC216111



Western blot validation of overexpression lysate (Cat# [LY416731]) using anti-DDK antibody (Cat# [TA50011-100]). Left: Cell lysates from untransfected HEK293T cells; Right: Cell lysates from HEK293T cells transfected with RC216111 using transfection reagent MegaTran 2.0 (Cat# [TT210002]).