

Product datasheet for **RC216106**

GLB1 (NM_000404) Human Tagged ORF Clone

Product data:

Product Type:	Expression Plasmids
Product Name:	GLB1 (NM_000404) Human Tagged ORF Clone
Tag:	Myc-DDK
Symbol:	GLB1
Synonyms:	EBP; ELNR1; MPS4B
Mammalian Cell Selection:	Neomycin
Vector:	pCMV6-Entry (PS100001)
E. coli Selection:	Kanamycin (25 ug/mL)



[View online »](#)

ORF Nucleotide
Sequence:

>RC216106 representing NM_000404
Red=Cloning site Blue=ORF Green=Tags(s)

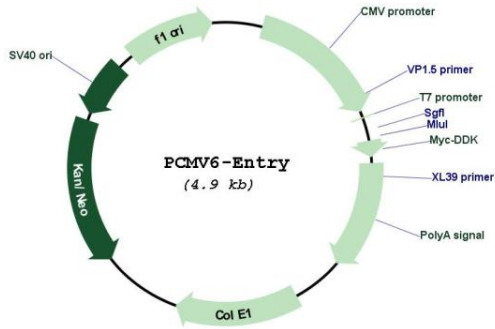
TTTTGTAATACGACTCACTATAGGGCGGCCGGGAATTCGTCGACTGGATCCGGTACCGAGGAGATCTGCC
GCCGCGATCGCC

ATGCCGGGTTCTCTGGTTCGCATCTCCCTCTGCTGCTGGTTCTGCTGCTTCTGGGCCCTACGCGGGCT
TGCGCAATGCCACCCAGAGGATGTTTAAAATTGACTATAGCCGGGACTCCTTCTCAAGGATGGCCAGCC
ATTTTCGTACATCTCAGGAAGCATTCACTACTCCCGTGTGCCCGCTTCTACTGGAAGGACCGGCTGCTG
AAGATGAAGATGGCTGGGCTGAACGCCATCCAGACGTATGTGCCCTGGAACCTTTCATGAGCCCTGGCCAG
GACAGTACCAGTTTTCTGAGGACCATGATGTGGAATATTTTCTCGGCTGGCTCATGAGCTGGGACTGCT
GGTTATCCTGAGGCCCGGCCCTACATCTGTGCAGAGTGGGAAATGGGAGGATTACCTGCTTGGCTGCTA
GAGAAAGAGTCTATTCTTCTCCGCTCCTCCGACCCAGATTACCTGGCAGCTGTGGACAAGTGGTTGGGAG
TCCTTCTGCCAAGATGAAGCCTCCTCTATCAGAATGGAGGGCCAGTTATAACAGTGCAGTTGAAAA
TGAATATGGCAGTACTTTGCCGTGATTTTGACTACCTGCGCTTCTGCAGAAGCGCTTTCGCCACCAT
CTGGGGGATGATGTGGTTCTGTTTACCCTGATGGAGCACATAAAACATTCCTGAAATGTGGGGCCCTGC
AGGGCCTCTACACCACGGTGGACTTTGGAACAGGCAGCAACATCAGAGTCTTTCCTAAGCCAGAGGAA
GTGTGAGCCCAAAGACCTTGATCAATTCTGAATTCTATACTGGCTGGCTAGATCACTGGGGCCAACT
CACTCCACAATCAAGACCGAAGCAGTGGCTTCTCCCTCTATGATATACTGGCCGTGGGGCGAGTGTGA
ACTTGTACATGTTTATAGGTGGGACCAATTTGGCTATTGGAATGGGGCCAACTCACCTATGCAGCACA
GCCACCAGCTACGACTATGATGCCCACTGAGTGAAGCTGGGGACCTCACTGAGAAGTATTTTGTCTGT
CGAAACATCATCCAGAAGTTTAAAAAGTACCAGAAGTCCATCCCTCCATCTACACCAAAGTTTGCAT
ATGGAAAAGTCACTTTGAAAAAGTTAAAGACAGTGGGAGCAGCTCTGGACATTCTGTGTCCCTCTGGGCC
CATCAAAAAGCCTTTATCCCTTGACATTTATCCAGGTGAAACAGCATTATGGGTTTGTGCTGTACCGGACA
ACACTTCTCAAGATTGCAGCAACCCAGCACCTCTCTTCCACCCTCAATGGAGTCCACGATCGAGCAT
ATGTTGCTGTGGATGGGATCCCCAGGGAGTCTTGAGCGAAACAATGTGATCACTCTGAACATAACAGG
GAAAGCTGGAGCCACTCTGGACCTTCTGGTAGAGAACATGGGACGTGTGAACTATGGTGCATATATCAAC
GATTTTAAAGGTTTGGTTTCTAACCTGACTCTCAGTTCCAATATCCTCACGGACTGGACGATCTTCCAC
TGGACACTGAGGATGCAGTGCAGCCACCTGGGGGCTGGGGACACCGTGACAGTGGCCACCATGATGA
AGCCTGGGCCCAACTCATCCAACACACGCTCCCGCCTTTTATATGGGGAATTCTCCATTCCAGT
GGGATCCAGACTTGCCCAAGGACCTTTATCCAGTTTCTGGATGGACCAAGGGCCAGGTCTGGATTA
ATGGCTTTAACCTTGGCCGCTATTGGCCAGCCCGGGCCCTCAGTTGACCTTGTGTGCCCCAGCACAT
CCTGATGACCTCGGCCCAACACCATCACCGTCTGGAAGTGGAGTGGGCACCTGCAGCAGTGTGAT
CCAGAACTATGTGCTGTGACGTTCTGGACAGGCCAGTTATTGGCTCATCTGTGACCTACGATCATCCCT
CCAAAACCTGTTGAAAAAGACTCATGCCCCACCCCGCAAAAAAACAAGATTCATGGCTGGACCATGT

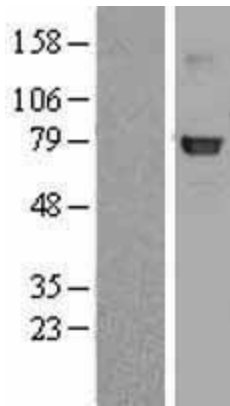
ACGCGTACGCGGCCGCTCGAGCAGAACTCATCTCAGAAGAGGATCTGGCAGCAATGATATCCTGGATT
ACAAGGATGACGACGATAAGGTTTAA

Reconstitution Method:	<ol style="list-style-type: none">1. Centrifuge at 5,000xg for 5min.2. Carefully open the tube and add 100ul of sterile water to dissolve the DNA.3. Close the tube and incubate for 10 minutes at room temperature.4. Briefly vortex the tube and then do a quick spin (less than 5000xg) to concentrate the liquid at the bottom.5. Store the suspended plasmid at -20°C. The DNA is stable for at least one year from date of shipping when stored at -20°C.
RefSeq:	NM_000404.4
RefSeq Size:	2409 bp
RefSeq ORF:	2034 bp
Locus ID:	2720
UniProt ID:	P16278
Cytogenetics:	3p22.3
Domains:	Glyco_hydro_35
Protein Families:	Druggable Genome
Protein Pathways:	Galactose metabolism, Glycosaminoglycan degradation, Glycosphingolipid biosynthesis - ganglio series, Lysosome, Metabolic pathways, Other glycan degradation, Sphingolipid metabolism
MW:	75.9 kDa
Gene Summary:	This gene encodes a member of the glycosyl hydrolase 35 family of proteins. Alternative splicing results in multiple transcript variants, at least one of which encodes a preproprotein that is proteolytically processed to generate the mature lysosomal enzyme. This enzyme catalyzes the hydrolysis of a terminal beta-linked galactose residue from ganglioside substrates and other glycoconjugates. Mutations in this gene may result in GM1-gangliosidosis and Morquio B syndrome. [provided by RefSeq, Nov 2015]

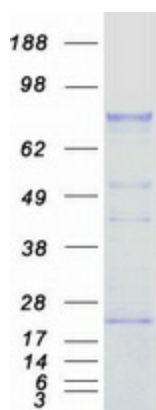
Product images:



Circular map for RC216106



Western blot validation of overexpression lysate (Cat# [LY424740]) using anti-DDK antibody (Cat# [TA50011-100]). Left: Cell lysates from untransfected HEK293T cells; Right: Cell lysates from HEK293T cells transfected with RC216106 using transfection reagent MegaTran 2.0 (Cat# [TT210002]).



Coomassie blue staining of purified GLB1 protein (Cat# [TP316106]). The protein was produced from HEK293T cells transfected with GLB1 cDNA clone (Cat# RC216106) using MegaTran 2.0 (Cat# [TT210002]).