

Product datasheet for **RC216105**

COMMD6 (NM_203495) Human Tagged ORF Clone

Product data:

Product Type: Expression Plasmids
Product Name: COMMD6 (NM_203495) Human Tagged ORF Clone
Tag: Myc-DDK
Symbol: COMMD6
Synonyms: Acrg
Mammalian Cell Selection: Neomycin
Vector: pCMV6-Entry (PS100001)
E. coli Selection: Kanamycin (25 ug/mL)
ORF Nucleotide Sequence: >RC216105 ORF sequence
Red=Cloning site Blue=ORF Green=Tags(s)

TTTTGTAATACGACTCACTATAGGGCGGCCGGAATTCGTCGACTGGATCCGGTACCGAGGAGATCTGCC
GCC**CGATCGCC**

ATGGAGGCGTCCAGCGAGCCGCCGCTGGATGCTAAGTCCGATGTCACCAACCAGCTTGTAGATTTTCAGT
GGAAACTGGGTATGGCTGTGAGCTCAGACACTGCAGATCTCTTAAGTATCCTTACGTTGCAGTGATGCT
AAAAGTGGCAGATCATTAGGCCAAGTAAAGACCAAGTCTTTGAAATGACGATTCCACAGTTTCAGAAT
TTCTACAGACAGTTCAAGGAAATTGCTGCAGTTATTGAAACGGTG

ACGCGTACGCGGCCGCTCGAGCAGAAACTCATCTCAGAAGAGGATCTGGCAGCAAATGATATCCTGGATT
ACAAGGATGACGACGATAAGGTTTAA

Protein Sequence: >RC216105 protein sequence
Red=Cloning site Green=Tags(s)
MEASSEPLDAKSDVTNQLVDFQWKLGMVSSDTCRSLKYPYVAVMLKVADHSGQVKTKCFEMTIPQFQN
FYRQFKEIAAVIETV

TRTRPLEQKLISEEDLAANDILDYKDDDDKV

Chromatograms: https://cdn.origene.com/chromatograms/mk6463_a11.zip

Restriction Sites: Sgfl-MluI



[View online »](#)

Cloning Scheme:


ACCN: NM_203495

ORF Size: 255 bp

OTI Disclaimer: The molecular sequence of this clone aligns with the gene accession number as a point of reference only. However, individual transcript sequences of the same gene can differ through naturally occurring variations (e.g. polymorphisms), each with its own valid existence. This clone is substantially in agreement with the reference, but a complete review of all prevailing variants is recommended prior to use. [More info](#)

OTI Annotation: This clone was engineered to express the complete ORF with an expression tag. Expression varies depending on the nature of the gene.

Components: The ORF clone is ion-exchange column purified and shipped in a 2D barcoded Matrix tube containing 10ug of transfection-ready, dried plasmid DNA (reconstitute with 100 ul of water).

- Reconstitution Method:**
1. Centrifuge at 5,000xg for 5min.
 2. Carefully open the tube and add 100ul of sterile water to dissolve the DNA.
 3. Close the tube and incubate for 10 minutes at room temperature.
 4. Briefly vortex the tube and then do a quick spin (less than 5000xg) to concentrate the liquid at the bottom.
 5. Store the suspended plasmid at -20°C. The DNA is stable for at least one year from date of shipping when stored at -20°C.

RefSeq: [NM_203495.3](#), [NP_987091.1](#)

RefSeq Size: 1695 bp

RefSeq ORF: 258 bp

Locus ID: 170622

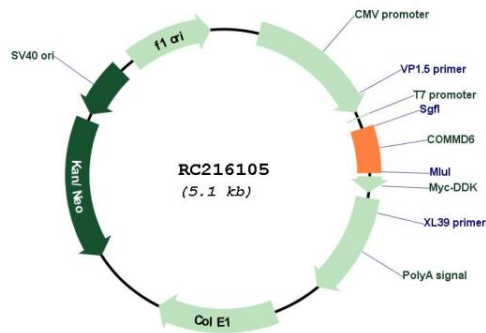
UniProt ID: [Q7Z4G1](#)

Cytogenetics: 13q22.2

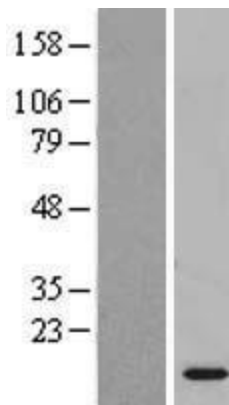
MW: 9.6 kDa

Gene Summary: COMMD6 belongs to a family of NF-kappa-B (see RELA; MIM 164014)-inhibiting proteins characterized by the presence of a COMM domain (see COMMD1; MIM 607238) (de Bie et al., 2006 [PubMed 16573520]).[supplied by OMIM, Mar 2009]

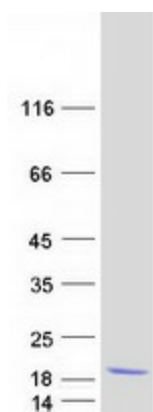
Product images:



Circular map for RC216105



Western blot validation of overexpression lysate (Cat# [LY404247]) using anti-DDK antibody (Cat# [TA50011-100]). Left: Cell lysates from untransfected HEK293T cells; Right: Cell lysates from HEK293T cells transfected with RC216105 using transfection reagent MegaTran 2.0 (Cat# [TT210002]).



Coomassie blue staining of purified COMMD6 protein (Cat# [TP316105]). The protein was produced from HEK293T cells transfected with COMMD6 cDNA clone (Cat# RC216105) using MegaTran 2.0 (Cat# [TT210002]).