

Product datasheet for **RC216103**

GRAMD4 (NM_015124) Human Tagged ORF Clone

Product data:

Product Type:	Expression Plasmids
Product Name:	GRAMD4 (NM_015124) Human Tagged ORF Clone
Tag:	Myc-DDK
Symbol:	GRAMD4
Synonyms:	DIP
Mammalian Cell Selection:	Neomycin
Vector:	pCMV6-Entry (PS100001)
E. coli Selection:	Kanamycin (25 ug/mL)



[View online »](#)

ORF Nucleotide Sequence:

>RC216103 ORF sequence
 Red=Cloning site Blue=ORF Green=Tags(s)

TTTTGTAATACGACTCACTATAGGGCGGCCGGAATTCGTCGACTGGATCCGGTACCGAGGAGATCTGCC
 GCC**CGGATCGCC**

ATGCTAAGGAGGTTGGACAAAATCAGGTTCAAGAGGTCACAAGAGAGATGACTTCCTCGATCTAGCGGAGT
 CTCAAAATGCCTCGGACACCGAATGCAGCGACGAAATCCCCTGAAGGTACCGCGGACCTCGCCCCGGA
 CAGCGAGGAGCTGAGGGACCCTGCTGGTCCAGGGACCCTCATCATGGCCACAGGAGTCCAGGACTTTAAC
 CGGACAGAGTTTGTGACTGAATGAGATCAAAGGTCACCTGGAATTCCTTATTGGAAAAACATTTCT
 TACAGGAGGAGCTCCGGAAGCTGCGAGAAGAAACCAACGCGGAGATGCTGCGGCAGGAGCTGGACCGCA
 GCGGCAGCGGGATGGAGCTGGAGCAGAAGGTGCAGGAGGTGCTGAAGGCCAGAACCGAGGAGCAGATG
 GCTCAGCAGCCCCAAAAGGGCAGGCCAGGCCAGCAATGGAGCAGAGCGCCGGAGCCAGGGGCTGTCT
 CGCGCTCAGAGAAGTGGTCTACGAGCGGTTCCGGGAGTACGTGGAGGACTTCCGGTTCAGCCCGAGGA
 GAACACTGTGGAGACAGAGGAACCCCTGAGCGCCCGCAGGTTAACTGAAAATATGAGACGGCTCAAGCGC
 GGTGCCAAGCCGGTCACTAACTTTGTGAAGAACCTCTCTGCCTTATCCGACTGGTACTCCGTCTACACGT
 CTGCCATTGCCTTACCCTGTACATGAATGCCGTGTGGCATGGCTGGGCCATCCCATTGTTCTTATTCT
 AGCAATTTCTGAGGTTATCCCTCAATTACCTCATCGCCAGGGGGTGGCGGATACAGTGGAGCATCGTGCC
 GAAGTGTCTGAGCCCGTGAACCTCAAAGGAAGACCTGACTGTGTCTGAGAAGTCCAGCTGGTGTCTGG
 ACGTCGCCCAGAAAGCCAGAACCTTTTCGGGAAGATGGCTGACATCCTGGAGAAGATCAAGAATTGTT
 CATGTGGTCCAGCCGGAGATCACACAGAAGCTGTATGTGGCGCTCTGGGCTGCCTTCTGGCCTCTGC
 TTCTTCCCCTACCGCCTGGTGGGCTTGGCGTGGACTATGCTGGTATCAAGTCTTCTCATTGATT
 TCATCTTTAAACGCTGCCCGAGGCTGCGCGCAAGTACGACACGCCCTATATCATCTGGAGGATCTCCC
 CACCGACCCGACGCTCAAGGAGCGCTCCAGCGCCGAGTCTCACGACGGCTGCAGACGACCTCGTACCG
 AGCTACGTACCCAGCGCACCGGCCGCTGGTAAAGAGGAGGACGCGGTCGTTCCACAGCACCAAGA
 AGGGCAATTTCCACGAGATCTTCAATCTGACAGAAAACGAGCGTCCGCTGGCGGTGTGCGAGAATGGCTG
 GCGCTGTGCCTCATCAACAGGGACCGGAAGATGCCACGGACTACATCAGGAACGGGGTCTCTACGTC
 ACGGAGAATTACTTGTGCTTCGAAAGCTCAAATCTGGTCTCAAAGAGGAACAAAGTCAAGCTAG
 TGGACATCAGGACATCCAGAAGTACAAGTCTGTCTGTCTCCAGGCTCAGGCATGGGGATTGCCGT
 GTCGACGCCATCCACCCAGAACCGCTCGTGTGGTGGCATGGTGCACAGGGATGAGGCCTTCGAGACC
 ATTCTCAGCCAGTACATCAAGATCACCTCAGCGGCAGCGTCTGGCGGGGACAGC

ACGCGTACGCGGGCCGCTCGAGCAGAAACTCATCTCAGAAGAGGATCTGGCAGCAAATGATATCCTGGATT
 ACAAGGATGACGACGATAAGGTTTAA

Protein Sequence:

>RC216103 protein sequence
 Red=Cloning site Green=Tags(s)

MLRRLDKIRFRGHRKDDFLDLAESPNSDTECSDEIPLKVPRTSPRDSEELRDPAGPGTLIMATGVQDFN
 RTEFDRLNEIKGHLEIALLEKHFLQEELRKLREETNAEMLRQELDRERQRRMELEQKVQEVLKARTEEQM
 AQQPPKQQAQASNGAERRSQGLSSRLQKWFYERFGEYVEDFRFQPEENTVETEEPLSARRLTENMRRLKR
 GAKPVTNFVKNLSALSDWYSVYTSIAIAFTVYMNAVWHGWAIPFLFLAILRLSLNYLIARGWRIQWSIVP
 EVSEPVPEPKEDLVSEKFLVDVAQKAQNLFGKMAIDILEKIKNLFMWVQPEITQKLYVALWAAFLASC
 FFPYRLVGLAVGLYAGIKFFLIDFIFKRCPLRAKYDTPYIIWRSPTDPLKERSAASVSRRLQTTSSR
 SYVPSAPAGLGKEEDAGRFHSTKKNFHEIFNL TENERPLAVCENGWRCCLINRDRKMPTDYIRNGVLYV
 TENYLCFESSKSGSSKRNVIKLVDITDIQKYKLVSVLPGSGMGI AVSTPSTQKPLVFGAMVHRDEAFET
 ILSQYIKITSAASGGDS

TRTRPLEQKLI SEEDLAANDILDYKDDDDKV

Chromatograms:

https://cdn.origene.com/chromatograms/mk6558_a11.zip

Restriction Sites:

Sgfl-Mlul

Cloning Scheme:


ACCN: NM_015124

ORF Size: 1734 bp

OTI Disclaimer: Due to the inherent nature of this plasmid, standard methods to replicate additional amounts of DNA in E. coli are highly likely to result in mutations and/or rearrangements. Therefore, OriGene does not guarantee the capability to replicate this plasmid DNA. Additional amounts of DNA can be purchased from OriGene with batch-specific, full-sequence verification at a reduced cost. Please contact our customer care team at custsupport@origene.com or by calling 301.340.3188 option 3 for pricing and delivery.

The molecular sequence of this clone aligns with the gene accession number as a point of reference only. However, individual transcript sequences of the same gene can differ through naturally occurring variations (e.g. polymorphisms), each with its own valid existence. This clone is substantially in agreement with the reference, but a complete review of all prevailing variants is recommended prior to use. [More info](#)

OTI Annotation: This clone was engineered to express the complete ORF with an expression tag. Expression varies depending on the nature of the gene.

Components: The ORF clone is ion-exchange column purified and shipped in a 2D barcoded Matrix tube containing 10ug of transfection-ready, dried plasmid DNA (reconstitute with 100 ul of water).

- Reconstitution Method:**
1. Centrifuge at 5,000xg for 5min.
 2. Carefully open the tube and add 100ul of sterile water to dissolve the DNA.
 3. Close the tube and incubate for 10 minutes at room temperature.
 4. Briefly vortex the tube and then do a quick spin (less than 5000xg) to concentrate the liquid at the bottom.
 5. Store the suspended plasmid at -20°C. The DNA is stable for at least one year from date of shipping when stored at -20°C.

Note: Plasmids are not sterile. For experiments where strict sterility is required, filtration with 0.22um filter is required.

RefSeq: [NM_015124.4](#), [NP_055939.1](#)

RefSeq Size: 4337 bp

RefSeq ORF: 1737 bp

Locus ID: 23151

UniProt ID: [Q6IC98](#)

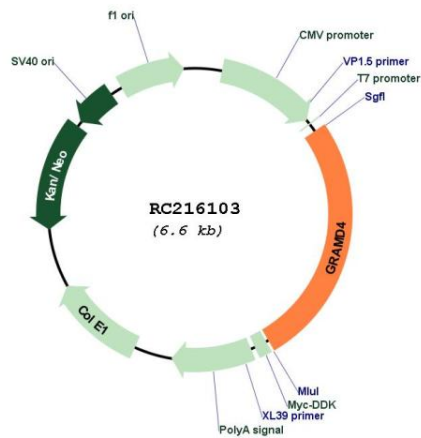
Cytogenetics: 22q13.31

Protein Families: Transmembrane

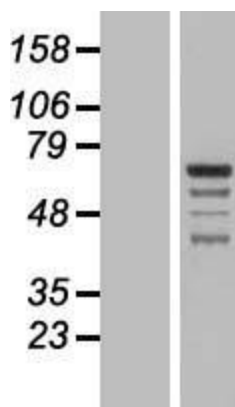
MW: 66.4 kDa

Gene Summary: GRAMD4 is a mitochondrial effector of E2F1 (MIM 189971)-induced apoptosis (Stanelle et al., 2005 [PubMed 15565177]).[supplied by OMIM, Jan 2011]

Product images:



Circular map for RC216103



Western blot validation of overexpression lysate (Cat# [LY414784]) using anti-DDK antibody (Cat# [TA50011-100]). Left: Cell lysates from untransfected HEK293T cells; Right: Cell lysates from HEK293T cells transfected with RC216103 using transfection reagent MegaTran 2.0 (Cat# [TT210002]).