

Product datasheet for **RC216100**

CCT3 (NM_001008800) Human Tagged ORF Clone

Product data:

Product Type:	Expression Plasmids
Product Name:	CCT3 (NM_001008800) Human Tagged ORF Clone
Tag:	Myc-DDK
Symbol:	CCT3
Synonyms:	CCT-gamma; CCTG; PIG48; TCP-1-gamma; TRIC5
Mammalian Cell Selection:	Neomycin
Vector:	pCMV6-Entry (PS100001)
E. coli Selection:	Kanamycin (25 ug/mL)



[View online »](#)

ORF Nucleotide Sequence:

>RC216100 representing NM_001008800
 Red=Cloning site Blue=ORF Green=Tags(s)

TTTTGTAATACGACTCACTATAGGGCGGCCGGAATTCGTCGACTGGATCCGGTACCGAGGAGATCTGCC
 GCC**GCGATCGCC**

ATGATGGCCATCGTCCAGTGCTCGTGCTCAGCCAGAACAAGCGTGAATCCGGAAGAAAAGTTCAAT
 CTGAAAACATCAATGCTGCCAAGATTCAGTCCAGCATCCAGCGCCAAGTCCATGATCGAAATTAGCCG
 GACCCAGGATGAAGAGGTTGGAGATGGGACCACATCAGTAATTATTCTTGCAGGGGAAATGCTGTCTGTA
 GCTGAGCACTTCTGGAGCAGCAGATGCACCCAACAGTGGTGATCAGTGCTTACCGAAGGCATTGGATG
 ATATGATCAGCACCCATAAGAAAATAAGTATCCCAGTCGACATCAGTGACAGTGATATGATGCTGAACAT
 CATCAACAGCTCTATTACTACCAAAGCCATCAGTCGGTGGTCATCTTTGGCTTGCACATTGCCCTGGAT
 GCTGTCAAGATGGTACAGTTTGGAGAGAATGGTCGAAAGAGATTGACATAAAAAATATGCAAGAGTGG
 AAAAGATACCTGGAGGCATCATTGAAGACTCCTGTGTCTTGCCTGGAGTCATGATTAACAAGGATGTGAC
 CCATCCACGTATCGGGCGCTATATCAAGAACCCTCGCATTGTGTGCTGGATTCTTCTCTGGAATACAAG
 AAAGGAGAAAGCCAGACTGACATTGAGATTACACGAGAGGAGGACTTCACCCGAATTCCTCAGATGGAGG
 AAGAGTACATCCAGCAGCTCTGTGAGGACATTATCCAACCTGAAGCCCGATGTGGTCATCACTGAAAAGGG
 CATCTCAGATTTAGCTCAGCACTACCTTATGCGGGCCAATATCACAGCCATCCGCAGAGTCCGGAAGACA
 GACAATAATCGCATTGCTAGAGCCTGTGGGGCCCGGATAGTCAGCCGACCAGAGGAACTGAGAGAAGATG
 ATGTTGGAACAGGAGCAGGCCTGTTGAAAATCAAGAAAATTGGAGATGAATACTTTACTTTCATCACTGA
 CTGCAAAGACCCCAAGGCCTGCACCATCTCCTCCGGGGGCTAGCAAAGAGATTCTCTCGGAAGTAGAA
 CGCAACCTCCAGGATGCCATGCAAGTGTGTCGCAATGTTCTCCTGGACCCTCAGCTGGTCCAGGGGGTG
 GGCCTCCGAGATGGCTGTGGCCATGCCTTGACAGAAAAATCCAAGCCATGACTGGTGTGGAACAATG
 GCCATACAGGGCTGTTGCCAGGCCCTAGAGGTCAATCCTCGTACCCTGATCCAGAAGTGTGGGGCCAGC
 ACCATCCGTCTACTTACCTCCCTTCGGGCAAGCACACCCAGGAGAACTGTGAGACCTGGGGTGAATG
 GTGAGACGGGTACTTTGGTGGACATGAAGGAAGTGGGCATATGGGAGCCATTGGCTGTGAAGCTGCAGAC
 TTATAAGACAGCAGTGGAGACGGCAGTTCTGCTACTGCGAATTGATGACATCGTTTCAGGCCACAAAAAG
 AAAGGCGATGACCAGAGCCGCAAGGGGGGCTCCTGATGCTGGCCAGGAG

ACGCGTACGCGGCCGCTCGAGCAGAAACTCATCTCAGAAGAGGATCTGGCAGCAAATGATATCCTGGATT
 ACAAGGATGACGACGATAAGGTTTAA

Protein Sequence:

>RC216100 representing NM_001008800
 Red=Cloning site Green=Tags(s)

MMGHRPVLVLSQNTKRESGRKVSQGNINAAKIQVQHPAAKSMIEISRTQDEEVGDGTTSVIILAGEMLSV
 AEHFLEQQMHPTVVISAYRKALDDMISTLKKISIPVDISDSMMLNIINSSITTKAISRWSSLACNIALD
 AVKMQVFEENGRKEIDIKKYARVEKIPGGIIEDSCVLRGVMINKDVTHPRMRRYIKNPRIVLLDSSLEYK
 KGESQTDIEITREEDFTRILQMEEYIQQLCEDIIQLKPDVVITEKGISDLAQHYLMRANITAIRRVKRT
 DNNRIARACGARIVSRPEELREDDVGTGAGLLEIKKIGDEYFTFITDCKDPKACTILLRGASKEILSEVE
 RNLQDAMQVCRNVLLDPQLVPGGGASEMAVAHALTEKSKAMTGVEQWPYRAVAQALEVIPRTLIQNCGAS
 TIRLLTSLRAKHTQENCETWGVNGETGLVDMKELGIWEPLAVKLQTYKTAVETAVALLLRIDDIVSGHKK
 KGDDQSRQGGAPDAGQE

TRTRPLEQKLISEEDLAANDILDYKDDDDKV

Chromatograms:

https://cdn.origene.com/chromatograms/mk8064_b04.zip

Restriction Sites:

Sgfl-Mlul

Cloning Scheme:


ACCN: NM_001008800

ORF Size: 1521 bp

OTI Disclaimer: The molecular sequence of this clone aligns with the gene accession number as a point of reference only. However, individual transcript sequences of the same gene can differ through naturally occurring variations (e.g. polymorphisms), each with its own valid existence. This clone is substantially in agreement with the reference, but a complete review of all prevailing variants is recommended prior to use. [More info](#)

OTI Annotation: This clone was engineered to express the complete ORF with an expression tag. Expression varies depending on the nature of the gene.

Components: The ORF clone is ion-exchange column purified and shipped in a 2D barcoded Matrix tube containing 10ug of transfection-ready, dried plasmid DNA (reconstitute with 100 ul of water).

Reconstitution Method:

1. Centrifuge at 5,000xg for 5min.
2. Carefully open the tube and add 100ul of sterile water to dissolve the DNA.
3. Close the tube and incubate for 10 minutes at room temperature.
4. Briefly vortex the tube and then do a quick spin (less than 5000xg) to concentrate the liquid at the bottom.
5. Store the suspended plasmid at -20°C. The DNA is stable for at least one year from date of shipping when stored at -20°C.

RefSeq: [NM_001008800.2](#), [NP_001008800.1](#)

RefSeq Size: 1982 bp

RefSeq ORF: 1524 bp

Locus ID: 7203

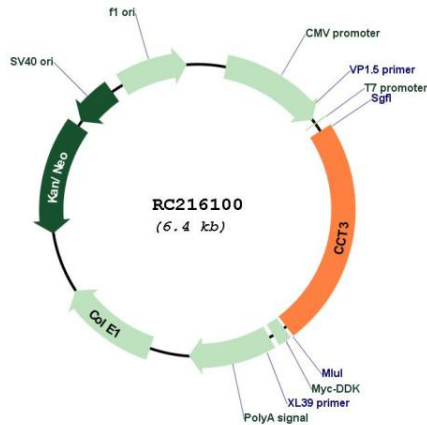
UniProt ID: [P49368](#)

Cytogenetics: 1q22

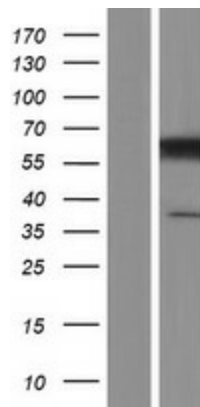
MW: 56.3 kDa

Gene Summary: The protein encoded by this gene is a molecular chaperone that is a member of the chaperonin containing TCP1 complex (CCT), also known as the TCP1 ring complex (TRiC). This complex consists of two identical stacked rings, each containing eight different proteins. Unfolded polypeptides enter the central cavity of the complex and are folded in an ATP-dependent manner. The complex folds various proteins, including actin and tubulin. Alternate transcriptional splice variants have been characterized for this gene. In addition, a pseudogene of this gene has been found on chromosome 8. [provided by RefSeq, Aug 2010]

Product images:



Circular map for RC216100



Western blot validation of overexpression lysate (Cat# [LY423380]) using anti-DDK antibody (Cat# [TA50011-100]). Left: Cell lysates from untransfected HEK293T cells; Right: Cell lysates from HEK293T cells transfected with RC216100 using transfection reagent MegaTran 2.0 (Cat# [TT210002]).