

## Product datasheet for RC216097

### KPI2 (LMTK2) (NM\_014916) Human Tagged ORF Clone

#### Product data:

Product Type:	Expression Plasmids
Product Name:	KPI2 (LMTK2) (NM_014916) Human Tagged ORF Clone
Tag:	Myc-DDK
Symbol:	KPI2
Synonyms:	AATYK2; BREK; cprk; hBREK; KPI-2; KPI2; LMR2; PPP1R100
Mammalian Cell Selection:	Neomycin
Vector:	pCMV6-Entry (PS100001)
E. coli Selection:	Kanamycin (25 ug/mL)
ORF Nucleotide Sequence:	>RC216097 representing NM_014916 Red=Cloning site Blue=ORF Green=Tags(s)

TTTTGTAATACGACTCACTATAGGGCGGCCGGAATTCGTCGACTGGATCCGGTACCGAGGAGATCTGCC  
GCCCGGATCGCC

ATGCCGGGGCCGCGCGCTTGGCGGGAGGCTGCTGCTGCTGCTGCTGGTCTCTGATCGCCGGCAGTG  
CTGGGGCCGCGCCACTTCCGCAACAGGTGCAGGGGAGGCCACCTGCTGCAGAAGTTTCTCATCTTT  
TGTGATCTGTGTGTGCAGTTAATAATATTAATAGTGTTAATTGCAAAGTGTATCCTGCTGTAAG  
GACCCAGAAATAGACTTTAAGGAATTTGAAGATAATTTGATGATGAGATAGATTTACACCACCAGCAG  
AAGACTCCCTCTGTTAGTCCCGAGCAGAGGTCTTCACTTTCACTACCAAATATTTCACTCCAGC  
TCCTCGCAATCCAGCCTTCTGTAGAGGGATTGAAGTCTCAAGTTGCCCGCCACAGTCTAAACTACATA  
CAGGAAATTTGAAATGGCTGGTTTGGAAAGTTCTCTTGGGAGAGATTTACACGGGCACTAGCGTAGCAA  
GAGTACATCGTGAAGGAGTTAAAAGCAAGTGCCAAACCAAGGAACAAGATACTTTTTTGA AAAATGGAGA  
ACCTTACTACATCTTTCAGCATCCAAATATTCTTCAAGTGTGGTGGACAGTGCCTAGAAGCGATTCCCTAC  
CTCCTGGTGTGTTGAGTCTGTGACTTGGGTGACCTGAAGGCGTATCTGCGCAGCGAGCAGGAGCAGATGC  
GGGGGACTCACAGACCATGCTGCTGCAGAGGATGGCGTGCAGGTCGCCGCGGGGCTGGCCGCCATGCA  
CAAGCTGCACTTCTGCACAGTGATTTAGCCCTGCGGAATTGTTTTCTCACCTCCGACTTAAATGTGAAA  
GTGGGAGATTACGGAATAGGATTCAGCAGGTACAAGGAGGATTATTTGAAACAGATGATAAAAAAGTTT  
TCCTCTGCGATGGACTGCTCCAGAATTAGTAACCAAGCTTTCAAGACAGACTGCTAACTGCAGATCAGAC  
TAAGTATAGTAATATCTGGTCTCTGGGTGTGACTTTGGGAGCTTTTTGACAATGCCGCACAGCGGTAT  
TCAAACCTTTCCAACCTAGATGCTCAACCAAGTCATTAGAGAGAGAGACAAAACTCCCGAAGCCCC  
AGCTGGAGCAGCCCTACTCTGATAGATGGTATGAAGTCTTACAGTCTGTTGGCTGTACCAGAAAAAGAG  
ACCCGCGGCTGAAGATGTGCACAGGCTGCTGACTTACCTGCGGCTGCAGAGCCAGCGGACTCAGAGGTC  
GACTTTGAACAGCAGTGAACGCTCTGAAGCCGAACACAACAGCAGAGACTCTCCAACAATGCTGCAT  
TCCAATCTCGACCACTTTGCCAGGGACCGGCTGGGTCTGAAATGGAGGAAGTCTCACCGTGACCGA  
AACCAGCCAGGGCTGAGCTTCGAGTATGTCTGGGAGGCCGCTAAGCACGACCACCTTTCAGGAGCGCAGC



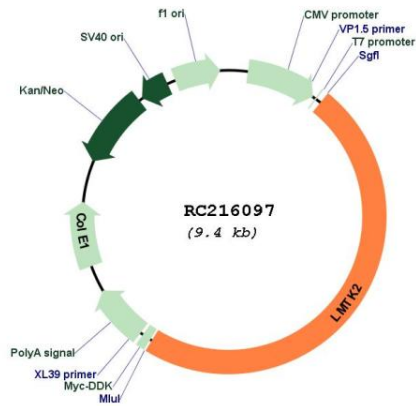
CGGGCCACCTGGACGAAGGCTTGTCTACACGAGCATCTTCTATCCGGTTGAAGTTTTGAGAGTTCGC  
TTTCAGATCCTGGGCCCGAAAGCAAGATGACAGCGGCCAGGATGTCCCCTGAGGGTCCCTGGAGTGGT  
TCCTGTTTTGATGCCCAACCTTTCTGTTGGAAGCGACTATTATCCAGTTAGAAGAAAAAGTGGT  
AGTAACTTGGAGCTTGATTACCCACCAGCGCTGCTCACAACCGACATGGATAATCCAGAAAGGACTGGCC  
CTGAAGTGTCCCAGCTCACGGCGCTCAGGAGCGTTGAACCTGAGGAGTCCAGTACAGATGAGGACTTCTT  
CCAAAGCAGTACAGACCCAAAGACTTAGCTTACCAGGGGACTTACACGTGACCAAGTGGCCCGAGAGC  
CCTTTCAACAATATATTTAATGATGTGGACAAATCGGAAGATTTGCCAGTACCACAAAAATTTCCGACT  
TAATGGAATTAACGGAGTTCAAGCCGACTTTAAACCTGCCACTTTAAGTTCCAGTTTGGATAACCCCAA  
AGAGTCAGTCATAACAGGCCACTTTGAGAAAGAAAGCCCGTAAGATTTTTGACAGTGAGCCTCTCTGC  
CTATCAGATAATCTTATGCACCAAGATAATTTTGATCCATTGAATGTTCAAGAATTGTCAGAAAACCTTTT  
TATTTCTCAAGAGAAAACTTACTAAAAGGCTCATTGTCAGCAAGAACAACATAAATGATCTTCAGAC  
AGAAGTAAAGAATGCTGGTTTTACTGAAGCTATGTTAGAAACGTCATGTAGAAACTCTTTAGATACTGAG  
CTTCAGTTTGTGAAAAAAGCCAGGCATGTCTTTGTTGCAGGAAAACGTAAGCACAAGGGTGACGATA  
CAGATGTCATGCTCACAGGTGACACTTTGAGCACCTATTGCAGTCTTCCCAGAAGTGCAGGTACCTCC  
TACCTCCTTCGAAACAGAAAGAACGCCCGCTCGGGTACCCCGAGACTCACTCCCAACACAGGGAGAAACC  
CAGCCACGTTAGATGTTATTGTCCCGGAGGACTGTCTCCACAGGACATCAGTCCAGACGCTGTGA  
CTGTCCCGGTTGAAATTCTCAACTGATGCCAGAACCACAGCCTGGATAACAGGTCCCAGGACTCTCC  
TGGCGAGAGTGAGGAGACCCTGCGACTACCGAAAGTGACTCTGTTCTTGTGATGACATCCTTGCCAGC  
AGGGTGTAGTGTAGGGAGTGTCTCCCGAACTGGGACAGGAATTGCACAATAAACATTTTCGGAAGACC  
ATCACAGTCATCGCCGGCTAGAGAAAACTTAGAGGCTGTGGAGACTTTAAATCAGCTCAATTTAAAGA  
CGCAGCAAAAGAGCAGGCTTGGTGTCTGCCCTCCTCGGACTCAACAGTCAGGACAGCCTCTGGAG  
GACAGCTTGTGACACCTTCCCAGCCTCTGAGCCGCTCCCTGAAACCCCGGACTCTCTGGAGTCACTGG  
ATGTCACGAAGCGCTACTGGACTTTTAGACTCACACTCCCAGAAACTAGTCCCCCGGATAAGCC  
GGCAGACAGTGGCTACGAAACAGAGAACTTGGAGTCTCCCGAGTGGACCTTGCATCCCGCTCCCGAGGGC  
ACCGCAGACTCAGAACCAGCCACCGGGCATGGCGGCCACAGCGGTCTGCCTCCCAACCCGGTCAATTG  
TCATCTCAGATGCCGGGATGGTCACAGAGGCACAGAAGTGACCCCTGAGACGTTACAGCTGGCTCCCA  
GGGTTCAACCGAGACTTGCCTACTTCTCAGACAATGACTCTGAGCCCGAGAAAAGGTCTGAGGAGGTC  
CCGGGAACCTCCCATCCGCTTGGTGTGGTACAGGAGCAGCCCTACCCGAGCCAGTCTCCCGAGC  
AAAGTCTGCTGCCAGGATAGCTGCCTGGAAGCCAGAAAGGCCAGCCAGATGAAAGTTGTCTGTCTGC  
TTTGCACAACCTCAGTGACCTGGAATTAAGAGCCACGCCGAGCCAGCACAGACTGGTGTCCCCAGCAG  
GTGCATCCCACGAAGACGAGGCCAGCAGTCCCTGGAGTGTGCTGAATGCAGAACTTAGCAGCGGCGATG  
ACTTCGAGACACAGGACGATCGCCCTGCACCCTCGCTTCCACGGGGACCAACACGAACGAACCTTGC  
CTACACCAATTCTGCGTGGACAAGTCCCTGTCCAGCCACTCCGAGGGCCGAAGTTGAAGGAGCCGGAC  
ATCGAAGGGAAGTACCTGGGAAACTCGGGGTGTGAGGATGCTCGACCTCTCAGAGGACGGGATGGATG  
CAGACGAGGAGGACGAAAACAGCGACGACTCGGACGAGGACCTGCGGGCCTTCAACCTGCATAGCCTCAG  
CTCCGAGTCGGAGGACGAGACCGAGCACCCCGTGCCTATCATCTCAGCAACGAGGACGGAAGGCACCTG  
CGGAGTCTGTTGAAAGCCACAGCGGCAATGCCCCGACCCACTGCCCGAGGACTGGAAGAAGGAAAAGA  
AGGCAGTACGTTTTTCGATGATGTACAGTCTACCTGTTTGACCAGGAGACCCCAACAAAGAGCTGGG  
GCCCTGTGGAGGAGAGGGGTGCGGCCCGGACCTGAGCGGCCAGCCAGCCTCAGGCTCTCCCTACCTG  
AGCAGGTGCATCAACTCCGAAAGCTCCACCGACGAAGAAGGTGGTGGCTTTGAGTGGGATGACTTCT  
CCCCAGATCCTTTTATGTCAAAGACAACAAGTAACCTGCTCAGCTCCAAGCCTTCTCCTCAACATCCAA  
GTACTTTTCTCCGCCACCAGCCCGGAGCACGGAGCAGAGCTGGCCGCACTCGGCGCCTTACTCCCGG  
TTCTCCATCTCTCCGCCAACATTGCCAGCTTTTCCCTCACACACCTGACCGACTCGGACATCGAGCAGG  
GCGGAAGCAGCGAAGACGGAGAAAAGGAC

ACGCGTACGCGGCCGCTCGAGCAGAACTCATCTCAGAAGAGGATCTGGCAGCAATGATATCCTGGATT  
ACAAGGATGACGACGATAAGGTTTAA

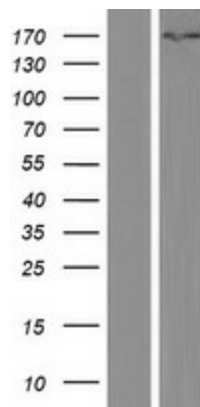


<b>OTI Disclaimer:</b>	The molecular sequence of this clone aligns with the gene accession number as a point of reference only. However, individual transcript sequences of the same gene can differ through naturally occurring variations (e.g. polymorphisms), each with its own valid existence. This clone is substantially in agreement with the reference, but a complete review of all prevailing variants is recommended prior to use. <a href="#">More info</a>
<b>OTI Annotation:</b>	This clone was engineered to express the complete ORF with an expression tag. Expression varies depending on the nature of the gene.
<b>Components:</b>	The ORF clone is ion-exchange column purified and shipped in a 2D barcoded Matrix tube containing 10ug of transfection-ready, dried plasmid DNA (reconstitute with 100 ul of water).
<b>Reconstitution Method:</b>	<ol style="list-style-type: none"><li>1. Centrifuge at 5,000xg for 5min.</li><li>2. Carefully open the tube and add 100ul of sterile water to dissolve the DNA.</li><li>3. Close the tube and incubate for 10 minutes at room temperature.</li><li>4. Briefly vortex the tube and then do a quick spin (less than 5000xg) to concentrate the liquid at the bottom.</li><li>5. Store the suspended plasmid at -20°C. The DNA is stable for at least one year from date of shipping when stored at -20°C.</li></ol>
<b>RefSeq:</b>	<a href="#">NM_014916.4</a>
<b>RefSeq Size:</b>	5602 bp
<b>RefSeq ORF:</b>	4512 bp
<b>Locus ID:</b>	22853
<b>UniProt ID:</b>	<a href="#">Q8IWU2</a>
<b>Cytogenetics:</b>	7q21.3
<b>Domains:</b>	pkinase, TyrKc, S_TKc
<b>Protein Families:</b>	Druggable Genome, Protein Kinase, Transmembrane
<b>MW:</b>	164.92 kDa
<b>Gene Summary:</b>	The protein encoded by this gene belongs to the protein kinase superfamily and the protein tyrosine kinase family. It contains N-terminal transmembrane helices and a long C-terminal cytoplasmic tail with serine/threonine/tyrosine kinase activity. This protein interacts with several other proteins, such as Inhibitor-2 (Inh2), protein phosphatase-1 (PP1C), p35, and myosin VI. It phosphorylates other proteins, and is itself also phosphorylated when interacting with cyclin-dependent kinase 5 (cdk5)/p35 complex. This protein involves in nerve growth factor (NGF)-TrkA signalling, and also plays a critical role in endosomal membrane trafficking. Mouse studies suggested an essential role of this protein in spermatogenesis. [provided by RefSeq, Oct 2009]

Product images:



Circular map for RC216097



Western blot validation of overexpression lysate (Cat# [LY414924]) using anti-DDK antibody (Cat# [TA50011-100]). Left: Cell lysates from untransfected HEK293T cells; Right: Cell lysates from HEK293T cells transfected with RC216097 using transfection reagent MegaTran 2.0 (Cat# [TT210002]).