

Product datasheet for RC216093

MBNL3 (NM_133486) Human Tagged ORF Clone

Product data:

Product Type:	Expression Plasmids
Product Name:	MBNL3 (NM_133486) Human Tagged ORF Clone
Tag:	Myc-DDK
Symbol:	MBNL3
Synonyms:	CHCR; MBLX; MBLX39; MBXL
Mammalian Cell Selection:	Neomycin
Vector:	pCMV6-Entry (PS100001)
E. coli Selection:	Kanamycin (25 ug/mL)
ORF Nucleotide Sequence:	>RC216093 representing NM_133486 Red=Cloning site Blue=ORF Green=Tags(s)

TTTTGTAATACGACTCACTATAGGGCGGCCGGAATTCGTCGACTGGATCCGGTACCGAGGAGATCTGCC
GCC**CGATCGCC**

ATGACGGCTGTCAATGTTGCCCTGATTCGTGATACCAAGTGGCTGACTTTAGAAGTCTGTAGAGAATTTCC
AGAGAGGAACTTGCTCTCGAGCTGATGCAGATTGCAAGTTTGCCCATCCACCAAGAGTTTGCATGTGGA
AAATGGTCGTGTGGTGGCCTGTTTTGATTCTCTAAAGGGTCGGTGTACCCGAGAGAAGTCAAGTACCTT
CACCTCCTCCACTTAAAAACGCAGCTGGAGATTAATGGCGGAACAATCTGATTCAACAGAAGACTG
CCGCAGCCATGTTCCGCCAGCAGATGCAGCTTATGCTCCAAAACGCTCAAATGTCATCACTTGGTTCTTT
TCCTATGACTCCATCAATTCCAGCTAATCCTCCCATGGCTTTCAATCCTTACATACCACATCCTGGGATG
GGCCTCGTTCCTGCAGAACTGTACAAATACACCTGTTCTGATTCTGAAACCCACCTTTGCAATGC
CAGGAGCTGTTGGCCAAAACCTGATGCGTTTCAGATAAACTGGAGGTTTGGCGAGAATTTACAGCGTGGAAA
TTGTACCCGTGGGGAGAATGATTGCCGCTATGCTCACCTACTGATGCTTCCATGATTGAAGCGAGTGAT
AATACTGTGACAATCTGCATGGATTACATCAAAGTTCGATGCTCGCGGGAGAATGCAAGTACTTTTCATC
CTCCTGCACACTTGAAGCCAGACTCAAGGCAGCTCATCATCAGATGAACCATTACAGTGCCTCTGCCAT
GGCTCTGACTAACCTGCAGCTCCACAGCCGGCATTATCCCTGCAGGGCCAATACTGTGCATGGCACCC
GCTTCAAATATTGTGCCATGATGCACGGTGCTACACCTACCCTGTGTCTGCAGCAACAACACCTGCCA
CCAGCGTTCGGTTCGCTGCACCAACTACAGGCAATCAGATACCCCAATTATCAATAGATGAAGTGAATAG
CAGCATGTTTGTTCACAGATG

ACGCGTACGCGGCCGCTCGAGCAGAAAACCTCATCTCAGAAGAGGATCTGGCAGCAAATGATATCCTGGATT
ACAAGGATGACGACGATAAGGTTTAA



[View online »](#)

Protein Sequence: >RC216093 representing NM_133486
Red=Cloning site Green=Tags(s)

MTAVNVALIRDTKWLTLEVCREFQRGTCSRADADCKFAHPPRVCHVENGRVVACFDSLKGRCTRENCKYL
 HPPPHLKTQLEINGRNNLIQQKTAAMFAQQMQLMLQNAQMSSLGSPMTPSIPANPPMAFNPIPHPGM
 GLVPAELVPNTPLVLIIPGNPPLAMPGAVGPKLMRSKLEVCREFQRGNCTRGENDCRYAHPTDASMIEASD
 NTVTICMDYIKGRCSREKCKYFHPPAHLQARLKAHHQMNHSAASAMALTNLQLPQPAFIPAGPILCMAP
 ASNIVPMMHGATPTTVAATTPATSVPF AAPTGTGNQIPQLSIDELNSSMFVSQM

TRTRPLEQKLISEEDLAANDILDYKDDDDKV

Chromatograms: https://cdn.origene.com/chromatograms/ja1276_b07.zip

Restriction Sites: SgfI-MluI

Cloning Scheme:

Cloning sites used for ORF Shuttling:



* The last codon before the Stop codon of the ORF

ACCN: NM_133486

ORF Size: 1002 bp

OTI Disclaimer: The molecular sequence of this clone aligns with the gene accession number as a point of reference only. However, individual transcript sequences of the same gene can differ through naturally occurring variations (e.g. polymorphisms), each with its own valid existence. This clone is substantially in agreement with the reference, but a complete review of all prevailing variants is recommended prior to use. [More info](#)

OTI Annotation: This clone was engineered to express the complete ORF with an expression tag. Expression varies depending on the nature of the gene.

Components: The ORF clone is ion-exchange column purified and shipped in a 2D barcoded Matrix tube containing 10ug of transfection-ready, dried plasmid DNA (reconstitute with 100 ul of water).

Reconstitution Method:

1. Centrifuge at 5,000xg for 5min.
2. Carefully open the tube and add 100ul of sterile water to dissolve the DNA.
3. Close the tube and incubate for 10 minutes at room temperature.
4. Briefly vortex the tube and then do a quick spin (less than 5000xg) to concentrate the liquid at the bottom.
5. Store the suspended plasmid at -20°C. The DNA is stable for at least one year from date of shipping when stored at -20°C.

RefSeq: [NM_133486.2](#), [NP_597846.1](#)

RefSeq Size: 1575 bp

RefSeq ORF: 1005 bp

Locus ID: 55796

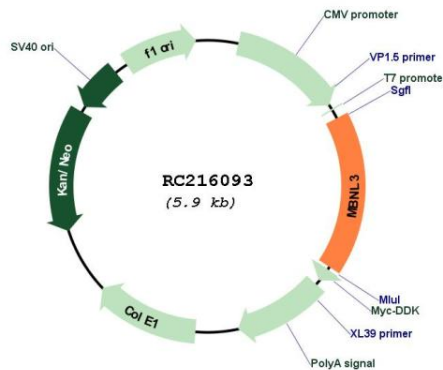
UniProt ID: [Q9NUK0](#)

Cytogenetics: Xq26.2

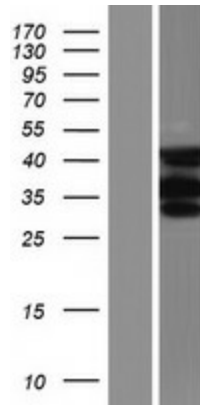
MW: 36.2 kDa

Gene Summary: This gene encodes a member of the muscleblind-like family of proteins. The encoded protein may function in regulation of alternative splicing and may play a role in the pathophysiology of myotonic dystrophy. Alternatively spliced transcript variants have been described. [provided by RefSeq, Dec 2009]

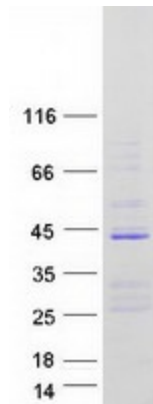
Product images:



Circular map for RC216093



Western blot validation of overexpression lysate (Cat# [LY408817]) using anti-DDK antibody (Cat# [TA50011-100]). Left: Cell lysates from untransfected HEK293T cells; Right: Cell lysates from HEK293T cells transfected with RC216093 using transfection reagent MegaTran 2.0 (Cat# [TT210002]).



Coomassie blue staining of purified MBNL3 protein (Cat# [TP316093]). The protein was produced from HEK293T cells transfected with MBNL3 cDNA clone (Cat# RC216093) using MegaTran 2.0 (Cat# [TT210002]).