

Product datasheet for **RC216088**

ATG4C (NM_032852) Human Tagged ORF Clone

Product data:

Product Type:	Expression Plasmids
Product Name:	ATG4C (NM_032852) Human Tagged ORF Clone
Tag:	Myc-DDK
Symbol:	ATG4C
Synonyms:	APG4-C; APG4C; AUTL1; AUTL3
Mammalian Cell Selection:	Neomycin
Vector:	pCMV6-Entry (PS100001)
E. coli Selection:	Kanamycin (25 ug/mL)



[View online »](#)

ORF Nucleotide Sequence:

>RC216088 representing NM_032852
 Red=Cloning site Blue=ORF Green=Tags(s)

TTTTGTAATACGACTCACTATAGGGCGGCCGGAATTCGTCGACTGGATCCGGTACCGAGGAGATCTGCC
 GCC**CGCATCGCC**

ATGGAGGCTACAGGAACAGATGAAGTTGACAAGCTAAAAACCAATTTATATCTGCTTGGAAACAACATGA
 AATATAGTTGGGTGTTGAAAACAAGACGTATTTTAGTAGAAATTCCTCTGTATTATTGCTTGGAAAATG
 TTACCATTTTAAATATGAAGATGAAGATAAACGTTACCTGCAGAGTCGGGATGTACAATAGAGGATCAC
 GTAATTGCAGGAAATGTAGAAGAATTCGTAAGATTTTCTTTCTAGAATATGGCTGACCTACAGGGAAG
 AATTCCTCAAATAGAAGGCTCAGCTTTGACAACAGACTGTGGGTGGGCTGCACATTGAGAAGTGGCA
 GATGCTCTGGCTCAAGGACTCACTACACTTTCTTGGTAGAGCTTGGACCTGGCCTGATGCTTTGAAT
 ATTGAAAATTCAGACTCTGAATCATGGACTTCCACACTGTCAAAAAATTTACTGCATCATTGAAGCAT
 CACTTTCAGGGGAAAGAGAATTCAAAACCCAACAATTTCTCTGAAGGAAACAATTGGGAAATTTCTGA
 TGATCATGAAATGCGAAATGAAGTTTATCATAGGAAAATCATCTCTTGGTTTGGTGATCCCCCTTGGCT
 CTTTTTGGCTTACATCAACTAATAGAATATGGAAGAAGTCTGGGAAAAAGCAGGAGATTGGTATGGAC
 CAGCTGTGGTTGCTCACATTTTAAAGAAAAGCAGTTGAAGAAGCAAGGCATCCTGATTTACAAGGAATAAC
 TATTTATGTTGCACAAGATTGTACAGTTTACAATCTGATGTAATTGATAAACAGAGTGCTTCCATGACT
 TCTGATAATGCAGATGACAAAGCTGTTATTATTCTAGTTCCTGTTAGACTTGGTGAGAAAGAACCAACA
 CCGACTACTTAGAATTTGTGAAGGATTTTAAAGCCTGGAATATTGTGTGGGATTTATTGGTGGCAAACC
 TAAACAGTCATATTACTTTGCTGGATTTCAAGATGACAGTTTGATTTACATGGATCCTCATTACTGCCAA
 TCTTTTGTAGATGTCAGCATAAAGGATTTCCCTCTTGAGACATCCACTGCCCTTCTCCAAAAAGATGT
 CTTTTCGAAAAATGGATCCCAGCTGTACAATAGGATTTTACTGTGAAAATGTTTCAGGACTTCAAACGAGC
 TTCTGAAGAAAATCACAAGATGCTGAAATTTTCTTCTAAGGAGAAAATATCCCTTATTACTTTTGAAT
 GGTCAATCCAGAGACTATGATTTTACATCTACTACAACCAATGAAGAAGACCTTTTTTTCAGAGGATGAAA
 AGAAAACAATTAAGGATTTAGCACGGAAGAGTTGTCTTGCTT

ACGCGTACGCGGCCGCTCGAGCAGAACTCATCTCAGAAGAGGATCTGGCAGCAAATGATATCCTGGATT
 ACAAGGATGACGACGATAAGGTTTAA

Protein Sequence:

>RC216088 representing NM_032852
 Red=Cloning site Green=Tags(s)

MEATGTDEVDKLTKEFISAWNNMYSWVLKTKTYFSRNSPVLLLKCYHFKYEDEDKTLPAESGCTIEDH
 VIAGNVEEFRKDFISRIWLTYYEEFPQIEGSALTTDCGWGCTLRGQMLLAQGLILHFLGRAWTWPDALN
 IENSSESWSHTVKKFTASFEASLSGEREFKPTISLKETIGKYSDDHEMRNEVYHRKIIISWFGDSPLA
 LFGLHQLIEYGKKS GKAGDWYGPVVAHILRKAVEEARHPDLQGITIYVAQDCTVYNSVDIDKQSASMT
 SDNADDKAVIILVPVRLGGERTNTDYLFVKGILSLEYCVGIIGGKPKQSYFFAGFQDDSLIYMDPHYCQ
 SFVDVSIKDFPLETFHCPSPKMSFRKMDPSCTIGFYCRNVQDFKRASEEITKMLKFSSEKELYPLFTFVN
 GHSRDYDFTSTTTNEEDLFSSEDEKKQLKRFSTEEFVLL

TRTRPLEQKLISEEDLAANDILDYKDDDDKV

Chromatograms:

https://cdn.origene.com/chromatograms/mg2465_d01.zip

Restriction Sites:

Sgfl-Mlul

Cloning Scheme:


ACCN: NM_032852

ORF Size: 1374 bp

OTI Disclaimer: The molecular sequence of this clone aligns with the gene accession number as a point of reference only. However, individual transcript sequences of the same gene can differ through naturally occurring variations (e.g. polymorphisms), each with its own valid existence. This clone is substantially in agreement with the reference, but a complete review of all prevailing variants is recommended prior to use. [More info](#)

OTI Annotation: This clone was engineered to express the complete ORF with an expression tag. Expression varies depending on the nature of the gene.

Components: The ORF clone is ion-exchange column purified and shipped in a 2D barcoded Matrix tube containing 10ug of transfection-ready, dried plasmid DNA (reconstitute with 100 ul of water).

- Reconstitution Method:**
1. Centrifuge at 5,000xg for 5min.
 2. Carefully open the tube and add 100ul of sterile water to dissolve the DNA.
 3. Close the tube and incubate for 10 minutes at room temperature.
 4. Briefly vortex the tube and then do a quick spin (less than 5000xg) to concentrate the liquid at the bottom.
 5. Store the suspended plasmid at -20°C. The DNA is stable for at least one year from date of shipping when stored at -20°C.

RefSeq: [NM_032852.4](#)

RefSeq Size: 1822 bp

RefSeq ORF: 1377 bp

Locus ID: 84938

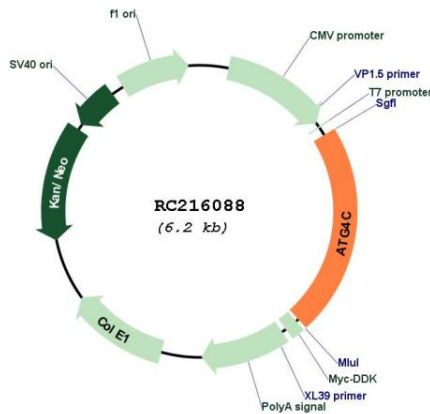
UniProt ID: [Q96DT6](#)

Cytogenetics: 1p31.3

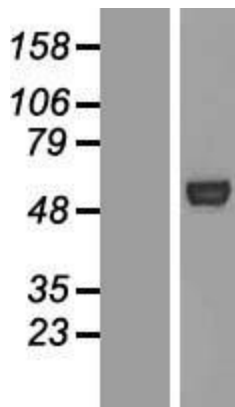
Domains: Peptidase_C54
Protein Families: Protease
Protein Pathways: Regulation of autophagy
MW: 52.3 kDa

Gene Summary: Autophagy is the process by which endogenous proteins and damaged organelles are destroyed intracellularly. Autophagy is postulated to be essential for cell homeostasis and cell remodeling during differentiation, metamorphosis, non-apoptotic cell death, and aging. Reduced levels of autophagy have been described in some malignant tumors, and a role for autophagy in controlling the unregulated cell growth linked to cancer has been proposed. This gene encodes a member of the autophagin protein family. The encoded protein is also designated as a member of the C-54 family of cysteine proteases. Alternate transcriptional splice variants, encoding the same protein, have been characterized. [provided by RefSeq, Jul 2008]

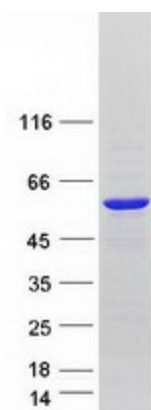
Product images:



Circular map for RC216088



Western blot validation of overexpression lysate (Cat# [LY409886]) using anti-DDK antibody (Cat# [TA50011-100]). Left: Cell lysates from untransfected HEK293T cells; Right: Cell lysates from HEK293T cells transfected with RC216088 using transfection reagent MegaTran 2.0 (Cat# [TT210002]).



Coomassie blue staining of purified ATG4C protein (Cat# [TP316088]). The protein was produced from HEK293T cells transfected with ATG4C cDNA clone (Cat# RC216088) using MegaTran 2.0 (Cat# [TT210002]).