

Product datasheet for **RC216079**

EZH2 (NM_152998) Human Tagged ORF Clone

Product data:

Product Type:	Expression Plasmids
Product Name:	EZH2 (NM_152998) Human Tagged ORF Clone
Tag:	Myc-DDK
Symbol:	EZH2
Synonyms:	ENX-1; ENX1; EZH2b; KMT6; KMT6A; WVS; WVS2
Mammalian Cell Selection:	Neomycin
Vector:	pCMV6-Entry (PS100001)
E. coli Selection:	Kanamycin (25 ug/mL)



[View online »](#)

ORF Nucleotide
Sequence:

>RC216079 representing NM_152998
Red=Cloning site Blue=ORF Green=Tags(s)

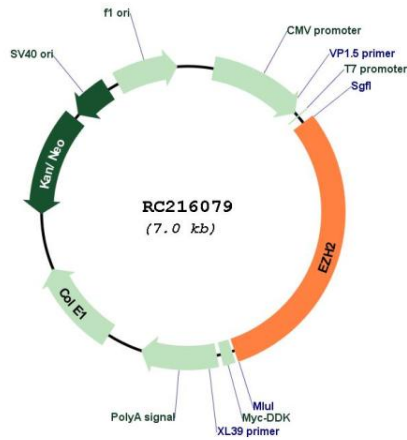
TTTTGTAATACGACTCACTATAGGGCGGCCGGAATTCGTCGACTGGATCCGGTACCGAGGAGATCTGCC
GCCGCGATCGCC

ATGGGCCAGACTGGGAAGAAATCTGAGAAGGGACCAGTTTGTGGCGGAAGCGTGTAAAATCAGAGTACA
TGGCGACTGAGACAGCTCAAGAGGTTTCAGACGAGCTGATGAAGTAAAGAGTATGTTTAGTTCCAATCGTCA
GAAAATTTTGGAAAGAACGGAATCTTAAACCAAGAATGGAAACAGCGAAGGATACAGCCTGTGCACATC
CTGACTTCTGTGAGCTCATTGCGCGGGACTAGGGAGGTGGAAGATGAAACTGTTTTACATAACATTCCTT
ATATGGGAGATGAAGTTTATAGTCAGGATGGTACTTTCATTGAAGAATAATAAAAAATTATGATGGGAA
AGTACACGGGGATAGAGAATGTGGGTTTATAAATGATGAAATTTTGTGGAGTTGGTGAATGCCCTTGGT
CAATATAATGATGATGACGATGATGATGATGGAGACGATCCTGAAGAAAGAGAAGAAAAGCAGAAAGATC
TGGAGGATCACCGAGATGATAAAGAAAGCCGCCACCTCGGAAATTTCTTCTGATAAAAATTTTGAAGC
CATTTCTCAATGTTTCCAGATAAGGGCACAGCAGAAGAACTAAAGGAAAAATATAAAGAACTCACCGAA
CAGCAGCTCCCAGGCGCACTTCCCTCTGAATGTACCCCAACATAGATGGACCAATGCTAAATCTGTTC
AGAGAGAGCAAAGCTTACACTCCTTTCATACGCTTTTCTGTAGGCGATGTTTTAAATATGACTGCTTCT
ACATCCTTTTCATGCAACACCCAACACTTATAAGCGGAAGAACACAGAAACAGCTCTAGACAACAAACCT
TGTGGACCACAGTGTACCAGCATTTGGAGGGAGCAAAGGAGTTTGTCTGCTGCTCTACCGCTGAGCGGA
TAAAGACCCCAACAAACGTCCAGGAGGCCGAGAAGAGGACGGCTTCCCAATAACAGTAGCAGGCCAG
CACCCCAACCATTAATGTGCTGGAATCAAAGGATACAGACAGTATAGGGAAGCAGGGACTGAAACGGGG
GGAGAGAACAATGATAAAGAAGAAGAAGAGAAGAAAGATGAAACTTCGAGCTCCTCTGAAGCAAAATCTC
GGTGTCAAACACCAATAAAGATGAAGCCAAATATTGAACCTCTGAGAATGTGGAGTGGAGTGGTCTGA
AGCCTCAATGTTTAGAGTCCTCATTGGCACTTACTATGACAATTTCTGTGCCATTGCTAGGTTAATTGGG
ACCAAAACATGTAGACAGGTGTATGAGTTTAGAGTCAAAGAATCTAGCATCATAGCTCCAGCTCCCCTG
AGGATGTGGATACTCCTCCAAGGAAAAAGAAGAGGAAACACCGGTTGTGGGCTGCACACTGCAGAAAGAT
ACAGCTGAAAAAGGACGGCTCCTCTAACCATGTTTACAACATCAACCCTGTGATCATCCACGGCAGCCT
TGTGACAGTTCGTGCCCTTGTGTGATAGCACAAAATTTTGTGAAAAGTTTTGTCAATGTAGTTCAGAGT
GTCAAACCGCTTCCGGGATGCCGCTGCAAAGCACAGTGAACACCAAGCAGTGCCCGTGTACCTGGC
TGTCCGAGAGTGTGACCCTGACCTCTGTCTTACTTGTGGAGCCGCTGACCATTGGGACAGTAAAAATGTG
TCCTGCAAGAAGTGCAGTATTCAGCGGGCTCCAAAAAGCATCTATTGCTGGCACCATCTGACGTGGCAG
GCTGGGGGATTTTATCAAAGATCCTGTGCAGAAAAATGAATTCATCTCAGAATACTGTGGAGAGATTAT
TTCTCAAGATGAAGCTGACAGAAGAGGGAAAGTGTATGATAAATACATGTGCAGCTTTCTGTTCAACTTG
AACAAATGATTTTGTGGTGGATGCAACCCGCAAGGGTAACAAAATTCGTTTTGCAAATCATTCCGTAATC
CAAAGTGCATGCAAAAGTTATGATGGTTAACGGTGATCACAGGATAGGTATTTTGGCAAGAGAGCCAT
CCAGACTGGCGAAGAGCTGTTTTTTGATTACAGATACAGCCAGGCTGATGCCCTGAAGTATGTCCGCATC
GAAAGAGAAATGGAAATCCCT

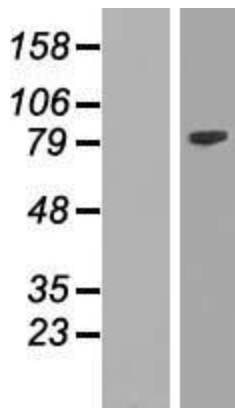
ACGCGTACGCGGCCGCTCGAGCAGAACTCATCTCAGAAGAGGATCTGGCAGCAAATGATATCCTGGATT
ACAAGGATGACGACGATAAGGTTTAA

Components:	The ORF clone is ion-exchange column purified and shipped in a 2D barcoded Matrix tube containing 10ug of transfection-ready, dried plasmid DNA (reconstitute with 100 ul of water).
Reconstitution Method:	<ol style="list-style-type: none">1. Centrifuge at 5,000xg for 5min.2. Carefully open the tube and add 100ul of sterile water to dissolve the DNA.3. Close the tube and incubate for 10 minutes at room temperature.4. Briefly vortex the tube and then do a quick spin (less than 5000xg) to concentrate the liquid at the bottom.5. Store the suspended plasmid at -20°C. The DNA is stable for at least one year from date of shipping when stored at -20°C.
RefSeq:	<u>NM_152998.3</u>
RefSeq Size:	2563 bp
RefSeq ORF:	2124 bp
Locus ID:	2146
UniProt ID:	<u>Q15910</u>
Cytogenetics:	7q36.1
Domains:	myb_DNA-binding, SET, Dnaj
Protein Families:	Druggable Genome, Transcription Factors
MW:	80.9 kDa
Gene Summary:	This gene encodes a member of the Polycomb-group (PcG) family. PcG family members form multimeric protein complexes, which are involved in maintaining the transcriptional repressive state of genes over successive cell generations. This protein associates with the embryonic ectoderm development protein, the VAV1 oncoprotein, and the X-linked nuclear protein. This protein may play a role in the hematopoietic and central nervous systems. Multiple alternatively spliced transcript variants encoding distinct isoforms have been identified for this gene. [provided by RefSeq, Feb 2011]

Product images:



Circular map for RC216079



Western blot validation of overexpression lysate (Cat# [LY407239]) using anti-DDK antibody (Cat# [TA50011-100]). Left: Cell lysates from untransfected HEK293T cells; Right: Cell lysates from HEK293T cells transfected with RC216079 using transfection reagent MegaTran 2.0 (Cat# [TT210002]).