

Product datasheet for **RC216077**

ZNF320 (NM_207333) Human Tagged ORF Clone

Product data:

| | |
|---------------------------|---|
| Product Type: | Expression Plasmids |
| Product Name: | ZNF320 (NM_207333) Human Tagged ORF Clone |
| Tag: | Myc-DDK |
| Symbol: | ZNF320 |
| Synonyms: | ZFPL |
| Mammalian Cell Selection: | Neomycin |
| Vector: | pCMV6-Entry (PS100001) |
| E. coli Selection: | Kanamycin (25 ug/mL) |



[View online »](#)

ORF Nucleotide Sequence:

>RC216077 ORF sequence
 Red=Cloning site Blue=ORF Green=Tags(s)

TTTTGTAATACGACTCACTATAGGGCGGCCGGAATTCGTCGACTGGATCCGGTACCGAGGAGATCTGCC
 GCC**CGGATCGCC**

ATGGCTCTTTCTCAGGGTCTACTGACATTCAGGGATGTGGCCATAGAATTCTCTCAGGAGGAGTGAAAT
 GCCTGGACCCCTGCTCAGAGGACTCTATACAGAGACGTGATGCTGGAGAATTATAGGAACCTGGTCTCCCT
 GGATATCTCTTCCAAATGCATGATGAATACATTGTCATCAACAGGGCAAGGCAATACAGAAGTGATCCAC
 ACAGGGACATTGCAGAGACAAGCAAGTTATCACATTGGAGCATTGCTCCAGGAAATTGAGAAAGACA
 TTCATGACTTTGTGTTTCAGTGGCAAGAAGATGAAACAAATGACCATGAAGCACCCATGACAGAAATAA
 AAAGTTGACTAGTAGTACAGACCGATATGATCAAAGGCATGCTGGAAACAAGCCTATTAAGGTCAGCTT
 GAATCAAGATTTCAATTTGCATTTGCGAAGACATAGGAGAATTCATACTGGAGAGAAACCTTACAAATGTG
 AAGAATGTGAGAAAGTTTCAGTTGCAAAATCACATCTTGAATACATAGGATAATTCATACTGGAGAGAA
 ACCATACAAATGTAAGGTTTGCACAAGGCTTTAAGCATGATTCACACCTGGCAAACATACTAGAAAT
 CACAGGGGAGACAAACATTACACATGTAATGAATGTGGCAAGGTTTTTGATCAAAAAGCAACCCCTTCAT
 GTCATCATAGAAGTCATACTGGAGAGAAACCTTATAAGTGAATGAGTGTGGCAAGACCTTTAGTCAGAC
 ATCACACCTTGTGTACCATCATAGACTGCATACTGGAGAGAAACCTTACAAATGTAATGAGTGTGGCAAG
 ACCTTCGCTCGAAATTCAGTCCCTCGTAATTCATAAGGCAGTTCATACTGCAGAGAAACCCATAAGTGTA
 ATGAATGTGGCAAGGTTTTAAGCAACGAGCAACTCTTGAGGACATCGTAGAGTTCACACTGGAGAGAA
 ACCTTACAGATGTGAAGAATGCGACAAAGTTTTAGTTCGCAATCACATCTTGAAGACATAGGAGGATT
 CATACTGGAGAGAAACCATACAAATGTAAGGTTTGTGACAAGGCTTTCCGGAGTGATTCAGTCTTGCAG
 AACATCAGAGAGTTCATACTGGAGAGAGACCTTACACATGTAATGAATGTGGCAAGGTTTTAGTACAAA
 AGCGTACCTCGCATGTCATCAAAAACCTTACTGGAGAGAAACCTTACGAATGTGAAGAATGTGACAAA
 GTTTACATTTCGCAATCACACCTTGAAGACATAGGAGGATTCATACAGGAGAGAAACCTCACAAGTGTG
 GTGATTGTGGTAAAGCCTTTAATTCACCTTACACCTTATTAGGCATCAGAGAATCCATACTGGACAGAA
 ATCTTACAAATGTCATCAGTGTGGCAAGGCTTTAGTCTGAGGTCACCTTGCAGAACATCAGAAAATT
 CCTTTGGAGACAATTGTTTCAAGTGAATGAGTATAGCAAACCATCAAGCATTAAT

ACGCGTACGCGGCCGCTCGAGCAGAAACTCATCTCAGAAGAGGATCTGGCAGCAATGATATCCTGGATT
 ACAAGGATGACGACGATAAGGTTTAA

Protein Sequence:

>RC216077 protein sequence
 Red=Cloning site Green=Tags(s)

MALSQLLTFRDVAIEFSQEWEKCLDPAQRTL YRDVMLENYRNLVSLDISKCMNTLSSTGQGNTVEVIH
 TGTLQRQASYHIGAFCSQEIEKDIHDFVFQWQDETDNDHEAPMTEIKKLSSTDRYDQRHAGNPKIKGQL
 ESRFHLHLRRHRIHTGEKPYKCECEKVF SCKSHLEIHRRIHTGEKPYKCKVCDKAFKHDShLAKHTRI
 HRGDKHYTCNECGKVFQKATLACHRSHTGEKPYKNECGKTF SQTSHLVYHRLHTGEKPYKNECGK
 TFARNSVLVIHKAVHTAEKPYKNECGKVFQKRALAGHRRVHTGEKPYRCEEDKVF SRKSHLERHRI
 HTGEKPYKCKVCDKAFRSDSRLAEHQRVHTGERPYTCNECGKVFSTKAYLACHQKLHTGEKLYECEEDK
 VYIRKSHLERHRIHTGEKPHKCGDCGKAFNSPSHLIRHQRIHTGQKSYKCHQCGKVFSLRSLLAHQKI
 PFGDNCFKNEYSKPSSIN

TRTRPLEQKLISEEDLAANDILDYKDDDDKV

Chromatograms:

https://cdn.origene.com/chromatograms/mk6440_b11.zip

Restriction Sites:

Sgfl-Mlul

Cloning Scheme:


ACCN: NM_207333

ORF Size: 1527 bp

OTI Disclaimer: The molecular sequence of this clone aligns with the gene accession number as a point of reference only. However, individual transcript sequences of the same gene can differ through naturally occurring variations (e.g. polymorphisms), each with its own valid existence. This clone is substantially in agreement with the reference, but a complete review of all prevailing variants is recommended prior to use. [More info](#)

OTI Annotation: This clone was engineered to express the complete ORF with an expression tag. Expression varies depending on the nature of the gene.

Components: The ORF clone is ion-exchange column purified and shipped in a 2D barcoded Matrix tube containing 10ug of transfection-ready, dried plasmid DNA (reconstitute with 100 ul of water).

- Reconstitution Method:**
1. Centrifuge at 5,000xg for 5min.
 2. Carefully open the tube and add 100ul of sterile water to dissolve the DNA.
 3. Close the tube and incubate for 10 minutes at room temperature.
 4. Briefly vortex the tube and then do a quick spin (less than 5000xg) to concentrate the liquid at the bottom.
 5. Store the suspended plasmid at -20°C. The DNA is stable for at least one year from date of shipping when stored at -20°C.

RefSeq: [NM_207333.3](#)

RefSeq Size: 6145 bp

RefSeq ORF: 1530 bp

Locus ID: 162967

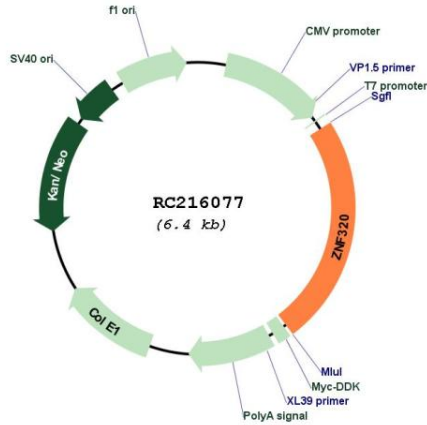
UniProt ID: [A2RRD8](#)

Cytogenetics: 19q13.41

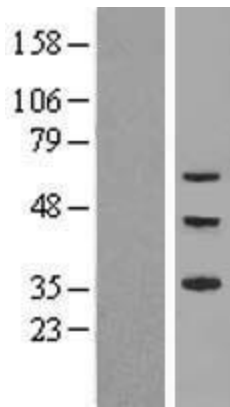
MW: 59.3 kDa

Gene Summary: ZNF320 encodes a Kruppel-like zinc finger protein. Members of this protein family are involved in activation or repression of transcription.[supplied by OMIM, Jul 2002]

Product images:



Circular map for RC216077



Western blot validation of overexpression lysate (Cat# [LY403960]) using anti-DDK antibody (Cat# [TA50011-100]). Left: Cell lysates from untransfected HEK293T cells; Right: Cell lysates from HEK293T cells transfected with RC216077 using transfection reagent MegaTran 2.0 (Cat# [TT210002]).