

## Product datasheet for RC216074

### FMN1 (NM\_001103184) Human Tagged ORF Clone

#### Product data:

Product Type:	Expression Plasmids
Product Name:	FMN1 (NM_001103184) Human Tagged ORF Clone
Tag:	Myc-DDK
Symbol:	FMN1
Synonyms:	FMN; LD
Mammalian Cell Selection:	Neomycin
Vector:	pCMV6-Entry (PS100001)
E. coli Selection:	Kanamycin (25 ug/mL)
ORF Nucleotide Sequence:	>RC216074 representing NM_001103184 Red=Cloning site Blue=ORF Green=Tags(s)

TTTTGTAATACGACTCACTATAGGGCGGCCGGAATTCGTCGACTGGATCCGGTACCGAGGAGATCTGCC  
GCC**CGATCGCC**

ATGGAGAACGTTGATAATTCTCTGGATGGCAGTGATGTGTGAGAACCAGCAAACCAGAAGCCGGACTTG  
AAGTGGCTCAGTCGATCCTGAGTAAGTTCTCTATGAAATCCCTATTTGGGTTTACGAGTAAATTAGAATC  
TGTGAATCCAGAAGAGGAAGATGCTGTGCTGAAAGCATTCCATAGTTTAGACGTGAATCCCACATCTCAG  
CAGGATGATTCCAGCAATGGCTTGGATCCACAGGAAGCAGGGTCTCGGGTTTACCTGACCTCGAAATG  
ATGAGAAAATTGCAAGCGTGGAGACAGAATCAGAGGGAAGTCAGAGAAAAGAAGCAGGGACATCTCTCT  
TGCTCAAGAGCTGCTTCCACTGTCTACTTTGAAAGGGACAAAAGACGATGTCATTTGTGTTCTGGGACC  
CTGGTGCACACCACAGTGATTCTGACTCTGATGATGGTGGCCAGGAGCCAGAGGAGGGAAGCAGACCA  
ATGGCCAAAAGTCCCCTAGTGGTGTATCTGAGCCATCTCAGGAGTCCAAAGAAAACCAGGAGGTTT  
CAGGGAAAATACTGTCACTGGGAAATGAATGGTGCAGAGCTCTGTGCAGAAGATCCTCAAAGGATTCCA  
CCTGAGATGAGCAGCAAAGCTGGAAGCTGGCAACGGTGGTCTTCCAGACAGAGCGTCGCCCCAGCCAGGACC  
AGGTGGGAGAAGAAGGGTCCCAAGACCTACCTGCAGTAACAAACCAGAATTCGAGTGTGGTATCACTGA  
GAGTGCCTCTTCTAAAAAAGAAGTCTCTGGAGAGAAGTCAATCCAACCTCCAGCTTTTTTCAGTGGGCTT  
CGTGTGCTGAAGAAGGGGCTACCGCTGAGGGAGGAGAGACCATCACGAAATTAACCAAGGATGGGG  
ACTTAGCTTTGCTCAAATTTGACGCAGCCTGTGCAGAAGTCTTAGTGCAGGCAGGGCTGCAGACAGTGAA  
GAGTGAGAAGAAAGCAACTGATCCGAAGGCCACTCCCCTCTCCTGGAGCAGCTCTCTCTGCTCAAC  
ATTGACATGCCAAAAGTGAACCGAAGGGAGCAGACCCTGAGTCGCCAGGAGAGAAGAGATGGGCTGCA  
ATGCTGACCAAGAGAGCCAGAGCGGCCCTGGAGTACCACAAACCCAGGGTGGTGAAGTCAAGCCAAAGTC  
GCCAGAGACAGCCCTGGAGGCTTTAAAGCCCTATTATCCGGCCCCCAGAAAGGGACCACAGCTGAC  
ACCTCTGAGCTGGAAGCTCTCAAGCGCAAGATGAGACATGAGAAGGAGTCGCTAAGAGCTGTGTTTGAAC  
GGTCCAATTCTAAGCCAGCGGATGGCCCTCTGATTCCAAAAGTCTGACCACAGCCTGACTGAGCAGGA  
TGACAGGACTCCTGGCAGACTTCAAGCTGTCTGGCCACCCCAAAGACAAAAGACACAGAAGAAAAGT



[View online »](#)

GGACTGAAGTACTACTGAAGCAGAATACCAAGCTGCTATTTTACACTTGAAGAGGGAGCACAAAGAAGAAA  
TTGAAAACCTGCAGGCACAGTTTGAACCTTCGGGCATTTTCATATCCGGGGCGAGCATGCAATGATAACAGC  
GAGACTAGAAGAAACCATTGAAAATCTGAAACACGAGCTAGAACACAGATGGCGAGGGGGTTGTGAAGAG  
AGGAAAGATGTGTGCATTTCCACCGATGATGACTGCCCTCCAAGACCTTCAGAAATGTGTGCGTCCAGA  
CAGACAGAGAGACCTTCCCTCAAGCCCTGTGAAAGTGAAAGCAAGACAACCAGAAGTAATCAATTAGTACC  
CAAAAAGCTGAATATCTCCTCTTTAAGCCAGCTCTCACCCCAATGACCACAAAGACATCCATGCAGCA  
CTCCAGCCAATGGAGGGCATGGCATCAAATCAGCAGAAGGCATTGCCTCCGCCTCCGCATCCATCCCTC  
CCCTCCGCCCTCCCTCAGGACTTGGATCTTTGTCTCCGCACCTCCAATGCCACCTGTGAGTGTCTGG  
GCCACCGTACCACCTCCGCCTCTCCACCGCCACCTCTACCTCCACCTTCAAGTGTGGACCTCCACCA  
CCCCACCCACCCCACTTCCCTAACTCCCTGCCACCCAACCCTGGAGGGCTCTCTGCTCCAC  
CACCCCAAGGACTTGCACCCCACTCCCTGGACTTCTTTGGACTTGGCTTCTTCCAGTCAATG  
TCCTCGAAAACAGCCATCGAGCCAGTTGTCCCATGAAGCCTTATATTGGACTAGGATACAAATAAGT  
GATAGGAGCCAAAATGCTACACCAACCTTATGGGACTCCTTAGAAGAACCTGACATTCGGGACCCCACTG  
AATTTGAGTATTTATTCTCAAAGACACAACCTCAACAGAAGAAAAACCTCTGTGAGAGACTTATGAGAA  
GAAAAACAAGGTCAAAAAGATCATCAAATGTTGGATGGAAAACGATCTCAAAGTGGGAACTTGTGATA  
TCTAGTTTACATTTAGAATGAAGGATATCCAACAGGCCATTTTCAATGTGGATGACTCCGTGGTTGATC  
TGGAGACCTGGCAGCCTTATATGAAAACAGAGCCCAAGAGGATGAGCTGGTTAAAAATAAGAAAGTATTA  
CGAGACATCCAAAGAAGAAGAACTGAAGCTGCTGGATAAACCTGAGCAATTTTTACATGAGTTAGCCAG  
ATTCCTAATTTTGTGAACGTGCCAGTGCATAATCTTCAGATCTGTCTTTCTGAGGGTATCACCTCCT  
TGCACAGAAAGGTAGAGATCATCACGCGAGCTTCAAGGACTTGTGCACGTGAAGAGCGTGAAGGATAT  
TTAGCTCTCATCTTGGCTTTTGGAAATATATGAATGGAGGAAATAGGACTCGGGGACAAGCCGATGGA  
TATAGCTTAGAAATCTGCCAACTCAAGGATGTCAAAGTCCGGGATAATGGGATTAATCTGGTGGACT  
ACGTTGTTAAGTATTACCTGCTTACTATGATCAGGAAGCTGGAACAGAAAAGAGTGTTCCTCCCTGCC  
GGAACCACAGGATTTCTTTCTGGCTCCCAAGTCAAGTTTGAAGACCTCATAAAAAGATTTGAGAAAAGT  
AAGAGGCAACTAGAAGCAAGTGAGAAAACAGATGGTGGTGGTGTGCAAGGAGTCCCAAGGAGTATCTCC  
AGCCTTTCAAGGACAACTAGAGGAGTTCTTCCAAAAAGCCAAAAAGAGCATAAGATGGAAGAAAGTCA  
CTTGGAGAATGCACAGAAAAGTTTTGAAACAACAGTACGATATTTTGGGATGAAGCCAAAGTCTGGTGA  
AAGGAGATCACACCCAGCTACGTGTTTATGGTGTGGTATGAGTTCTGCAGTGACTTCAAGACAATTTGGA  
AACGGGAGAGTAAAAACATATCTAAAGAAAGATTGAAAATGGCTCAGGAATCAGTCAGCAAGTTGACTTC  
AGAGAAGAAAGTGGAGACAAAAGAAAATCAATCCCCTGCTAGCCTGAAAGAAAGACTGCGTCAGAAGGAA  
GCCAGTGTGACCACTAAC

ACGCGTACGCGGCGCTCGAGCAGAACTCATCTCAGAAGAGGATCTGGCAGCAAATGATATCCTGGATT  
ACAAGGATGACGACGATAAGGTTTAA

**Protein Sequence:** >RC216074 representing NM\_001103184  
Red=Cloning site Green=Tags(s)

```

MENVDNSLDGSDVSEPAKPEAGLEVAQSILSKFSMKSLFGFTSKLESVNPEEEDAVLKAFHSLDVNPTSQ
QDDSSNGLDPQEAGSRVSPDLGNDEKIASVETESEGSQRKEAGTSLLAQELLPLSTLKGTKDDVICVRGT
LVHTTSDSDSDGGQPEEESSTNGPKSPSGVLSEPSQESKENPGGFRENTVTGEMNGAELCAEDPQRIP
PEMSSKLEAGNGGLQTERRPSQDQVGEESQDLPAVTNQNSSVGI TESASSKKEVSGEKSFLPAFFSGL
RVLKKGATAEGGETITEIKPKDGLALLKLTQPQKSLVQAGLQTVKSEKKATDPKATPTLLEQLSLLLN
IDMPKTEPKGADPE SPRREEMGCNADQESQSGPGVPQTQGGEVKPKSPETALEAFKALFIRPPRKGTAD
TSELEALKRMRHEKESLRVAFERSNSKPADGPSDSKSPDHSLTEQDDRTPGRLQAVWPPKTKDTEEKV
GLKYTEAEYQAAILHLKREHKEEIENLQAQFELRAFHIRGEHAMITARLEETIENLKHELEHRWRGGCEE
RKDVCISTDDDCPPKTFRNVCVQTDRETFLKPCSESEKTRSNQLVPKLNISLSQLSPNDHKDIHAA
LQPMEGMASNQKALPPPPASIPPPPLPSGLGSLPAPPMPVVSAGPPLPPPPPPPPPLPPSSAGPPP
PPPPPPPLPNSPAPPNPGPPPAPPPGLAPPPPLFFGLGSSSSQCPKPAIEPSCPMPLYWTRIQIS
DRSQNATPTLWDSLEEDIRDPSEFEYLFKSDTTQQKKKPLSEYKKNKVKKI IKLLDGKRSQTVGILI
SSLHLEMKDIQQAIFNVDDSVVDLETLAALYENRAQEDELVKIRKYYETSKEEELKLLDKPEQFLHELAQ
IPNFAERAQCIIFRSVFSEGITSLHRKVEIITRASKDLLHVKSVDKILALILAFGNMNGNRRTRGOADG
YSLEILPKLKDVKSRDNGINLVYVVKYLRYYDQAEAGTEKSVFPLPEPQDFFLASQVKFEDLIKDLRKL
KRQLEASEKQMVVCKESPKKEYLQPFKDKLEEFFQKAKKEHKMEESHLENAQKSFETT VRYFGMKPKSGE
KEITPSYVMVWYEFCSDFKIWKRESKNI SKERLKMAQESVSKLTSEKKVETKINPTASLKERLRQKE
ASVTTN
    
```

TRTRPLEQKLISEEDLAANDILDYKDDDDKV

**Chromatograms:** [https://cdn.origene.com/chromatograms/mk8028\\_c01.zip](https://cdn.origene.com/chromatograms/mk8028_c01.zip)

**Restriction Sites:** SgfI-MluI

**Cloning Scheme:**

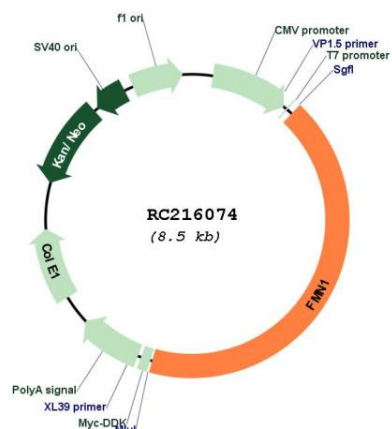


**ACCN:** NM\_001103184

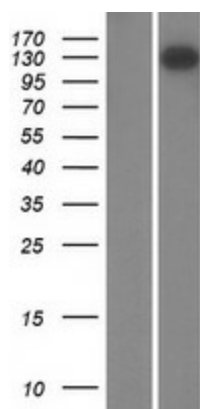
**ORF Size:** 3588 bp

<b>OTI Disclaimer:</b>	<p>Due to the inherent nature of this plasmid, standard methods to replicate additional amounts of DNA in E. coli are highly likely to result in mutations and/or rearrangements. Therefore, OriGene does not guarantee the capability to replicate this plasmid DNA. Additional amounts of DNA can be purchased from OriGene with batch-specific, full-sequence verification at a reduced cost. Please contact our customer care team at <a href="mailto:custsupport@origene.com">custsupport@origene.com</a> or by calling 301.340.3188 option 3 for pricing and delivery.</p> <p>The molecular sequence of this clone aligns with the gene accession number as a point of reference only. However, individual transcript sequences of the same gene can differ through naturally occurring variations (e.g. polymorphisms), each with its own valid existence. This clone is substantially in agreement with the reference, but a complete review of all prevailing variants is recommended prior to use. <a href="#">More info</a></p>
<b>OTI Annotation:</b>	This clone was engineered to express the complete ORF with an expression tag. Expression varies depending on the nature of the gene.
<b>Components:</b>	The ORF clone is ion-exchange column purified and shipped in a 2D barcoded Matrix tube containing 10ug of transfection-ready, dried plasmid DNA (reconstitute with 100 ul of water).
<b>Reconstitution Method:</b>	<ol style="list-style-type: none"> <li>1. Centrifuge at 5,000xg for 5min.</li> <li>2. Carefully open the tube and add 100ul of sterile water to dissolve the DNA.</li> <li>3. Close the tube and incubate for 10 minutes at room temperature.</li> <li>4. Briefly vortex the tube and then do a quick spin (less than 5000xg) to concentrate the liquid at the bottom.</li> <li>5. Store the suspended plasmid at -20°C. The DNA is stable for at least one year from date of shipping when stored at -20°C.</li> </ol>
<b>RefSeq:</b>	<a href="#">NM_001103184.4</a>
<b>RefSeq Size:</b>	3757 bp
<b>RefSeq ORF:</b>	3591 bp
<b>Locus ID:</b>	342184
<b>UniProt ID:</b>	<a href="#">Q68DA7</a>
<b>Cytogenetics:</b>	15q13.3
<b>MW:</b>	132 kDa
<b>Gene Summary:</b>	This gene belongs to the formin homology family and encodes a protein that has a role in the formation of adherens junction and the polymerization of linear actin cables. The homologous gene in mouse is associated with limb deformity. Alternatively spliced transcript variants have been found for this gene. [provided by RefSeq, Sep 2015]

Product images:



Circular map for RC216074



Western blot validation of overexpression lysate (Cat# [LY420203]) using anti-DDK antibody (Cat# [TA50011-100]). Left: Cell lysates from untransfected HEK293T cells; Right: Cell lysates from HEK293T cells transfected with RC216074 using transfection reagent MegaTran 2.0 (Cat# [TT210002]).