

## Product datasheet for **RC216069**

### **UBXN7 (NM\_015562) Human Tagged ORF Clone**

#### **Product data:**

Product Type:	Expression Plasmids
Product Name:	UBXN7 (NM_015562) Human Tagged ORF Clone
Tag:	Myc-DDK
Symbol:	UBXN7
Synonyms:	UBXD7
Mammalian Cell Selection:	Neomycin
Vector:	pCMV6-Entry (PS100001)
E. coli Selection:	Kanamycin (25 ug/mL)



[View online »](#)

**ORF Nucleotide Sequence:**

>RC216069 representing NM\_015562  
 Red=Cloning site Blue=ORF Green=Tags(s)

TTTTGTAATACGACTCACTATAGGGCGGCCGGAATTCGTCGACTGGATCCGGTACCGAGGAGATCTGCC  
 GCC**GCGATCGCC**

ATGGCTGCCACGGGGCTCCGCGCGTCTCGCGCTGAAGGGTTAATCAACAGTTCACCACCATTA  
 CCGGTGCAAGTGAAGTGTAGGAAAACATATGCTTGAAGCGTCAACAATAATCTGGAAATGGCAGTCAC  
 TATGTTTTGGATGGTGGAGGAATCGCTGAAGAGCCAGTACCAGTTCAGCAAGTGTCTCTACTGTCAGA  
 CCACACACAGAAGAAGTTCGTGCCCAATTCCTCAAAGCAGGAAATACTGGTGAACCAGAACCAT  
 TATTTGGTCTCTAAAAGACGACGGCTGCACGTTCAATTTTTGATGGTTCCGGGATTTTCAGACTGA  
 AACTATTCGCAAGAACAAGAATTAAGAAATGGAGGAGCTATCGATAAGAAATTAACACCTTGCAGAT  
 CTATTCGGCCACCCATTGATTTGATGCATAAAGGCAGCTTTGAAACAGCCAAAGAGTGTGGCCAGATGC  
 AAAATAAGTGGCTGATGATAACATTCAAATGTTCAAGACTTTCATGTCAGTGCCTCAACCGCATGT  
 GTGGAGCAACGAAGCTGTGAAGAATATTATCCGGGAACATTTCAATTTCTGGCAGTTTTATCATGACAGT  
 GAGGAAGTCCAGAGATACATACAGTTTTATAAGTTAGGGGATTTCCCTATGTTTCCATATTGGACCCAC  
 GGACAGGTCAGAAGCTAGTAGAATGGCACCAGTTAGATGTATCTTCTTTCTTGACCAAGTGACGGGATT  
 TCTGGGTGAACATGGACAACGGATGGACTTTCTAGCAGTCCCCCAAAAAATGTGCCGTTTCAGAGAGC  
 CTTATAGATGCAAGTGAAGACAGCCAGCTAGAAGCTGCCATCAGAGCCTCCTTACAAGAAACACATTTTG  
 ATTCAACACAGACAAAACAGGATAGCCGCTCAGATGAAGAATCTGAATCTGAACTTTTTCTGGCAGTGA  
 GGAGTTCATATCCGTTTGTGGCTCTGATGAAGAAGAAGAGGTAGAGAATCTTGCCAAGTCCAGAAAGTCT  
 CCCACAAAGATTTGGGGCATAGAAAAGAGGAGAATAGAAGGCCGCTGACTGAGCCACCAGTCAAGACTG  
 ATCTTGGAACAGCCACAAACCACCAAGGATTGCCAGCTGTGGATTCAGAGATACTGGAGATGCCACCTGA  
 AAAAGCAGATGGAGTAGTGGAGGGGATAGATGTAATGGACCAAAAGCACAGCTGATGTTGCGGTATCCA  
 GATGGA AAAAGGGAACAGATCACTCTTCCAGAGCAAGCTAAACTGCTAGCTTTGGTGAAGCACGTGCAGT  
 CTAAGGATACCCAAATGAACGTTTTGAACTTCTACCAACTTTCTCGAAGGAAATATCTCATCTGGA  
 CTATGATATTACATTGCAAGAGGCGGCCCTTTGCTCTCAAGAGACTGTCTTTGTACAGGAAAGAAAT

**ACGCGT**ACGCGGCCGCTCGAGCAGAAACTCATCTCAGAAGAGGATCTGGCAGCAATGATATCTGGATT  
 ACAAGGATGACGACGATAAGGTTTAA

**Protein Sequence:**

>RC216069 representing NM\_015562  
 Red=Cloning site Green=Tags(s)

MAAHGSSAASSALKGLIQFTTITGASESVGKHMLEACNNLEMAVTFMFLDGGGIAEEPSTSSASVSTVR  
 PHTEEEVRAPIPQKQEILVEPEPLFGAPKRRRPARSIFDGFDFQTETIRQEQLRNGGAIKKTTLAD  
 LFRPPIDLMHKGSFETAKECGMQNKWLMINIQNVQDFACQCLNRDVSWSNEAVKNIIREHFIFWQVYHDS  
 EEGQRYIQFYKLGDFPYVSILDPRTGKLVQVHQLDVSSFLDQVTGFLGEHQLDLSSPPKCCARSES  
 LIDASEDSQLEAAIRASLQETHFDSTQTKQDSRSESESELFSGSEEFISVCGSDEEEVENLAKSRKS  
 PHKDLGHRKEENRRPLTEPPVRTDPGTATNHQGLPAVDSEILEMPPEKADGVVEGIDVNGPKAQLMLRYP  
 DGKREQITLPEQAKLLALVKHVQSKGYPNERFELLTNFPRRKLSHLDYDITLQEAGLCPQETVVFQERN

**TR**TRPLEQKLISEEDLAANDILDYKDDDDKV

**Chromatograms:**

[https://cdn.origene.com/chromatograms/mk8028\\_c03.zip](https://cdn.origene.com/chromatograms/mk8028_c03.zip)

**Restriction Sites:**

Sgfl-MluI

**Cloning Scheme:**

Cloning sites used for ORF Shutting:



\* The last codon before the Stop codon of the ORF

**ACCN:** NM\_015562

**ORF Size:** 1467 bp

**OTI Disclaimer:** The molecular sequence of this clone aligns with the gene accession number as a point of reference only. However, individual transcript sequences of the same gene can differ through naturally occurring variations (e.g. polymorphisms), each with its own valid existence. This clone is substantially in agreement with the reference, but a complete review of all prevailing variants is recommended prior to use. [More info](#)

**OTI Annotation:** This clone was engineered to express the complete ORF with an expression tag. Expression varies depending on the nature of the gene.

**Components:** The ORF clone is ion-exchange column purified and shipped in a 2D barcoded Matrix tube containing 10ug of transfection-ready, dried plasmid DNA (reconstitute with 100 ul of water).

**Reconstitution Method:**

1. Centrifuge at 5,000xg for 5min.
2. Carefully open the tube and add 100ul of sterile water to dissolve the DNA.
3. Close the tube and incubate for 10 minutes at room temperature.
4. Briefly vortex the tube and then do a quick spin (less than 5000xg) to concentrate the liquid at the bottom.
5. Store the suspended plasmid at -20°C. The DNA is stable for at least one year from date of shipping when stored at -20°C.

**RefSeq:** [NM\\_015562.2](#)
**RefSeq Size:** 4740 bp

**RefSeq ORF:** 1470 bp

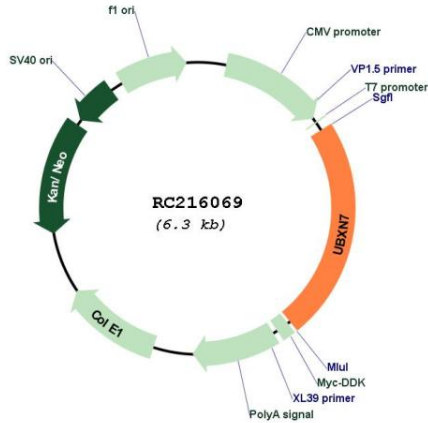
**Locus ID:** 26043

**UniProt ID:** [O94888](#)
**Cytogenetics:** 3q29

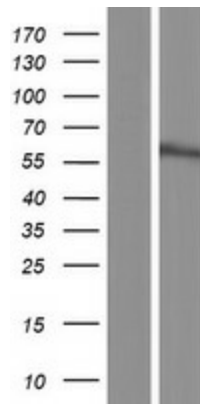
**MW:** 54.7 kDa

**Gene Summary:** Ubiquitin-binding adapter that links a subset of NEDD8-associated cullin ring ligases (CRLs) to the segregase VCP/p97, to regulate turnover of their ubiquitination substrates. [UniProtKB/Swiss-Prot Function]

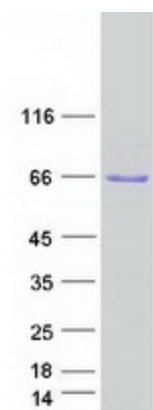
**Product images:**



Circular map for RC216069



Western blot validation of overexpression lysate (Cat# [LY414475]) using anti-DDK antibody (Cat# [TA50011-100]). Left: Cell lysates from untransfected HEK293T cells; Right: Cell lysates from HEK293T cells transfected with RC216069 using transfection reagent MegaTran 2.0 (Cat# [TT210002]).



Coomassie blue staining of purified UBXN7 protein (Cat# [TP316069]). The protein was produced from HEK293T cells transfected with UBXN7 cDNA clone (Cat# RC216069) using MegaTran 2.0 (Cat# [TT210002]).