

Product datasheet for **RC216068**

ASB4 (NM_016116) Human Tagged ORF Clone

Product data:

Product Type:	Expression Plasmids
Product Name:	ASB4 (NM_016116) Human Tagged ORF Clone
Tag:	Myc-DDK
Symbol:	ASB4
Synonyms:	ASB-4
Mammalian Cell Selection:	Neomycin
Vector:	pCMV6-Entry (PS100001)
E. coli Selection:	Kanamycin (25 ug/mL)



[View online »](#)

ORF Nucleotide Sequence:

>RC216068 ORF sequence
 Red=Cloning site Blue=ORF Green=Tags(s)

TTTTGTAATACGACTCACTATAGGGCGGCCGGAATTCGTGACTGGATCCGGTACCGAGGAGATCTGCC
 GCC**CGCATCGCC**

ATGGACGGCACCCTGCCCTGTACTAACTGGAGCTGCCAAGTTAGTTAAGAGAAATTCCTTGAGG
 CGCTAAAGTCCAATGACTTCGGAATAATGAAGGCTATTTTATCCAAAGGCAAATAGATGTGGACTGT
 TTTTGAAGTGAAGATGAGAATATGGTTTTGGCATCTTATAAACAAAGTTACTGGTTGCCTAGCTATAAA
 TTGAAGTCTTCTGGGCCACAGGCCTCCATCTCTCTGTCTTGTGGCCATGTGGAATGTCTTCTGGTGC
 TACTGGACCACAATGCTACAATCAACTGTAGACCAATGGGAAAACCCCTCTCACGTGGCTTGTGAAAT
 GGCCAATGTGGATTGTGTTAAGATCCTCTGTGATCGTGGGGCAAAGCTCAATTGCTACTCCTAAGTGA
 CACACAGCTTTGCACTTTTGTACAACCTCAAGTCCATTCTCTGTGCCAAGCAATGGTTTGGAGAGGGG
 CGAATGTGAACATGAAGACCAACAACCAAGATGAGGAGACGCCCTGCACACGGCTGCCACTTCGGCT
 TTCGGAGCTGGTGGCCTTCTACGTGGAACACGGGGCCATAGTGGACAGCGTGAATGCCACATGGAGACC
 CCCTGGCCATCGCCGCTACTGGGCCCTCCGCTTAAAGGAGCAGGAGTACAGCAGGAGACCACCTGG
 TCTGCCGATGCTGCTTACTACAAAGCCGAAGTCAATGCCCGAGATGACGACTTAAATCTCCCTCCA
 CAAGGCAGCCTGGAAGTGTGACCACGTGCTCATGCACATGATGCTGGAAGCTGGCGCCGAAGCCAATCTC
 ATGGATATCAACGGCTGTGCTGCCATCCAGTACGTGCTGAAGGTCACCTCCGTGCGCCCTGCTGCCACG
 CTGAGATCTGCTACCAGCTCCTGTTGAACCATGGGGCTGCCCGAATATACCCTCCACAGTCCATAAGGT
 GATACAGGCTGCCATTTGTCTTAAAGCAATGAAGTTGTAGTCAATGCCTATGAACACATCAGATGG
 AACACAAAGTGGAGAAGAGCTATCCCGATGATGACTTGGAGAAATACTGGGATTTTACCCTCTCTCT
 TTAAGTGTGCTGTAACCTCCAAGGACTCTCATGCACCTATCGAGATGTGCCATTAGAAGAACATTACA
 CAACAGATGCCATAGAGCAATTCCTTTGCTTTCCCTCCATTGTCAATTGAAAAAGTACTTGCTTTTAGAG
 CCAGAGGGAATTATTTAT

ACGCGTACGCGGCCGCTCGAGCAGAACTCATCTCAGAAGAGGATCTGGCAGCAAATGATATCCTGGATT
 ACAAGGATGACGACGATAAGGTTTAA

Protein Sequence:

>RC216068 protein sequence
 Red=Cloning site Green=Tags(s)

MDGTTAPVTKSGAAKLVKRNFLEALKSNDFGKLKAILIQRQIDVDTVFEVEDENMVLASYKQGYWLPSYK
 LKSSWATGLHLSVLFHVECLLVLLDHNATINCRPNGKTPLHVACEMANVDCVKILCDRGAKLNCYLSG
 HTALHFCTTPSSILCAKQLVWRGANVNMKTNNQDEETPLHTAAHFGLSELVAFYVEHGAIVDSVNAHMET
 PLAIAAYWALRFKEQEYSTEHLVCRMLLDYKAEVNRDDDFKSPLHKAAWNCDHVMHMMLEAGAEANL
 MDINGCAAIQYVLKVTSVRPAAQPEICYQLLLNHGAARIYPPQFHKVIQACHSCPKAIEVVVNAYEHIRW
 NTKWRAIPDDDLKEYWDFYHSLFTVCCNSPRTLMLHSRCAIRRTLHNRCHRAIPLLSLPLSLKKYLLLE
 PEGIIY

TRTRPLEQKLISEEDLAANDILDYKDDDDKV

Chromatograms:

https://cdn.origene.com/chromatograms/mk6473_g05.zip

Restriction Sites:

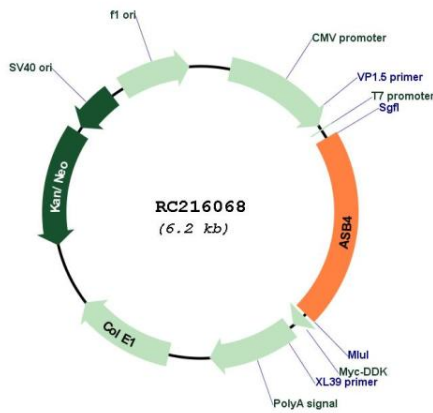
SgfI-MluI

Protein Families: Druggable Genome

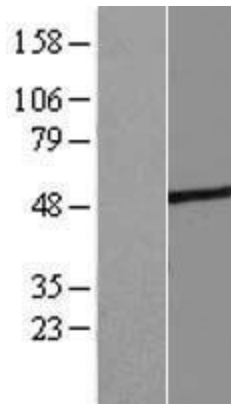
MW: 48.2 kDa

Gene Summary: The protein encoded by this gene is a member of the ankyrin repeat and SOCS box-containing (ASB) family of proteins. They contain ankyrin repeat sequence and SOCS box domain. The SOCS box serves to couple suppressor of cytokine signalling (SOCS) proteins and their binding partners with the elongin B and C complex, possibly targeting them for degradation. Multiple alternatively spliced transcript variants have been described for this gene but some of the full length sequences are not known. [provided by RefSeq, Jul 2008]

Product images:



Circular map for RC216068



Western blot validation of overexpression lysate (Cat# [LY414175]) using anti-DDK antibody (Cat# [TA50011-100]). Left: Cell lysates from untransfected HEK293T cells; Right: Cell lysates from HEK293T cells transfected with RC216068 using transfection reagent MegaTran 2.0 (Cat# [TT210002]).