

Product datasheet for RC216067

RQCD1 (CNOT9) (NM_005444) Human Tagged ORF Clone

Product data:

Product Type:	Expression Plasmids
Product Name:	RQCD1 (CNOT9) (NM_005444) Human Tagged ORF Clone
Tag:	Myc-DDK
Symbol:	RQCD1
Synonyms:	CAF40; CT129; RCD-1; RCD1; RQCD1
Mammalian Cell Selection:	Neomycin
Vector:	pCMV6-Entry (PS100001)
E. coli Selection:	Kanamycin (25 ug/mL)
ORF Nucleotide Sequence:	>RC216067 representing NM_005444 Red=Cloning site Blue=ORF Green=Tags(s)

TTTTGTAATACGACTCACTATAGGGCGGCCGGAATTCGTCGACTGGATCCGGTACCGAGGAGATCTGCC
GCC**CGATCGCC**

ATGCACAGCCTGGCGACGGCTGCGCCTGTGCCTACTACACTGGCACAAGTGGATAGAGAAAAGATCTATC
AGTGGATCAATGAGCTGTCCAGTCTGAGACTAGGAAAATGCTTTGCTGGAGCTAAGTAAGAAGCGAGA
ATCTGTTCCCTGACCTTGACCCATGCTGTGGCATTCAATTTGGTACTATTGCAGCACTTTACAGGAAATT
GTAATATTTATCCATCTATCAACCCACCCACCTTGACAGCACACCAGTCTAACAGAGTTTGCAATGCTC
TGGCATTACTGCAATGTGTAGCATCACATCCAGAAACCAGGTGAGCGTTTCTCGCAGCACACATCCCACT
TTTTTTGTACCCCTTTTGCACACTGTCAGCAAAACACGTCCTTTGAGTATCTCCGGCTACCAGCCTT
GGAGTTATTGGGGCCCTGGTGAAAACAGATGAACAAGAAGTAATCAACTTTTTATTAACAACAGAAATTA
TCCCTTTATGTTTGCGAATTATGGAATCTGGAAGTGAACCTTTCTAAAACAGTTGCCACATTCATCTCCA
GAAGATCTTGTTAGATGACACTGGTTTGGCTTATATATGTGACAGCATGAGCGTTTCTCCCATGTTGCC
ATGATCTTGGGTAAGATGGTCTGCAGCTATCAAAGAGCCTTCTGCCGTCTGCTGAAGCATGTAGTGA
GATGTTACCTTCGACTTTCAGATAACCCAGGGCAGTGAAGCACTCAGACAGTGCCTCCCTGACCAGCT
GAAAGACACAACCTTCGCCAGGTGCTAAAAGATGACACCACCAGAAACGCTGGCTTGCAACTGGTG
AAGAACCTGCAAGAGGGCCAGGTACCGATCCCCGGGGTATCCCCCTGCCCTCAG

ACGCGTACGCGGCCGCTCGAGCAGAAACTCATCTCAGAAGAGGATCTGGCAGCAAATGATATCTGGATT
ACAAGGATGACGACGATAAGGTTAA



[View online »](#)

Protein Sequence: >RC216067 representing NM_005444
 Red=Cloning site Green=Tags(s)

MHSLATAAPVPTTLAQVDREKIYQWINESSPETRENALLELSKKRESVPLAPMLWHSFGTIAALLQEI
 VNIYPSINPPTLTAHQSNRVCNALALLQCVASHPETRSAFLAAHIPLFLYPFLHTVSKTRPFEYLRLTSL
 GVIGALVKTDEQEVINFLLTTEIIPCLLRIMESGSELSKTVATF ILQKILLDDTGLAYICQTYERF SHVA
 MILGKMYLQLSKEPSARLLKHVVRCYLRLSDNPRAREALRQCLPDQLKDTTFAQVLKDDTTTKRWLAQLV
 KNLQEQQVTDPRGIPLPPQ

TRTRPLEQKLISEEDLAANDILDYKDDDDKV

Chromatograms: https://cdn.origene.com/chromatograms/ja1496_a08.zip

Restriction Sites: SgfI-MluI

Cloning Scheme:

Cloning sites used for ORF Shutting:



* The last codon before the Stop codon of the ORF

ACCN: NM_005444

ORF Size: 897 bp

OTI Disclaimer: The molecular sequence of this clone aligns with the gene accession number as a point of reference only. However, individual transcript sequences of the same gene can differ through naturally occurring variations (e.g. polymorphisms), each with its own valid existence. This clone is substantially in agreement with the reference, but a complete review of all prevailing variants is recommended prior to use. [More info](#)

OTI Annotation: This clone was engineered to express the complete ORF with an expression tag. Expression varies depending on the nature of the gene.

Components: The ORF clone is ion-exchange column purified and shipped in a 2D barcoded Matrix tube containing 10ug of transfection-ready, dried plasmid DNA (reconstitute with 100 ul of water).

Reconstitution Method:

1. Centrifuge at 5,000xg for 5min.
2. Carefully open the tube and add 100ul of sterile water to dissolve the DNA.
3. Close the tube and incubate for 10 minutes at room temperature.
4. Briefly vortex the tube and then do a quick spin (less than 5000xg) to concentrate the liquid at the bottom.
5. Store the suspended plasmid at -20°C. The DNA is stable for at least one year from date of shipping when stored at -20°C.

RefSeq: [NM_005444.3](#)

RefSeq Size: 900 bp

RefSeq ORF: 900 bp

Locus ID: 9125

UniProt ID: [Q92600](#)

Cytogenetics: 2q35

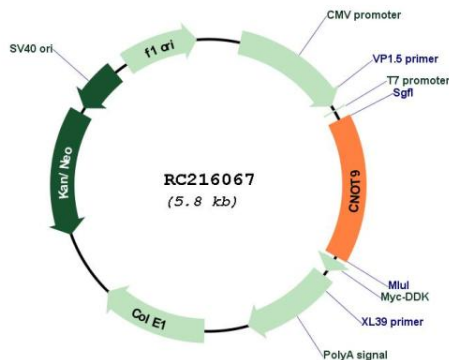
Domains: Rcd1

Protein Pathways: RNA degradation

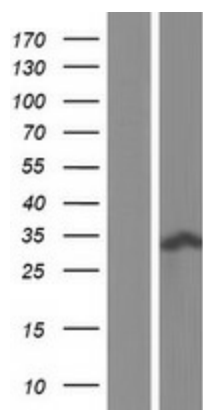
MW: 33.5 kDa

Gene Summary: This gene encodes a member of the highly conserved RCD1 protein family. The encoded protein is a transcriptional cofactor and a core protein of the CCR4-NOT complex. It may be involved in signal transduction as well as retinoic acid-regulated cell differentiation and development. Alternatively spliced transcript variants have been described for this gene. [provided by RefSeq, Oct 2012]

Product images:



Circular map for RC216067



Western blot validation of overexpression lysate (Cat# [LY401673]) using anti-DDK antibody (Cat# [TA50011-100]). Left: Cell lysates from untransfected HEK293T cells; Right: Cell lysates from HEK293T cells transfected with RC216067 using transfection reagent MegaTran 2.0 (Cat# [TT210002]).