

## Product datasheet for RC216065

### DEFB112 (NM\_001037498) Human Tagged ORF Clone

#### Product data:

**Product Type:** Expression Plasmids  
**Product Name:** DEFB112 (NM\_001037498) Human Tagged ORF Clone  
**Tag:** Myc-DDK  
**Symbol:** DEFB112  
**Synonyms:** DEFB-12  
**Mammalian Cell Selection:** Neomycin  
**Vector:** pCMV6-Entry (PS100001)  
**E. coli Selection:** Kanamycin (25 ug/mL)  
**ORF Nucleotide Sequence:** >RC216065 representing NM\_001037498  
Red=Cloning site Blue=ORF Green=Tags(s)

TTTTGTAATACGACTCACTATAGGGCGGCCGGAATTCGTCGACTGGATCCGGTACCGAGGAGATCTGCC  
GCC**CGATCGCC**

ATGAAATTATTGACAACCATATGTAGACTGAAACTTGAAAAATGTACTCAAAGACAAATACATCTTCCA  
CAATATTTGAAAAGGCCCGACATGGGACAGAGAAAATCAGCACAGCCAGAAGTGAAGGGCACCATATCAC  
CTTTAGTAGGTGGAAGTCATGTACAGCGATTGGAGGTCGATGTAAAAATCAATGTGATGATAGTGAATTT  
AGGATTCATACTGTGCAAGACCTACAACCTATTGCTGCGTGACAGAATGTGACCCTACGGACCCAATA  
ATTGGATCCCAAAGGACTCAGTAGGACTCAAGAAATGGTACCCTAAAGACTCACGTCAT

**ACGCGT**ACGCGGCCGCTCGAGCAGAAACTCATCTCAGAAGAGGATCTGGCAGCAAATGATATCCTGGATT  
ACAAGGATGACGACGATAAGGTTTAA

**Protein Sequence:** >RC216065 representing NM\_001037498  
Red=Cloning site Green=Tags(s)  
MKLLTTICRLKLEKMYSKTNTSSTIFEKARHGTEKISTARSEGHHITFSRWKSCTAIGGRCKNQDDSEF  
RISYCARPTTHCCVTECDPTDPNNWIPKDSVGTQEWYPKDSRH

**TR**TRPLEQKLISEEDLAANDILDYKDDDDKV

**Chromatograms:** [https://cdn.origene.com/chromatograms/mk8004\\_h06.zip](https://cdn.origene.com/chromatograms/mk8004_h06.zip)

**Restriction Sites:** SgfI-MluI



[View online »](#)

**Cloning Scheme:**


**ACCN:** NM\_001037498

**ORF Size:** 339 bp

**OTI Disclaimer:** The molecular sequence of this clone aligns with the gene accession number as a point of reference only. However, individual transcript sequences of the same gene can differ through naturally occurring variations (e.g. polymorphisms), each with its own valid existence. This clone is substantially in agreement with the reference, but a complete review of all prevailing variants is recommended prior to use. [More info](#)

**OTI Annotation:** This clone was engineered to express the complete ORF with an expression tag. Expression varies depending on the nature of the gene.

**Components:** The ORF clone is ion-exchange column purified and shipped in a 2D barcoded Matrix tube containing 10ug of transfection-ready, dried plasmid DNA (reconstitute with 100 ul of water).

- Reconstitution Method:**
1. Centrifuge at 5,000xg for 5min.
  2. Carefully open the tube and add 100ul of sterile water to dissolve the DNA.
  3. Close the tube and incubate for 10 minutes at room temperature.
  4. Briefly vortex the tube and then do a quick spin (less than 5000xg) to concentrate the liquid at the bottom.
  5. Store the suspended plasmid at -20°C. The DNA is stable for at least one year from date of shipping when stored at -20°C.

**RefSeq:** [NM\\_001037498.1](#), [NP\\_001032587.1](#)

**RefSeq Size:** 342 bp

**RefSeq ORF:** 342 bp

**Locus ID:** 245915

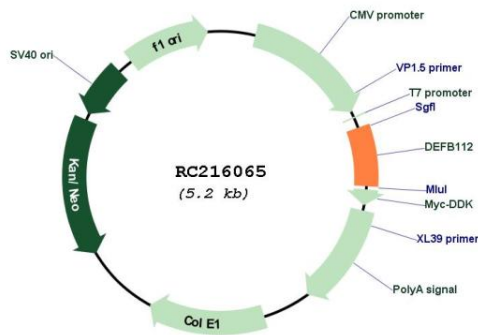
**Cytogenetics:** 6p12.3

**Protein Families:** Secreted Protein

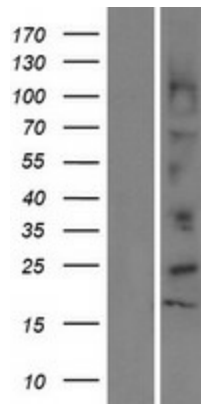
**MW:** 12.8 kDa

**Gene Summary:** Defensins form a family of antimicrobial and cytotoxic peptides made by neutrophils. Defensins are short, processed peptide molecules that are classified by structure into three groups: alpha-defensins, beta-defensins and theta-defensins. All beta-defensin genes are densely clustered in four to five syntenic chromosomal regions. [provided by RefSeq, Oct 2014]

**Product images:**



Circular map for RC216065



Western blot validation of overexpression lysate (Cat# [LY421914]) using anti-DDK antibody (Cat# [TA50011-100]). Left: Cell lysates from untransfected HEK293T cells; Right: Cell lysates from HEK293T cells transfected with RC216065 using transfection reagent MegaTran 2.0 (Cat# [TT210002]).