

Product datasheet for RC216043

MBNL3 (NM_018388) Human Tagged ORF Clone

Product data:

Product Type:	Expression Plasmids
Product Name:	MBNL3 (NM_018388) Human Tagged ORF Clone
Tag:	Myc-DDK
Symbol:	MBNL3
Synonyms:	CHCR; MBLX; MBLX39; MBXL
Mammalian Cell Selection:	Neomycin
Vector:	pCMV6-Entry (PS100001)
E. coli Selection:	Kanamycin (25 ug/mL)
ORF Nucleotide Sequence:	>RC216043 representing NM_018388 Red=Cloning site Blue=ORF Green=Tags(s)

TTTTGTAATACGACTCACTATAGGGCGCCGGGAATTCGTCGACTGGATCCGGTACCGAGGAGATCTGCC
GCC**CGATCGCC**

ATGACGGCTGTCAATGTTGCCCTGATTCGTGATACCAAGTGGCTGACTTTAGAAGTCTGTAGAGAATTTCC
AGAGAGGAACTTGCTCTCGAGCTGATGCAGATTGCAAGTTTGCCCATCCACCAAGAGTTTGCCATGTGGA
AAATGGTCGTGTGGTGGCTGTTTTGATTCTCTAAAGGGTCGGTGTACCCGAGAGAAGTCAAGTACCTT
CACCTCCTCCACTTAAAAACGCAGCTGGAGATTAATGGCGGAACAATCTGATTCAACAGAAGACTG
CCGCAGCCATGTTGCCAGCAGATGCAGCTTATGCTCCAAAACGCTCAAATGTCATCATTGGTTCTTT
TCCTATGACTCCATCAATTCCAGCTAATCCTCCCATGGCTTTCAATCCTTACATACCACATCCTGGGATG
GGCCTCGTTCCTGCAGAACTGTACAAATACACCTGTTCTGATTCTGGAAACCCACTCTTGCAATGC
CAGGAGCTGTTGGCCAAAACGATGCGTTTCAGATAAACTGGAGGTTTGCCGAGAATTTACAGCGTGGAAA
TTGTACCCGTGGGGAGAATGATTGCCGCTATGCTCACCTACTGATGCTTCCATGATTGAAGCGAGTGAT
AATACTGTGACAACTGTCATGGATTACATCAAAGTTCGATGCTCGCGGGAGAATGCAAGTACTTTTCATC
CTCCTGCACACTGCAAGCCAGACTCAAGGCAGCTCATCATCAGATGAACCATTAGCTGCCTCTGCCAT
GGCCCTGCAGCCTGGTACACTGCAACTGATACCAAAGAGATCAGCACTGGAAAAGCCCAATGGTGCCACC
CGGTCTTTAATCCACTGTTTTCCACTGCCAACAGGCTCTGACTAACCTGCAGCTCCCACAGCCGGCAT
TTATCCCTGCAGGGCAATACTGTGCATGGCACCCGCTTCAAATATTGTGCCCATGATGCACGGTGTCTAC
ACCTACCACTGTGTCTGCAGCAACAACCTGCCACCAGCGTTCCGTTCCGCTGCACCAACTACAGGCAAT
CAGCTGAAATTC

ACGCGTACGCGGCCGCTCGAGCAGAACTCATCTCAGAAGAGGATCTGGCAGCAAATGATATCCTGGATT
ACAAGGATGACGACGATAAGGTTTAA



[View online »](#)

Protein Sequence: >RC216043 representing NM_018388
Red=Cloning site Green=Tags(s)

MTAVNVALIRDTKWLTLEVCREFQRGTCSRADADCKFAHPPRVCHVENGRVVACFDSLKGRCTRENCKYL
 HPPPHLKTQLEINGRNNLIQQKTAAMFAQQMQLMLQNAQMSSLSGFPMTSIPANPPMAFNPIPHPGM
 GLVPAELVPNTPLVLPGNPPLAMPGAVGPKLMRSDKLEVCREFQRGNCTRGENDCRYAHPDASMI EASD
 NVTVICMDYIKGRCSREKCKYFHPPAHLQARLKAHHQMNHSAASAMALQPGLQLIPKRSALKEKPNGAT
 PVFNPTVFHCQQALTNLQLPQPAFIPAGPILCMAPASNI VPMMHGATPTTVSAATTPATSVPFAAPTGN
 QLK F

TRTRPLEQKLISEEDLAANDILDYKDDDDKV

Chromatograms: https://cdn.origene.com/chromatograms/mk8028_d11.zip

Restriction Sites: SgfI-MluI

Cloning Scheme:



* The last codon before the Stop codon of the ORF

ACCN: NM_018388

ORF Size: 1062 bp

OTI Disclaimer: The molecular sequence of this clone aligns with the gene accession number as a point of reference only. However, individual transcript sequences of the same gene can differ through naturally occurring variations (e.g. polymorphisms), each with its own valid existence. This clone is substantially in agreement with the reference, but a complete review of all prevailing variants is recommended prior to use. [More info](#)

OTI Annotation: This clone was engineered to express the complete ORF with an expression tag. Expression varies depending on the nature of the gene.

Components: The ORF clone is ion-exchange column purified and shipped in a 2D barcoded Matrix tube containing 10ug of transfection-ready, dried plasmid DNA (reconstitute with 100 ul of water).

Reconstitution Method:

1. Centrifuge at 5,000xg for 5min.
2. Carefully open the tube and add 100ul of sterile water to dissolve the DNA.
3. Close the tube and incubate for 10 minutes at room temperature.
4. Briefly vortex the tube and then do a quick spin (less than 5000xg) to concentrate the liquid at the bottom.
5. Store the suspended plasmid at -20°C. The DNA is stable for at least one year from date of shipping when stored at -20°C.

RefSeq: [NM_018388.3](#), [NP_060858.2](#)

RefSeq Size: 2701 bp

RefSeq ORF: 1065 bp

Locus ID: 55796

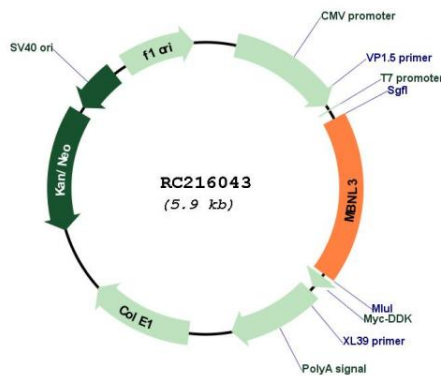
UniProt ID: [Q9NUK0](#)

Cytogenetics: Xq26.2

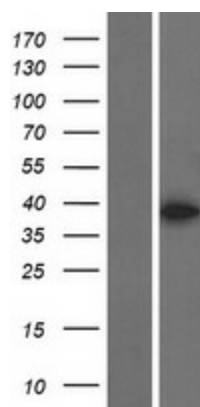
MW: 38.4 kDa

Gene Summary: This gene encodes a member of the muscleblind-like family of proteins. The encoded protein may function in regulation of alternative splicing and may play a role in the pathophysiology of myotonic dystrophy. Alternatively spliced transcript variants have been described. [provided by RefSeq, Dec 2009]

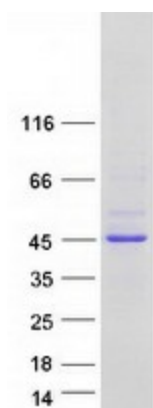
Product images:



Circular map for RC216043



Western blot validation of overexpression lysate (Cat# [LY413087]) using anti-DDK antibody (Cat# [TA50011-100]). Left: Cell lysates from untransfected HEK293T cells; Right: Cell lysates from HEK293T cells transfected with RC216043 using transfection reagent MegaTran 2.0 (Cat# [TT210002]).



Coomassie blue staining of purified MBNL3 protein (Cat# [TP316043]). The protein was produced from HEK293T cells transfected with MBNL3 cDNA clone (Cat# RC216043) using MegaTran 2.0 (Cat# [TT210002]).